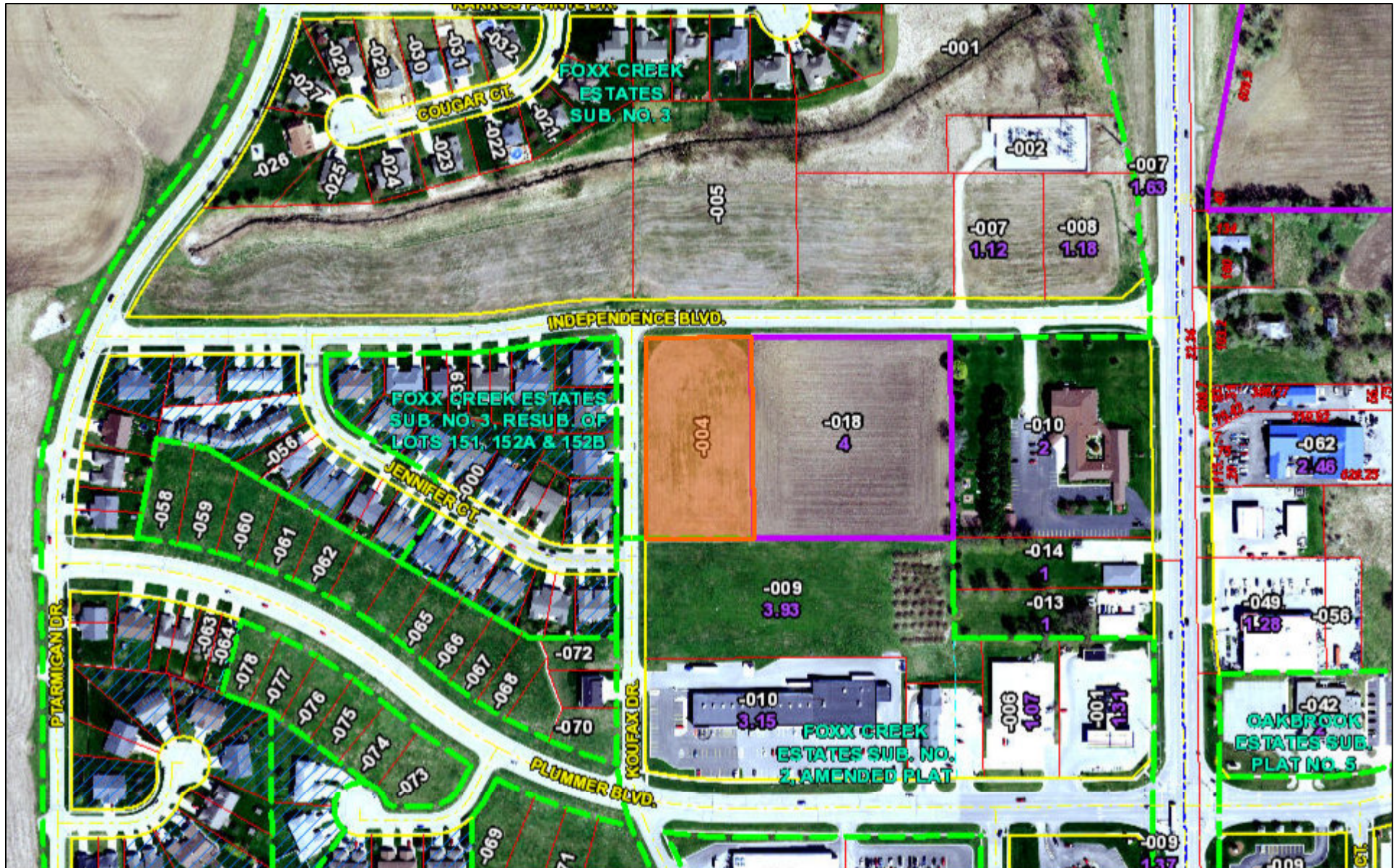


Lot - 5
Tax ID - 28010476004

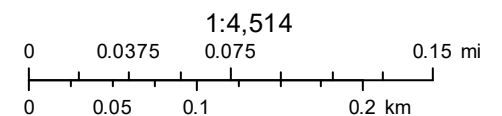


March 16, 2017

Office Of
Supervisor of Assessments

Sangamon County GIS

Although strict accuracy standards have been employed in the compilation of this map, Sangamon County does not warrant or guarantee the accuracy of the information contained herein and disclaims any and all liability resulting from any error or omission in this map.



Parcel Number: 28010476004
Copyright 2013