

FOR LEASE

Negotiable Rate



608 E. University Ave., Champaign

LATITUDE

Property Information

BUILDING SIZE

21,108 SF

AVAILABLE SF

1,259 – 3,370

LEASE PRICE

Negotiable

ZONING

CB1-Central Business

AREA

Located along East University Ave. (21,800 VPD) in Champaign between Fifth and Wright Street and just North of the University of Illinois Engineering Campus. Property is located with close proximity to Presence Hospital, Carle Hospital, and Downtown Champaign.

Property Description

Latitude is a Class A, two building, six story mixed-use development consisting of 21,100 SF of first floor retail/restaurant/office space spanning two city blocks and 324 units/519 beds luxury apartments on the 2nd-6th floors. The first floor retail/restaurant/office space ranges in size from 1,259-3,370 SF and can be demised per tenant needs. The east building currently has 2,667 SF adjacent to Lao Sze Chuan & Hammerhead Coffee as well as 3,370 SF (Divisible to 1,440 SF) on the west endcap. The West building has 2,611 SF (Divisible to approx. 1,259 SF & 1,352 SF) on the east endcap. Tenant space will be delivered in 'Grey Shell' with \$50/USF in tenant improvement allowance. All available spaces except the west endcap of the east building have common area restrooms. Additional outdoor patio area is available for retail/restaurant use and the building features high speed fiber internet.

Zach Wetherell
 217-403-3374 (Office)
 217-821-8553 (Cell)
 zw@cbcdr.com



RETAIL

AJ Thoma, III, CCIM
 217-403-3425 (Office)
 217-520-3299 (Cell)
 ajt@cbcdr.com

CBCDR.COM

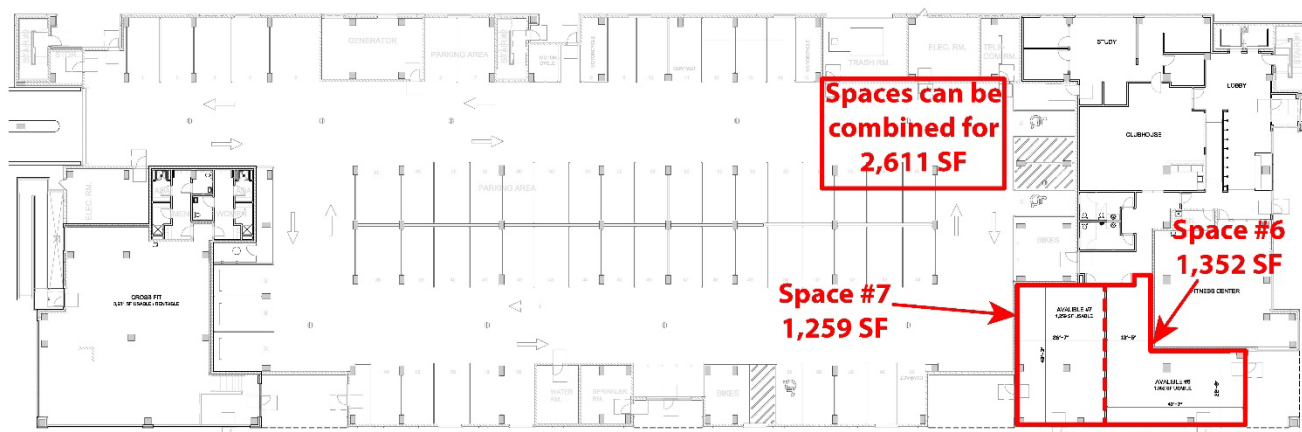
©2017 Coldwell Banker Real Estate LLC, dba Coldwell Banker Commercial Affiliates. All Rights Reserved. Coldwell Banker Real Estate LLC, dba Coldwell Banker Commercial Affiliates fully supports the principles of the Equal Opportunity Act. Each Office is Independently Owned and Operated. Coldwell Banker Commercial and the Coldwell Banker Commercial Logo are registered service marks owned by Coldwell Banker Real Estate LLC, dba Coldwell Banker Commercial Affiliates.

Coldwell Banker Commercial
Devonshire Realty
 201 W. Springfield Ave., 11th Fl.
 Champaign, Illinois 61820
 217-352-7712

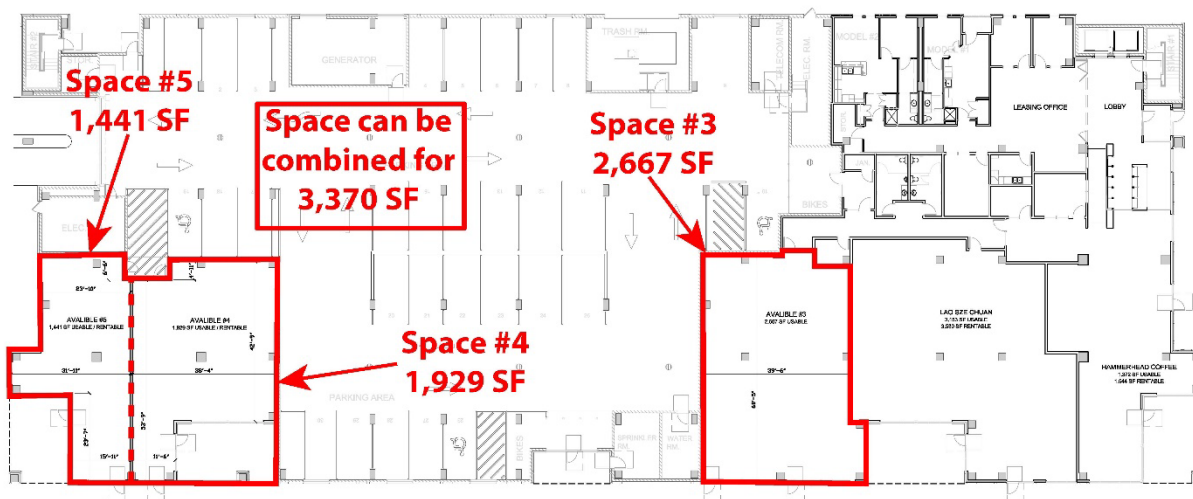
FOR LEASE

Negotiable Rate

WEST BUILDING



EAST BUILDING



Zach Wetherell
217-403-3374 (Office)
217-821-8553 (Cell)
zw@cbcdr.com



AJ Thoma, III, CCIM
217-403-3425 (Office)
217-520-3299 (Cell)
ajt@cbcdr.com

CBCDR.COM

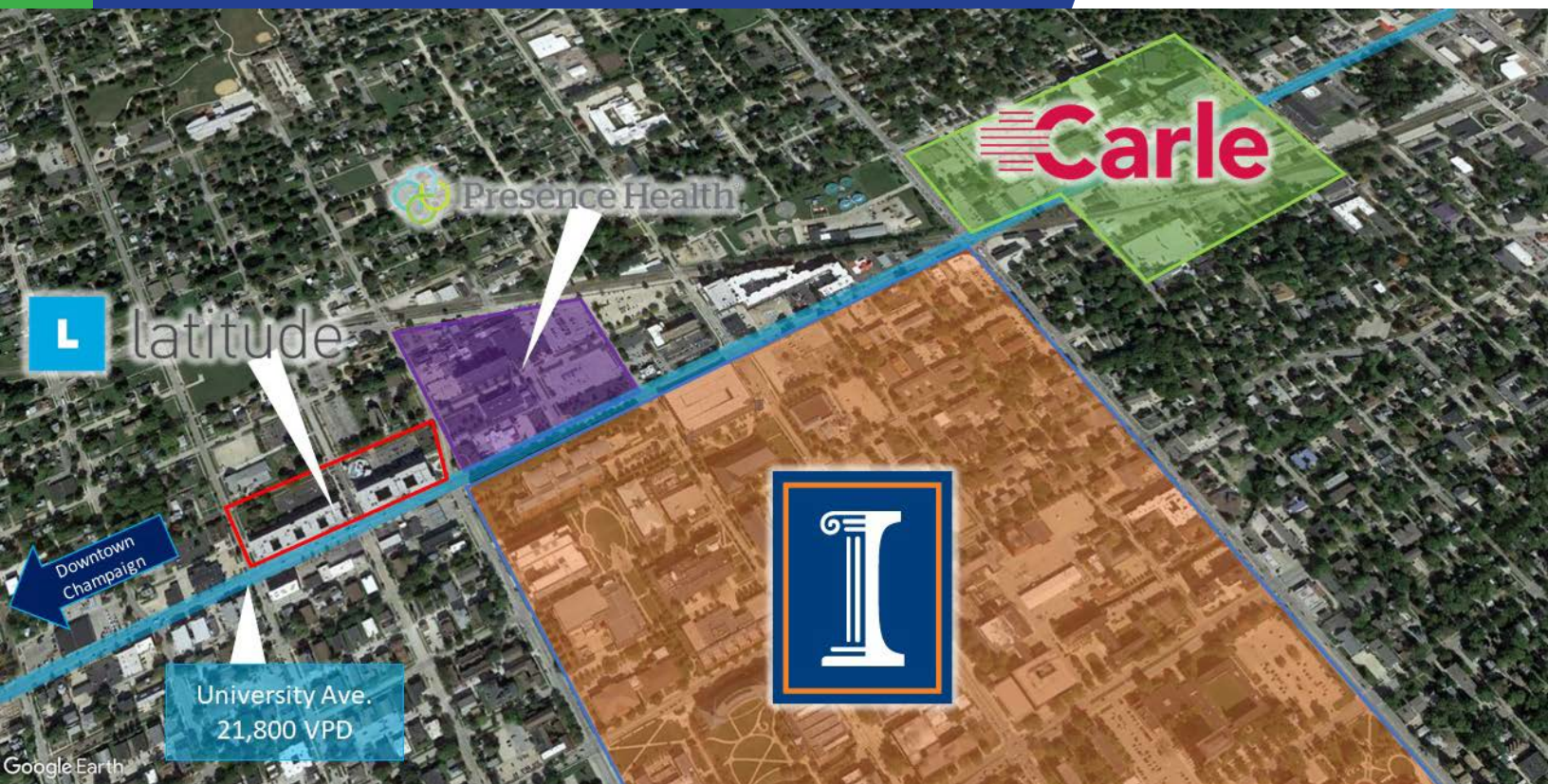
©2017 Coldwell Banker Real Estate LLC, dba Coldwell Banker Commercial Affiliates. All Rights Reserved. Coldwell Banker Real Estate LLC, dba Coldwell Banker Commercial Affiliates fully supports the principles of the Equal Opportunity Act. Each Office is Independently Owned and Operated. Coldwell Banker Commercial and the Coldwell Banker Commercial Logo are registered service marks owned by Coldwell Banker Real Estate LLC, dba Coldwell Banker Commercial Affiliates.

Coldwell Banker Commercial
Devonshire Realty
201 W. Springfield Ave., 11th Fl.
Champaign, Illinois 61820
217-352-7712

RETAIL

FOR LEASE

Negotiable Rate



Zach Wetherell
217-403-3374 (Office)
217-821-8553 (Cell)
zw@cbcdr.com



RETAIL

AJ Thoma, III, CCIM
217-403-3425 (Office)
217-520-3299 (Cell)
ajt@cbcdr.com

CBCDR.COM

©2017 Coldwell Banker Real Estate LLC, dba Coldwell Banker Commercial Affiliates. All Rights Reserved. Coldwell Banker Real Estate LLC, dba Coldwell Banker Commercial Affiliates fully supports the principles of the Equal Opportunity Act. Each Office is Independently Owned and Operated. Coldwell Banker Commercial and the Coldwell Banker Commercial Logo are registered service marks owned by Coldwell Banker Real Estate LLC, dba Coldwell Banker Commercial Affiliates.

Coldwell Banker Commercial
Devonshire Realty
201 W. Springfield Ave., 11th Fl.
Champaign, Illinois 61820
217-352-7712