



**COLDWELL
BANKER
COMMERCIAL**

DEVONSHIRE REALTY

LAND FOR SALE

\$50,000 (Reduced from \$70,000)



LAND



FOR SALE

10-20 Kemp Drive,

Chatham, IL 61822

0.68 AC

LAND

SALE PRICE

\$50,000 (Reduced
from \$70,000)

LOT SIZE

0.68 AC

ZONING

I-1

TAX PIN

28-13-0-297-007, 008

PROPERTY DESCRIPTION

Site is industrial zoned land and is easily accessible from the newly expanded Route 4 interchange. Ready for development and made up of two contiguous parcels.

AREA DESCRIPTION

Site is located on the south end of Chatham on a corner lot in a developed industrial area.



MATHIS 217-377-1944

217-377-1944

tmathis@cbcdr.com



CBCDR.COM

**COLDWELL BANKER COMMERCIAL
DEVONSHIRE REALTY**
Springfield, IL 62701
217-547-6650

© 2020 Coldwell Banker Real Estate LLC, Coldwell Banker Commercial Affiliates. All Rights Reserved. Coldwell Banker Real Estate LLC, Coldwell Banker Commercial Affiliates fully supports the principles of the Equal Opportunity Act. Each Office is Independently Owned and Operated. Coldwell Banker Commercial and the Coldwell Banker Commercial Logo are registered service marks owned by Coldwell Banker Real Estate LLC, dba Coldwell Banker Commercial Affiliates.



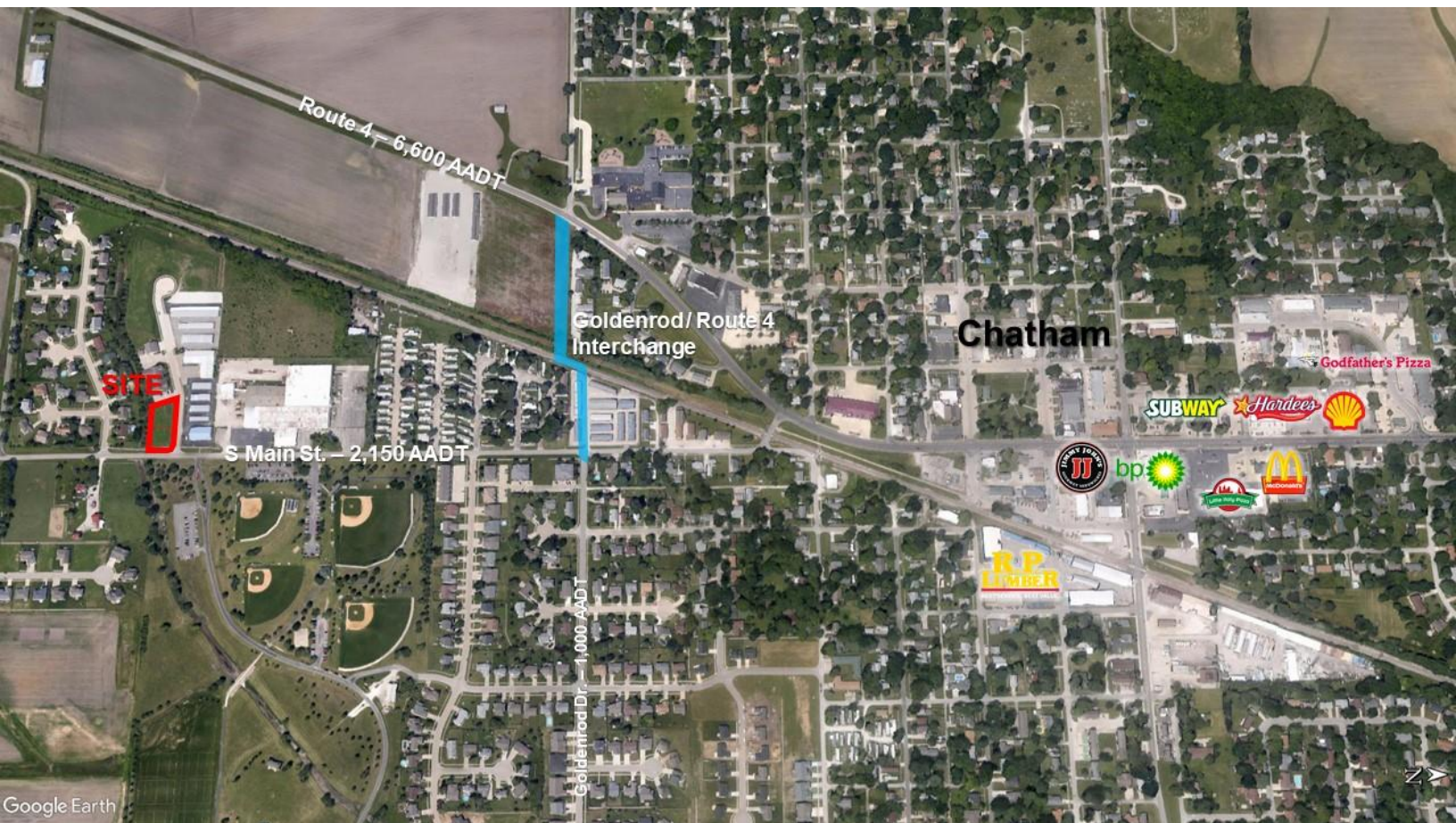
**COLDWELL
BANKER
COMMERCIAL**
DEVONSHIRE REALTY

**LAND
FOR SALE**
\$50,000



FOR SALE

AERIAL



MATHIS 217-377-1944
217-377-1944
tmathis@cbcdr.com

  
CBCDR.COM

**COLDWELL BANKER COMMERCIAL
DEVONSHIRE REALTY**
Springfield, IL 62701
217-547-6650

© 2020 Coldwell Banker Real Estate LLC, Coldwell Banker Commercial Affiliates. All Rights Reserved. Coldwell Banker Real Estate LLC, Coldwell Banker Commercial Affiliates fully supports the principles of the Equal Opportunity Act. Each Office is Independently Owned and Operated. Coldwell Banker Commercial and the Coldwell Banker Commercial Logo are registered service marks owned by Coldwell Banker Real Estate LLC, dba Coldwell Banker Commercial Affiliates.