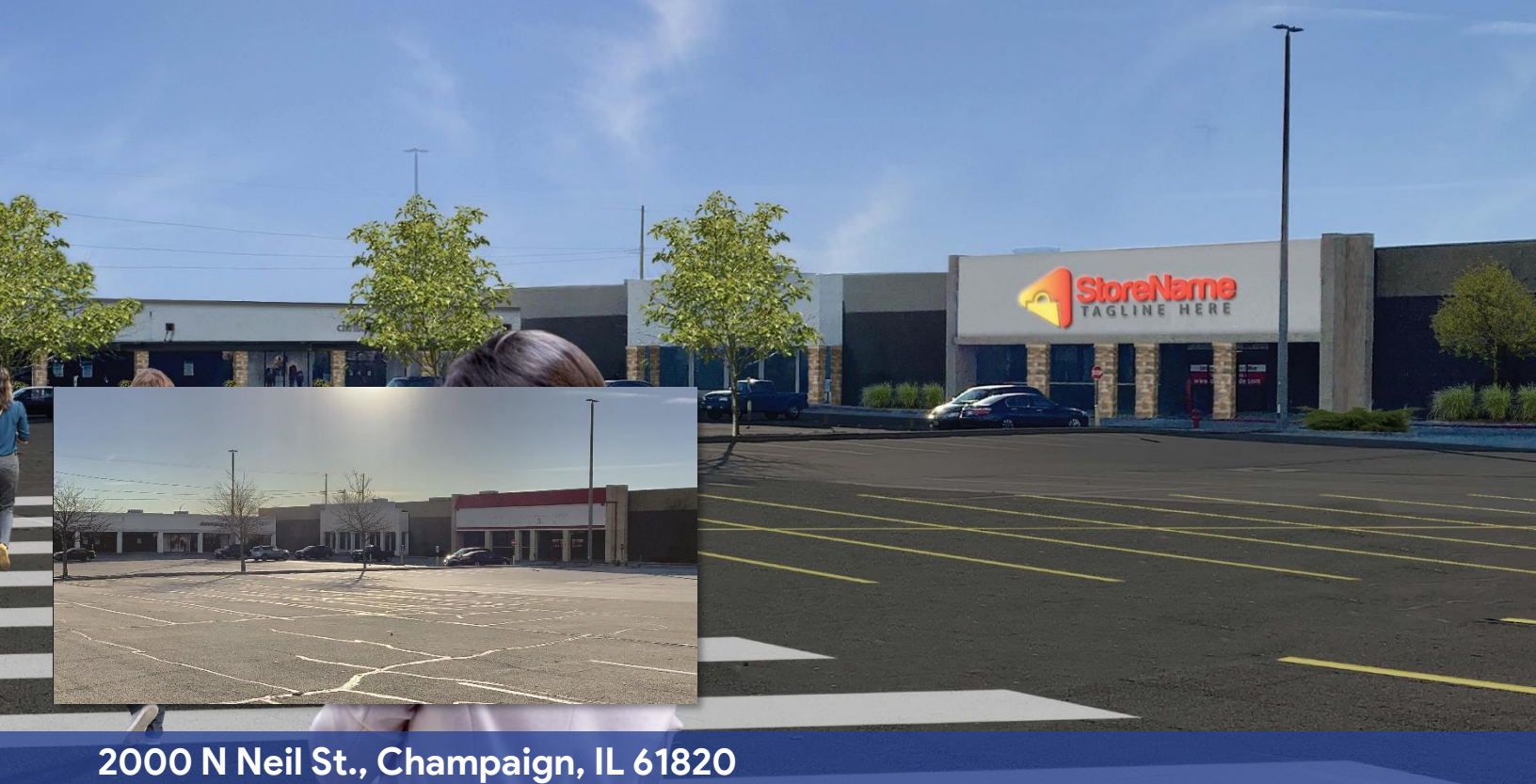


FOR LEASE

\$17.00 / SF NNN



2000 N Neil St., Champaign, IL 61820

Property Information

AVAILABLE SF FOR LEASE
2,000 – 16,200

BUILDING SF
200,000+

ZONING

Commercial General

AREA DESCRIPTION

Anchor tenants for the center include: Kohl's, Gordmans, Office Depot, and Maurices. Other area retailers include: Panera Bread, McDonalds, Old Chicago, Dick's Sporting Goods, Old Navy, JC Penny, and many more.

N Neil St. – 13,000 AADT
E Marketview Dr. – 8,700 AADT

PROPERTY DESCRIPTION

Marketplace Shopping Center offers a prime commercial site that is unmatched in the region located between Chicago, St. Louis, and Indianapolis. Currently 3 suites are available.

T-7: 2,000 SF
T-8: 3,000 SF
T-16: 16,200 SF

Jay Sikorski
217-352-7712
jas@cbcdr.com

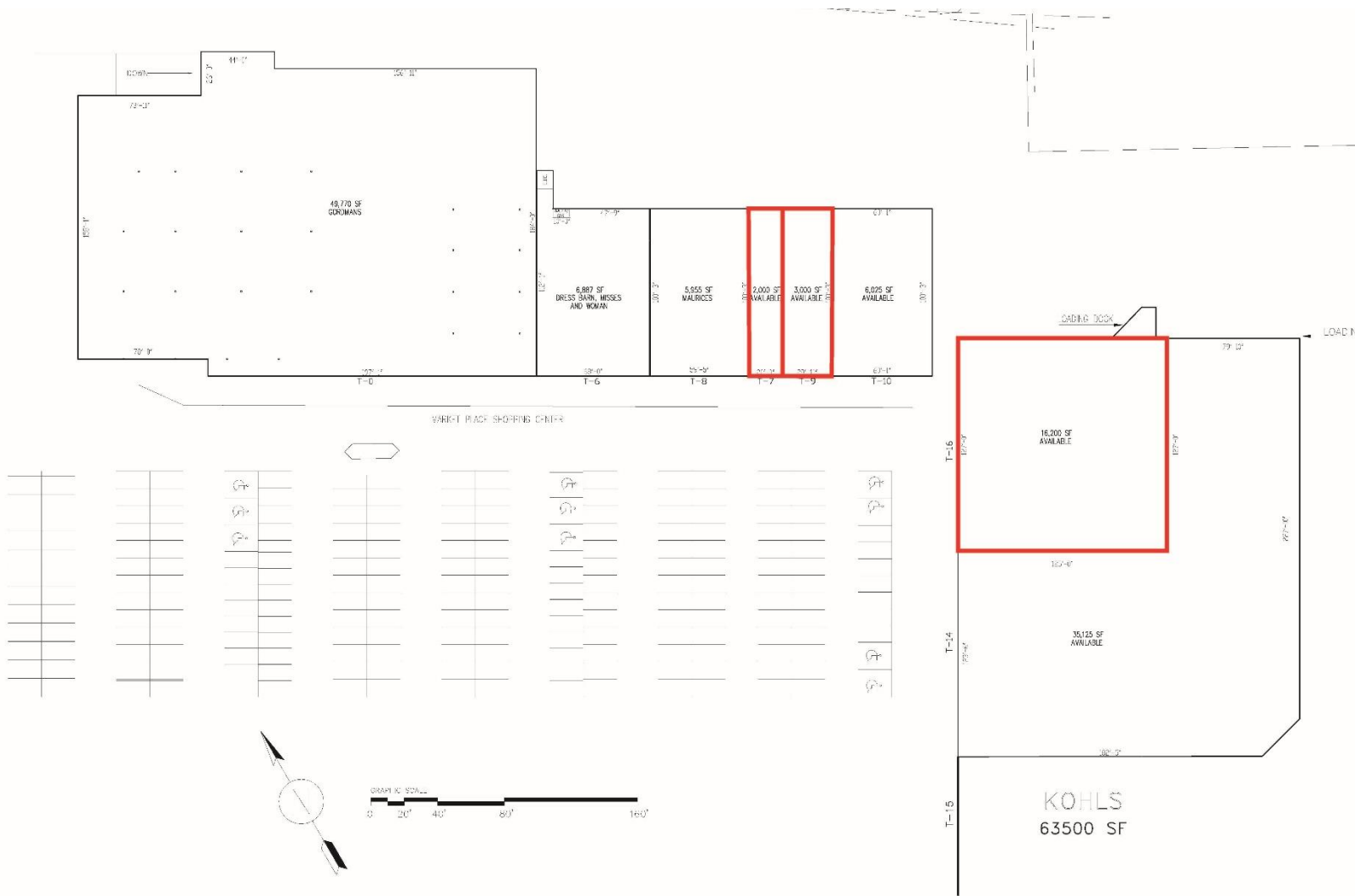


CBCDR.COM

©2017 Coldwell Banker Real Estate LLC, dba Coldwell Banker Commercial Affiliates. All Rights Reserved. Coldwell Banker Real Estate LLC, dba Coldwell Banker Commercial Affiliates fully supports the principles of the Equal Opportunity Act. Each Office is Independently Owned and Operated. Coldwell Banker Commercial and the Coldwell Banker Commercial Logo are registered service marks owned by Coldwell Banker Real Estate LLC, dba Coldwell Banker Commercial Affiliates.

Coldwell Banker Commercial
Devonshire Realty
201 W. Springfield Ave., 11th Fl.
Champaign, Illinois 61820
217-352-7712

Site Plan



Jay Sikorski
217-352-7712
jas@cbcdr.com



CBCDR.COM

©2017 Coldwell Banker Real Estate LLC, dba Coldwell Banker Commercial Affiliates. All Rights Reserved. Coldwell Banker Real Estate LLC, dba Coldwell Banker Commercial Affiliates fully supports the principles of the Equal Opportunity Act. Each Office is Independently Owned and Operated. Coldwell Banker Commercial and the Coldwell Banker Commercial Logo are registered service marks owned by Coldwell Banker Real Estate LLC, dba Coldwell Banker Commercial Affiliates.

Coldwell Banker Commercial
Devonshire Realty
201 W. Springfield Ave., 11th Fl.
Champaign, Illinois 61820
217-352-7712