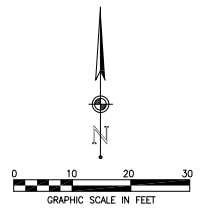


TRAFFIC CONTROL NOTES:

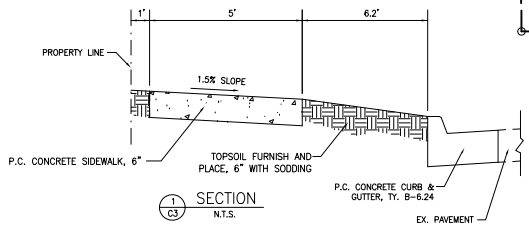
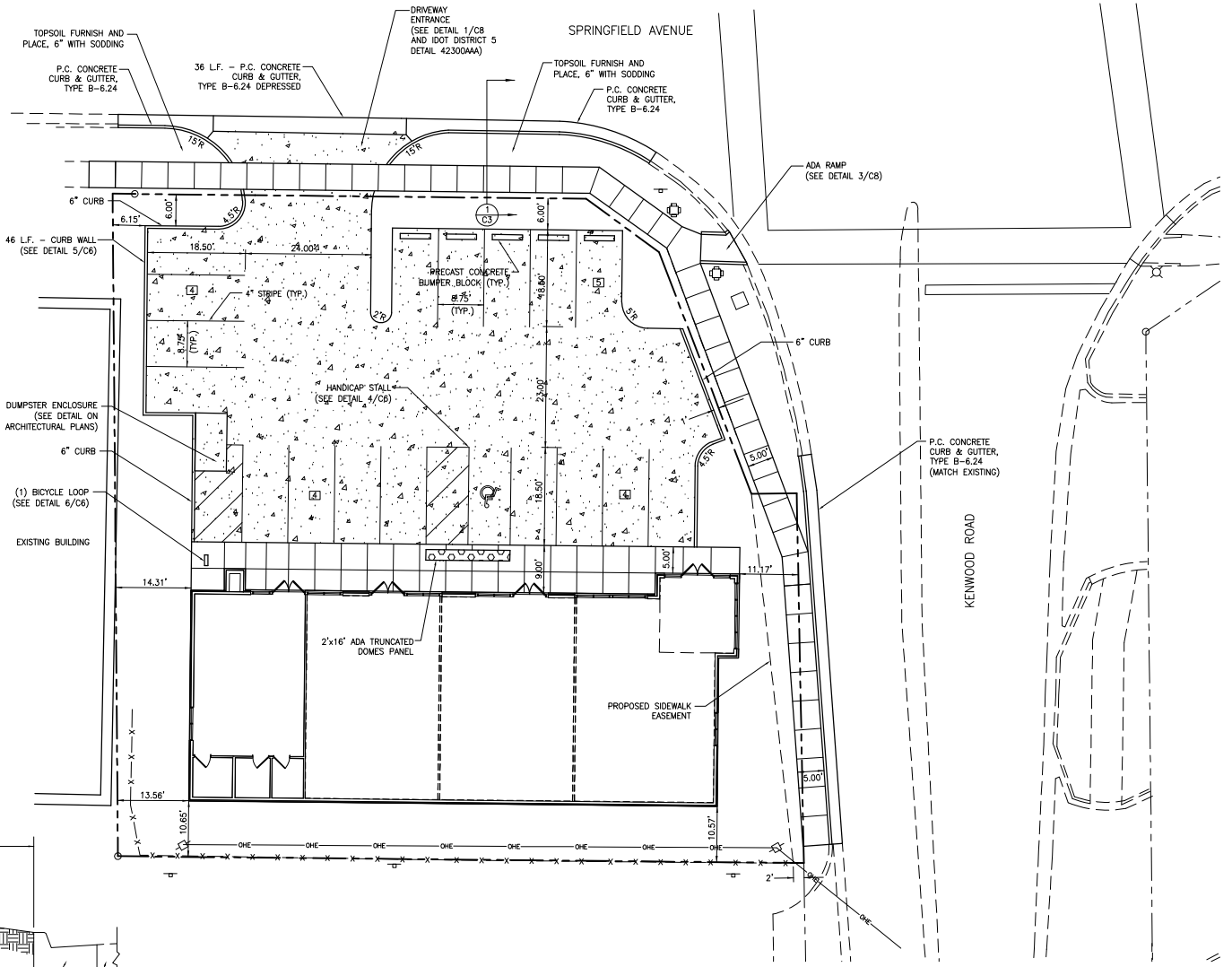
- CONTRACTOR SHALL PROVIDE TRAFFIC CONTROL IN ACCORDANCE WITH IDOT HIGHWAY STANDARD 701806-10, 701801-06 AND 701901-05.
- SEE ILLINOIS HIGHWAY STANDARDS FOR TRAFFIC CONTROL DATED JANUARY 2015 FOR ADDITIONAL REQUIREMENTS.



- SHEET LEGEND**
- PORTLAND CEMENT CONCRETE PAVEMENT, 7"
 - ADA TRUNCATED DOMES
 - PORTLAND CEMENT CONCRETE SIDEWALK, 6"
 - PARKING COUNT
- NOTE: DIMENSIONS ARE TO FACE OF CURB, UNLESS NOTED
RADI ARE TO BACK OF CURB

PAVING CONSTRUCTION NOTES:

- PAVEMENT SHALL BE CONSTRUCTED IN ACCORDANCE WITH THE PLANS, THE "STANDARD SPECIFICATIONS FOR ROAD AND BRIDGE CONSTRUCTION" IN ILLINOIS, LATEST EDITION AND CITY OF CHAMPAIGN ORDINANCES.
- COMBINATION CURB & GUTTER SHALL BE CONSTRUCTED IN ACCORDANCE WITH IDOT HIGHWAY STANDARD 606001-06.
- DRIVEWAY PAVEMENT SHALL BE NON-REINFORCED PORTLAND CEMENT CONCRETE PAVEMENT, CLASS PV, 7".
- PAVEMENT SHALL BE SAWS WITH CONTRACTION JOINTS AT A MAXIMUM OF 12 FOOT INTERVALS.
- LONGITUDINAL CONSTRUCTION JOINTS SHALL BE TIED WITH #4 EPOXY COATED DEFORMED TIE BARS, 30-INCH LONG AT 30-INCH INTERVALS. ALL JOINT PATTERNS ARE TO BE APPROVED BY THE OWNER.
- SAWING OF JOINTS SHALL COMMENCE AS SOON AS THE CONCRETE HAS HARDENED SUFFICIENTLY TO PERMIT SAWING WITHOUT EXCESSIVE REVELLING, BUT NO LATER THAN TEN (10) HOURS AFTER THE CONCRETE HAS BEEN PLACED. ALL JOINTS SHALL BE SAWS TO THE FULL DEPTH AS SHOWN IN THE DETAILS, BEFORE UNCONTROLLED SHRINKAGE CRACKING TAKES PLACE.
- JOINT SEALER SHALL BE PROVIDED AT ALL PAVEMENT JOINTS. JOINT SEALER SHALL BE POLYURETHANE SELF-LEVELING SEALER. COLOR TO MATCH NEW CONCRETE.
- THE SUBGRADE SHALL BE PREPARED SO THAT AFTER COMPACTION IT WILL CONFORM TO THE ALIGNMENT, GRADE AND CROSS-SECTION SHOWN ON THE PLANS. SOFT AND UNSTABLE MATERIAL THAT WILL NOT COMPACT SHALL BE REMOVED AND REPLACED. THE ENTIRE SUBGRADE SHALL BE COMPACTED TO NOT LESS THAN NINETY-FIVE PERCENT (95%) OF THE STANDARD LABORATORY DENSITY. TOPSOIL MATERIALS SHALL NOT BE UTILIZED FOR SUBGRADES.
- PCC SIDEWALK SHALL BE 6" THICK UNLESS OTHERWISE NOTED. CROSS SLOPES SHALL BE 1.5%. SCORE JOINTS ARE TO BE HAND TOOLED AT 1/2" NOMINAL DEPTH AND AT 5'-0" ON CENTER.
- ALL CONCRETE BUMPER BLOCKS SHALL BE PRECAST WITH 3000 PSI CONCRETE (MIN.) AND CONTAIN (2) #3 REBARS. THE DIMENSIONS OF THE BLOCK SHALL BE 6" LONG BY 9" WIDE. BLOCKS SHALL BE ANCHORED INTO PAVEMENT WITH (2) #4 REBARS.
- CONTACT HARMAN JORDAN (CITY OF CHAMPAIGN ENGINEERING DEPARTMENT 403-4710) AT LEAST 48 HOURS IN ADVANCE OF THE START OR RESTART OF ANY WORK WITHIN THE CITY RIGHT-OF-WAY.



REVISIONS NO.	DATE	DESCRIPTION
1	4/10/17	IDOT REVISIONS
2	5/15/17	CITY REVISIONS
3	5/29/17	CITY REVISIONS



301 N. NIEL STREET, SUITE 403 | CHAMPAIGN, IL 61820
CELL: 217.840.3646 | OFFICE: 217.531.2971 | FAX: 217.531.2211

SITE LAYOUT PLAN
NEW RETAIL BUILDING
2401 W. SPRINGFIELD AVE.
CHAMPAIGN, ILLINOIS

PROJECT: 40-1608
DESIGN BY: BKB
DRAWN BY: BKB
DATE: 3/14/17
SHEET: