

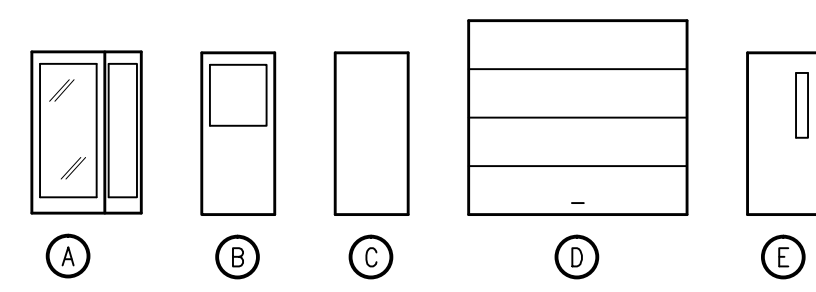
**WOMEN**  
SCALE: 1/4" = 1'-0"

**ROOM FINISH SCHEDULE**

ROOM	FLOOR		WALLS				CEILING	REMARKS	
	ROOM NAME	FLOOR	BASE	N	E	S	W		CEILING
PARKING #1	SEALED CONC.	-	GPDW	GPDW	GPDW	GPDW	GPDW	GPDW	
PARKING #2	SEALED CONC.	-	GPDW	GPDW	GPDW	GPDW	GPDW	GPDW	
INTERVIEW #1	CARPET TILE	RUBBER	GPDW	GPDW	GPDW	GPDW	GPDW	A.T.C.	
INTERVIEW #2	CARPET TILE	RUBBER	GPDW	GPDW	GPDW	GPDW	GPDW	A.T.C.	
SUPERVISOR	CARPET TILE	RUBBER	GPDW	GPDW	GPDW	GPDW	GPDW	A.T.C.	
RECEPTION	TILE	RUBBER	GPDW	GPDW	GPDW	GPDW	GPDW	A.T.C.	
HALL	CARPET TILE	RUBBER	GPDW	GPDW	GPDW	GPDW	GPDW	A.T.C.	
MEN	TILE	RUBBER	GPDW	GPDW	GPDW	GPDW	GPDW	A.T.C.	
WOMEN	TILE	RUBBER	GPDW	GPDW	GPDW	GPDW	GPDW	A.T.C.	
BREAK	CARPET TILE	RUBBER	GPDW	GPDW	GPDW	GPDW	GPDW	A.T.C.	
OPEN OFFICE	CARPET TILE	RUBBER	GPDW	GPDW	GPDW	GPDW	GPDW	A.T.C.	
COMPUTER	VINYL TILE	RUBBER	GPDW	GPDW	GPDW	GPDW	GPDW	A.T.C.	
EVIDENCE	VINYL TILE	RUBBER	GPDW	GPDW	GPDW	GPDW	GPDW	A.T.C.	
PROCESSING #1	VINYL TILE	RUBBER	GPDW	GPDW	GPDW	GPDW	GPDW	GPDW	
PROCESSING #2	VINYL TILE	RUBBER	GPDW	GPDW	GPDW	GPDW	GPDW	GPDW	
JANITOR	SEALED CONC.	-	GPDW	GPDW	GPDW	GPDW	GPDW	GPDW	
MECHANICAL	SEALED CONC.	-	GPDW	GPDW	GPDW	GPDW	GPDW	GPDW	
STORAGE	CARPET TILE	RUBBER	GPDW	GPDW	GPDW	GPDW	GPDW	GPDW	

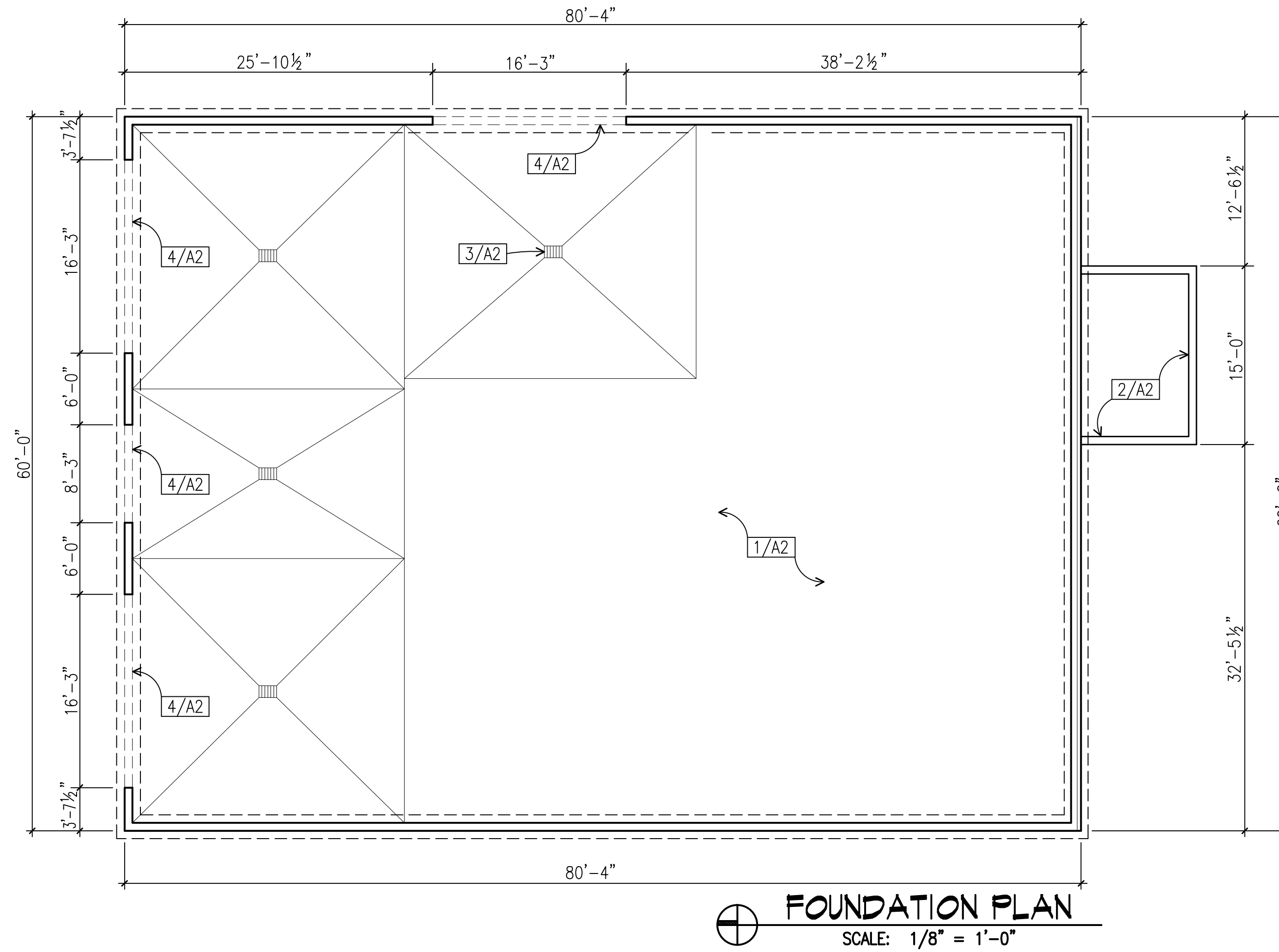
**DOOR SCHEDULE**

DOOR		FRAME		HDW. SET	REMARKS	
NO.	LOCATION	TYPE	SIZE	MATERIAL		TYPE
1	EXTERIOR	A	3'-0"x6'-8"x1 1/2"	WOOD		WOOD
2	RECEPTION	B	3'-0"x6'-8"x1 1/2"	WOOD		WOOD
3	SUPERVISOR	C	3'-0"x6'-8"x1 1/2"	WOOD		WOOD
4	INTERVIEW #2	C	3'-0"x6'-8"x1 1/2"	WOOD		WOOD
5	INTERVIEW #2	C	3'-0"x6'-8"x1 1/2"	WOOD		WOOD
6	WOMEN	C	3'-0"x6'-8"x1 1/2"	WOOD		WOOD
7	MEN	C	3'-0"x6'-8"x1 1/2"	WOOD		WOOD
8	BREAK	C	3'-0"x6'-8"x1 1/2"	WOOD		WOOD
9	CLOSET	C	3'-0"x6'-8"x1 1/2"	WOOD		WOOD
10	PARKING #2	C	3'-0"x6'-8"x1 1/2"	INSUL. METAL		METAL
11	PROCESSING #1	E	3'-0"x6'-8"x1 1/2"	STEEL		METAL
12	PROCESSING #2	E	3'-0"x6'-8"x1 1/2"	STEEL		METAL
13	COMPUTER	C	3'-0"x6'-8"x1 1/2"	WOOD		WOOD
14	EVIDENCE	C	3'-0"x6'-8"x1 1/2"	HOLLOW METAL		METAL
15	PARKING #1	C	3'-0"x6'-8"x1 1/2"	INSUL. METAL		METAL
16	JANITOR	C	3'-0"x6'-8"x1 1/2"	METAL		METAL
17	MECHANICAL	C	(2) 2'-6"x6'-8"x1 1/2"	METAL		METAL
18	PARKING #1	D	16'-0"x8'-0"x2"	INSUL. STEEL		WOOD
19	PARKING #1	D	8'-0"x8'-0"x2"	INSUL. STEEL		WOOD
20	PARKING #1	D	16'-0"x8'-0"x2"	INSUL. STEEL		WOOD
21	PARKING #2	C	3'-0"x6'-8"x1 1/2"	INSUL. METAL		METAL
22	PARKING #2	D	16'-0"x8'-0"x2"	INSUL. STEEL		WOOD
23	PARKING #2	C	3'-0"x6'-8"x1 1/2"	INSUL. METAL		WOOD
24	STORAGE	C	3'-0"x6'-8"x1 1/2"	WOOD		WOOD
25	EXTERIOR	C	3'-0"x6'-8"x1 1/2"	INSUL. METAL		METAL

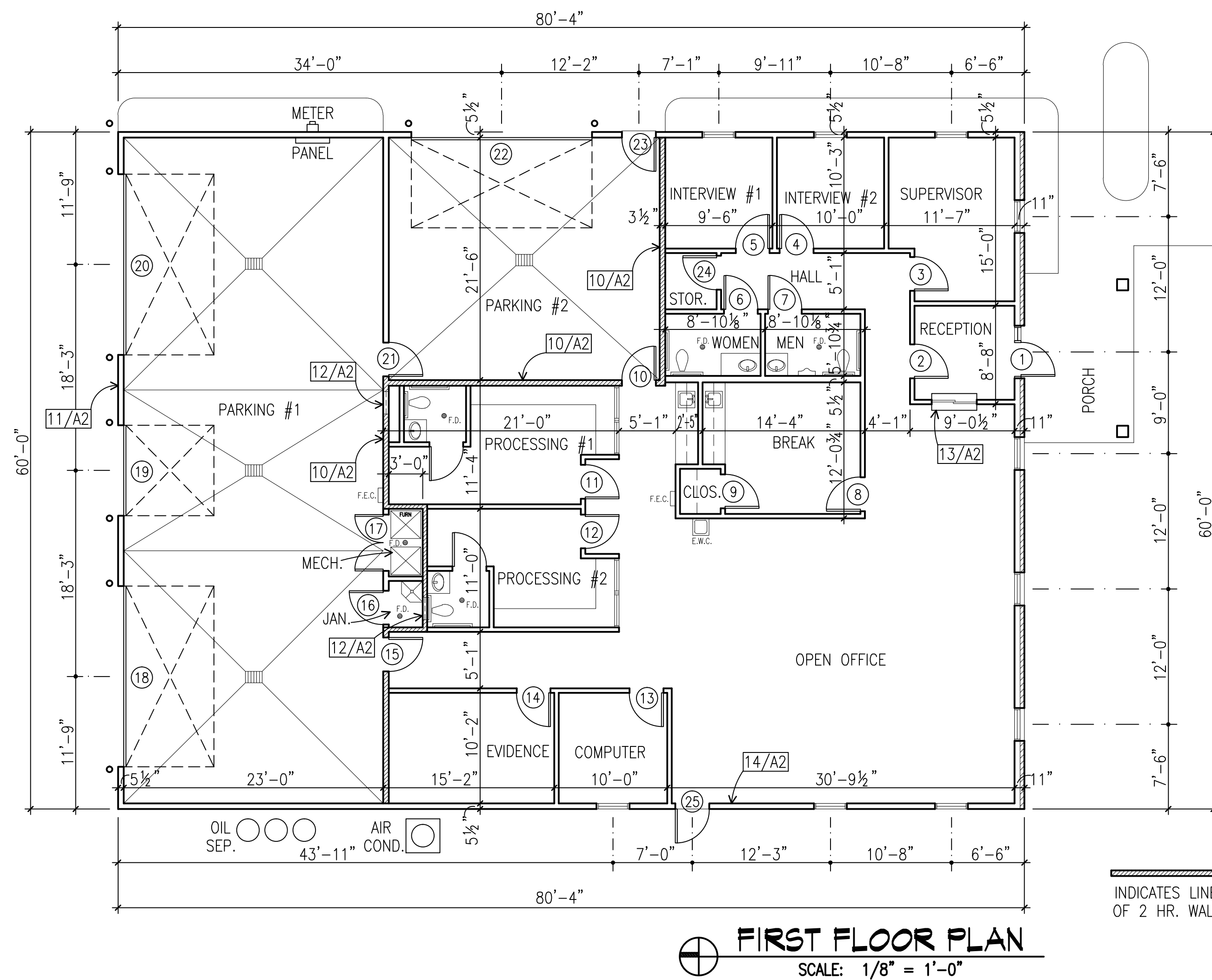


PROVIDE LEVER HANDLES ON ALL DOOR HARDWARE

DOOR TYPES:



**FOUNDATION PLAN**  
SCALE: 1/8" = 1'-0"



**FIRST FLOOR PLAN**  
SCALE: 1/8" = 1'-0"

**GENERAL NOTES:**

- A. PROVIDE CONTROL JOINTS @ SLAB @ 25'-0" O.C. MAX.
- B. DIMENSIONS ARE TO EDGE OF CONC. OR TO FACE OF STUDS.
- C. PROVIDE SPRINKLER HEAD IN MECHANICAL ROOM.

**KEYED NOTES:**

- 1. 4" CONC. SLAB, W/ FIBERMESH, VAPOR RETARDER & 6" MIN. COMPACTED FILL.
- 2. 8" REINFORCED CONC. GRADE BEAM BELOW PORCH.
- 3. FLOOR DRAIN & OIL INTERCEPTOR. SLOPE FLOORS TO DRAIN.
- 4. PROVIDE NOTCH IN FOUNDATION WALL FOR O.H. DOOR SILL.
- 10. 2 HR. RATED WALL - FLOOR TO BOTTOM OF ROOF SHEATHING. (2) 5/8" GPDW-X BOTH SIDES OF 3 1/2" METAL STUDS @ 16" O.C. (UL# U425)
- 11. FULL HT. WALL TO ROOF 4x6 STUDS @ 2'-0" O.C. - #2 SYP 1/2" PLYWOOD C-C W/ 10d NAILS @ 3" O.C. STAGGER EDGES - BLOCK ALL PLYWOOD EDGES W/ 4x6
- 12. 1 1/2" HR. ACCESS PANEL OR DOOR
- 13. PASS THRU WINDOW AS PER AGENCY REQUIREMENTS
- 14. EXTEND GPDW TO UNDERSIDE OF ROOF DECK ALONG ENTIRE LENGTH OF WEST WALL.

**PROJECT:**

OFFICE BUILDING  
2261 STANTON AVE.  
SPRINGFIELD, ILLINOIS

**ARCHITECT:**

JOHN M. SHAFER  
1204 S. FIFTH ST.  
SPFLD., ILLINOIS 62703  
(217) 744-9036

DATE	19/DEC/96	REV.	#	DATE
SCALE			1	08/JAN/97
DRAWN	KLH			
FILE	9621-A2			
SHEET				