



**COLDWELL
BANKER
COMMERCIAL**
DEVONSHIRE REALTY

WHITELINE – RETAIL FOR LEASE

\$16.00 / SF / Gross



FOR LEASE



723 S. Neil Street,

Champaign, IL 61820

OFFICE

RETAIL

LEASE PRICE

\$16.00 / SF

LEASE TYPE

Gross

AVAILABLE SPACE

Suite 101: 5,600 SF

Suite 103: 3,064 SF

BUILDING SIZE

25,000 SF

ZONING

CG – Commercial
General

PROPERTY DESCRIPTION

Suite 101 is the former Mexican restaurant which consists of 5,600 SF of space, bar area, inside dining area, and outside patio area. Suite 103 is 3,064 SF of open retail with access to common area restrooms down the hall. Signage is available above the facade of the space and there is a free standing monument sign along south Neil Street tenants have access too.

PROPERTY HIGHLIGHTS

- Great Location on Neil Street
- Former Restaurant Space
- Move-In Ready

AREA DESCRIPTION

Property is located along south Neil Street, Route 45, in the Whiteline building. It is centrally located in Champaign. Area businesses include Flat Branch Mortgage, Upper Bout, Bacon Van Buskirk. The University of Illinois campus is located to the east.



ZACH WETHERELL, CCIM

217-403-3374
zw@cbcdr.com



AJ THOMA III, CCIM

217-403-3425
ajt@cbcdr.com



CBCDR.COM

**COLDWELL BANKER COMMERCIAL
DEVONSHIRE REALTY**

201 W Springfield Ave. 11th Floor
Champaign, IL 61820
217-352-7712

© 2020 Coldwell Banker Real Estate LLC, Coldwell Banker Commercial Affiliates. All Rights Reserved. Coldwell Banker Real Estate LLC, Coldwell Banker Commercial Affiliates fully supports the principles of the Equal Opportunity Act. Each Office is Independently Owned and Operated. Coldwell Banker Commercial and the Coldwell Banker Commercial Logo are registered service marks owned by Coldwell Banker Real Estate LLC, dba Coldwell Banker Commercial Affiliates.



**COLDWELL
BANKER
COMMERCIAL**
DEVONSHIRE REALTY

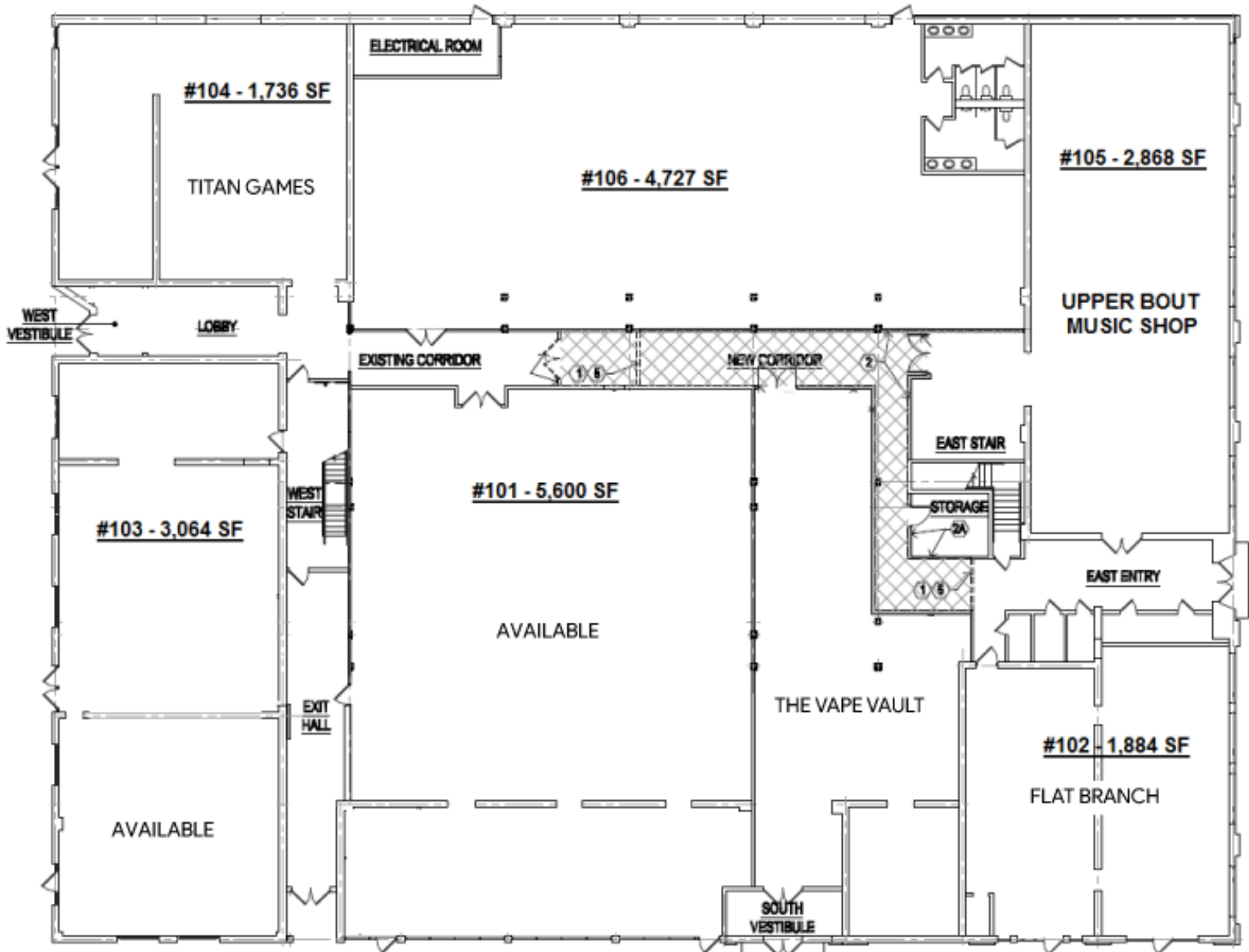
WHITELINE – RETAIL FOR LEASE

\$16.00 / SF / Gross



FOR LEASE

FLOOR PLAN



ZACH WETHERELL, CCIM
217-403-3374
zw@cbcdr.com



AJ THOMA III, CCIM
217-403-3425
ajt@cbcdr.com

CBCDR.COM