



## 821 BLOOMINGTON ROAD,

Champaign, IL 61820

1,800 SF

RETAIL

### LEASE PRICE

\$ Negotiable

### AVAILABLE SF

1,800 SF

### LEASE TYPE

NNN

### YEAR BUILT

1980

### TAX PIN

41-20-01-351-032

### ZONING

CG – Commercial  
General

### PROPERTY DESCRIPTION

Pioneer Plaza is a 29,075 square foot shopping center at the corner of North Prospect Avenue and Bloomington Road in Champaign, IL. 821 Bloomington Road is +/- 1,800 square feet and mostly open with large windows, back office, restroom, and utility / storage room. Signage is available on the building's facade, as well as on two pylon signs along Prospect Avenue and Bloomington Road. Abundant parking is also available in the shopping center's shared parking lot.

### AREA DESCRIPTION

Pioneer Plaza is located at the southeast corner of Prospect Avenue & Bloomington Road, and boasts high traffic counts, great visibility, and easy access to Interstate 74. Walgreens and Arby's are immediately in front of the shopping center, while Jimmy John's, McDonald's, The Home Depot, and Tire Barn are in the immediate vicinity. Other tenants in Pioneer Plaza include Rent-A-Center, Dollar General, Promise Healthcare, Walgreens, Arby's, and others.



**JOSH MARKIEWICZ**

217-403-3424

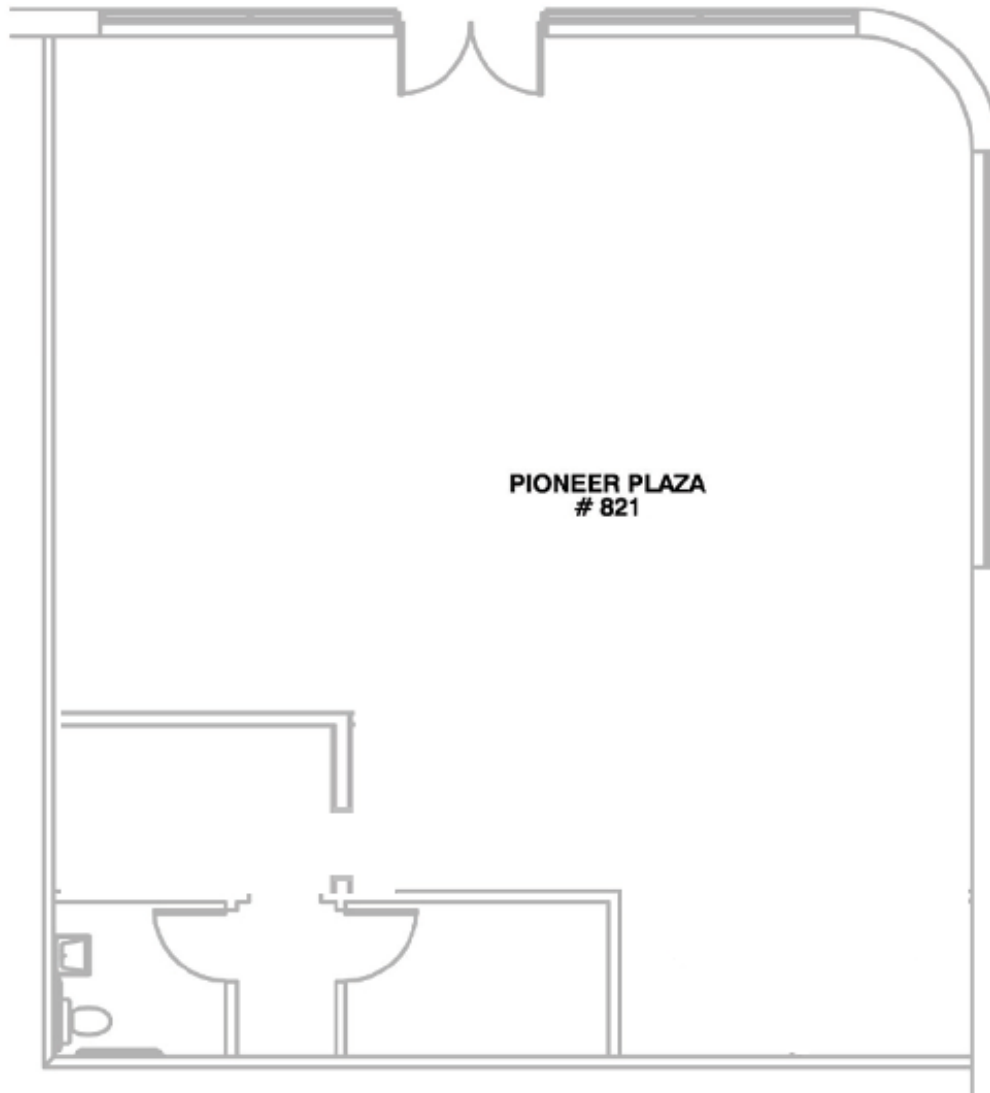
joshm@cbcdr.com



CBCDR.COM



## FLOOR PLAN



**JOSH MARKIEWICZ**

217-403-3424

joshm@cbcdr.com



CBCDR.COM