



30 E. Main, Champaign, IL 61820

2,400 SF

OFFICE

LEASE PRICE

\$16.00 SF

LEASE TYPE

Gross

TAX PIN

42-20-12-429-013

PARKING

24 Minimum

BUILDING SIZE

38,640 SF

AVAILABLE SPACE

2,400 SF

ZONING

CB2

YEAR BUILT

1910

PROPERTY DESCRIPTION

Historic building in downtown Champaign. Second floor office space available with elevator access. Office space has five large offices (all with windows) and open area in the middle. Restrooms are common area restrooms and not ADA accessible. Parking is located on the west side of the building in a gated lot at an additional charge to tenants.

AREA DESCRIPTION

Located downtown Champaign, this redevelopment is mixed-use featuring an attractive design which exudes a vintage, urban vibe. The building was originally constructed around 1910 and has been used as several banks since its construction. Surrounded by dozens of restaurants, bars, and local shops this redevelopment is in the heart of the action. The local music scene, outdoor dining venues and numerous downtown summer festivals add to the buzz and popularity. The walkability of downtown Champaign makes it a popular gathering place for locals and enhances the areas attractiveness and sustainability.



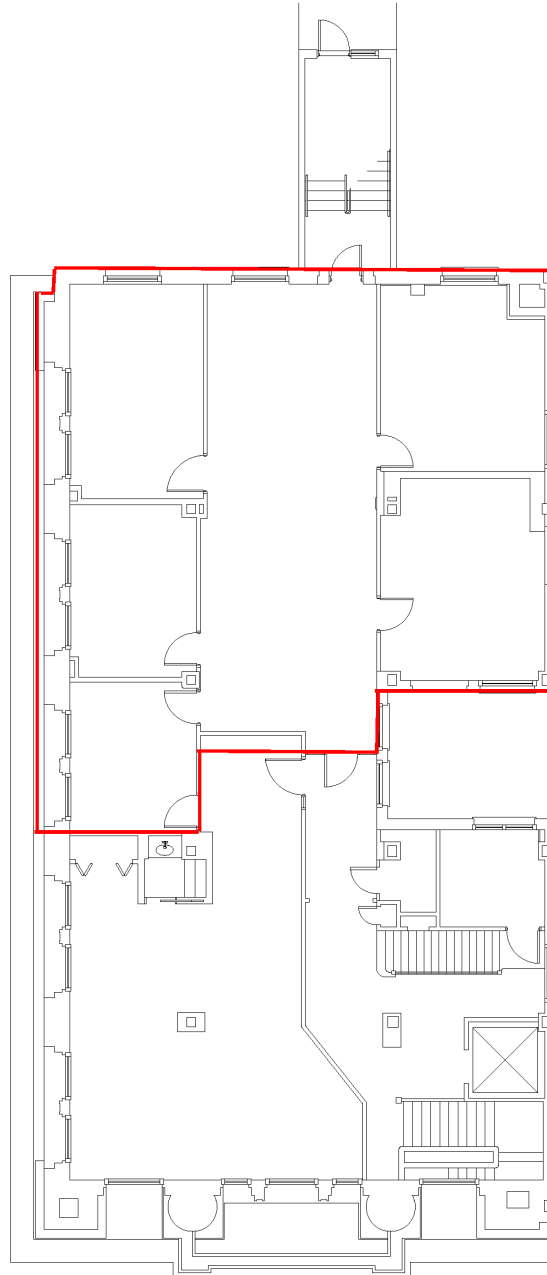
ZACH WETHERELL, CCIM

217-403-3374

zw@cbcdr.com

  
CBCDR.COM

FLOOR PLAN



ZACH WETHERELL, CCIM

217-403-3374
zw@cbcdr.com