



**COLDWELL BANKER  
COMMERCIAL**  
DEVONSHIRE  
REALTY

## CORPORATE CENTER

\$12.00 / SF / NNN

FOR LEASE



### 2004 Fox Drive, STES C, D, E, K

Champaign, IL 61820

### PROPERTY DESCRIPTION

2004 Fox Drive is a +/- 25,100 SF multi-tenant office building constructed in 1988 and features a brick façade, plentiful parking and is centrally located in the community.

700 – 2,500 SF

OFFICE

**Suite C** is located on the northwest side of the building and consists of 1,500 SF with lobby space, three offices, and open work space. The restrooms are common area restrooms. The building does have a monument sign along Fox Drive. Building is located along the MTD bus route.

**Suite D** is located on the north side of the building and consists of 700 SF. The space has three offices, open area, and common area restrooms.

**Suite E** is located on the northeast side of the building and consists of 1,752 SF with one large open room, Four large offices, two storage room/smaller offices, conference room. The restrooms are common area restrooms.

**Suite K** is located in the southwest corner of the building, consists of 2,500 SF, and has frontage along Fox Drive. The space is currently in shell condition and waiting to be fit up as a tenant.

### LEASE PRICE

\$12.00 SF

### BUILDING SIZE

25,100 SF

### AVAILABLE SPACE

Suite C – 1,500 SF

Suite D – 700 SF

Suite E – 1,752 SF

Suite K – 2,500 SF

### YEAR BUILT

1988

### ZONING

CO –  
Commercial  
Office

### TAX PIN

45-20-24-328-003, 004

### PARKING SPACES

97

### BUILDING CLASS

B

### AREA DESCRIPTION

Subject property is located in Corporate Center. Corporate Center runs along Fox Drive from St. Mary Road to Windsor Avenue to the south. It is centrally located in south Champaign with close proximity to the University of Illinois, Research Park and Carriage Center Shopping along Neil Street (21,000 vehicles/day). Corporate Center is home to several large employers including Jimmy Johns, Amdocs, and several University of Illinois departments. Restaurants and retail shopping within close proximity.



**JOSH MARKIEWICZ**

217-403-3424

[joshm@cbcdr.com](mailto:joshm@cbcdr.com)

[cbcdr.com](http://cbcdr.com)



**ZACH WETHERELL, CCIM**

217-403-3374

[zw@cbcdr.com](mailto:zw@cbcdr.com)

[cbcdr.com](http://cbcdr.com)



**COLDWELL BANKER COMMERCIAL  
DEVONSHIRE REALTY**

201 W Springfield Ave. 11th Floor  
Champaign, IL 61820  
217-352-7712

© 2020 Coldwell Banker Real Estate LLC, Coldwell Banker Commercial Affiliates. All Rights Reserved. Coldwell Banker Real Estate LLC, Coldwell Banker Commercial Affiliates fully supports the principles of the Equal Opportunity Act. Each Office is Independently Owned and Operated. Coldwell Banker Commercial and the Coldwell Banker Commercial Logo are registered service marks owned by Coldwell Banker Real Estate LLC, dba Coldwell Banker Commercial Affiliates.



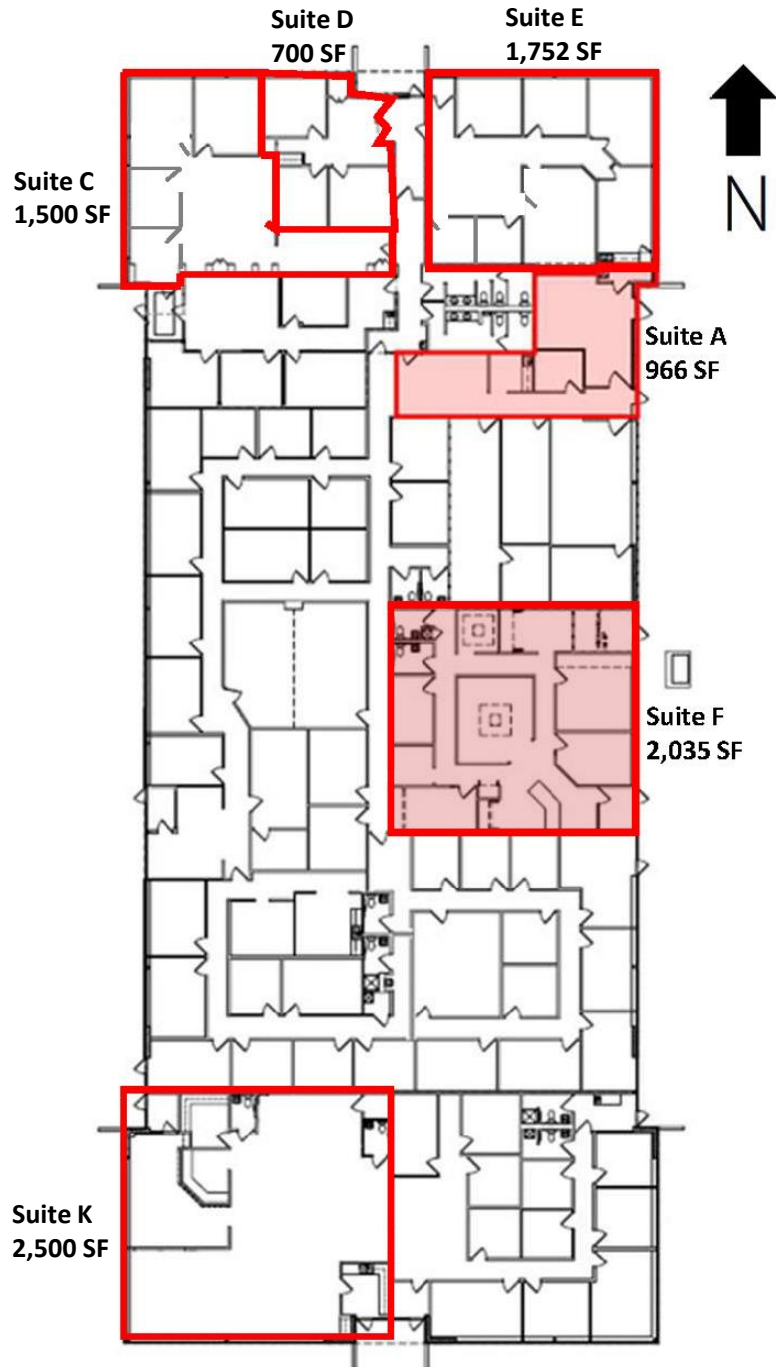
**COLDWELL BANKER  
COMMERCIAL**  
DEVONSHIRE  
REALTY

# CORPORATE CENTER

\$12.00 / SF / NNN

FOR  
LEASE

## FLOOR PLAN



**JOSH MARKIEWICZ**  
217-403-3424  
[joshm@cbcdr.com](mailto:joshm@cbcdr.com)  
cbcdr.com



**ZACH WETHERELL, CCIM**  
217-403-3374  
[zw@cbcdr.com](mailto:zw@cbcdr.com)  
cbcdr.com



**COLDWELL BANKER COMMERCIAL  
DEVONSHIRE REALTY**

201 W Springfield Ave. 11th Floor  
Champaign, IL 61820  
217-352-7712

© 2020 Coldwell Banker Real Estate LLC, Coldwell Banker Commercial Affiliates. All Rights Reserved. Coldwell Banker Real Estate LLC, Coldwell Banker Commercial Affiliates fully supports the principles of the Equal Opportunity Act. Each Office is Independently Owned and Operated. Coldwell Banker Commercial and the Coldwell Banker Commercial Logo are registered service marks owned by Coldwell Banker Real Estate LLC, dba Coldwell Banker Commercial Affiliates.