

## MARKETING PACKAGE

# Shoppes of Knollwood

2131-2229 S Neil Street  
Champaign, IL 61820

## PRESENTED BY:

**JOSH MARKIEWICZ**  
**217.403.3424**  
[joshm@cbcdr.com](mailto:joshm@cbcdr.com)

**ZACH WETHERELL, CCIM**  
**217.403.3374**  
[zw@cbcdr.com](mailto:zw@cbcdr.com)



## MARKETING PACKAGE



## PROPERTY OVERVIEW

Lease Price	\$15.00/SF NNN
Available Space	+/- 1,462 – 3,046 SF
Total Building Size	+/- 38,517 SF
Year Built	1998
NNN Expenses	\$6.71 - \$7.10 PSF
Zoning	CG – Commercial General

## AREA DESCRIPTION

Located at the northwest corner of South Neil Street and Knollwood Drive, the Shoppes of Knollwood is a well-known retail destination with tenants including Le Peep, Natural Gourmet, Charles Schwab, Champaign Jewelry, Edward Jones, and many more. The Shoppes of Knollwood is adjacent to Corporate Center; a 650,000 SF office campus, and just west of the University of Illinois Research Park, with 700,000 SF of office space. Its location provides convenient access to the University of Illinois, residential neighborhoods to the south and southwest, Willard Airport, and downtown Champaign.

## SHOPPES OF KNOLLWOOD

The Shoppes of Knollwood is a two-building, 38,517 SF shopping center built in 1998, and ideally located at the lighted intersection of South Neil Street and Knollwood Drive. The Shoppes of Knollwood features an attractive brick facade, large parking field, pylon signage along South Neil Street, and the wide variety of tenants in the shopping center are major traffic drivers for the area. Current availability:

**2131 S Neil Street** is +/- 1,600 SF and located on the north endcap of the north building and features a drive-thru, wide open space with a service counter, and a single restroom.

**2141 S Neil Street** is +/- 1,462 SF and located in the north building, and is wide open with a restroom in the rear of the suite. Suite could be combined with 2143 to create 3,046 SF.

**2143 S Neil Street** is +/- 1,584 SF and located in the north building, and was most recently used as a medical office. It features a reception area, large open work area, 3 exam rooms, restroom, kitchenette, office, storage room, and janitors closet. Suite could be combined with 2141 to create 3,046 SF.

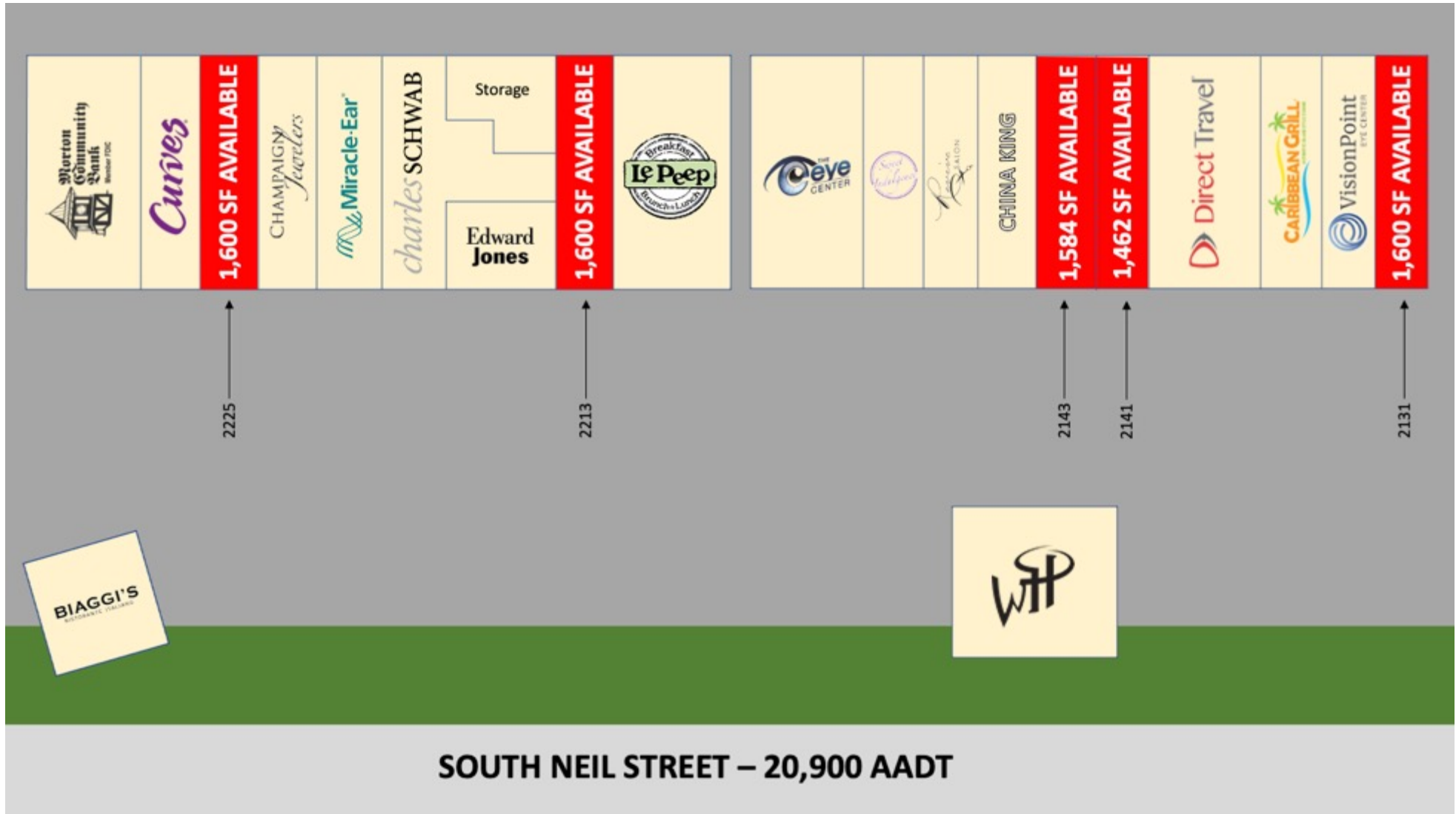
**2213 S Neil Street** is +/- 1,600 SF and located in the south building adjacent to Le Peep. The suite is wide open, with a back office, breakroom, and men's and women's restrooms.

**2225 S Neil Street** is +/- 1,600 SF and located in the south building. The suite has an open retail area with a restroom and storage area in the rear, and an office that was previously used for food preparation and has a 3-compartment sink.

NNN expenses: \$6.71/SF (South Building) and \$7.10/SF (North Building)



## MARKETING PACKAGE

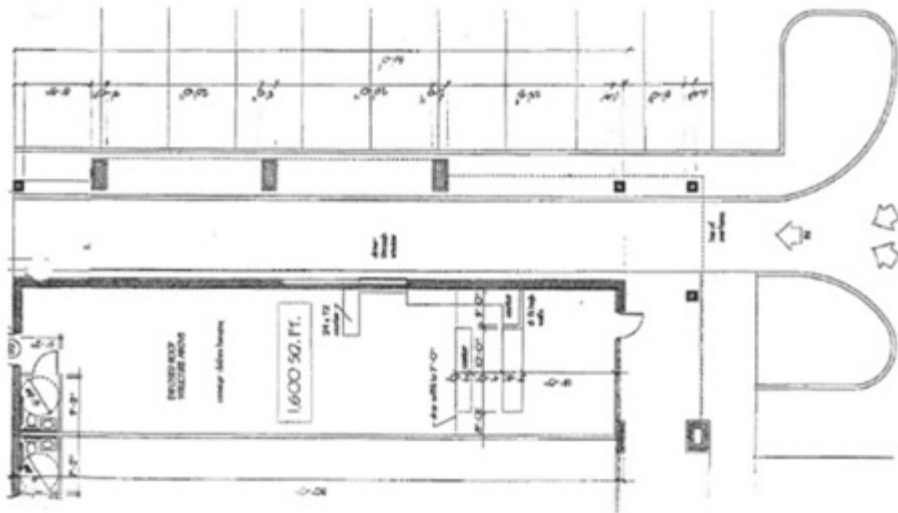


## MARKETING PACKAGE

## 2131 S NEIL STREET

Suite Size	+/- 1,600 SF
Asking Price	\$15.00/SF NNN
NNN Expenses	\$7.10/SF

**2131 S Neil Street** is +/- 1,600 SF and located on the north endcap of the north building and features a drive-thru, wide open space with a service counter, and a single restroom.



## MARKETING PACKAGE

## 2141 S NEIL STREET

Suite Size	+/- 1,462 SF
Asking Price	\$15.00/SF NNN
NNN Expenses	\$7.10/SF

**2141 S Neil Street** is +/- 1,462 SF and located in the north building, and is wide open with a restroom in the rear of the suite. Suite could be combined with 2143 to create 3,046 SF.

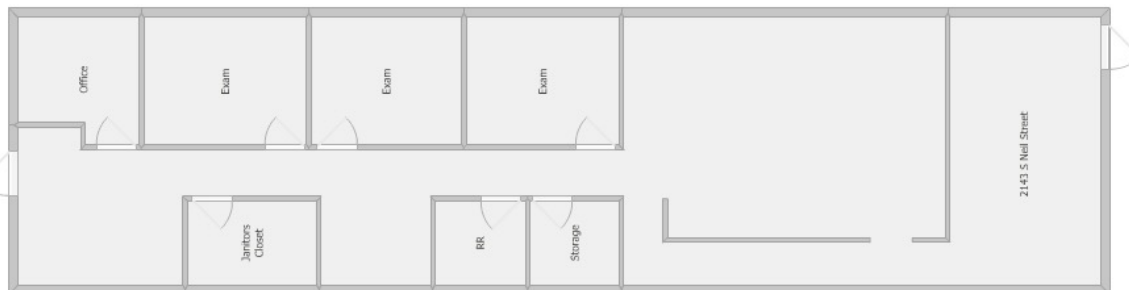


## MARKETING PACKAGE

## 2143 S NEIL STREET

Suite Size	+/- 1,584 SF
Asking Price	\$15.00/SF NNN
NNN Expenses	\$7.10/SF

**2143 S Neil Street** is +/- 1,584 SF and located in the north building, and was most recently used as a medical office. It features a reception area, large open work area, 3 exam rooms, restroom, kitchenette, office, storage room, and janitors closet. Suite could be combined with 2141 to create 3,046 SF.

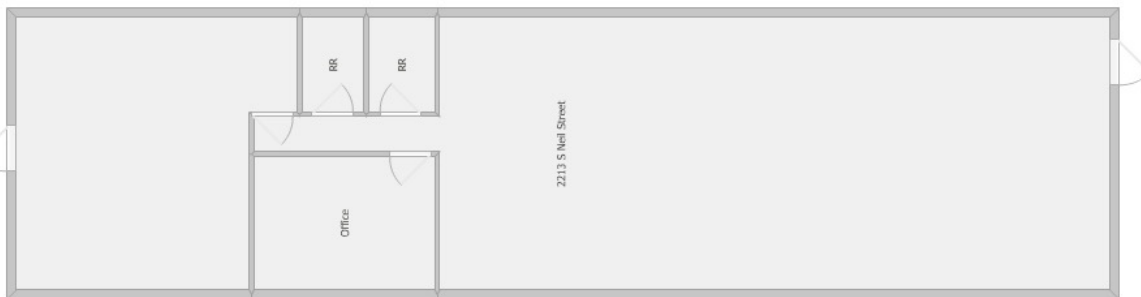


## MARKETING PACKAGE

## 2213 S NEIL STREET

Suite Size	+/- 1,600 SF
Asking Price	\$15.00/SF NNN
NNN Expenses	\$6.71/SF

**2213 S Neil Street** is +/- 1,600 SF and located in the south building adjacent to Le Peep. The suite is wide open, with a back office, breakroom, and men's and women's restrooms.



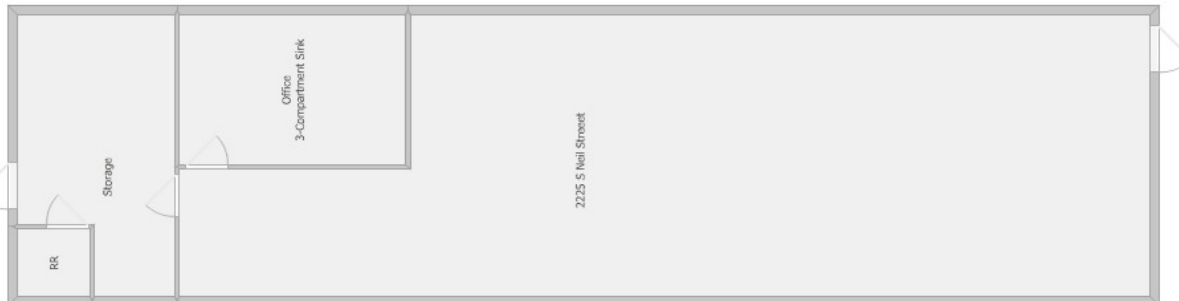


## MARKETING PACKAGE

## 2225 S NEIL STREET

Suite Size	+/- 1,600 SF
Asking Price	\$15.00/SF NNN
NNN Expenses	\$6.71/SF

**2225 S Neil Street** is +/- 1,600 SF and located in the south building. The suite has an open retail area with a restroom and storage area in the rear, and an office that was previously used for food prepareate and has a 3-compartment sink.





# MARKETING PACKAGE

