

Country Fair Shopping Center



**COLDWELL
BANKER
COMMERCIAL**

DEVONSHIRE REALTY

Country Fair Shopping Center

101 – 301 S. Mattis Ave
1910 – 2004 W. Springfield Ave.
230 – 250 Country Fair Dr.
Champaign, IL 61821



AJ Thoma III, CCIM, SIOR
217-403-3425
ajt@cbcdr.com

Zach Wetherell, CCIM
217-403-3374
zw@cbcdr.com

Country Fair Shopping Center

Property Description

Coldwell Banker Commercial Devonshire Realty (CBCDR) is proud to offer for lease Country Fair Shopping Center. Country Fair Shopping Center was originally built from 1958 – 1960 and was originally anchored by Goldblatt's Department Store and was East Central Illinois' first open air shopping malls. Currently there are several vacancies and outlots available:

Outlots – Available for Land Lease or Build to Suit

Lot 100 (1.00 Ac) (Negotiable)
Former site of the Chase Bank/Original movie Theatre on the hard corner of Springfield and Mattis Avenues.

Additional Outlots to be announced in the coming months.

In-Line Spaces

245 S. Mattis Ave (Suite 1A) (16,524 SF): \$8.00/SF
Former This is It Furniture – 80' x 206' of open retail space that is separated into front retail (12,800 SF) and rear stock room (3,724 SF) featuring 12' clear heights, mezzanine office, and an overhead door.

223 - 221 S. Mattis Ave (Suite 10 – 11) (5,252 SF): \$10.00/SF (Divisible)
Former State Beauty Supply - Formerly two suites that could easily be demised into two approx. 2,625 SF bays. Both spaces have open retail in the front and storage in the rear, each with one restroom

125 S. Mattis Ave (Suite 14B/14 Front) (14,200 SF to 43,962 SF): \$6.00/SF (Divisible)
Former Ant's in Your Pants – Former children's entertainment venue. This space is located in the 'L' of the building and has wide open retail space with large bay windows, approx. 14' clear, and restrooms against the northeast corner of the space.

121 S. Mattis Ave (Suite 17) (1,200 SF): \$10.00/SF
Former Nail Salon that has some buildout including plumbing near the front of the space and an office/room in the rear.

117 S. Mattis Ave. (Suite 18A) (1,150 SF): \$10.00/SF
Former Hair Cut Store that is open in the front and has an office in the rear. Some of the additional plumbing remains.

115 S. Mattis Ave. (Suite 19) (4,200 SF): \$8.00/SF
Former Restaurant that will be gutted in the upcoming months and will allow for wide open retail or a new custom buildout.

2206 W. Springfield Ave. (Suite 28D) (2,220 SF): \$8.00/SF
This space is open garage space featuring 4 overhead doors on the west side and 2 on the south (one would need to be a front door.) The storage space is roughly 30' x 73' and has a restroom in the rear.

1912 W. Springfield Ave. (Suite 25) (2,040 SF): \$10.00/SF
Former First Federal Bank that has 3 drive through lanes, vault, and a walk-up window. Space could be gutted and used as office or retail.

230 Country Fair Dr. (Suite O-1/A1) (5,470 SF): \$8.00/SF
Former Wild Birds and More is set up more as an open office space with several large rooms and an overhead garage door.

OVERVIEW

Address	Varies
Lease Price	\$6.00 - \$10.00/SF NNN
Available Space	930 – 43,962 SF
Building Size	304,588 SF
Land Size:	33 Acres
Zoning	CG- Commercial General
Estimated NNN:	\$1.63/SF-2021



Country Fair Shopping Center



PROPERTY HIGHLIGHTS

- High Visibility and Traffic Counts
- Central Location
- Great Interstate Access
- Large Parking Lot (2,000 Spaces)
- Variety of Unit Sizes to Choose From
- On-Site Maintenance

LOCATION DISCRPTION

Country Fair Shopping Center host over 300,000 SF of retail space (2,000 Parking spots) on a prime 33 Acre site in West Champaign at the Northwest Corner of Springfield Ave. (IL Rt. 10) and Mattis Ave. This corner boasts traffic counts of 14,600 VPD on Springfield and 23,000 VPD on Mattis which are among the highest in Champaign-Urbana. The immediate area is dominated with retail on all four corners including Round Barn Shopping Center (160,200 SF), Union Square (11,538 SF), and Walgreens on southeast corner. Area retailers include: Ruler Foods, Big Lots, Walgreens, CVS, Chase Bank, Starbucks, OSF Urgo, Jimmy Johns, Dollar Tree, Dollar General, Dunkin Donuts, Jimmy John's, Arby's, Taco Bell, OHOP, Kinkos, and many more local, regional, and national retailers.

DEMOGRAPHICS

POPULATION	3-MILES	5-MILES	10-MILES
2010 Population (Census)	90,403	132,648	164,389
2021 Population	95,960	140,453	174,587
2026 Population (Projected)	99,433	145,061	180,766
HOUSHOLDS	3-MILES	5-MILES	10-MILES
2010 Households (Census)	36,286	53,879	66,372
2021 Households	39,075	57,743	71,343
2026 Households (Projected)	40,751	60,000	74,263
INCOME	3-MILES	5-MILES	10-MILES
2021 Median HH Income	\$49,740	\$51,431	\$56,087
2021 Avg. HH Income	\$76,418	\$80,709	\$86,098
2021 Per Capita Income	\$31,724	\$33,610	\$35,591

Country Fair Shopping Center



**COLDWELL
BANKER
COMMERCIAL**

DEVONSHIRE REALTY



Country Fair Shopping Center



**COLDWELL
BANKER
COMMERCIAL**

DEVONSHIRE REALTY



Country Fair Shopping Center



**COLDWELL
BANKER
COMMERCIAL**

DEVONSHIRE REALTY



W. SPRINGFIELD AVENUE

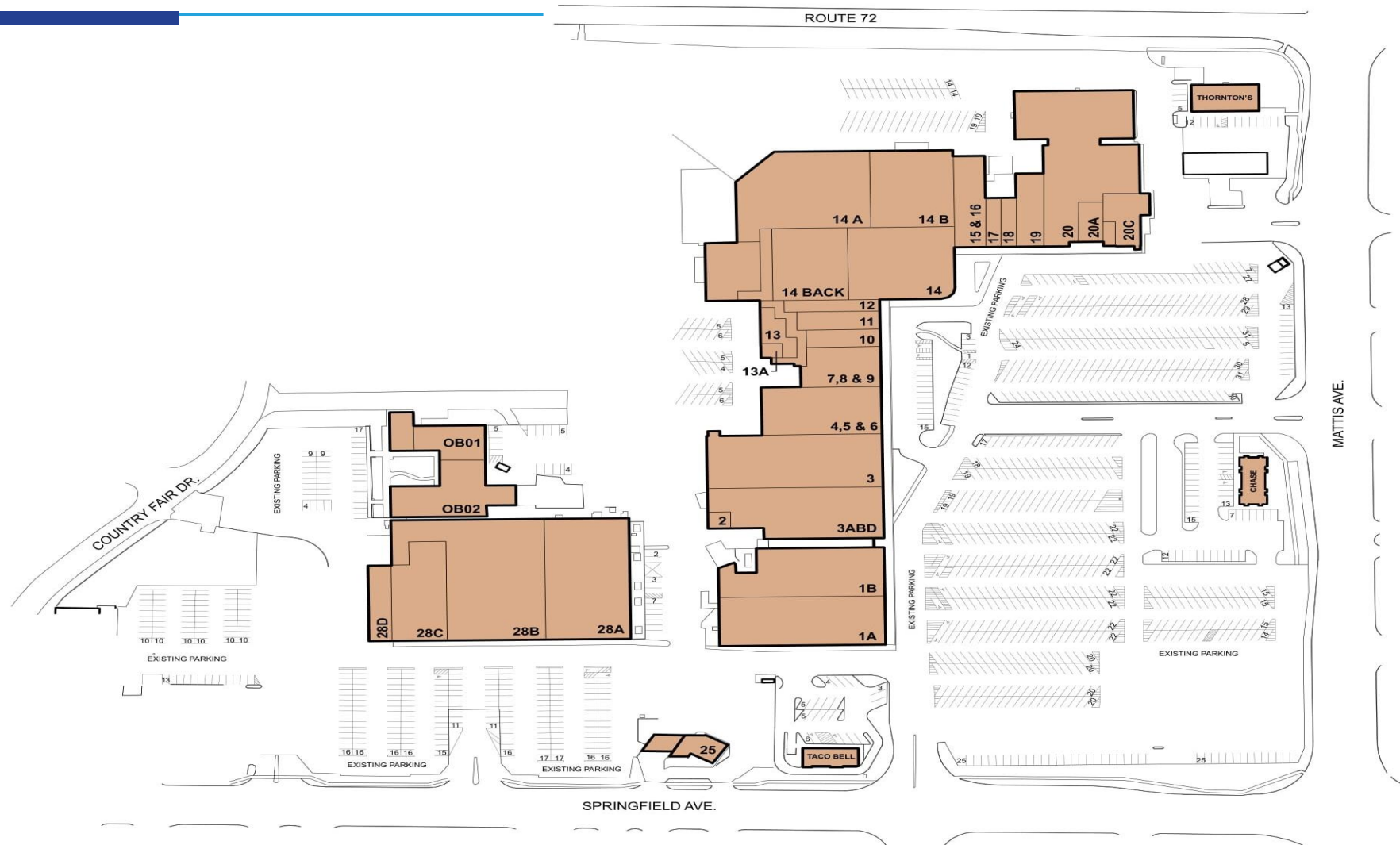
S. MATTIS AVENUE

Country Fair Shopping Center



DEVONSHIRE REALTY

SITE PLAN



COUNTRY FAIR SHOPPING CENTER

CHAMPAIGN, IL



Country Fair Shopping Center

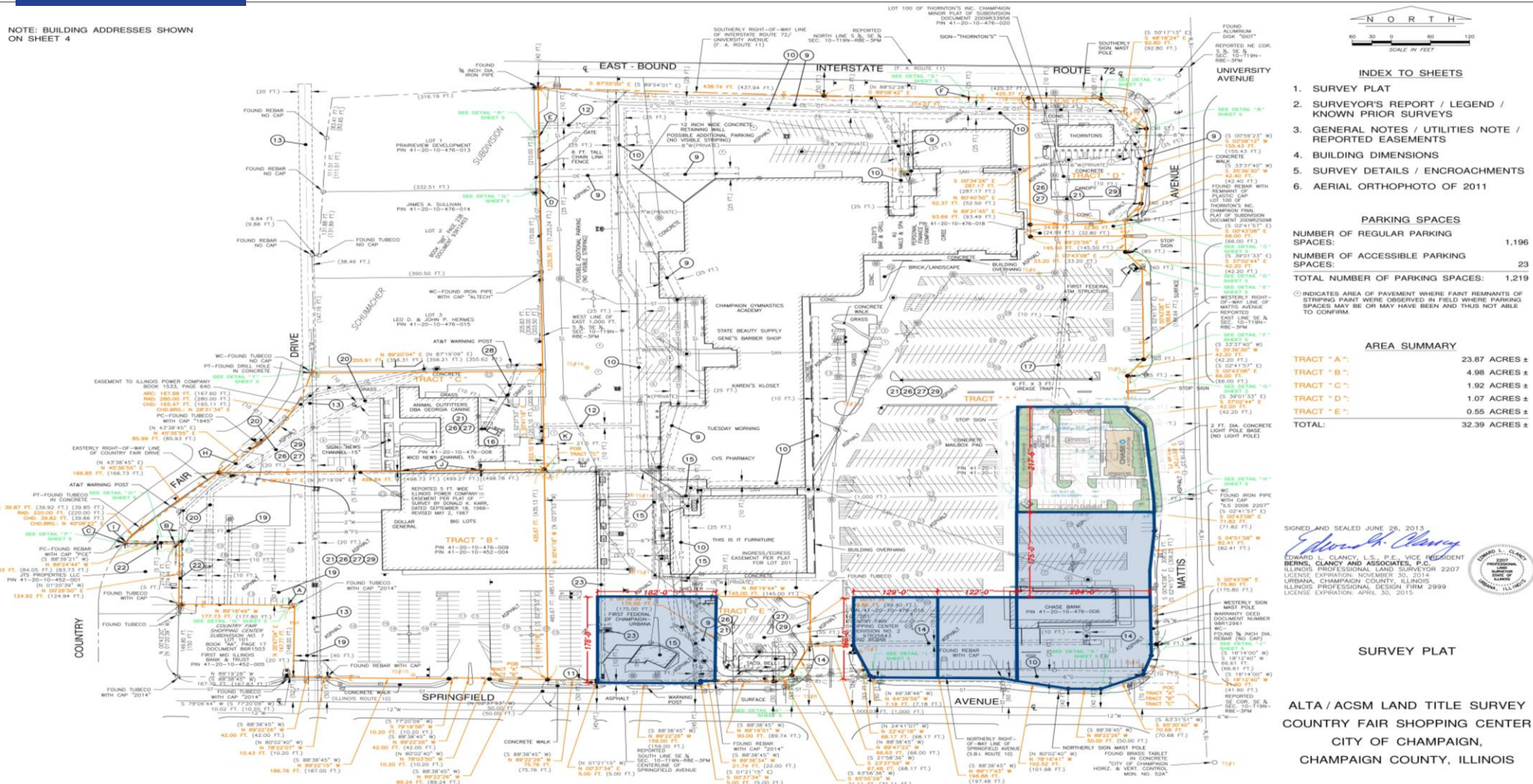


**COLDWELL
BANKER
COMMERCIAL**

DEVONSHIRE REALTY

POTENTIAL OUTLOTS

NOTE: BUILDING ADDRESSES SHOWN
ON SHEET 4



- INDEX TO SHEETS**
1. SURVEY PLAT
 2. SURVEYOR'S REPORT / LEGEND
KNOWN PRIOR SURVEYS
 3. GENERAL NOTES / UTILITIES NOTE /
REPORTED EASEMENTS
 4. BUILDING DIMENSIONS
 5. SURVEY DETAILS / ENCROACHMENTS
 6. AERIAL ORTHOPHOTO OF 2011

PARKING SPACES

NUMBER OF REGULAR PARKING SPACES: 1,196

NUMBER OF ACCESSIBLE PARKING SPACES: 23

TOTAL NUMBER OF PARKING SPACES: 1,219

① INDICATES AREA OF PAVEMENT WHERE FAINT REMNANTS OF STRIPING PAINT WERE OBSERVED IN FIELD WHERE PARKING SPACES MAY BE OR MAY HAVE BEEN AND THUS NOT ABLE TO CONFIRM.

AREA SUMMARY

TRACT "A"	23.87 ACRES ±
TRACT "B"	4.98 ACRES ±
TRACT "C"	1.92 ACRES ±
TRACT "D"	1.07 ACRES ±
TRACT "E"	0.55 ACRES ±
TOTAL:	32.39 ACRES ±

SIGNED AND SEALED JUNE 26, 2013

Edward L. Clancy
EDWARD L. CLANCY, L.S., P.E., VICE PRESIDENT
BERNS, CLANCY AND ASSOCIATES, P.C.
ILLINOIS PROFESSIONAL LAND SURVEYOR 2207
LICENSE EXPIRATION: NOVEMBER 30, 2014
URBANA, CHAMPAIGN COUNTY, ILLINOIS
LICENSE EXPIRATION: APRIL 30, 2015

SURVEY PLAT

ALTA / ACSM LAND TITLE SURVEY
COUNTRY FAIR SHOPPING CENTER
CITY OF CHAMPAIGN,
CHAMPAIGN COUNTY, ILLINOIS

BERNS, CLANCY AND ASSOCIATES
ENGINEERS • SURVEYORS • PLANNERS
405 EAST MAIN STREET • POST OFFICE BOX 755
URBANA, ILLINOIS 61802-0755
PHONE: (217) 364-1144 FAX: (217) 364-3395



JOB: 6748
FILE: 6748.DWG
DATE: 06/26/13
SHEET: 1 OF 6

J.U.L.I.E.
NOTE: THE EXACT LOCATION OF ALL UTILITIES
SHALL BE VERIFIED BY THE CONTRACTOR PRIOR TO
CONSTRUCTION ACTIVITIES. FOR UTILITY LOCATIONS
CALL: 800.882.8133

OUTLOT 100



OUTLOT 100



Country Fair Shopping Center



CONTACT INFORMATION



DEVONSHIRE REALTY

AJ Thoma III, CCIM, SIOR
Vice President,
Commercial Brokerage
217-403-3425
ajt@cbcdr.com

Zach Wetherell, CCIM
Vice President,
Commercial Brokerage
217-403-3374
zw@cbcdr.com

Coldwell Banker Commercial
Devonshire Realty
201 W. Springfield Ave. | 11th Floor
Champaign, IL 61820
217.352.7712

