



**COLDWELL BANKER
COMMERCIAL**
DEVONSHIRE
REALTY

NORTH PROSPECT LAND FOR SALE

Sale Price: \$240,000



FOR SALE

920 W. Anthony Drive

Champaign, IL 61821

0.93 AC

LAND

RETAIL

SALE PRICE

\$240,000 (Previously \$295,000)

LOT SIZE ACRE

0.93 AC

TAX PIN

41-20-02-276-014

ZONING

CG

RE TAXES

\$9,648.96

YEAR BUILT

2019

PROPERTY DESCRIPTION

This is a highly visible premium retail lot, ready to build, located in the most desirable commercial/retail neighborhood in Champaign County.

AREA DESCRIPTION

Conveniently located just west of North Prospect Retail Corridor and I-74 interchange, this 0.93 acre site is highly visible. The subject property is located close to numerous restaurants and hotels. Nearby retailers include: Rural King, DaVita Dialysis, Goodwill, Chipotle, Sam's Club and many more. From I-72 interchange Prospect Ave., travel North to W Marketview Dr., left/west on Marketview Dr., and left/south on Anthony Dr.

Traffic Counts

W. Anthony Drive – 5,400 AADT

N. Prospect Ave – 27,300 AADT



DENISE BEAN-MATHIS

217-377-1944

tmathis@cbcdr.com

cbcdr.com



**COLDWELL BANKER COMMERCIAL
DEVONSHIRE REALTY**

201 W Springfield Ave. 11th Floor
Champaign, IL 61820
217-352-7712

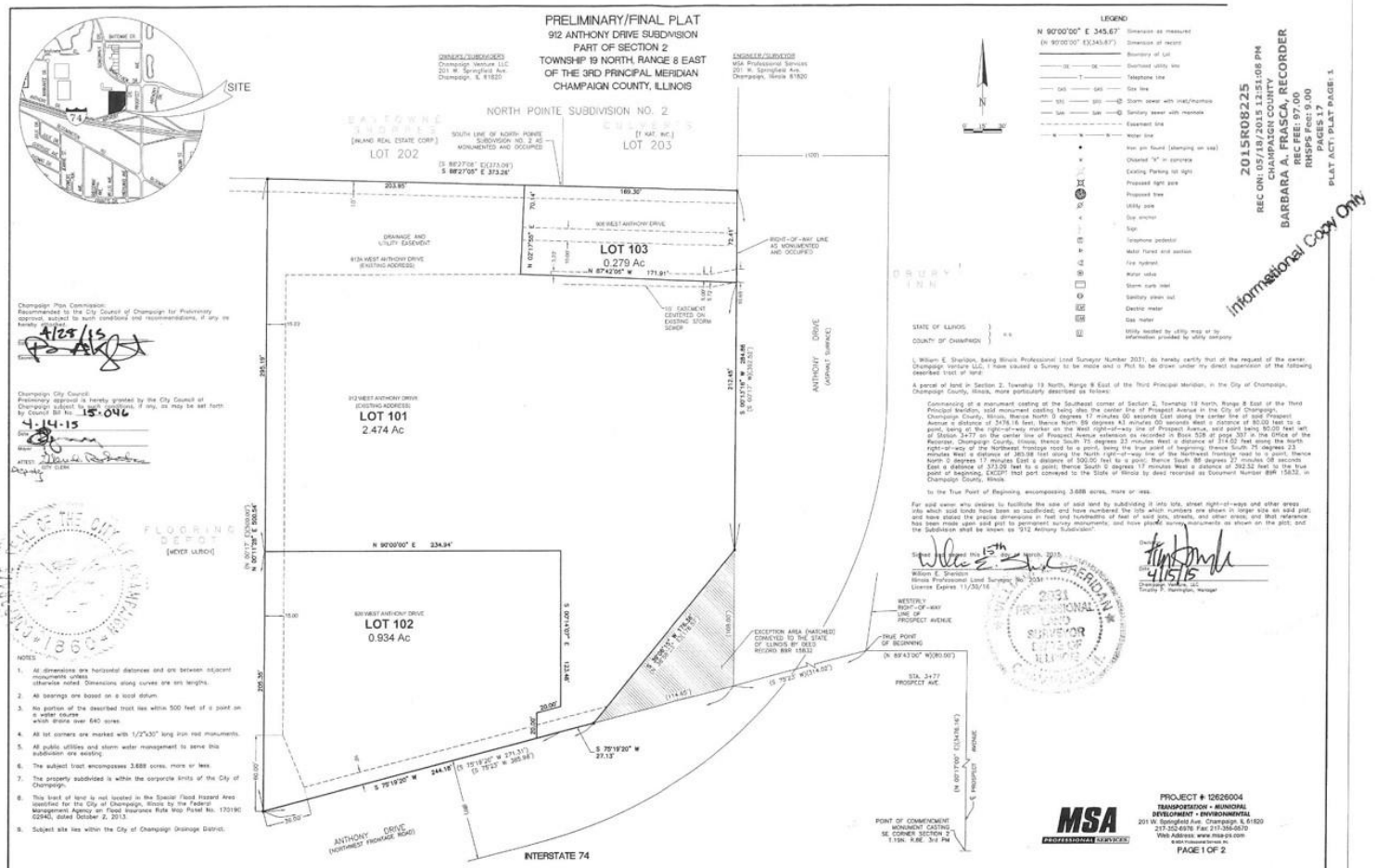
©2022 Coldwell Banker. All Rights Reserved. Coldwell Banker and the Coldwell Banker logos are trademarks of Coldwell Banker Real Estate LLC. The Coldwell Banker® System is comprised of company owned offices which are owned by a subsidiary of Realogy Brokerage Group LLC and franchised offices which are independently owned and operated. The Coldwell Banker System fully supports the principles of the Fair Housing Act and the Equal Opportunity Act. Each sales representative and broker is responsible for complying with any consumer disclosure laws or regulations. Any services or products provided by independently owned and operated franchisees are not provided by, affiliated with or related to Coldwell Banker Real Estate LLC nor any of its affiliated companies. 2288KS_NAT_2/22



Sale Price: \$240,000

FOR SALE

PLAT MAP



DENISE BEAN-MATHIS
217-377-1944
tmathis@cbcdr.com
cbcdr.com



201 W Springfield Ave. 11th Floor
Champaign, IL 61820
217-352-7712

©2022 Coldwell Banker. All Rights Reserved. Coldwell Banker and the Coldwell Banker logos are trademarks of Coldwell Banker Real Estate LLC. The Coldwell Banker® System is comprised of company owned offices which are owned by a subsidiary of Realogy Brokerage Group LLC and franchised offices which are independently owned and operated. The Coldwell Banker System fully supports the principles of the Fair Housing Act and the Equal Opportunity Act. Each sales representative and broker is responsible for complying with any consumer disclosure laws or regulations. Any services or products provided by independently owned and operated franchisees are not provided by, affiliated with or related to Coldwell Banker Real Estate LLC nor any of its affiliated companies. 2288KS NAT 2/22



**COLDWELL BANKER
COMMERCIAL**
DEVONSHIRE
REALTY

NORTH PROSPECT LAND FOR SALE

Sale Price: \$240,000

FOR SALE

DEMOGRAPHICS

Demographics	1 Mile	3 Mile	5 Mile
Population	10,902	80,908	137,382
# of Households	4,434	32,597	55,619
Average Age	34.3	31.2	34.2
Average HH Income	\$59,072	\$62,951	\$75,455



DENISE BEAN-MATHIS

217-377-1944

tmathis@cbcdr.com

cbcdr.com



**COLDWELL BANKER COMMERCIAL
DEVONSHIRE REALTY**

201 W Springfield Ave. 11th Floor
Champaign, IL 61820
217-352-7712

©2022 Coldwell Banker. All Rights Reserved. Coldwell Banker and the Coldwell Banker logos are trademarks of Coldwell Banker Real Estate LLC. The Coldwell Banker® System is comprised of company owned offices which are owned by a subsidiary of Realogy Brokerage Group LLC and franchised offices which are independently owned and operated. The Coldwell Banker System fully supports the principles of the Fair Housing Act and the Equal Opportunity Act. Each sales representative and broker is responsible for complying with any consumer disclosure laws or regulations. Any services or products provided by independently owned and operated franchisees are not provided by, affiliated with or related to Coldwell Banker Real Estate LLC nor any of its affiliated companies. 2288K5_NAT_2/22



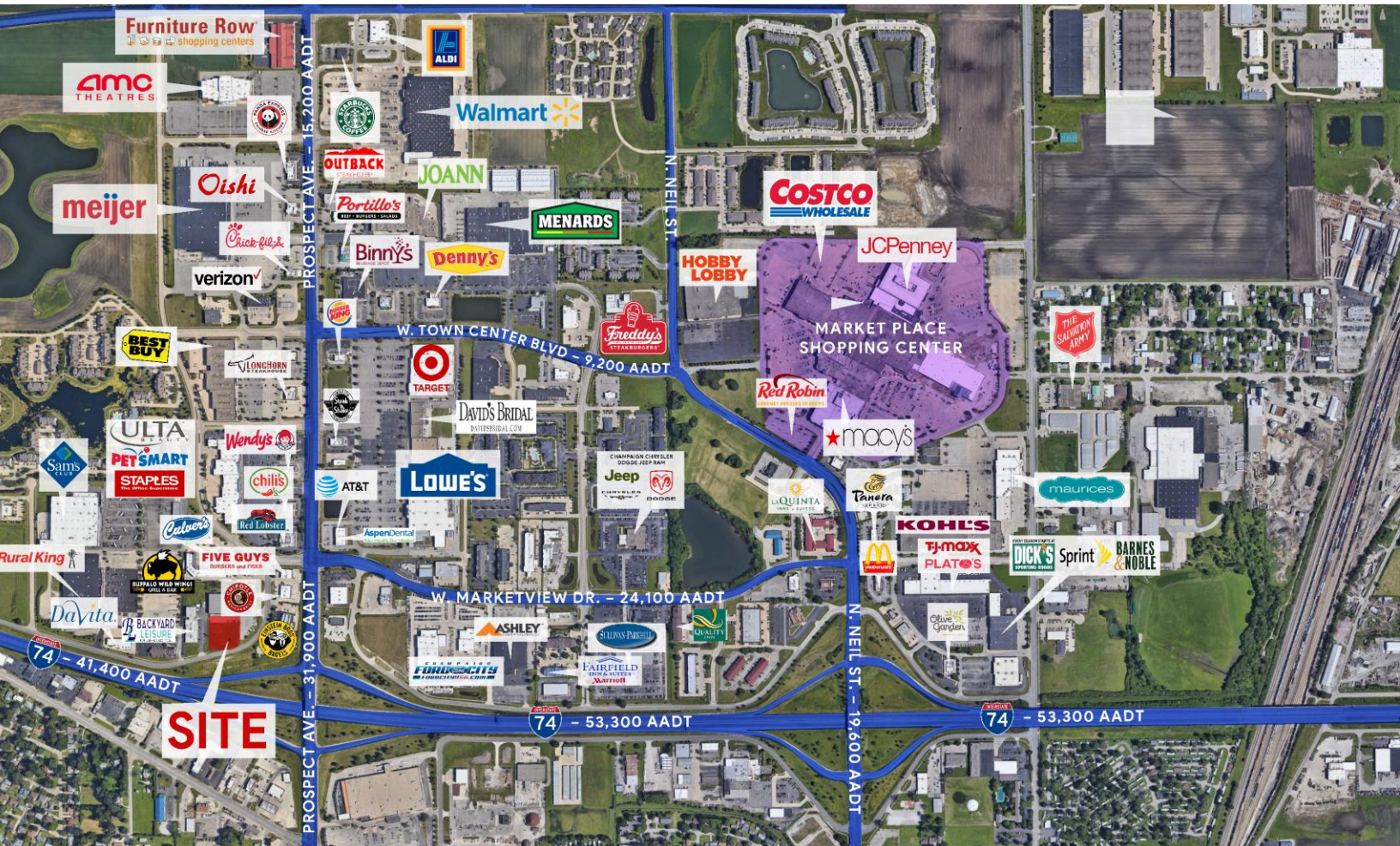
**COLDWELL BANKER
COMMERCIAL**
DEVONSHIRE
REALTY

NORTH PROSPECT LAND FOR SALE

Sale Price: \$240,000

FOR SALE

AERIAL



DENISE BEAN-MATHIS

217-377-1944

tmathis@cbcdr.com

cbcdr.com



**COLDWELL BANKER COMMERCIAL
DEVONSHIRE REALTY**

201 W Springfield Ave. 11th Floor
Champaign, IL 61820
217-352-7712

©2022 Coldwell Banker. All Rights Reserved. Coldwell Banker and the Coldwell Banker logos are trademarks of Coldwell Banker Real Estate LLC. The Coldwell Banker® System is comprised of company owned offices which are owned by a subsidiary of Realty Brokerage Group LLC and franchised offices which are independently owned and operated. The Coldwell Banker System fully supports the principles of the Fair Housing Act and the Equal Opportunity Act. Each sales representative and broker is responsible for complying with any consumer disclosure laws or regulations. Any services or products provided by independently owned and operated franchisees are not provided by, affiliated with or related to Coldwell Banker Real Estate LLC nor any of its affiliated companies. 2288K5_NAT_2/22