

	EXISTING WALL TO REMAIN
	NEW PARTITION
	PARTITION EXTENDS TO DECK
	WATER HEATER, SEE PLUMB DWGS.
	FULLY RECESSED FIRE EXTINGUISHER CABINET.
	SEMI-RECESSED AED CABINET, SEE ACCESSORY SCHEDULE
	DOOR TAG
	NEW DOOR & FRAME
	EXISTING DOOR TO REMAIN.
	KEYNOTE
	FLOOR DRAIN, SEE PLUMBING DWGS.

- 1 ADA DOOR OPERATOR PUSH PAD (WALL MOUNTED) AT 3'-6" A.F.F., TYP. COORDINATE WITH ELEC. DWGS.
- 2 ADA DOOR OPERATOR PUSH PAD (MULLION MOUNTED) AT 3'-6" A.F.F., TYP. COORDINATE WITH GLAZED ASSEMBLIES & ELEC DWGS.
- 3 DRINKING WATER FOUNTAIN, SEE STANDARD MOUNTING HEIGHT DIAGRAM ON 7/G002. COORDINATE WITH PLUMB & ELEC DWGS.
- 4 PROVIDE & INSTALL CLOSED METAL SHELF SPECIMEN PASS-THROUGH.
- 5 FLOOR-MOUNTED-TOILET-PARTITION-MOUNTED-PER-MANUFACTURER'S-SPECIFICATION-
- 6 TV/MONITOR MOUNTED ON WALL WITH POWER & DATA BEHIND, MOUNTING HEIGHT 60" A.F.F. G.C. TO PROVIDE BLOCKING COORDINATE LOCATION WITH OWNER.
- 7 PROVIDE STUD STIFFENERS FOR OUT-OF-PLANE LOADING SUPPORT AT PARTIAL HEIGHT PARTITION. BASIS-OF-DESIGN: TSN MIDWALL 6" WIDE X 24" HIGH. SPACING AND ANCHORAGE PER MANUFACTURER'S WRITTEN RECOMMENDATIONS TO ACHIEVE RESISTANCE OF 200LBS CONCENTRATED LOADING AND SOLBS/SF LINEAR LOADING.
- 8 PROVIDE & INSTALL FIVE (5) WHITE WIRE ADJUSTABLE WALL SHELVES, RUBBERMAID, VENTILATED WIRE SHELVING, TIGHTMESH, 12" DEPTH, OR ARCHITECT APPROVED EQUAL. G.C. TO PROVIDE BLOCKING IN WALL. SHELVING TO EXTEND FULL WIDTH OF CLOSET/STORAGE. U.N.O.
- 9 PROVIDE ONE (1) WHITE WIRE WALL SHELF, 3'-0" LONG AND MOUNTED AT 3'-0" A.F.F. RUBBERMAID, VENTILATED WIRE SHELF, TIGHTMESH, 12" DEPTH, OR ARCHITECT APPROVED EQUAL. G.C. TO PROVIDE BLOCKING IN WALL. COORDINATE LOCATION WITH OSH IT.
- 10 G.C. TO PROVIDE F.R.T. PLYWOOD ON ALL WALLS TO ALLOW FOR INSTALLATION OF ACCESSORIES AND SHELVING PROVIDED AND INSTALLED BY ROZALADO. BLOCKING TO EXTEND FROM 4" A.F.F. TO 8" A.F.F..
- 11 PROVIDE 4'-0" TALL X 3/4" FRT PLYWOOD. LOCATE BOTTOM EDGE AT 30" A.F.F. ON ALL WALLS IN IT & ELEC ROOM, UNO. COORDINATE WITH ELEC DWGS.

- 12 INSTALL WALL PROTECTION FRP-1, 5'-0" HIGH, BEHIND & 2'-0" TO EACH SIDE OF MOP SINK. SEE FINISH SCHEDULE.
- 13 COUNTERTOP PRINTER, LOCATE POWER AND DATA WITHIN 6' OF CORNER ABOVE COUNTER.
- 14 NEW ALUMINUM STOREFRONT. SEE A512 FOR MORE INFORMATION.
- 15 (E) COLUMN. REMOVE EXISTING FINISHES, FRAME ENCLOSURE AS TIGHT AS POSSIBLE.
- 16 WHITEBOARD (36"X48")
- 17 WHITEBOARD (36"X72")
- 18 DATA (IT) RACK - 12"X 34" X 83" DATA RACK PROVIDED AND INSTALLED BY G.C.
- 19 WHEELCHAIR SCALE W/ RAMP, BY MCKESSON. REFER TO ELECTRICAL DRAWINGS FOR POWER AND DATE REQUIREMENTS.
- 20 INFILL EXISTING MASONRY OPENING. REFER TO TYPICAL INFILL DETAILS 11/A101
- 21 RX MACHINE- REFER TO ELECTRICAL DRAWINGS FOR POWER AND DATA REQUIREMENTS-
- 22 ACTIVE ALARM BOX
- 23 G.C. TO PROVIDE AND INSTALL TWO COAT RODS WITH SHELVES THE FULL WIDTH OF CLOSET AT 40" A.F.F. AND 60" A.F.F. EQUAL OR SIMILAR TO RUBBERMAID, VENTILATED WIRE SHELF, TIGHTMESH, 12" DEPTH WITH COAT ROD CLOSET SYSTEM.
- 24 RELOCATE (E) BLADE SIGN BRACKET

1. REFER TO G000 FOR GENERAL NOTES, ABBREVIATIONS AND SYMBOLS.
2. CONTRACTOR TO VERIFY ALL EXISTING CONDITIONS AND NOTIFY ARCHITECT OF ANY DISCREPANCIES BEFORE BEGINNING OF THE WORK.
3. THE CONTRACTOR SHALL NOT CONSIDER FLOOR PLAN NOTES TO BE ALL INCLUSIVE. IT IS THE CONTRACTOR'S RESPONSIBILITY TO INSPECT AND ASSESS EACH AREA AND TO FULFILL THE INTENT OF THE WORK INDICATED BY ALL THE CONTRACT DOCUMENTS. REFER TO SPECIFICATION DIVISION 01 - GENERAL REQUIREMENTS.
4. ARCHITECTURAL DRAWINGS MUST BE READ IN CONJUNCTION WITH ALL OTHER DRAWINGS FOR THE PROJECT. ALL DISCREPANCIES BETWEEN DRAWINGS MUST BE BROUGHT TO THE ATTENTION OF THE ARCHITECT PRIOR TO PROCEEDING WITH THE WORK.
5. ALL DIMENSIONS ARE TO FINISH FACE OF PARTITION AND/OR CENTERLINE OF COLUMN GRID.
6. ALL INTERIOR DOORS ARE SET OFF 4" FROM ADJACENT PARTITION CORNER U.N.O. ALL EXAM/CONSULT ROOM DOORS ARE SET OFF 18" FROM ADJACENT PARTITION U.N.O.
7. PROVIDE APPROVED FIRESTOPPING AND DRAFTSTOPPING MATERIAL AT PENETRATIONS OF FIRE RATED PARTITIONS TO MAINTAIN SCHEDULED FIRE RESISTANCE RATING OF ASSEMBLIES.
8. PROVIDE ACOUSTICAL CAULKING TO CLOSE GAPS BETWEEN SERVICE OUTLETS (SWITCHES, RECEPTACLES, DATA, COAX) AND GYPSUM WALLBOARD.
9. PROVIDE AND INSTALL PLYWOOD BLOCKING FOR MILLWORK, CABINETS, FUTURE GRAB BARS, FIXTURES, HANDRAILS, RACKS, AND MOUNTED TOILET ACCESSORIES. AND THE INSTALLATION OF GRAB BARS AS PER MANUFACTURER'S RECOMMENDATIONS.
10. ALL PARTITION TYPES TO BE G3-UI-B U.N.O.
11. ALL INTERIOR CLOSET DOORS TO BE CENTERED IN CLOSET, U.N.O.

12. ALL FLOOR DRAINS TO BE CENTERED IN ROOM, WHERE INDICATED IN PLAN, U.N.O.
13. SEE G002 FOR TYPICAL DOOR LOCATIONS, U.N.O.
14. OBJECTS THAT APPEAR TO BE ALIGNED, SHALL BE ALIGNED.
15. ALL WALLS AND CEILINGS TO RECEIVE FINISH, U.N.O. SEE FINISH SCHEDULES FOR ADDITIONAL INFORMATION.
16. SEE CIVIL AND LANDSCAPE DRAWINGS FOR ADDITIONAL INFO ON SITE CONSTRUCTION.
17. TENANT DEMISING WALLS ARE TO EXTEND TO UNDERSIDE OF DECK.
18. REFER TO A530 FOR FIXTURE AND ACCESSORY MOUNTING HEIGHTS AND OTHER ADA REQUIREMENTS AT TOILET ROOMS.
19. COORDINATE APPLIED SURFACE MATERIAL WITH FINISHES. CRITICAL CLEAR DIMENSIONS NOTED ARE TO MATERIAL FINISH.
20. FINISH FOR ANY EXPOSED PLUMBING, ELECTRICAL, MECHANICAL, FIRE PROTECTION, AND OTHER BUILDING SYSTEM COMPONENTS TO BE COORDINATED WITH ARCHITECT.
21. PROVIDE ALL SIGNAGE (EXIT, PUBLIC ACCESS AREAS, ETC.) AS REQUIRED BY CODE, AND IN CONFIGURATION REQUIRED BY BOTH LIFE SAFETY AND ACCESSIBILITY CODES.
22. FLOORS WHICH ARE OVER 1/4" OUT OF LEVEL OVER 10' SHALL BE LEVELED WITH HYDRAULIC UNDERLAYMENT. CONTRACTOR SHALL VERIFY SCOPE PRIOR TO SUBMITTING BID AND INCLUDE ALLOWANCE FOR THIS WORK.
23. G.C. TO FINISH NEW SHELL SPACE TO "WARM BOX" CONDITION INCLUDING CLEAN AND CLEAR THE SPACE OF ANY DEBRIS, PROVIDE EMERGENCY LIGHTING AND HVAC PER MEP DRAWINGS.
24. REFER TO SHEET A510 FOR DOOR SCHEDULE.
25. PROVIDE ROUNDED COUNTERTOP CORNERS WITH 2" RADIUS. TYP. FOR ALL EXPOSED CORNERS.

SHEET LEGEND

N.T.S.  
ANNOTATED PLAN

20

KEYNOTES  
ANNOTATED PLAN

N.T.S.  
ANNOTATED PLAN

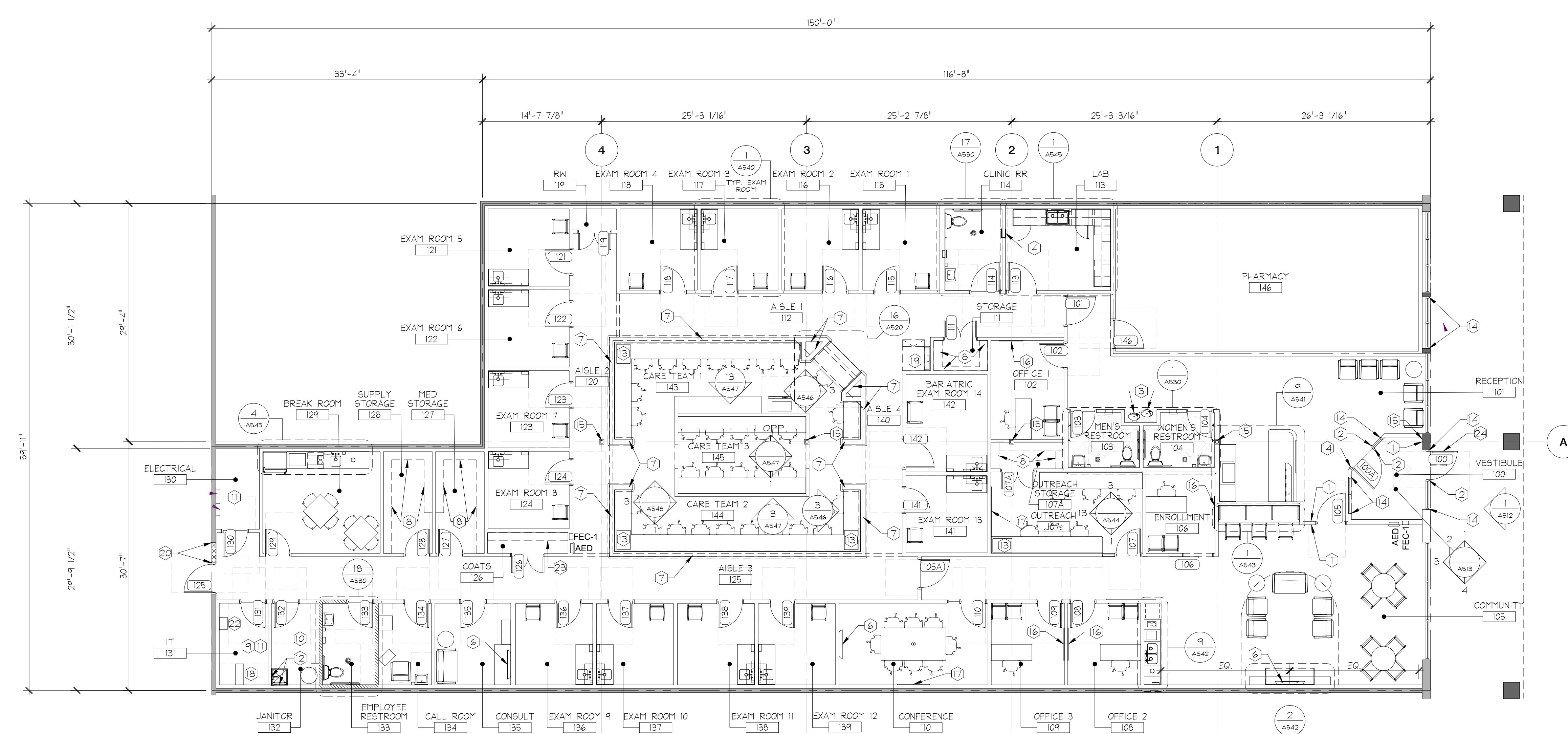
12

GENERAL NOTES  
BUILDING PLANS

N.T.S.  
ANNOTATED PLAN

4

NOTE: FURNITURE SHOWN FOR REFERENCE ONLY. FINAL FURNITURE LAYOUT BY FURNITURE VENDOR.



ANNOTATED FLOOR PLAN

1/8"-1'-0"  
ANNOTATED PLAN

1

Project  
**Oak St. Health**  
2345 MACARTHUR BLVD  
SPRINGFIELD, IL 62704

Architect  
**Moody Nolan**  
300 Spruce Street Phone: (614) 461-4664  
Suite 300 Fax: (614) 280-8881  
Columbus, Ohio 43215 www.moodynolan.com

Seal:  
  
RENAULD B. MITCHELL, LIC. #1019290  
EXP. DATE: 11/30/2024

Versions

No.	Date	Description

Sheet Title  
**ANNOTATED FLOOR PLAN**

Issue Date: 9/29/2023  
Drawn: SF Project No. 23017.08  
Sheet No.

A100