



# (DOT) Dynamic Speed Display Sign Policy

Effective Date: January 8, 2013

<b>Owner</b>	Board of Commissioners (BOC)
<b>Reviewer(s)</b>	DOT Director, County Attorney, County Manager
<b>Approver(s)</b>	DOT Director and BOC
<b>Related Policies</b>	N/A
<b>Related Standards</b>	N/A
<b>Storage Location</b>	Clerk's Office via Agenda Item
<b>Last Review Date</b>	7/26/2016
<b>Next Review Date</b>	N/A
<b>Review Cycle</b>	Document is updated as needed; no regular cycle established
<b>Employee Acknowledgement</b>	N/A

## 1. PURPOSE

The purpose of the Dynamic Speed Display Sign Policy is to establish guidelines and criteria for location identification and installation of dynamic speed display signs on two lane public roadways with classifications of Local, Minor Collector, and Major Collector roads, as defined by the County's Major Thoroughfare Plan. This policy also provides the process whereby citizens can request installation of these signs on affected streets. To qualify for the installation of DSDS, all requirements set forth in the Policy must be met.

## 2. SCOPE

This policy applies to all County agencies, elected offices, departments, full-time, part-time and non-employees (temporary employees, volunteers, service providers, vendors, contractors, and any other entities) that are seeking to install dynamic speed display signs on two lane public roadways with classifications of Local, Minor Collector, and Major Collector roads, as defined by the County's Major Thoroughfare Plan. If you have questions regarding this policy, contact the DOT Director.

## 3. GOVERNING LAWS, REGULATIONS & STANDARDS

<b>Guidance</b>	<b>Section</b>
Georgia Open Records Act	O.C.G.A. 50-18-70, et Seq.
Official Code of Cobb County	
Georgia Archives as adopted by County Code	<a href="https://www.georgiaarchives.org/records/retention_schedules">https://www.georgiaarchives.org/records/retention_schedules</a>
And all other applicable laws and regulations	

## 4. DEFINITIONS

**85<sup>th</sup> Percentile Speed** - An index of traffic speeds for a road segment used by transportation professionals for traffic analysis purposes. The 85<sup>th</sup> percentile speed is the speed at which 85 percent of the motorists are driving at or below.

**Affected Street(s)** - The actual street(s) proposed for dynamic speed display sign installation.

**ADT** - Stands for average daily traffic and is a unit of measure used by transportation professional for traffic volume analysis. Average daily traffic for purpose of this policy refers to the traffic in both directions on a particular street within a 24-hour time period.

**Board** - The Cobb County Board of Commissioners



# (DOT) Dynamic Speed Display Sign Policy

**CCDOT** - The Cobb County Department of Transportation

**DSDS** - Dynamic Speed Display Sign. Combination of a static speed limit sign and dynamic electronic speed display sign that flashes actual vehicle speeds as vehicles approach and pass person.

**Traffic Calming** - A term used by transportation professionals to refer to reducing traffic speeds.

## 5. POLICY

### REQUIREMENTS FOR STUDY

The following criteria must be met before a location can be studied for possible DSDS installation:

**Local, Minor Collector, or Major Collector Roadway** – CCDOT must confirm that the requested street is classified as a local, minor collector, or major collector roadway. In addition, the requested street must be a minimum of one (1) mile in length and the requested street must have only one (1) lane in the direction(s) for which the sign is requested.

If the requested street is a Local Roadway, the request must include documentation that the board member of the neighborhood HOA (or at least five (5) residents within the vicinity of the request if no HOA) have been contacted and support the installation of a DSDS.

Requested streets meeting the above criteria are added to the CCDOT list for study purposes.

### STUDY CRITERIA

The following requirements have been established in determining if streets qualify for possible installation of DSDS:

**Field Review** - at least 1000 feet must have grades 10 percent or less and no horizontal curves within at least 300 feet.

**Data Collection** - Traffic data will be collected from the requested street to determine the 85<sup>th</sup> percentile traffic speed and the ADT. The 85<sup>th</sup> percentile must be at least 10 mph over the posted speed limit AND one of the following must apply in order for a location to qualify for the installation of a DSDS:

- (A) **Collector Roadway, one-lane in both directions:** ADT is greater than 2,000 vehicles per day
- (B) **Collector Roadway, one-lane in one direction:** ADT is greater than 1,000 vehicles per day in that direction
- (C) **Local Roadway, one-lane in both directions:** ADT is greater than 1,000 vehicles per day
- (D) **Local Roadway, one-lane in one direction:** ADT is greater than 500 vehicles per day in that direction

## DYNAMIC SPEED DISPLAY SIGN EVALUATION PROCESS



# (DOT) Dynamic Speed Display Sign Policy

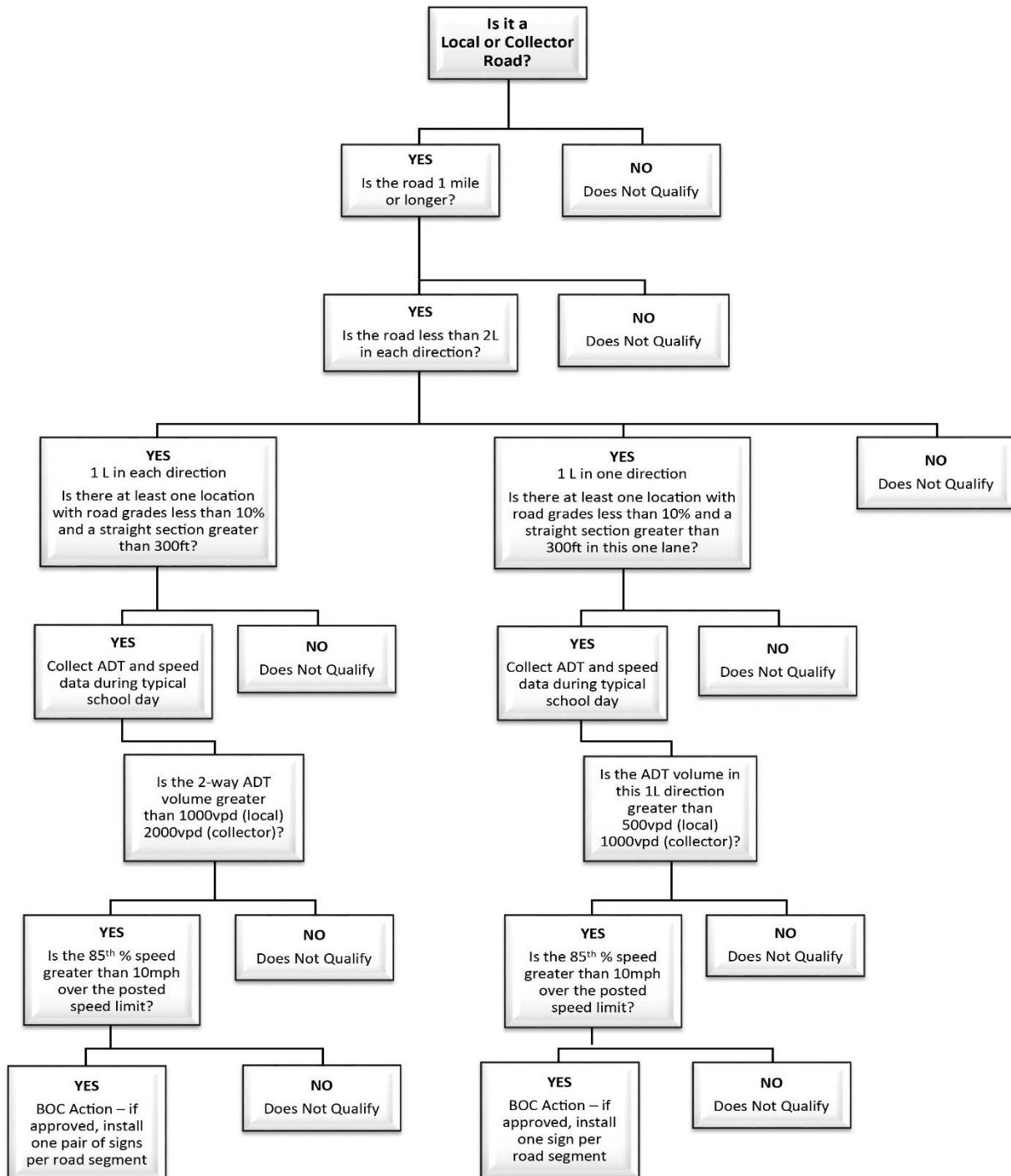


Figure 1



# (DOT) Dynamic Speed Display Sign Policy

## COMMISSION APPROVAL

If a requested street qualifies for installation of a DSDS, the request will be presented to the Cobb County Board of Commissioners for approval. DSDS will not be installed unless approval is granted by the Cobb County Board of Commissioners. Once approved, one DSDS will be installed per one-lane direction of the roadway request.

## DSDS DESIGN AND INSTALLATION STANDARDS

The design and installation requirements of DSDS are crucial factors in their effectiveness. Cobb County DSDS will be required to meet the following specifications. Many are guided by the *Manual on Uniform Traffic Control Devices*, which if revised would supersede the requirements below.

Vertical Install Height:	7 feet min from base of sign to top of roadway
Horizontal Install Distance:	5 - 12 feet from roadside
Placement Along Road:	In order to be effective, DSDS must be installed within a straight section of roadway greater than 300 feet and with roadway grades not exceeding 10%. Additionally, the location must provide sufficient sunlight for the DSDS solar panels to operate efficiently.

DSDS shall be funded by Cobb County. A maximum of ten (10) new installations each year will be permitted by the County. Installation of DSDS will be performed by County forces or contracted by the County. Installation of DSDS will not be considered final until CCDOT inspects the signs for compliance with design standards set forth in this Policy.

## REMOVAL/RELOCATION PROCESS

Once installed, DSDS must remain in place from a minimum of three (3) years. Upon receiving a request for removal or relocation of a sign, historical speed data from the sign should be collected and analyzed to support or deny removal or relocation. Cobb County Department of Transportation reserves the right to remove or relocate DSDS for any reason.

## 6. EXCEPTIONS

Exceptions to this policy must be justified and approved in advance. The County may deviate from the policy when written justification is provided to the BOC by the DOT Director.

## REVISION HISTORY

Version ID	Revision Date	Author	Reason for Revision
	7/26/2016	Traffic Operations Division Manager	To adopt the pilot program as policy.
v.1.0-2020	12/2020		Reformat