



**COBB & DOUGLAS  
PUBLIC HEALTH**

---

# COVID Status Update

February 15, 2021

*Healthier lives. Healthier community.*

# COVID-19 By County

Cases Testing Deaths

Last 2 weeks

February 15th

Estimated cases per 100,000 people last 14 days

200 400 600 800 >930

### Cobb County - February 15

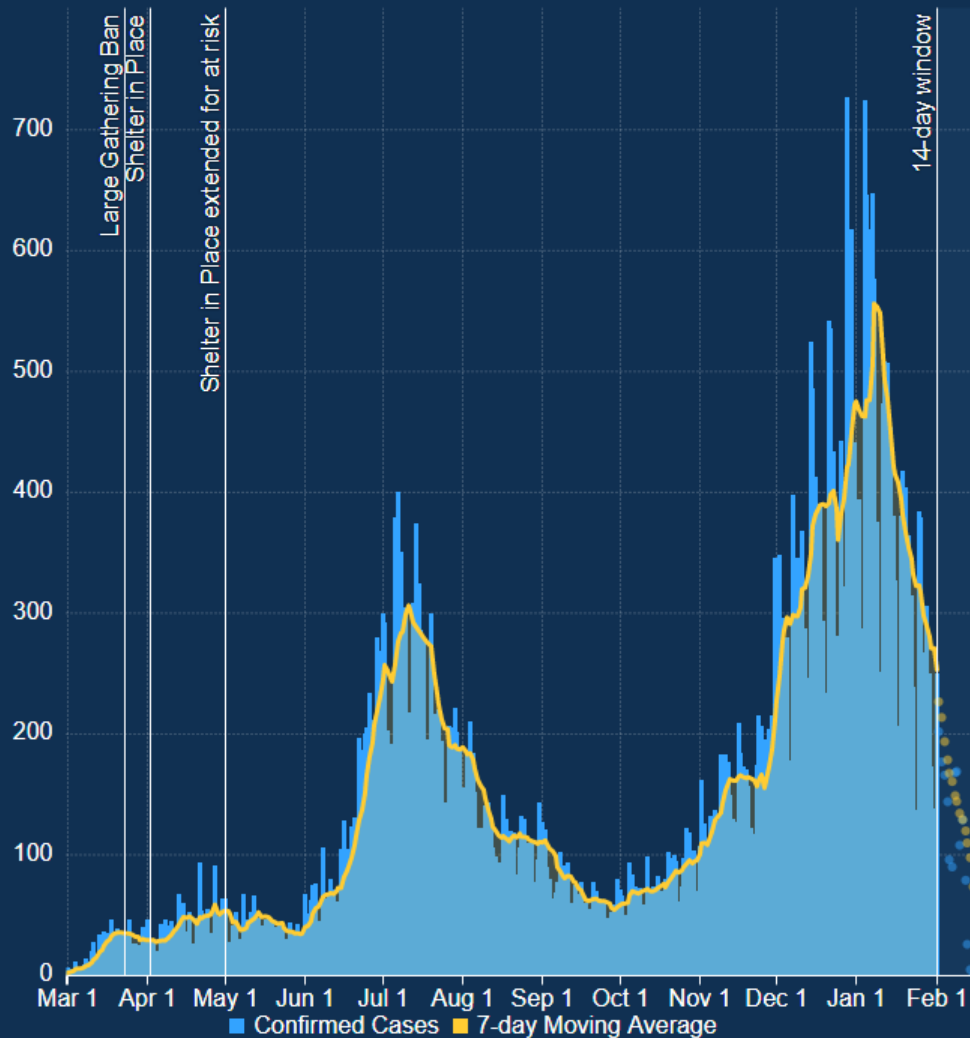
Cases (last 2 weeks): 2,620  
Cases per 100k (last 2 weeks): 331  
Cases (total): 53,666  
Cases per 100k (total): 6788  
Population: 790,588

# COVID-19 Over Time

Cases Cumulative Cases Deaths Total Tests Percent Positive

Cobb County

Date of Onset



Healthier lives. Healthier community.

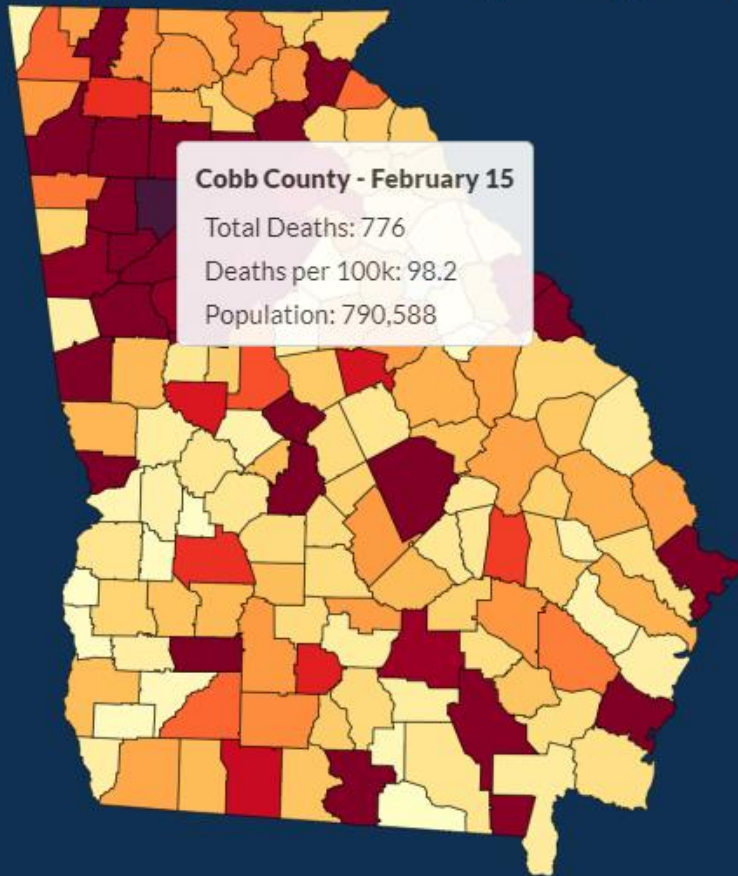
# COVID-19 By County

Cases Testing **Deaths**

Total Deaths

February 15th

Total deaths by county

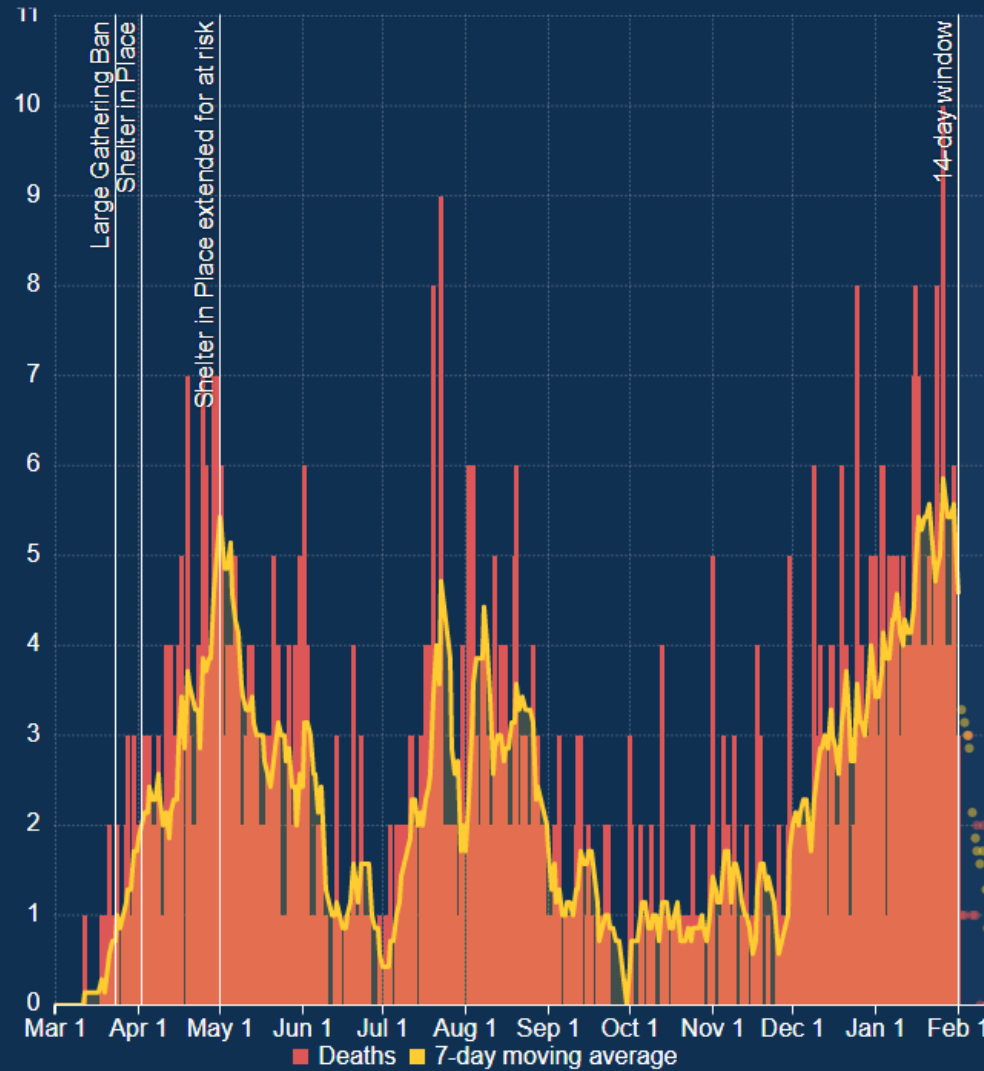


# COVID-19 Over Time

Cases Cumulative Cases **Deaths** Total Tests Percent Positive

Cobb County

Date of Death



Healthier lives. Healthier community.

# Stats

- Cases to date:
  - 53, 666 (PCR)
  - 13,260 (Antigens)
- 2-week case rate PCR 331/100,000
- Deaths 835 with confirmed and probable
- Seeing additional improvement in hospital admissions



# GA DPH Phase 1A+

## More Georgians to Become Eligible to Receive COVID-19 Vaccine

DECEMBER 30, 2020

### Vaccine Administration in Georgia

WE ARE IN PHASE

1A+

- Healthcare workers including nurses, physicians, EMS, laboratory technicians, environmental services
- Long-term care facilities (LTCF) staff and residents
- Adults 65+ and their caregivers
- Law enforcement, fire personnel (including volunteer fire departments), dispatchers, 9-1-1 operators

1B

- Essential workers (non-healthcare) who perform job tasks across critical infrastructure sectors, ensuring continuity of functions critical to public health, safety, economic and national security

1C

- Persons aged 16-64 with medical conditions that increase the risk for severe COVID-19

Equity Statement: In each population group, vaccine access will be prioritized geographically, based on vaccine accessibility, disease burden and risk associated with socio-economic status, race and ethnicity, and geographic location. Final populations are dependent on approved EUA guidance and ACIP vaccine eligibility recommendations (e.g., children and pregnant women).



# Vaccine Update

- 837 vaccines given today at Jim Miller Park
- 22,780 Vaccines total by CDPH
- 19,991 at JMP
- Jim Miller Park will be closed Tuesday Feb 16, due to inclement weather.
- Vaccine supplies remain limited from federal government
- Mostly 2<sup>nd</sup> doses with some first doses for outreach events

# Status

- Vaccine supply not thought to be increasing much until March-April
- Johnson and Johnson applied for Emergency Use Approval from FDA. FDA has scheduled meeting February 26 for review.

# Johnson and Johnson

- One dose vaccine
- DNA Vaccine to produce mRNA produce spike proteins
- Similar safety profile (fever), no anaphylaxis
- 72% effectiveness in the US
- At 28 days-no hospitalization or death.





*Healthier lives. Healthier community.*



Healthier lives

# CDC Guidelines Updates

However, vaccinated persons with an exposure to someone with suspected or confirmed COVID-19 are not required to quarantine if they meet all of the following criteria<sup>†</sup>:

- Are fully vaccinated (i.e.,  $\geq 2$  weeks following receipt of the second dose in a 2-dose series, or  $\geq 2$  weeks following receipt of one dose of a single-dose vaccine)
- Are within 3 months following receipt of the last dose in the series
- Have remained asymptomatic since the current COVID-19 exposure

Persons who do not meet all 3 of the above criteria should continue to follow current quarantine guidance after exposure to someone with suspected or confirmed COVID-19.

<https://www.cdc.gov/vaccines/covid-19/info-by-product/clinical-considerations.html>

**-Vaccinated persons should still watch for symptoms during quarantine**

**-Get tested if they develop symptoms.**

**-Continue to follow all other prevention guidance-Wear Masks, Maintain 6 feet, do not gather with groups of people, wash hands frequently.**

# Exception:

- **Vaccinated inpatients and residents in healthcare settings should continue to quarantine following an exposure** to someone with suspected or confirmed COVID-19; outpatients should be cared for using appropriate Transmission-Based Precautions.

<https://www.cdc.gov/vaccines/covid-19/info-by-product/clinical-considerations.html>

# Variant

- UK B 1.1.7. variant identified in the state
- Cobb and Douglas counties identified with multiple cases
- Thought to be roughly **50%** more contagious
- Possibly more deadly
- Doubling time in US thought to be about every 10 days
- Vaccines do seem to be effective

Due to a very generous donation from one of our COVID-19 partners, **Ipsium Diagnostics** to the **Cobb & Douglas Health Foundation**, we are able to provide thousands of food boxes to our families in need at our **CORE** testing sites

*Healthier lives. Healthier community.*

# FREE FOOD BOXES

TO ASSIST FAMILIES AND SENIORS IN NEED

**January 28 – March 20**  
10:00 AM – 2:00 PM or while supplies last

---

Thursdays - Woodie Fite Senior Center  
8750 Dorris Road  
Douglasville, GA 30134

---

Fridays - Kingdom Builders  
8271 Cedar Mountain Road  
Douglasville, GA 30134

---

Fridays - Legion Park  
5514 Austell Powder Springs Road SW  
Austell, GA 30106

---

Saturdays - Eastwood Baptist Church  
1150 Allgood Road NE  
Marietta, GA 30062

---

Food boxes of fresh items sponsored by



**COBB & DOUGLAS**  
HEALTH FOUNDATION

**CORE**  
Community Organized Relief Effort



# Takeaways...

- Hope for more vaccines on the horizon in the next few months
- Concerns for the variant strains in the state and community. Identified multiple cases of UK Strain in the district. More are being identified.
- Prevention must be adhered to:
  - Wearing masks
  - Physical distancing
  - Washing hands
  - Not gathering outside of households

**Thank you.**



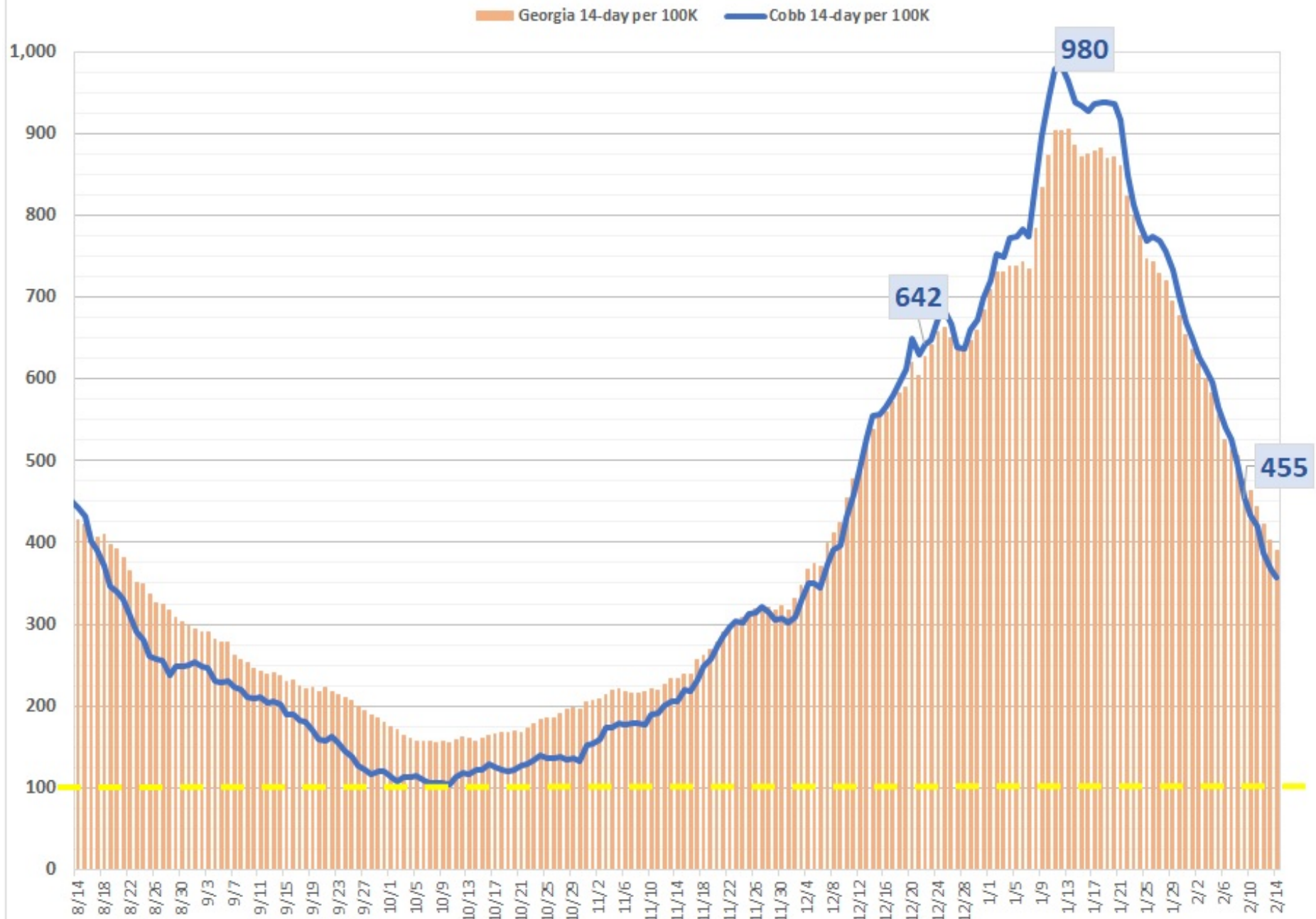
*Healthier lives. Healthier community.*





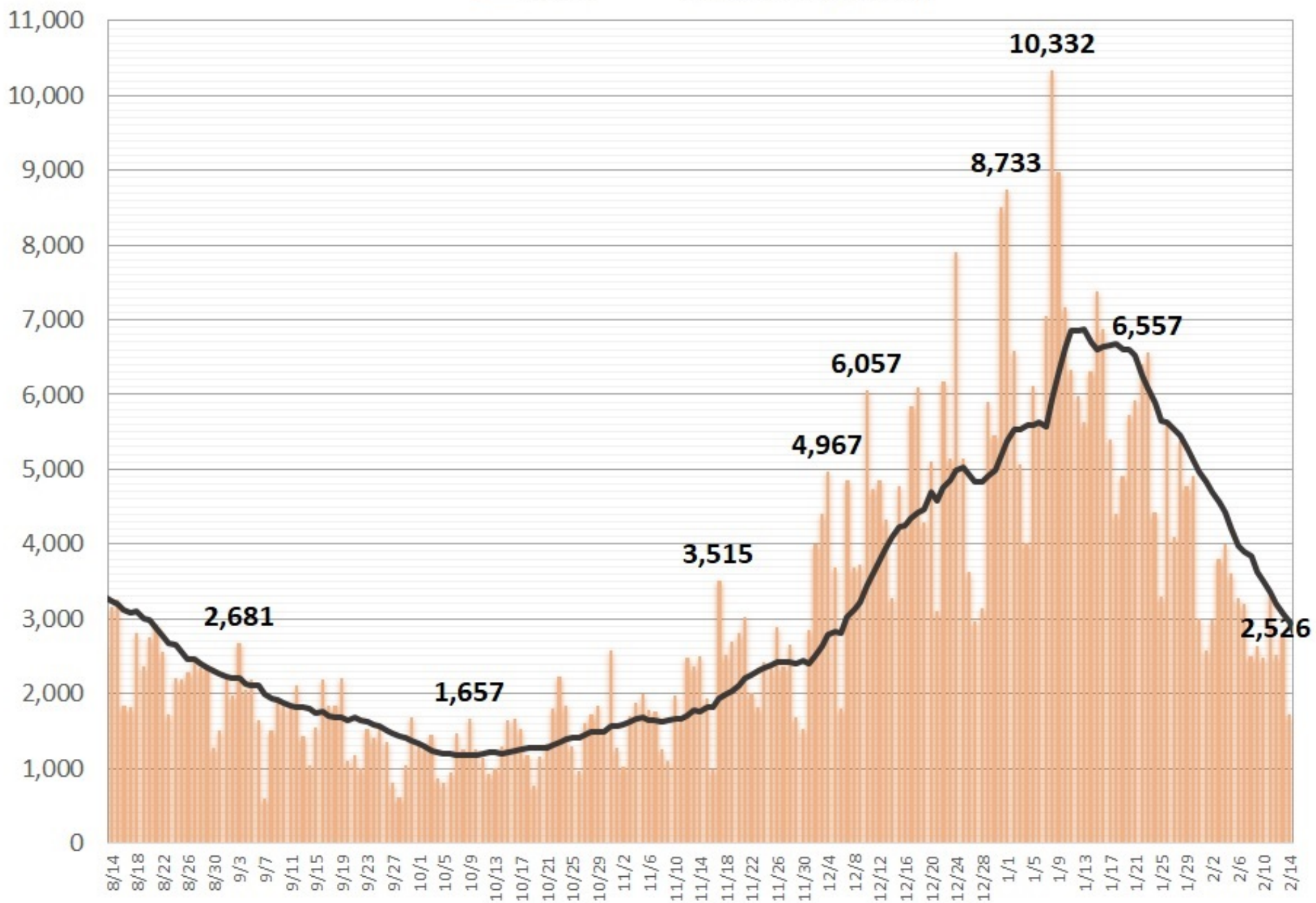
# 14 day (2 week) Rolling COVID-19 Case Average per 100K population

Values above yellow line are considered high spread (value >100)

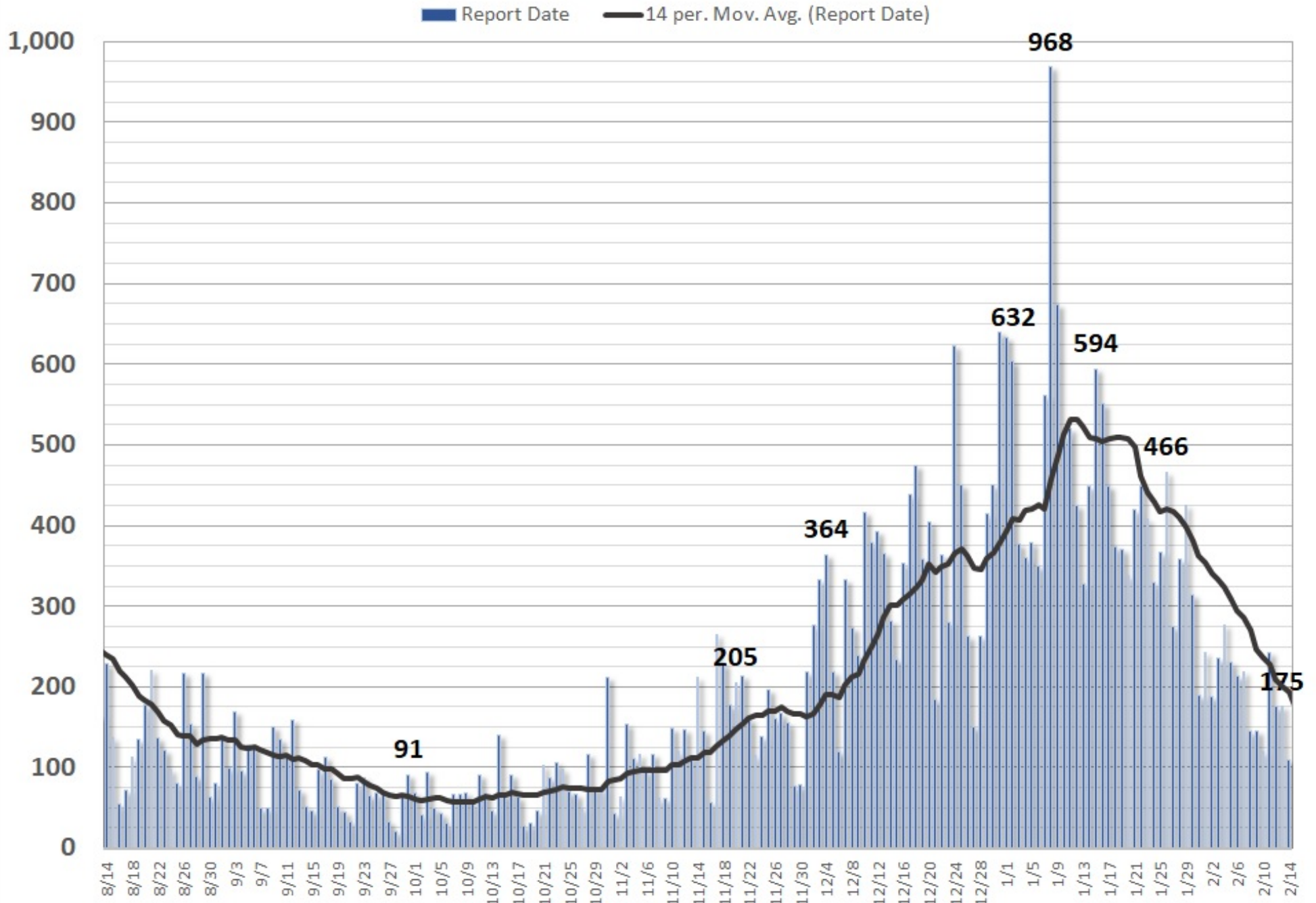


# GA Increase in Daily COVID-19 Confirmed Cases

Series1 14 per. Mov. Avg. (Series1)

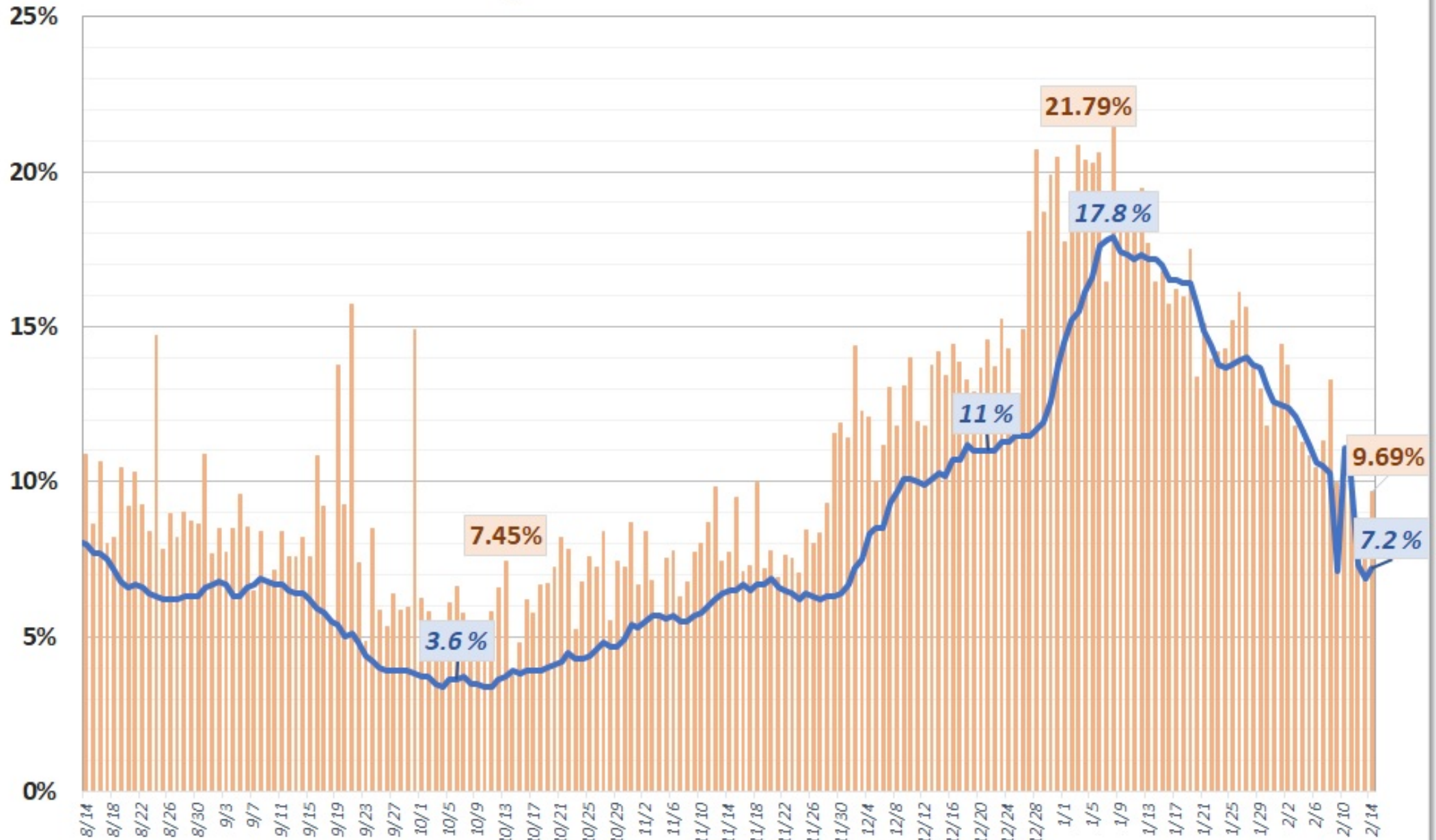


# Cobb Increase in Daily COVID-19 Confirmed Cases



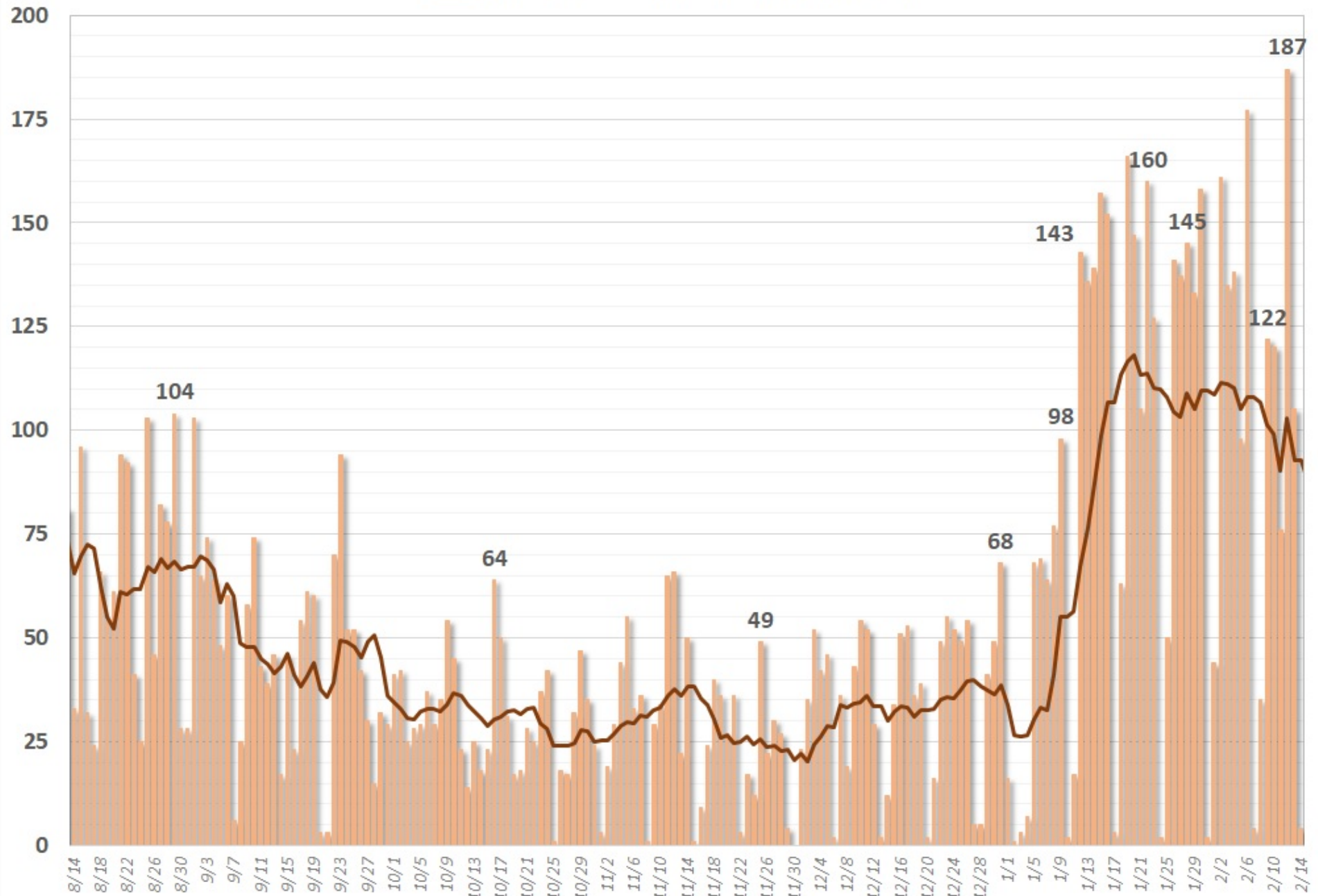
# Georgia and Cobb County: Daily % Positive, PCR COVID-19 Tests

Georgia % Positive Tests    Cobb % Positive Tests



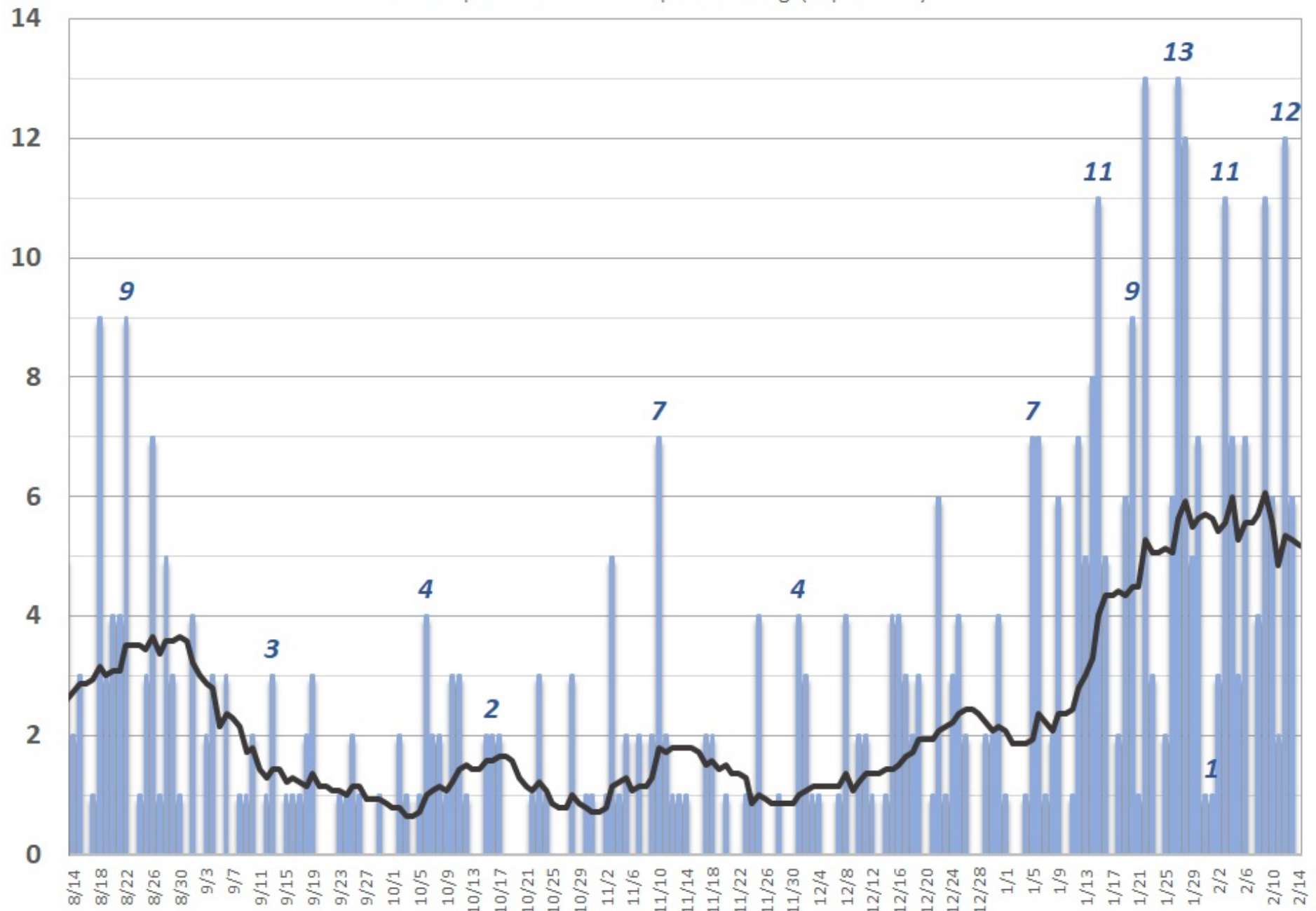
# GA Daily Increase in COVID-19 Related Deaths

Report Date      7 per. Mov. Avg. (Report Date)



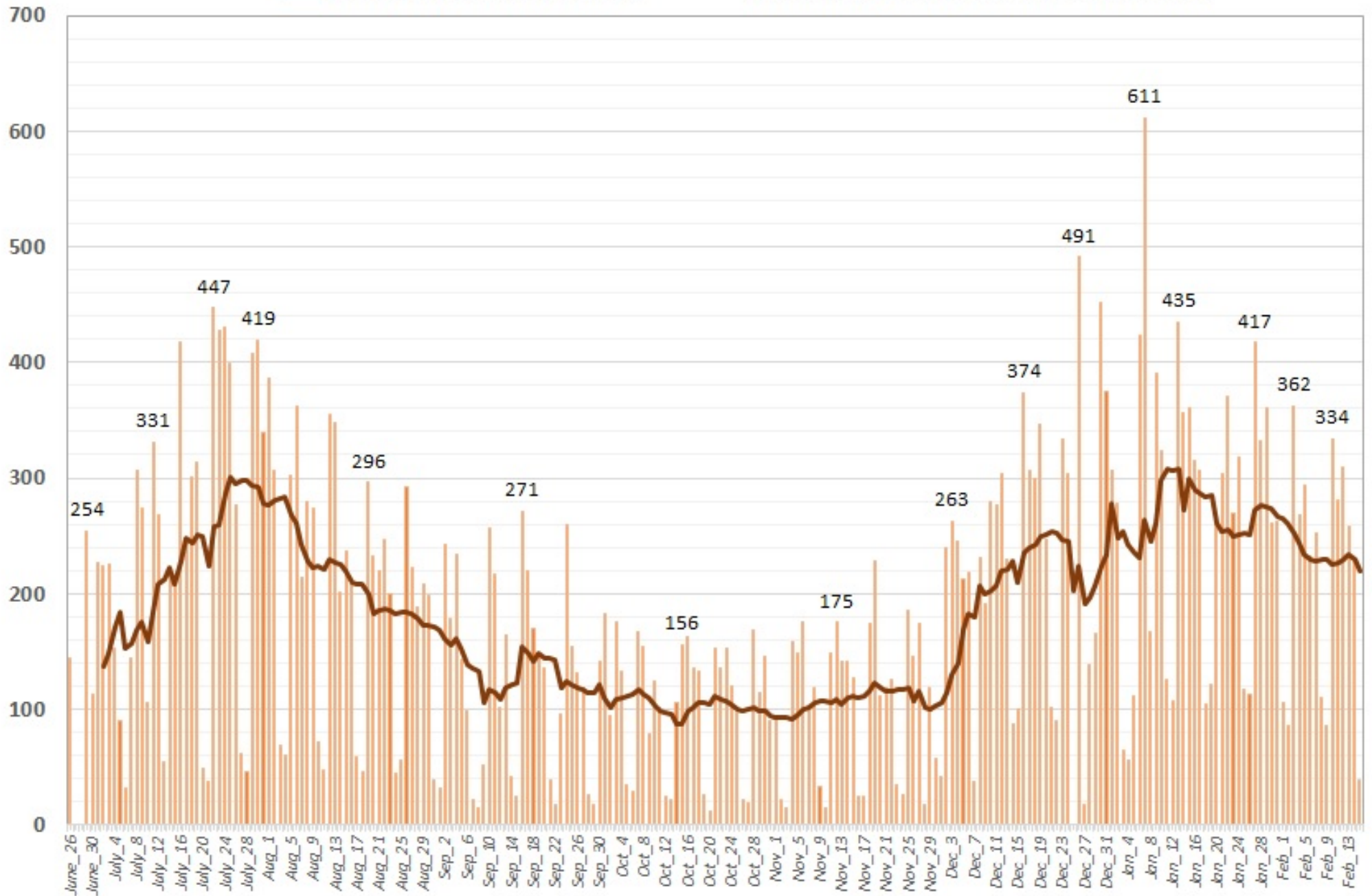
# Cobb Increase in Daily COVID-19 Confirmed Deaths (Report Date)

Report Date    14 per. Mov. Avg. (Report Date)



# Georgia Daily Increase in Hospitalizations Related to COVID-19

Georgia Daily New Hospitalizations      7 per. Mov. Avg. (Georgia Daily New Hospitalizations)



## Cobb Daily Increase in Hospitalizations Related to COVID-19

■ Cobb New Hospitalizations    
 — 7 per. Mov. Avg. (Cobb New Hospitalizations)

