

# COVID-19 ALERT!

Community transmission in both Cobb and Douglas Counties is once again considered HIGH and continues to increase. There have been steady increases in case rates, percent positive tests, emergency room visits and hospitalizations.

<b>HIGH</b>	≥100 cases per 100,000 county residents
<b>SUBSTANTIAL</b>	50-99.99 cases per 100,000 county residents
<b>MODERATE</b>	10-49.99 cases per 100,000 county residents
<b>LOW</b>	0-9.99 cases per 100,000 county residents

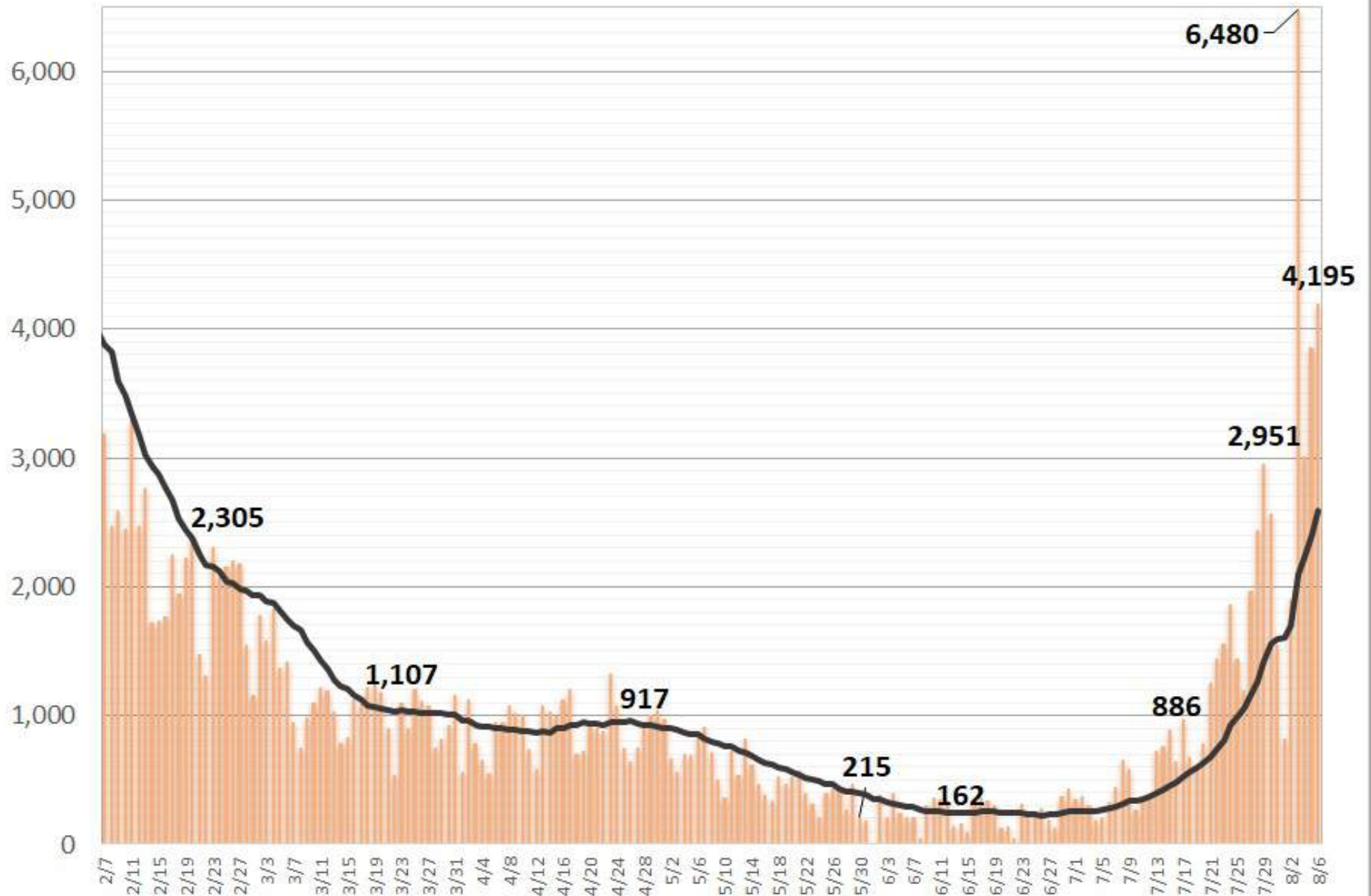
Current 14-day case rate per 100,000 by county:

**COBB: 399**

**DOUGLAS: 500**

# GA Increase in Daily COVID-19 Confirmed Cases

Series1 14 per. Mov. Avg. (Series1)

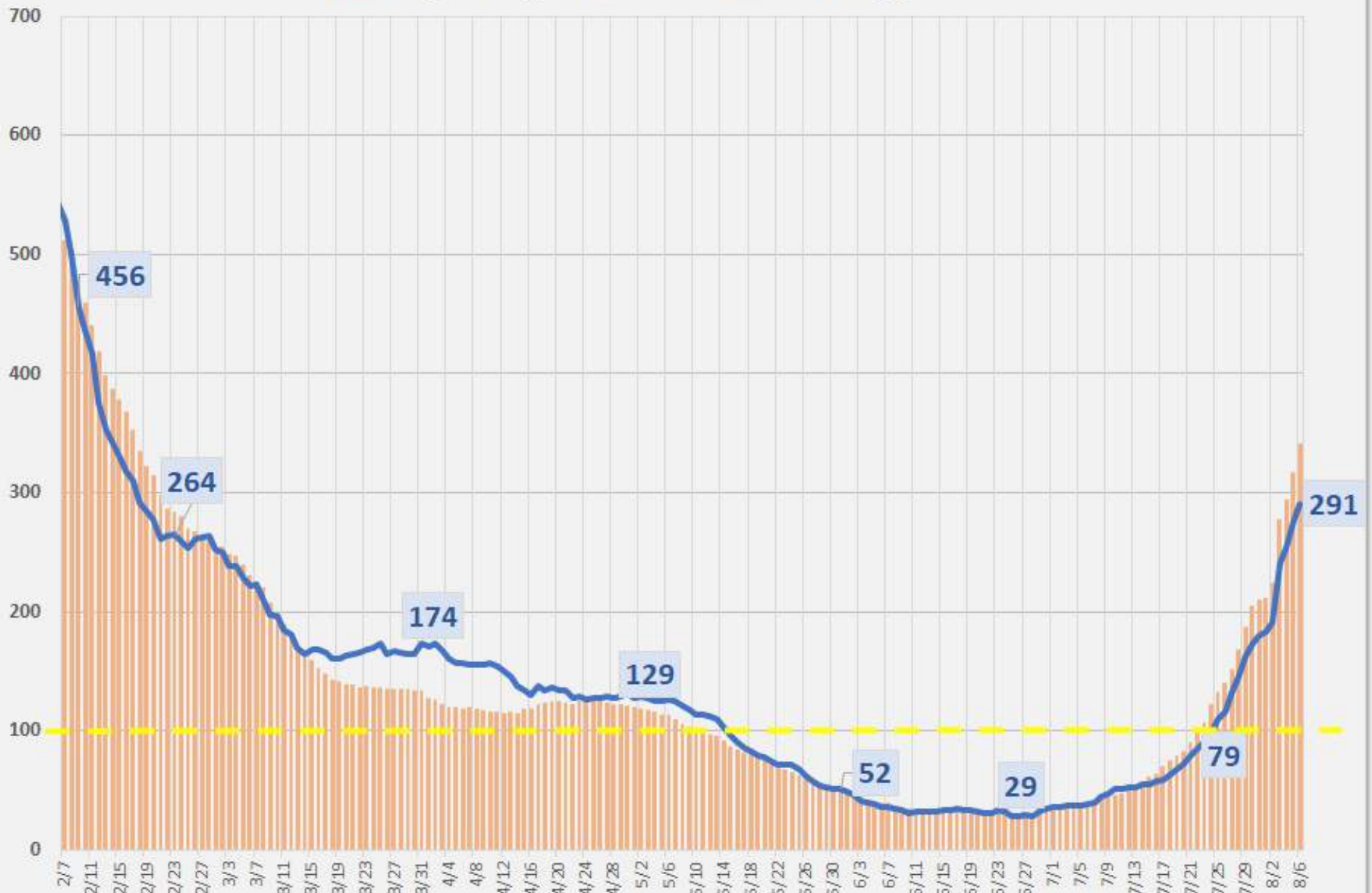


# 14 day (2 week) Rolling COVID-19 PCR Case Average per 100K population

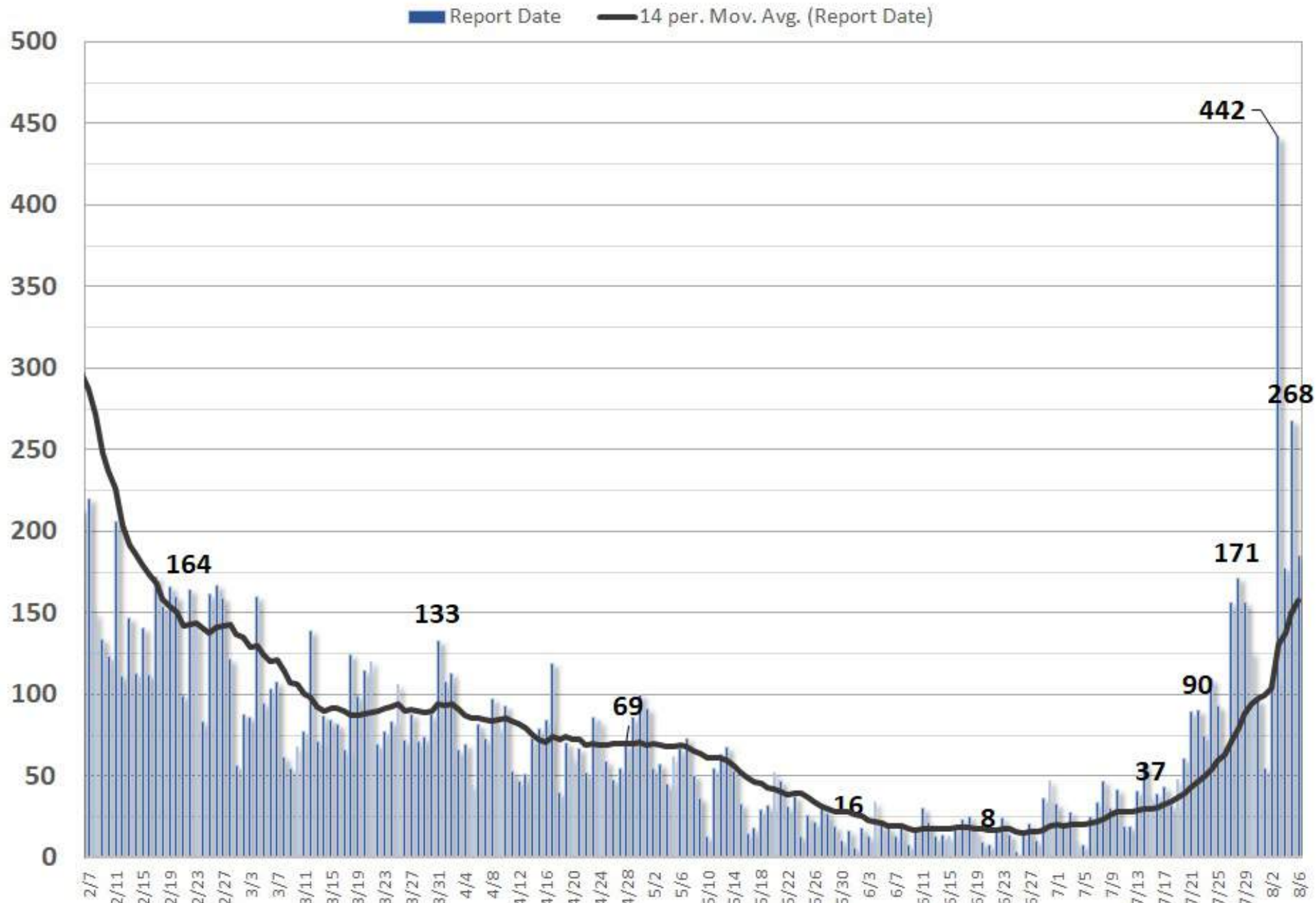
Values above yellow line are considered high spread (value >100)

Georgia 14-day per 100K

Cobb 14-day per 100K

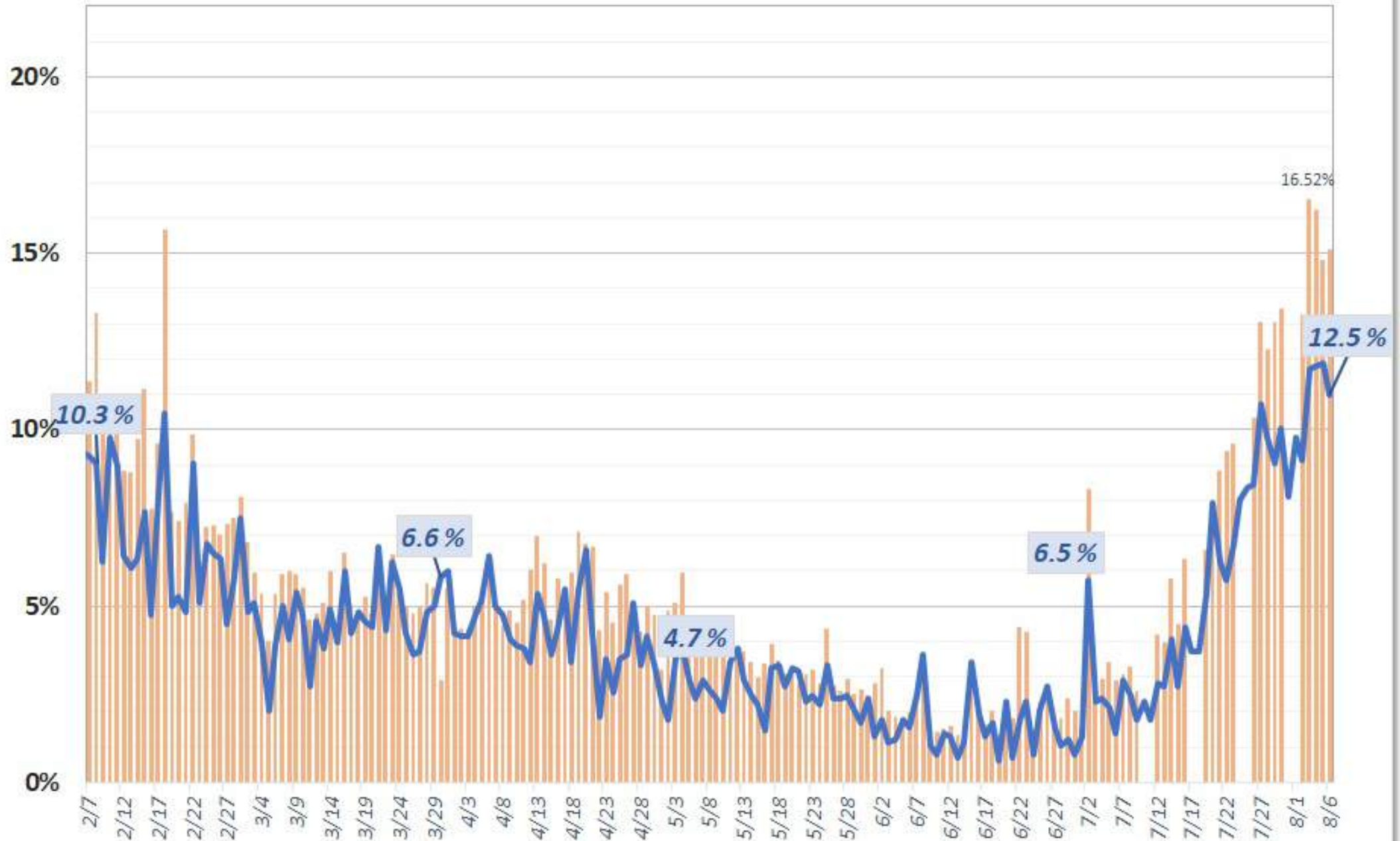


# Cobb Increase in Daily COVID-19 Confirmed Cases



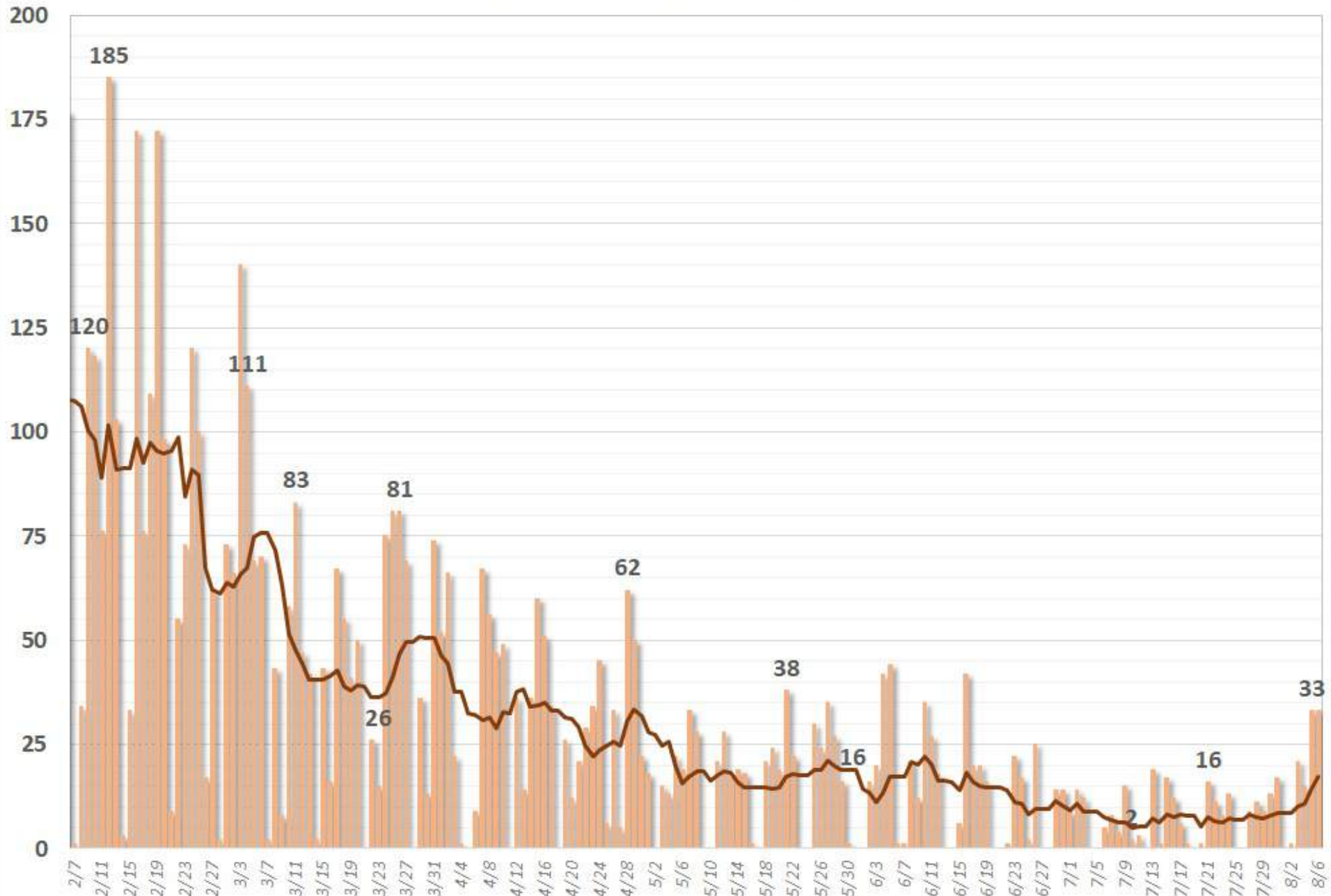
# Georgia and Cobb County: Daily % Positive, PCR COVID-19 Tests

Georgia % Positive Tests    Cobb % Positive Tests

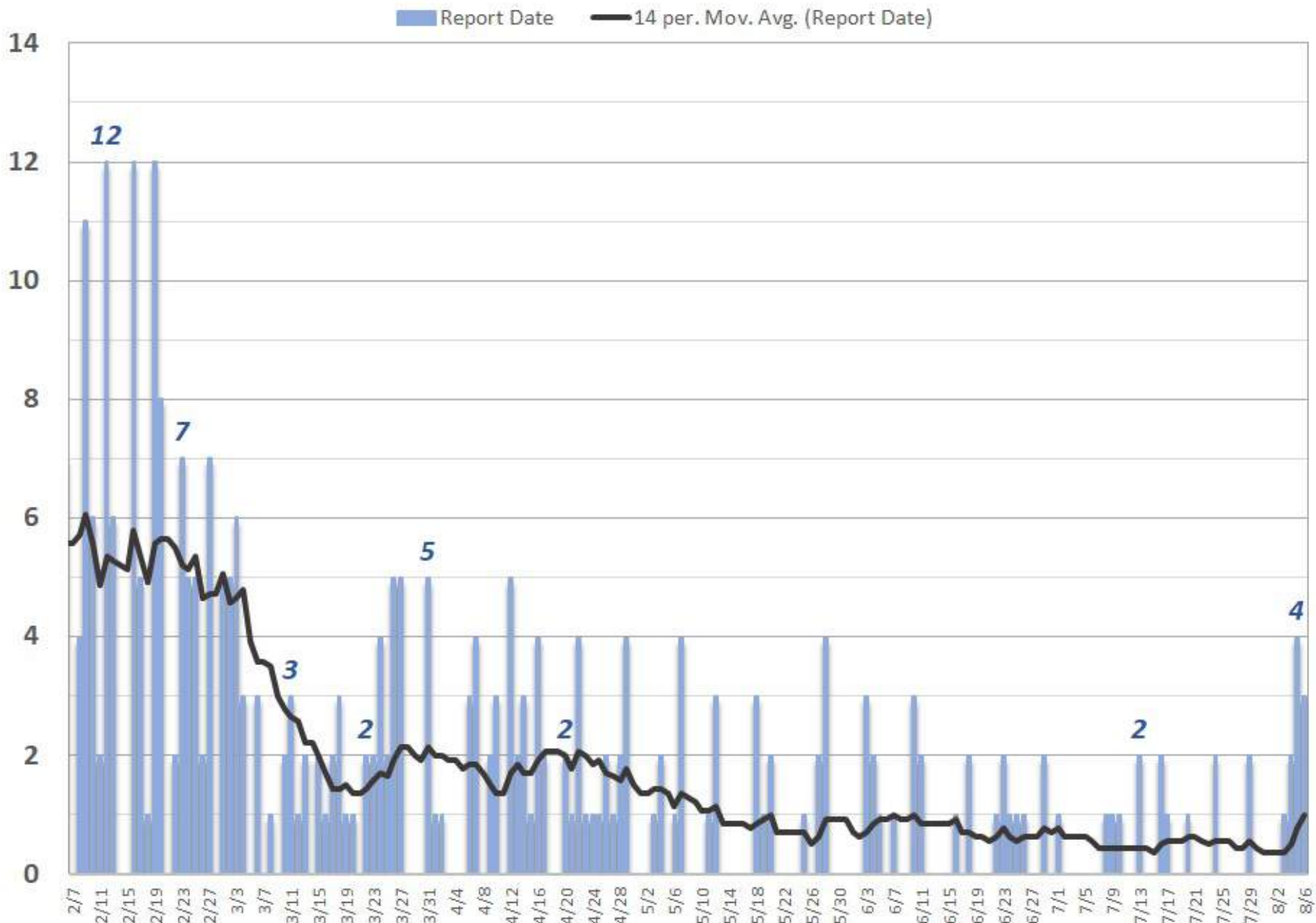


# GA Daily Increase in COVID-19 Related Deaths

Report Date    7 per. Mov. Avg. (Report Date)

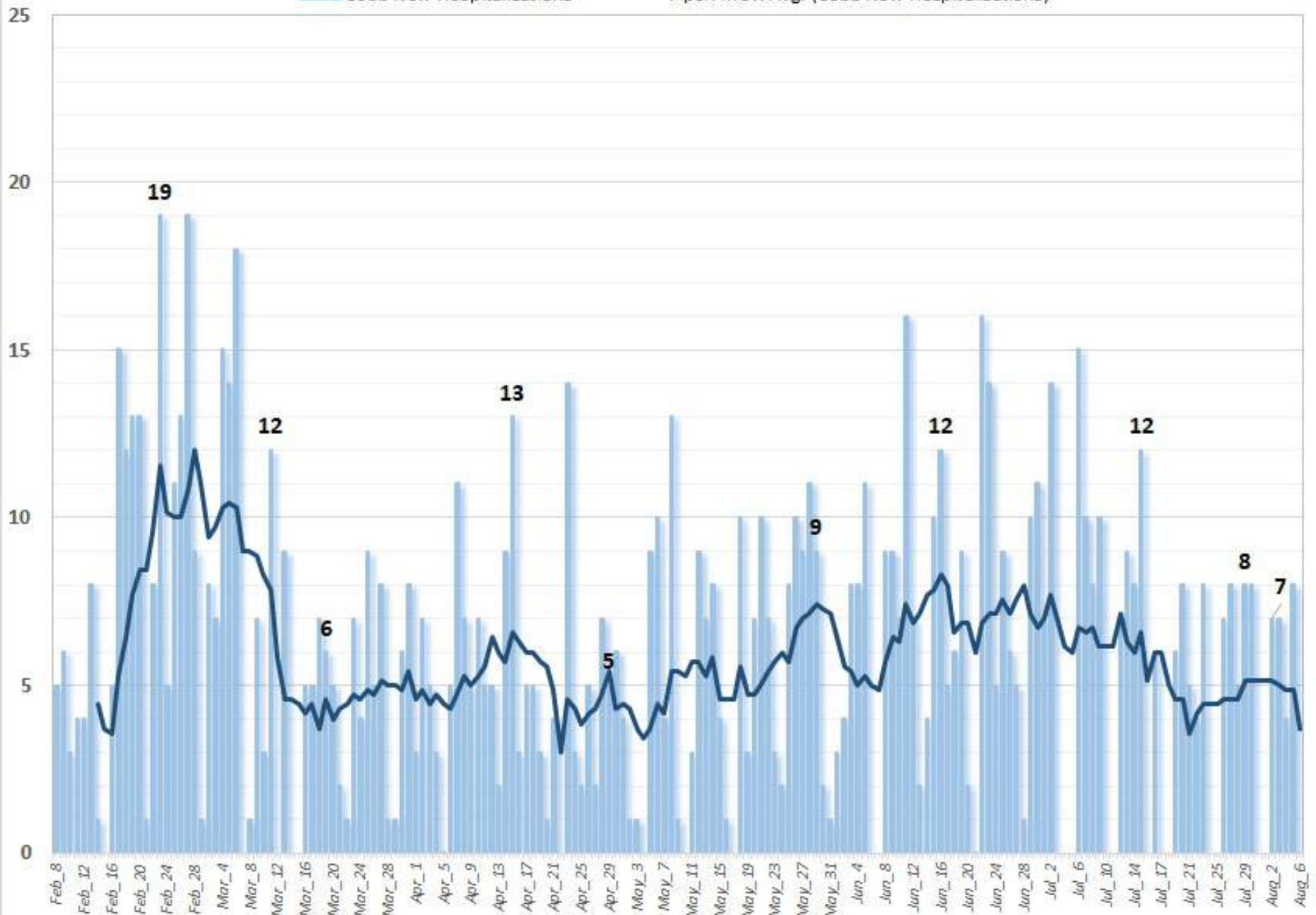


# Cobb Increase in Daily COVID-19 Confirmed Deaths (Report Date)



# Cobb Daily Increase in Hospitalizations Related to COVID-19

Cobb New Hospitalizations      7 per. Mov. Avg. (Cobb New Hospitalizations)





# Georgia Daily Increase in Hospitalizations Related to COVID-19

Georgia Daily New Hospitalizations      7 per. Mov. Avg. (Georgia Daily New Hospitalizations)

