

SFP-10GBASE-TL-DE-C

Dell® Compatible TAA Compliant 100/1000/10000Base-TX SFP+ Transceiver (Copper, 30m, RJ-45)

Features:

- SFF-8432 Compliance
- RJ-45 Connector
- Low power
- Copper Media Type
- Commercial Temperature 0 to 70 Celsius
- Hot Pluggable
- Metal with Lower EMI
- Excellent ESD Protection
- RoHS Compliant and Lead Free



Applications:

- 10GBase Ethernet
- Access and Enterprise

Product Description

This Dell® compatible SFP+ transceiver provides 100/1000/10000Base-TX throughput up to 30m over a copper connection via a RJ-45 connector. This TX module supports 100/1000/10000Base auto-negotiation and can be configured to fit your needs. It is guaranteed to be 100% compatible with the equivalent Dell® transceiver. This easy to install, hot swappable transceiver has been programmed, uniquely serialized and data-traffic and application tested to ensure that it will initialize and perform identically. It is built to meet or exceed the specifications of Dell®, as well as to comply with MSA (Multi-Source Agreement) standards to ensure seamless network integration. This transceiver is Trade Agreements Act (TAA) compliant. We stand behind the quality of our products and proudly offer a limited lifetime warranty.

ProLabs' transceivers are RoHS compliant and lead-free.

TAA refers to the Trade Agreements Act (19 U.S.C. & 2501-2581), which is intended to foster fair and open international trade. TAA requires that the U.S. Government may acquire only "U.S.-made or designated country end products.")



Absolute Maximum Ratings

| Parameter | Symbol | Min. | Max. | Unit |
|----------------------------|------------------|-------|------|------|
| Maximum Supply Voltage | V _{cc} | 3.135 | 3.6 | VDC |
| Storage Temperature | T _S | -40 | 85 | °C |
| Operating Case Temperature | T _c | 0 | 70 | °C |
| Operating Humidity | RH | 5 | 95 | % |
| Maximum Bitrate | B _{max} | | 11.4 | Gbps |

Electrical Characteristics (TOP=25°C, V_{cc}=3.3Volts)

| Parameter | Symbol | Min. | Typ. | Max. | Unit | Notes |
|---------------------------------------|-------------------|-------|------|----------------------|------|-------|
| Power Supply Voltage | V _{cc} | 3.135 | 3.30 | 3.465 | V | |
| Low Speed Input Voltage | | -0.5 | | V _{cc} +0.3 | V | |
| Two-Wire Interface Input Voltage | | -0.3 | | V _{cc} +0.5 | V | |
| Power Consumption (30m @ 25C ambient) | P _{diss} | | | 1.8 | W | |

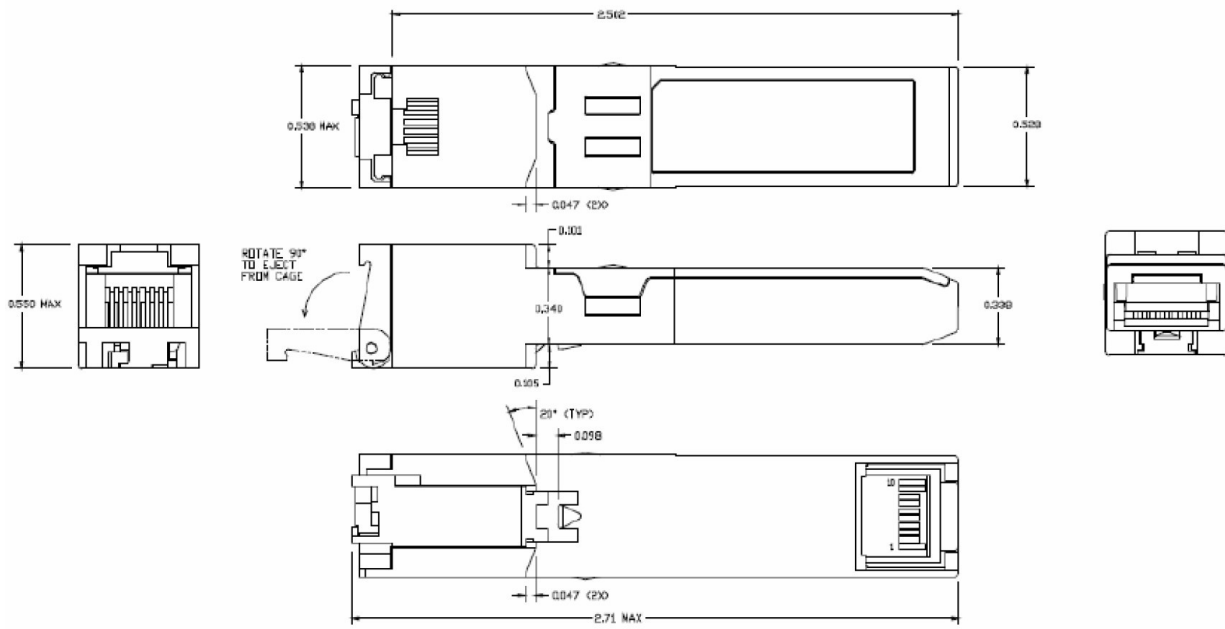
Pin Descriptions

| Pin | Symbol | Name/Descriptions | Ref. |
|-----|------------|--|------|
| 1 | VeeT | Transmitter Ground | 1 |
| 2 | Tx_Fault | Transmitter Fault LVTTTL-O | 2 |
| 3 | Tx_Disable | Transmitter Disable LVTTTL-I | |
| 4 | SDA | 2-wire Serial Interface Data Line LVTTTL-I/O | |
| 5 | SCL | 2-wire Serial Interface Clock LVTTTL-I/O | |
| 6 | Mod_ABS | Module Absent, connect to VeeT or VeeR in the module | |
| 7 | RS0 | Rate Select 0 LVTTTL-I | |
| 8 | Rx_LOS | Receiver Loss of Signal Indication LVTTTL-O | 2 |
| 9 | RS1 | Rate Select 1 LVTTTL-I | |
| 10 | VeeR | Receiver Ground | 1 |
| 11 | VeeR | Receiver Ground | 1 |
| 12 | RD- | Receiver Inverted Data Output CML-O | |
| 13 | RD+ | Receiver Non-Inverted Data Output CML-O | |
| 14 | VeeR | Receiver Ground | 1 |
| 15 | VccR | Receiver 3.3V Supply | |
| 16 | VccT | Transmitter 3.3V Supply | |
| 17 | VeeT | Transmitter Ground | 1 |
| 18 | TD+ | Receiver Inverted Data Output CML-I | |
| 19 | TD- | Transmitter Inverted Data Input CML-I | |
| 20 | VeeT | Module Transmitter Ground | 1 |

Notes:

1. The module signal grounds should be isolated from the module case.

Mechanical Specifications



About ProLabs

Our extensive experience comes as standard. For over 20 years ProLabs has delivered optical connectivity solutions that give our customers freedom and choice through our ability to provide seamless interoperability. At the heart of our company is the ability to provide state-of-the-art optical transport and connectivity solutions that are compatible with more than 100 optical switching and transport platforms.

A Complete Portfolio of Network Solutions

ProLabs is focused on innovations in optical transport and connectivity. The combination of our knowledge of optics and networking equipment enables ProLabs to be your single source for optical transport and connectivity solutions from 100Mb to 1.6T while providing innovative solutions that increase network efficiency. We provide the optical connectivity expertise that is compatible with and enhances your switching and transport equipment.

The Trusted Partner

Customer service is our number one value. ProLabs has invested in people, labs and manufacturing capacity to ensure compatible products, and immediate answers to your questions. With Engineering and Manufacturing offices in the U.K. and U.S. augmented by field offices throughout the U.S., U.K. and Asia, ProLabs is able to be our customers best advocate 24 hours a day.



Contact Information

ProLabs US

Email: sales@prolabs.com

Telephone: 952-852-0252

ProLabs UK

Email: salessupport@prolabs.com

Telephone: +44 1285 719 600