

**ADD-OWDM-MUXSL8-295-311**

8 Channel O-Band 1W LGX WDM MUX or DEMUX (Simplex) CARTRIDGE, 1295.56nm-1311.43nm, with LC/UPC Adapters

**Features**

- 8 Channel CWDM
- 1U LGX Cartridge
- Low optical insertion loss
- Corning G.657.A1 fiber
- Simplex LC/UPC connectors
- OWDM
- 8 Channel
- Operating temperature: 0°C ~ +70°C

**Product Description**

This is an 8 channel OWDM mux demux that operates over channels 295 through 311. This unit can be used as either a multiplexer or de-multiplexer (mux/demux), and is a plug and play system. All of our mux/demux products are 100% compliant and provide a cost effective solution for your network upgrade needs. With our certification test program, we guarantee your product will work correctly the first time.

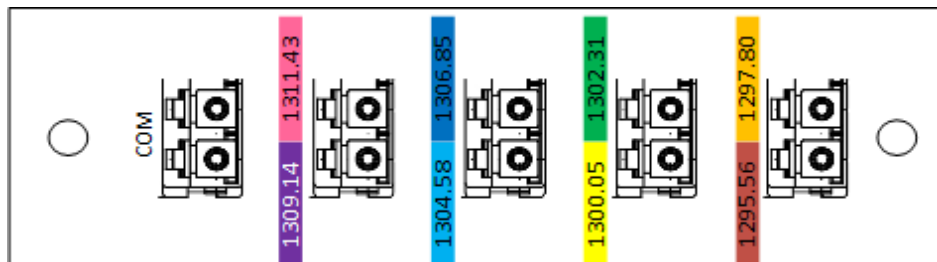
## Specifications

Parameter		Specifications	Unit
Channel Number		8	
OWDM Channel Spacing		400	GHz
OWDM Central Wavelength ( $\lambda_C$ )		1311.43/1309.14/1306.85/1304.58/ 1302.31/1300.05/1297.80/1295.56	nm
OWDM Passband Bandwidth		$\lambda_C \pm 0.4$	nm
Insertion Loss		$\leq 3.1$	dB
Isolation	Adjacent Channels	$\geq 30$	dB
	Non-Adjacent Channels	$\geq 45$	dB
Directivity		$\geq 45$	dB
Return Loss		$\geq 45$	dB
PDL		$\leq 0.20$	dB
PMD		$\leq 0.20$	ps
Operation Temperature		0 to 70	°C
Storage Temperature		-40 to 85	°C
Optical Operating Power		$\leq 300$	mW
Fiber Type		Corning G.657.A1 Fiber	
Connector Type		LC/UPC (Simplex)	
Package Dimension		1U LGX Box	mm

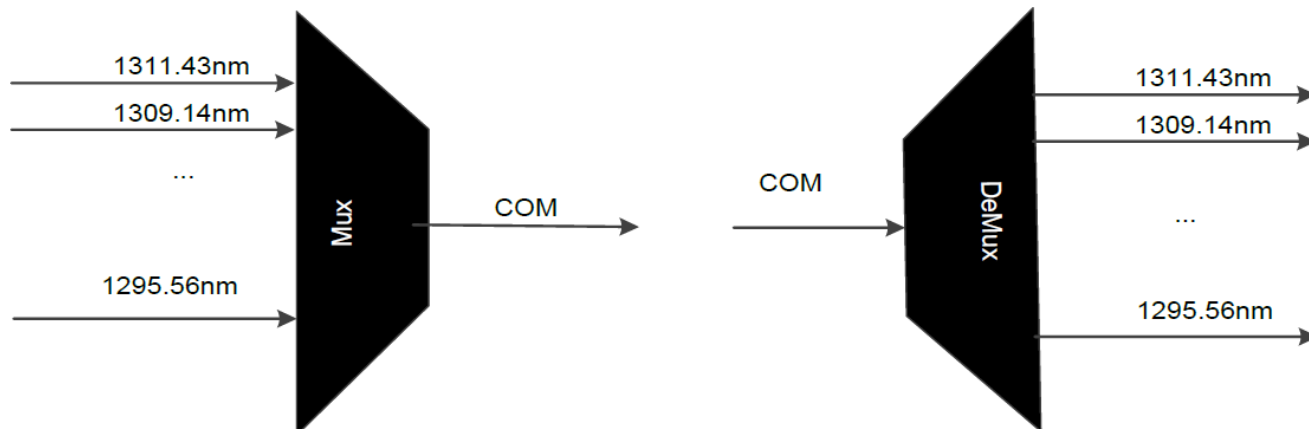
## Notes:

1. All data is measured with connectors.

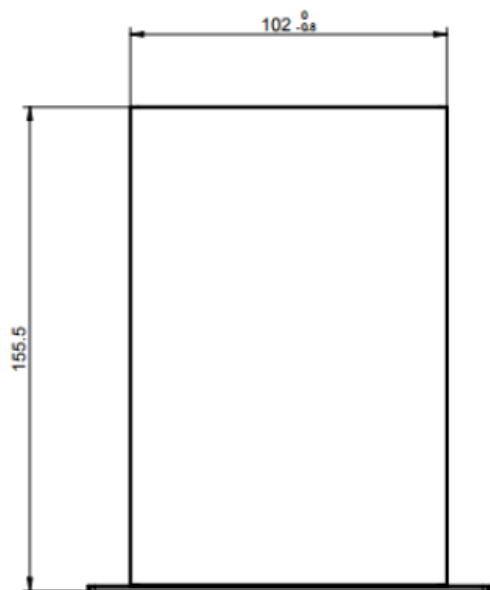
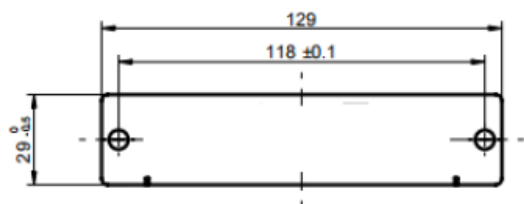
## Faceplate Layout



## Application Diagram



## Mechanical Specifications



**Label Color**

Wavelength	Color
1311.43	Peach
1309.14	Purple
1306.85	Blue
1304.58	Aqua
1302.31	Green
1300.05	Yellow
1297.80	Orange
1295.56	Red

## About AddOn Networks

In 1999, AddOn Networks entered the market with a single product. Our founders fulfilled a severe shortage for compatible, cost-effective optical transceivers that compete at the same performance levels as leading OEM manufacturers. Adhering to the idea of redefining service and product quality not previously had in the fiber optic networking industry, AddOn invested resources in solution design, production, fulfillment, and global support.

Combining one of the most extensive and stringent testing processes in the industry, an exceptional free tech support center, and a consistent roll-out of innovative technologies, AddOn has continually set industry standards of quality and reliability throughout its history.

Reliability is the cornerstone of any optical fiber network and is ingrained in AddOn's DNA. It has played a key role in nurturing the long-term relationships developed over the years with customers. AddOn remains committed to exceeding industry standards with certifications from ranging from NEBS Level 3 to ISO 9001:2005 with every new development while maintaining the signature reliability of its products.



## U.S. Headquarters

Email: [sales@addonnetworks.com](mailto:sales@addonnetworks.com)

Telephone: +1 877.292.1701

Fax: 949.266.9273

## Europe Headquarters

Email: [salesupportemea@addonnetworks.com](mailto:salesupportemea@addonnetworks.com)

Telephone: +44 1285 842070