

## ADD-IMC-PSU-48V

48 Volt Power Supply Unit For Industrial Grade Media Converters

### Features

- EN62368 and IEC62368 Compliant
- Color: Black
- Operating Temperature: -40 to 40 Celsius
- UL 60950 Compliant
- CSA C22.2 Compliant



### Product Description

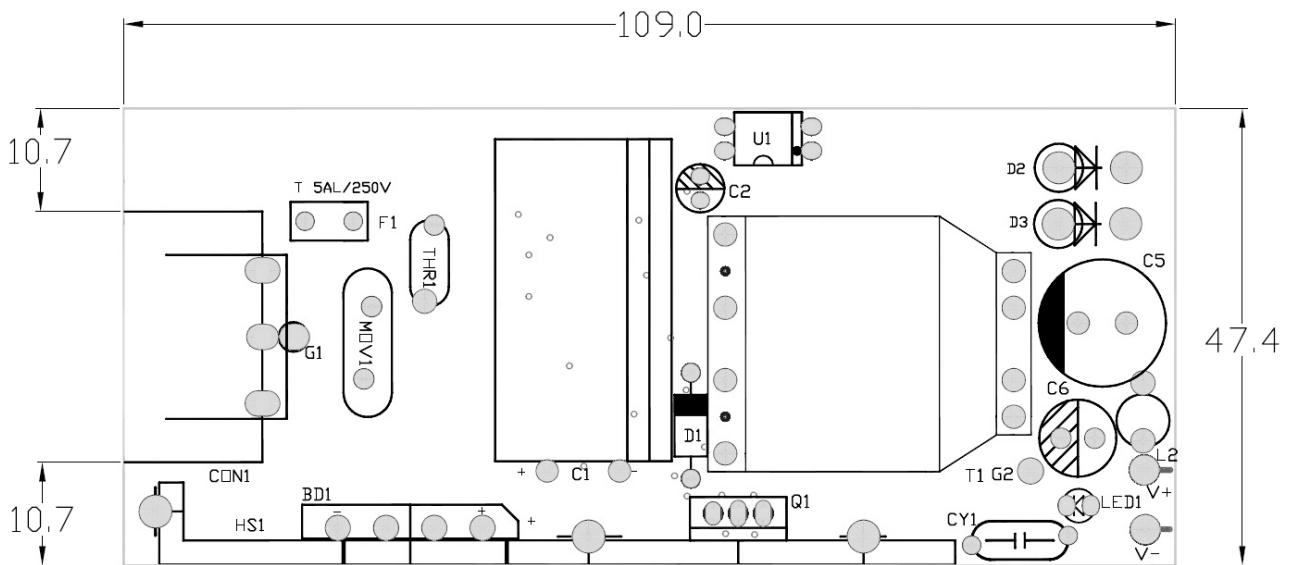
This is a 48Vdc DIN rail industrial power supply. Can be used on all industrial grade media converters including those with POE. Operating temperature range is -40 to 40C and AC input range is 90 to 264VAC.

### Electrical Specifications

Parameter	Specifications	Notes
<b>Input Characteristics</b>		
Rated Input Voltage	100-240VAC	
Operating Range	90-264VAC	
Rated Input Frequency	50/60Hz	
Inrush Starting Current	≤60A	220VAC Cold Start Full Load
Maximum Input Current	≤2A	
Efficiency	≥87%	115 to 230VAC
Power Factor	≥0.4	
Maximum No-Load Power	≤0.15W	115 to 230VAC
<b>Output Characteristics</b>		
Rated Output Voltage	52VDC	
Output Voltage Range	52VDC±5%	
Rating Load Current	1.25A	

<b>Load Current Range</b>	0-1.25A	
<b>Maximum Capacitive Load</b>	3000uF	cold position
<b>Working Environment</b>		
<b>Operating Temperature</b>	-40 to 40°C	
<b>Operating Relative Humidity</b>	20% to 90%	
<b>Storage Relative Humidity</b>	5% to 95%	
<b>Storage Temperature</b>	-40 to 60°C	

**Mechanical Specifications**



**Polarity:** 

**DC Cord:** 22AWG 300V 80°C L=1000mm±30mm

**DC Plug:** 5.5\*2.5\*10mm, H-Type

**Color:** Black

**Weight:** 205g



## **About AddOn Networks**

In 1999, AddOn Networks entered the market with a single product. Our founders fulfilled a severe shortage for compatible, cost-effective optical transceivers that compete at the same performance levels as leading OEM manufacturers. Adhering to the idea of redefining service and product quality not previously had in the fiber optic networking industry, AddOn invested resources in solution design, production, fulfillment, and global support.

Combining one of the most extensive and stringent testing processes in the industry, an exceptional free tech support center, and a consistent roll-out of innovative technologies, AddOn has continually set industry standards of quality and reliability throughout its history.

Reliability is the cornerstone of any optical fiber network and is engrained in AddOn's DNA. It has played a key role in nurturing the long-term relationships developed over the years with customers. AddOn remains committed to exceeding industry standards with certifications from ranging from NEBS Level 3 to ISO 9001:2005 with every new development while maintaining the signature reliability of its products.

## **U.S. Headquarters**

Email: [sales@addonnetworks.com](mailto:sales@addonnetworks.com)

Telephone: +1 877.292.1701

Fax: 949.266.9273

## **Europe Headquarters**

Email: [salesupportemea@addonnetworks.com](mailto:salesupportemea@addonnetworks.com)

Telephone: +44 1285 842070