

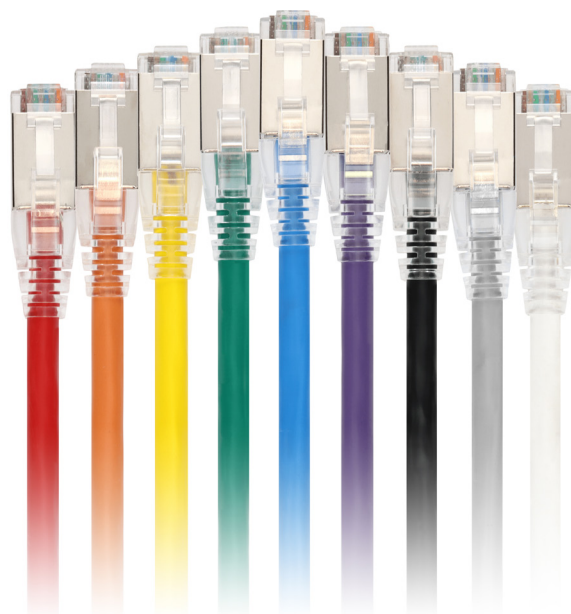
SHIELDED CAT 6A EASY CLEAR BOOT ETHERNET CABLES



The CAT6A shielded easy clear boot PVC ethernet cable from AddOn Networks is a high-quality, reliable patch cable designed for demanding networking environments. This cable features shielded RJ-45 (male) to RJ-45 (male) connectors with a low profile clear easy boot locking tab protector. The cable remains lightweight and flexible, making it easier to run with fewer snags.

Features

- **Blazing-Fast Connectivity:** The CAT 6A cable supports data transfer speeds of up to 10 Gbps (Gigabits per second) over the full range of 100 meters (328 feet) and operates at a frequency of up to 500 MHz. This makes it ideal for the most demanding networking tasks, including large data transfers, video streaming, and online gaming.
- **Shielded Twisted Pair (STP):** The cable consists of pairs of insulated copper wires twisted together enclosed in a conductive shield, usually made of foil or braided wire. This shielding provides a barrier against external electromagnetic interference (EMI) and reduces crosstalk between pairs, ensuring a stable and reliable connection.
- **PVC-CM Jacket:** The cable is encased in a durable PVC-CM jacket, which is suitable for indoor use. This type of jacket is flexible and lightweight, making the cable easy to manage and install.
- **PoE Capable:** The cable supports Power over Ethernet (PoE), allowing it to transmit both data and power over a single cable. This is particularly useful for devices like IP cameras, VoIP phones, and wireless access points.
- **TIA Compliant:** The cable meets the standards set by the Telecommunications Industry Association (TIA), ensuring it performs reliably for all networking needs.



Part Number Template

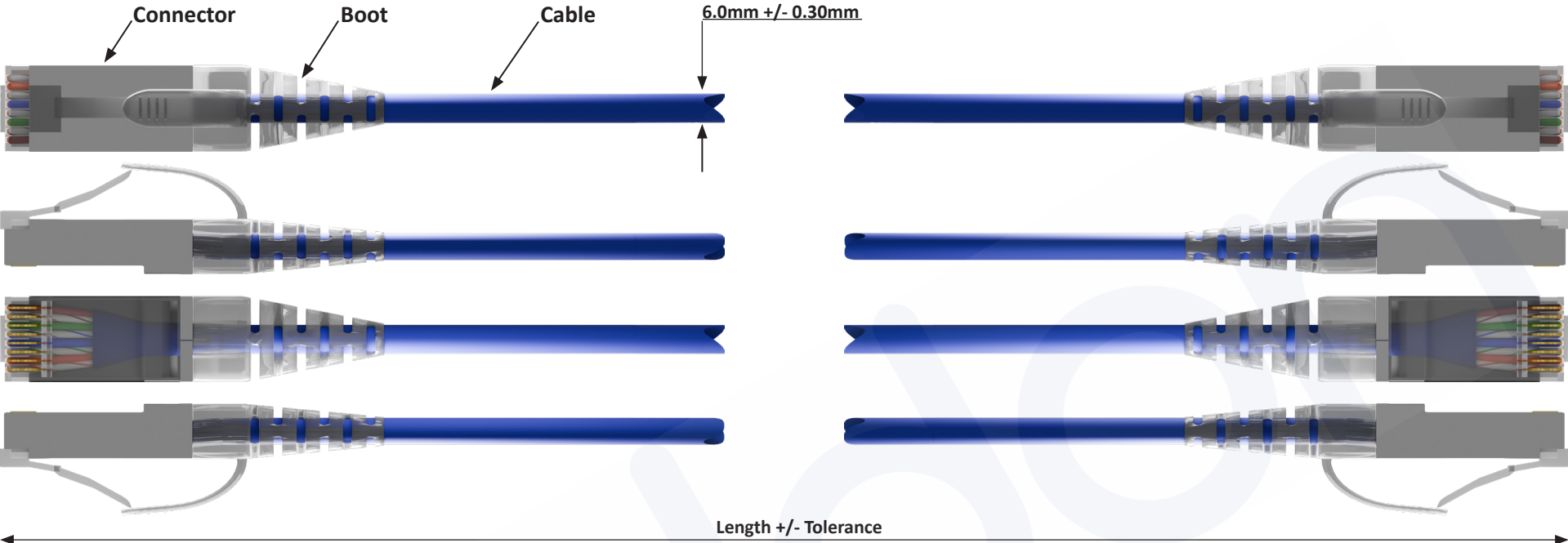
Color	Lengths
Red	ADD-xFCAT6AS-RD
Orange	ADD-xFCAT6AS-OE
Yellow	ADD-xFCAT6AS-YW
Green	ADD-xFCAT6AS-GN
Blue	ADD-xFCAT6AS-BE
Purple	ADD-xFCAT6AS-PE
Black	ADD-xFCAT6AS-BK
Gray	ADD-xFCAT6AS-GY
White	ADD-xFCAT6AS-WE

Technical Specifications


Parameter	Specification
Boot Type:	Shielded Easy Clear Boot
Connector Type:	RJ-45 (Male) to RJ-45 (Male)
Wire Gauge:	24AWG
Conductor Material:	Copper
Termination Type:	Straight
Shielding:	Yes (STP)
Strain Relief:	Yes
Wire Scheme:	T568B

For a full list of products, please visit us at addonnetworks.com/copper

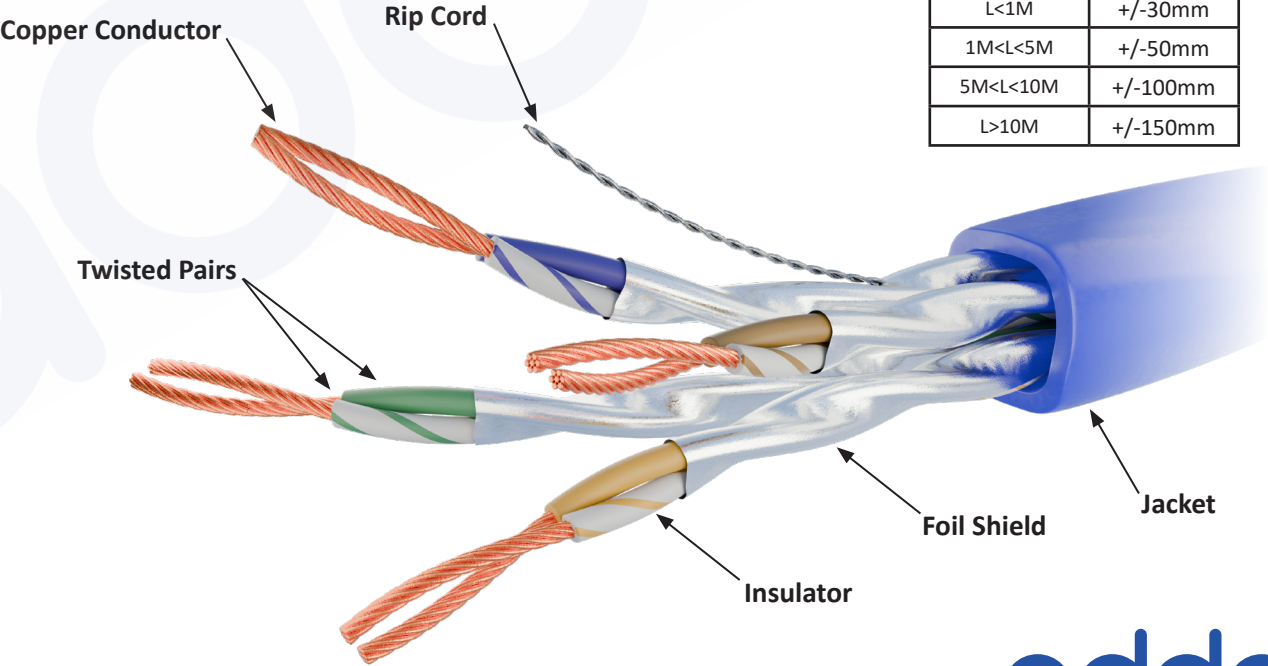
Mechanical Specifications



Length	Tolerance
L<1M	+/-30mm
1M<L<5M	+/-50mm
5M<L<10M	+/-100mm
L>10M	+/-150mm



Color (T568B)	P1	Pairs	P2
WHITE/ORANGE	1	-----	1
ORANGE	2	-----	2
WHITE/GREEN	3	-----	3
BLUE	4	-----	4
WHITE/BLUE	5	-----	5
GREEN	6	-----	6
WHITE/BROWN	7	-----	7
BROWN	8	-----	8



About AddOn Networks

AddOn Networks an Amphenol company, is the global leader in optical connectivity solutions serving data center, enterprise, government, education, and healthcare provider networks.

We operate in over 25 countries through long-standing commercial channels to provide continuity of supply and world-class service.

AddOn offers a full network catalog of optical transceivers and high-speed cabling which are 100% compatible in form and functionality across 100 OEM manufacturers, covering more than 20,000 systems and platforms. Certified solutions are backed by a lifetime warranty and 24/7/365 global field engineering support.

North America
sales@addonnetworks.com

15775 Gateway Circle
Tustin, CA 92780
+1 877 292 1701

EMEA
salesupportemea@addonnetworks.com

Eagle House, Lakeside Business Park,
South Cerney, Gloucestershire, GL7 5XL
+44 1285 842070



For more information, please visit www.addonnetworks.com