

ADD-CWDM-MUXDL435-47-49+59-61

4CH CWDM Mux and Demux (Duplex), 1W LGX, 1471, 1491, 1591, 1611 + 1310 (1260 - 1360) and 1550 (1531 - 1571) ports, UPC/LC Connectors

Features

- CWDM
- +1310+1550 wide band (total 6 channels)
- 1260nm~1620nm
- 3.0dB max link loss
- 1W LGX Form Factor
- UPC/LC Adapters
- Operating Temperature: -40°C to 85°C

Product Description

CWDM Mux/Demux solutions are ideal for maximizing existing fiber infrastructure. Passive mux/demux solutions can support point-to-point, multipoint, and fiber ring applications. CWDM can support up to 6 Channels at 1471, 1491, 1591, 1611 + 1310 (1260 - 1360) and 1550 (1531 - 1571) ports.

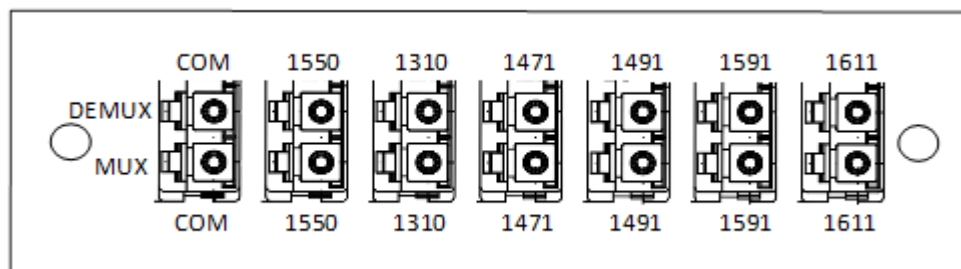
Specifications

Parameters	Region	Measure from->to	Unit		Specification
Optical Operating Wavelength			nm		1260~1620
Channels					6
Channel Spacing	channels		nm		20
Center wavelength	channels		nm		1310,1550,1471,1491 ,1591,1611
Passband Region	CWDM channels		nm		ITU±6.5
	1310 port	1310			1310+/-40
	1550 port	1550			1550+/-15
Insertion Loss	channels	com-> CWDM channels&1550	Max	dB	2.0
	upgrade port	com ->1310port	Max	dB	1
Link loss	channels	com-> CWDM channels&1550	Max	dB	3.0
	upgrade port	com ->1310port	Max	dB	2.0
Isolation	adjacent channel	com->channels	Min	dB	30
	non-adjacent channel	com->channels			45
	CWDM passband	com -> 1310&1550 port			30
Ripple	passband	com->all channels	Max	dB	0.5
Polarization Dependent Loss			Max	dB	0.2
Polarization Mode Dispersion			Max	ps	0.2
Return Loss			Min	dB	45
Directivity			Min	dB	45
Power Handling			Max	mW	300
Operation Humidity			RH%		5~95
Operating Temperature			°C		-40~+85
Storage Temperature			°C		-40~+85
Fiber Type					Corning G.657A1
Connector Type					LC/UPC
Package Dimensions			mm		1W LGX

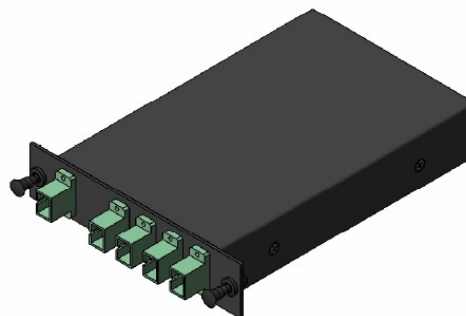
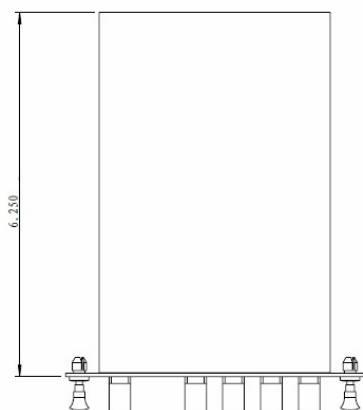
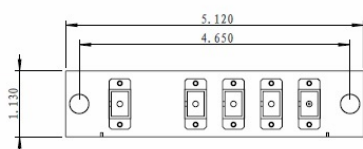
Note:

1. All data are measured with connectors.

Faceplate Layout



Mechanical Specifications



Contact Information

Founded in 1999, AddOn Networks is North America's leading provider of transceivers and high speed cabling. With a reputation for high quality products as well as an extensive custom design portfolio, AddOn has the connectivity solution regardless of the requirement.

At AddOn, 100% of the products we ship every day are tested in the specific application for which they are intended—never batch or spec tested only. We run bandwidth, distance and IOS network tests. We have documented an impressive 0.03% failure rate over the last 10 years. To continue this rate of success we invest millions annually in our own on-site testing lab.

Corporate office:
AddOn Networks
15775 Gateway Circle
Tustin, CA 92780

Tel: 877-292-1701
Fax: 949-266-9273
Email: sales@addonnetworks.com
Email: support@addonnetworks.com
Web: <http://www.addonnetworks.com>