

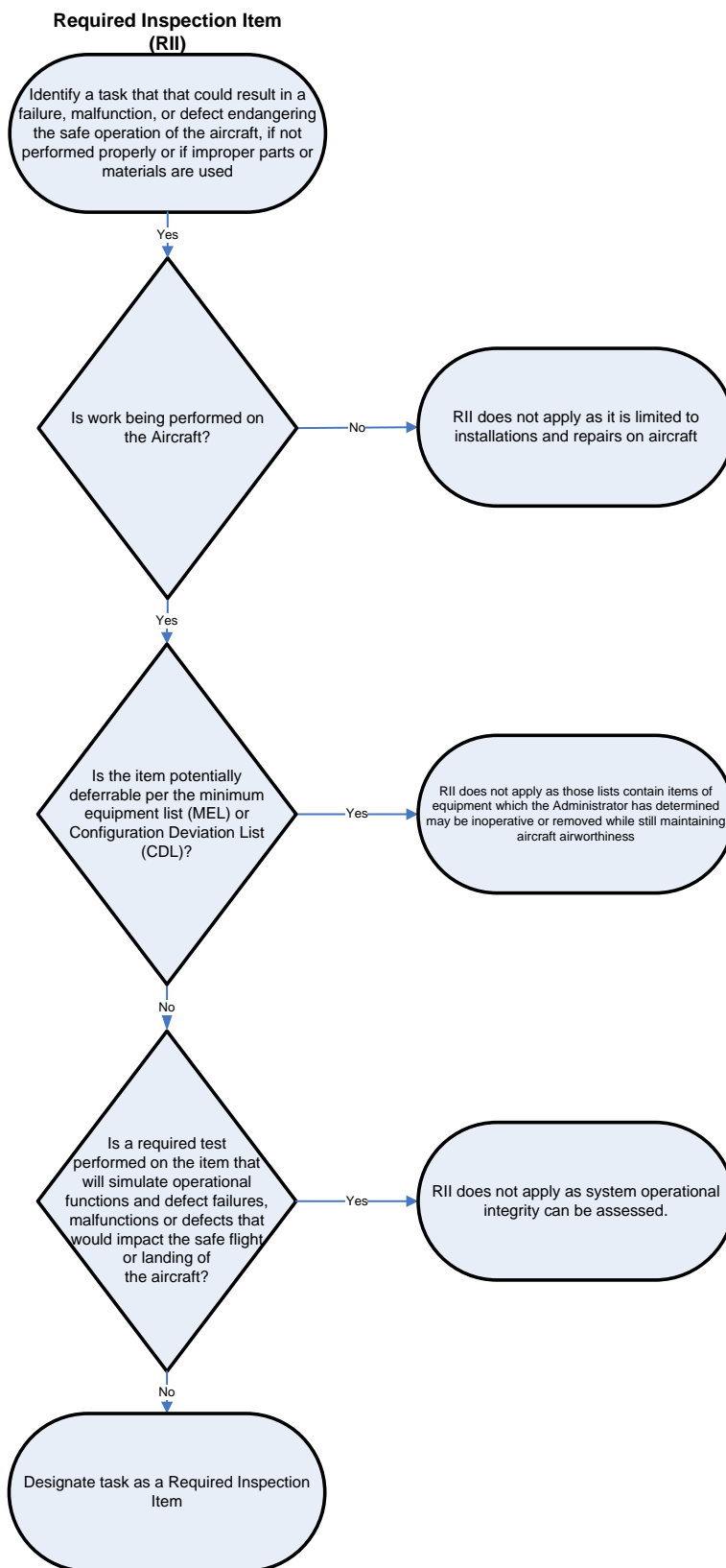
CHAPTER 7. REQUIRED INSPECTION ITEMS

7-1. Required Inspection Items (RII).

a. Tasks as RIIs. Title 14 CFR part 121, § 121.369(b) and part 135, § 135.427(b) require you to designate certain tasks as RIIs. Your RIIs must include at least those tasks that could result in a failure, malfunction, or defect that endangers the safe operation of the aircraft if the task is not completed properly or if you use improper parts or material. If other persons perform maintenance tasks for you, you may authorize them to accomplish your RII requirement, provided that your manual satisfies the regulatory requirements, as outlined in paragraph 7-2. Consistent with the regulations, you remain primarily responsible for the performance of each RII accomplished by the other person. When another person performs RII to include the entire aircraft, this is considered Essential Maintenance.

NOTE: See Chapter 9 for more information on Essential Maintenance.

b. Making RII Lists. Your RII lists should identify specific items of maintenance for each aircraft type you operate. It is inappropriate to designate entire systems as RIIs. You should adhere to a decision process, similar to the following, when creating a list of RIIs:

FIGURE 7-1. REQUIRED INSPECTION ITEMS

c. RIIs and Safety. RIIs relate directly to flight safety. Consider all your RIIs with the same safety of flight consideration and emphasis even if accomplishing an individual RII adversely impacts your flight schedule, it is related to a scheduled or an unscheduled task, or it arises at an awkward time or at an inconvenient location.

7-2. RII PROCEDURES, STANDARDS, AND LIMITS.

a. List of Other Persons. Your manual must include a list of persons with whom you have arranged for the performance of any required inspections (§§ 121.369(a) and 135.427(a)), both within your organization and within other organizations that perform maintenance on your behalf. This listing must include a designation by occupational title of the personnel authorized to perform each required inspection (§§ 121.369(b)(3) and 135.427(b)(3)).

b. Certification. With consideration of the exception at §§ 121.378(a) and 135.435(a), each individual that you grant an RII authorization to must hold an appropriate airman's certificate. This is an air carrier qualification requirement; the individual does not exercise that certificate when accomplishing the RII. You must formally notify each of these individuals of their RII authorization as well as its scope (§§ 121.371(d) and 135.429(e)).

c. RII Requirements. You should clearly identify your RII requirements on work forms, job cards, engineering orders, etc., or by any other method consistent with your maintenance program. A primary concept of the RII function is to prevent any person who performs any item of work from performing any required inspection of that work (§§ 121.369(b)(7) and 135.427(b)(7)). Therefore, it is important that you identify RIIs whenever possible so that everyone knows that an RII is required. You should also clearly state RII buy-back procedures (§§ 121.369(b)(4) and 135.427(b)(4)).

d. Standards and Limitations. You must set procedures, standards, and limits necessary for required inspections, and acceptance or rejection of the RII (§§ 121.369(b)(5) and 135.427(b)(5)). You should have those procedures, standards, and limits necessary for the accomplishment of your required inspections. You must also have those procedures, standards, and limits necessary for the acceptance or rejection of each of your RIIs. As you will not find RIIs or procedures, standards, and limits for RIIs in an Original Equipment Manufacturer (OEM) manual, you will have to develop these and put them in your manual. Your manual must specify the method of performing required inspections (§§ 121.369(b)(3) and 135.427(b)(3)).

e. Procedures. Your manual must include procedures to ensure that you perform and complete all required inspections (§§ 121.369(b)(6) and 135.427(b)(6)) before you release the aircraft to service (§§ 121.369(b)(9) and 135.427(b)(9)).