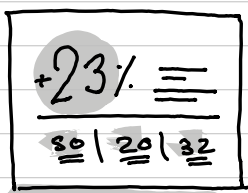


What are ways to showcase or prove the impact of my student Service Design project?

In short: stories, quotes, numbers, before and after, validation from organizations, scaling, photos, awards, certifications, principles versus achievements, etc. all are ways to prove your impact.



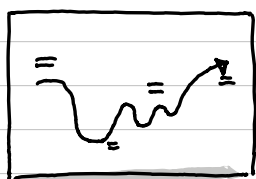
statement



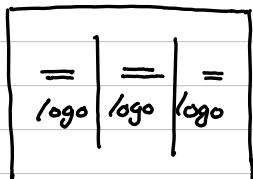
big number



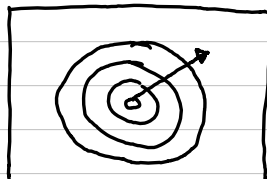
compare



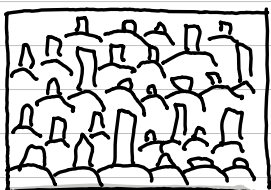
story



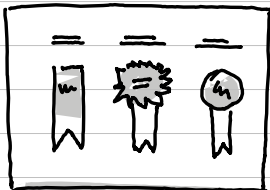
validation



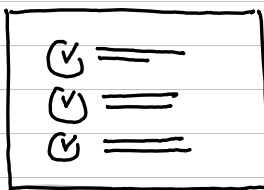
scale



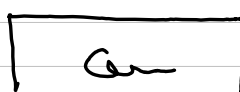
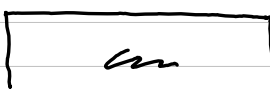
photo



awards and certifications



plan versus achievement



The first thing is to be clear on what is the type of impact that you want to prove. Once that's clear you can then basically look for two types of evidence:

1. qualitative evidence or data
2. quantitative evidence or data

I often suggest to have a mix of both, as there are people who will judge your work who have an excel sheet in their brain and others a poetry book.

A good way to find inspiration is to look at presentations from previous years and to create a sort of moodboard of impact proofs. You can also find inspiration in professional case studies.

Backstage of this article

This article was illustrated and written by hand on a refurbished Remarkable II tablet. The handwritten text was converted into typed text using the connect service by Remarkable. If you are curious you can download the original note below.