

Start Here

G7

G7 Basics

G7 shows your glucose information on your display devices.

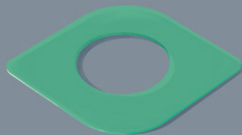
What's in the Sensor Box

Sensor and Applicator



- During setup, we'll show you how to use the applicator to insert the built-in sensor under your skin
- The sensor sends a glucose reading to your display device(s) every 5 minutes
- The sensor lasts up to 10 days with a 12-hour grace period

Overpatch



After you insert the sensor, you can use the overpatch to help keep the sensor on your skin.

Instructions

During setup, use the sensor insertion instructions found in the app or in the bundle with the overpatch.

G7 Basics

G7 shows your glucose information on your display devices.

Which Display Device are you Setting Up?

- **App**

Go to section: Setting Up App

- **Receiver**

Go to section: Setting Up Receiver

Use up to 3 Display Devices

Get your glucose information on your phone, Apple Watch, and the Dexcom receiver.

You can set up the app, the receiver, or both, in either order.

App or receiver may not be available in all regions.

For supported smart phones and operating systems go to:

dexcom.com/compatibility

Review Indications for Use in the *G7 User Guide*.

All graphics are representational. Your product may look different.

Setting Up App

1. Get Started

Must have secure internet access during setup.

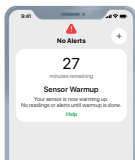
- Go to the Apple App Store or Google Play Store to download the Dexcom G7 app



- Open the app
- Login or create an account

3. Sensor Warmup

Sensor warmup timer tells you when you'll start getting readings and alerts.



2. Set Up

- Follow app instructions to set up app
- For instructions on inserting the sensor, follow app instructions or go to *Inserting Sensor* instructions in sensor box
- After inserting and pairing, follow local guidelines for throwing out the applicator and recycling the Dexcom packaging

4. Your Sensor Session

Go to the *G7 User Guide* to find out more.

Setting Up Receiver

1. Get Started

Press **Select** button for 3–5 seconds to turn on receiver



2. Set Up

- Follow instructions on receiver screens to set up receiver
- For instructions on inserting the sensor, go to *Inserting Sensor* instructions in sensor box
- After inserting and pairing, follow local guidelines for throwing out the applicator and recycling the Dexcom packaging

3. Sensor Warmup

Sensor warmup timer tells you when you'll start getting readings and alerts.



4. Your Sensor Session

Go to the *G7 User Guide* to find out more.

Receiver Navigation

The receiver screen tells you which button to use.

- To scroll faster hold down the **Scroll** button
- To move to the next field use the **Select** button



Dexcom

© 2023 Dexcom, Inc. All rights reserved.

Covered by patents dexcom.com/patents.

Dexcom is a registered trademark of Dexcom, Inc. in the United States and/or other countries. *Bluetooth* is a registered trademark owned by Bluetooth SIG. Apple is a trademark of Apple Inc., registered in the U.S. and other countries. Android is a trademark of Google LLC. All other marks are property of their respective owners.

dexcomG7



Dexcom, Inc.
6340 Sequence Drive
San Diego, CA 92121 USA
+1.858.200.0200
dexcom.com

Outside US: Contact your
local Dexcom representative

AW00047-05 Rev 003 MT00047-05
Rev Date 2023/01

CE
2797

EC REP

MDSS GmbH
Schiffgraben 41
30175 Hannover, Germany

UK
CA
0086

UK REP

MDSS-UK RP Ltd.
6 Wilmslow Road, Rusholme
Manchester M14 5TP
United Kingdom