

Instructions for Use

Start Here

G7

G7 Basics

G7 shows your glucose information on your display devices.

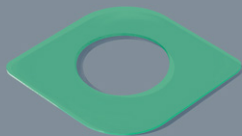
What's in the Sensor Box

Sensor and Applicator



- During setup, we'll show you how to use the applicator to insert the built-in sensor under your skin.
- The sensor sends a glucose reading to your display device(s) every 5 minutes.
- The sensor lasts up to 10 days with a 12-hour grace period.

Overpatch



After you insert the sensor, you can use the overpatch to help keep the sensor on your skin.

Instructions

During setup, use the sensor insertion instructions found in the app or in the bundle with the overpatch.

G7 Basics

G7 shows your glucose information on your display devices.

Which Display Device are you Setting Up?

- **App**

Go to section: Setting Up App

- **Receiver**

Go to section: Setting Up Receiver

Use up to 3 Display Devices

Get your glucose information on your phone, smartwatch, and the Dexcom receiver.

You can set up the phone app, the receiver, or both, in either order.

App or receiver may not be available in all regions.

For supported smartphones and operating systems go to:

dexcom.com/compatibility

Review Indications for Use in the *G7 User Guide*.

All graphics are representational. Your product may look different.

Setting Up Phone App

1. Get Started

Must have secure internet access during setup.

- Go to the App Store or Google Play Store to download the Dexcom G7 app.



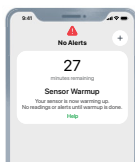
Dexcom G7

★★★★☆ 4.3 K

- Open the phone app.
- Login or create an account.

3. Sensor Warmup

Sensor warmup timer tells you when you'll start getting readings and alerts.



2. Set Up

- Follow phone app instructions to set up phone app.
- For instructions on inserting the sensor, follow phone app instructions or go to *Inserting Sensor* instructions in sensor box.
- After inserting and pairing, follow local guidelines for throwing out the applicator and recycling the Dexcom packaging.

4. Your Sensor Session

Go to the *G7 User Guide* to find out more.

Setting Up Receiver

1. Insert sensor

- You must insert your sensor before pairing to the receiver.
- For instructions go to Inserting Sensor in the sensor box.



2. Set up receiver

- Press the **Select** button for 3–5 seconds to turn on receiver.
- Follow receiver instructions to set up the receiver. Insert sensor before pairing.
- After inserting and pairing, follow local guidelines for throwing out the applicator and recycling the Dexcom packaging.

3. Sensor Warmup

Sensor warmup timer tells you when you'll start getting readings and alerts.



4. Your Sensor Session

Go to the *G7 User Guide* to find out more.

Receiver Navigation

The receiver screen tells you which button to use.

- To scroll faster hold down the **Scroll** button
- To move to the next field use the **Select** button





© 2024 Dexcom, Inc. All rights reserved.

Covered by patents dexcom.com/patents.

Dexcom, Dexcom Clarity, Dexcom Follow, Dexcom One, Dexcom Share, and any related logos and design marks are either registered trademarks or trademarks of Dexcom, Inc. in the United States and/or other countries. App Store is a trademark of Apple Inc., registered in the U.S. and other countries and regions. Google Play is a trademark of Google LLC. All other marks are property of their respective owners.

dexcomG7



Dexcom, Inc.
6340 Sequence Drive
San Diego, CA 92121 USA
+1-858-200-0200
dexcom.com

Outside US: Contact your local
Dexcom representative

CE
2797

EC REP

MDSS GmbH
Schiffgraben 41
30175 Hannover, Germany

UK
CA
0086

UK REP

MDSS-UK RP Ltd.
6 Wilmslow Road, Rusholme
Manchester M14 5TP
United Kingdom