

Study at ACG in New Zealand

International Prospectus 2021/2022





Welcome to ACG Schools

Part of Inspired Education Group



Thank you for your interest in ACG NZ Schools. We are incredibly proud of the education we provide inside and outside our classrooms to more than 3500 students each year.

Led by some of the world's top educational thinkers and managers, our six schools share knowledge, resources, training and staff, allowing us to remain at the cutting edge of educational innovation.

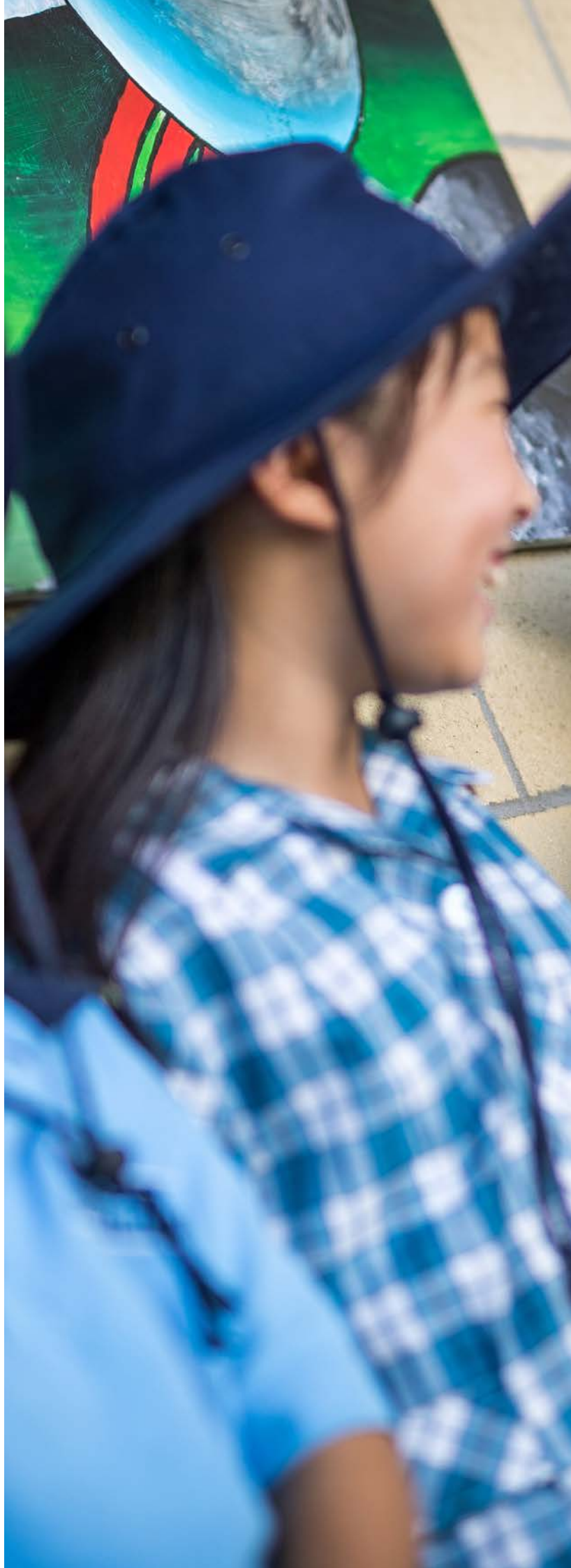
We focus on providing all-round education through sports, arts and leadership activities to equip students to take their place on the global stage.

We are equally proud of the academic success we achieve year on year. In the most recent Cambridge International examination results, **ACG Schools received four Top in World and nine Top in NZ awards** (including Top Year 11 (IGCSE) Student and Top Year 13 (A Level) Student in New Zealand), demonstrating the quality of teaching and learning that takes place in our classrooms.

ACG Schools are part of Inspired, a global premium education group that shares our educational philosophy and values. The partnership brings considerable benefits for our staff and students, including the opportunity to participate in international exchanges and summer programmes abroad. It also deepens our commitment to a global outlook, preparing our students for tomorrow's world.

We look forward to welcoming you into our classrooms.

Clarence van der Wel
CEO, ACG Schools







Study with ACG Schools

Building brighter futures

Academic excellence is the central focus at our schools, supported by a culture of inclusivity and care. Each school, while different in style and approach, shares a common goal: to help every student achieve their potential.

Whichever ACG school you choose, your child will receive the highest level of education from teachers who are leaders in their fields, delivering an internationally recognised curriculum.

Our student-centred approach to education means that we believe student wellbeing and personal development are of equal importance to academic progress. Our sports, arts and technology programmes provide a balance to academic life and ensure students develop as well-rounded, confident individuals with a wide range of abilities.

ACG Schools has a strong track record in delivering outstanding education alongside a quintessential 'Kiwi' school experience. Students get every opportunity to 'future-proof' themselves for the modern world with internationally recognised qualifications and essential skills for success.

As an Inspired School we are now part of a global network of more than 60 premium schools across five continents. Students will experience a truly global education at an ACG School and be given the opportunity to connect with other students at Inspired schools around the world.

We care about our students

We understand that for students to achieve their best they must be happy, comfortable and well supported. The wellbeing of children in their formative years is our top priority as educators, and we place great importance on the nurture and care of each student.

We make sure that everything we do at ACG Schools is in strict accordance with the New Zealand government's Pastoral Care of International Students Code of Practice.

ACG Schools provide:

- Orientation programmes for new students
- English Language Learner support
- Low student-teacher ratios
- A personalised tutor system, to help students set goals and evaluate their achievement
- A community website portal - MyACG, to help parents connect with their child's education
- Opportunities for younger students to mix with older students to foster inter-level connections
- Deans and support staff dedicated to international student wellbeing
- Homestay accommodation (with close checking of students under 18)
- Cultural activities



Cambridge Pathway
and International
Baccalaureate (IB)
Diploma programmes



Safe schools in
convenient locations



Sports and cultural
activities



English language
support



Scholarships



Dedicated school
transport



100% pass rate for
Cambridge A levels

Learn more at:

- acgedu.com
- enz.govt.nz



Why study in New Zealand?

Everything you hear about New Zealand is true.

Our beautiful country boasts some of the world's most spectacular scenery and fascinating life forms (including hobbits!), and our cities are widely recognised as emerging knowledge centres of the Asia-Pacific region.

International students who study in New Zealand access a rewarding and highly-regarded study experience at the same time as enjoying our unbeatable Kiwi lifestyle.



#1

in Worldwide Educating
for the Future Index~



#1

least corrupt country in
the world*



#3

in 2020 Index of
Economic Freedom^



#8

happiest countries in
the world^^



#2

most peaceful country
in the world**

~The Economist Intelligence Unit (EIU)

*Corruption Perceptions Index 2019, Transparency International

^The Heritage Foundation

^^World Happiness Report 2020

**Global Peace Index 2020, Institute for Economics & Peace





Where are our schools?





Academic qualifications

All ACG Schools offer the Cambridge Pathway curriculum to students from primary level to college, culminating in the internationally recognised A Level qualification.

ACG Parnell College offers senior students (Years 12 and 13) the choice between the Cambridge Pathway and International Baccalaureate (IB) programmes of study at the brand-new ACG Parnell College, Senior Campus.

Cambridge Pathway

The Cambridge Pathway is a learner-centred, enquiry-based programme of study. Beginning at primary school with the Cambridge Primary curriculum, students follow a 'pathway' through to college where they study the flexible Cambridge IGCSE, AS and A Level programmes.

Cambridge qualifications are highly valued internationally as evidence of academic ability. The qualifications equip students with the deep subject knowledge required to succeed at university and beyond, as well as the independent researching and critical thinking skills so valuable to students' future outcomes.

The Cambridge programme offers a variety of routes for students of a wide range of abilities, including those whose first language is not English.

International Baccalaureate (IB) Diploma Programme

The International Baccalaureate (IB) Diploma Programme is a standardised international curriculum accepted as a university entrance qualification in countries throughout the world.

With a focus on independent thinking, academic rigour, community service and intercultural understanding, the programme develops students for success in a rapidly-changing world. Students are encouraged to become active, compassionate and lifelong learners who understand other people and their differences.



 **Cambridge Assessment**
International Education
Cambridge International School

Progression through school



Early Learning 3 months–5 years

- Adapting to a structured environment
- School readiness programme
- Self-expression
- Socialisation
- Language development
- Problem-solving
- Low student–teacher ratios
- Individualised support



Primary School Years 1–6

- Focus on literacy and numeracy
- Cambridge Primary programme
- Specialised subjects: Music, Art, PE, Science
- Sports and arts extracurricular activities
- Small classes
- Safe, welcoming environment



Middle School Years 7–10

- Specialist teaching in all subjects
- Accelerated learning programmes
- Regular homework
- Comprehensive reports twice a year
- Subject-specific classroom facilities
- Extracurricular opportunities in sports and the arts
- Cambridge IGCSE programme
- Leadership opportunities



Senior School Years 11–13

- Focus on academic success and future pathways
- Cambridge IGCSE and A Level programmes (or International Baccalaureate programme for Year 12/13 students at ACG Parnell College)
- Variety of subject options
- Specialist teaching in all subjects
- Support and mentorship
- Leadership opportunities
- University application support
- Career support
- 24/7 pastoral support for all students

Which ACG school?



Early Learning-Year 13

**Academic excellence,
inner-city campus**

**ACG Parnell College sets the highest standards,
delivering outstanding education in a vibrant urban
learning environment.**



With views of the Waitemata Harbour and adjacent to the Domain, Auckland's upmarket suburb of Parnell is a prime location for an outstanding school.



A word from the principal ...

"Offering a seamless learning journey, ACG Parnell College welcomes international students looking to study at one of New Zealand's premier academic schools. Our academic focus and outstanding English support programmes ensure our students achieve entry into the finest universities both nationally and around the world."

– Damian Watson, Principal

Outstanding learning environment

- Cambridge International Examinations in addition to IB Diploma Programme
- An outstanding purpose-built school with a wide range of specialist facilities
- The school develops leadership skills through offering students outdoor education programmes, a student council and, in the senior school, a prefect system
- A separate Senior Campus for Years 12 and 13
- Brand new Early Learning School Campus

We warmly welcome international students

Welcoming international students into our school contributes to a high level of diversity in our student body and enriches the education of both domestic and international students. We offer:

- International deans dedicated to the wellbeing of international students
- English language learner (ELL) support

Student story

"I became aware of the possibility of attending **Oxford University** at the end of Year 12," says Sidhaarth. "My enjoyment for physics was never innate and I really had no idea what or where I wanted to study until about a year ago. The subject grew on me through a host of fun experiences at ACG Parnell College and during a time when I was confused about my future."

While keeping his future plans flexible, Sidhaarth is currently considering a career in theoretical physics research. And when asked what he is looking forward to most in his upcoming life as an Oxford undergraduate, he replies, "I think it would be the new experiences of campus life as a whole; with a mix of social activities, cricket and physics."

– Sidhaarth Kumar



#1

Top academic school in Auckland



Dedicated dean for international students



Close to transport



English language support

Find out more

- 🖱 parnellcollege.acgedu.com
- 📘 facebook.com/acgparnellcollege
- 📷 @acg.parnell

Which ACG school?



Early Learning–Year 13

Top-level academic schooling in a welcoming community

ACG Strathallan is Auckland South's top school, offering a wide variety of sports and extracurricular activities supported by a strong focus on academic achievement.



An international academic curriculum is complemented by exceptional pastoral care and a holistic learning environment to nurture the development of the skills and qualities necessary to not only be successful, but make a positive difference in the lives of others.

A word from the principal

"It is my pleasure to introduce ACG Strathallan, the perfect environment for learning. We know it can be difficult being so far away from home so we ensure our international students have the additional support that they need to be happy and successful."

– Danny O'Connor, Executive Principal



A balanced approach to education

Our experienced team of dedicated educators puts the interests of students at the heart of every school decision, creating a supportive environment that inspires students to work hard towards being the best they can be.

As well as encouraging strong academic progress and a love of learning in our students, we also focus on their personal development and wellbeing. Our sports, arts and technology programmes provide balance to students' academic lives and help ensure they develop as well-rounded, confident individuals with a wide range of experience and abilities.

We offer:

- A tutor group system incorporating students from Year 7–13 to encourage interaction between ages
- Regular goal-setting meetings between staff and individual students
- Extra support for literacy and learning
- Supervised after-school care for primary children
- Nutritious onsite lunch options

Student story

Stephen Hawking's book 'A Brief History of Time' was a life-changing read for ACG Strathallan alumnus Jeonghyeok Park. Not only did it inspire Park to follow his passion for physics, but it was also the driving force behind his dream to study at one of the world's most prestigious universities. Now a year into his natural science degree, the erudite teen is most definitely in his happy place.

"Studying at **Cambridge University** is an astonishing experience. The university offers so much learning, and you meet so many brilliant people with inspiring stories. "I've formed friendships with undergrads from diverse social and academic backgrounds, and I've also attended a few activities organised by the Korean Ethnic Society in Cambridge which has helped me adapt to university life."

– Jeonghyeok Park



#1 Top academic school in Auckland South



Dedicated dean for international students



Private school bus service



English language support

Find out more

- 🖱 strathallan.acgedu.com
- 📘 facebook.com/acgstrathallan
- 📷 [@acgstrathallan](https://instagram.com/acgstrathallan)



Early Learning–Year 13

A high-achieving and close-knit school community

ACG Sunderland has a reputation for developing a strong sense of belonging in students and staff and offering close individual attention to students supported by excellent pastoral care.



Providing a continuous educational pathway from Early Learning to Year 13, ACG Sunderland's academic programme is supported by a diverse range of sporting and cultural opportunities.



A word from the principal

"At ACG Sunderland we have dedicated staff ready to assist international students with their transition to study in New Zealand. Students are all mainstreamed into academic classes with integrated ESOL classes. Many of our international students have had wonderful successes at ACG Sunderland and I personally welcome your application."

– Nathan Villars, Principal

Chairman of the Association of Cambridge Schools in New Zealand (ACSNZ)

Exceptional learning with strong values

We deliver outstanding education and development opportunities in the classroom and beyond, and our strong pastoral care ensures all students are supported and nurtured.

Some of the ways we ensure this support:

- Allocating a buddy to all new Primary students
- Encouraging interaction across age levels through vertical form classes
- Providing a dedicated dean for international students
- A caring and supportive environment with mentoring at all year levels
- Our tutor system means each ACG Sunderland student has an allocated tutor
- Providing before-school and after-school care for children of all ages
- New Early Learning School being built late 2021
- Test centre Cambridge University and Oxford University

#1 Top academic school in West Auckland



Proximity to excellent sporting and cultural facilities



Dedicated school bus service



English language support

Student story

Receiving an offer from **Imperial College London** felt like hitting the jackpot for ACG Sunderland graduate Yiyang (Sherry) Wang. With her sights firmly set on an engineering career, it's the perfect pathway, and one that Yiyang believes ACG Sunderland has prepared her well for.

"I couldn't have achieved this without the indispensable support I received from ACG staff. My design and technology teacher Mrs Faumuina inspired me to take this direction, by making design and technology such an extraordinary subject. She gave up her spare time to tutor us and inspired us with her professional knowledge and skills. So many students in our year group have gone on to study design as a result of her classes."

– Yiyang (Sherry) Wang



Find out more

- 👉 sunderland.acgedu.com
- 📘 facebook.com/acgsunderland
- 📷 [@acgsunderland](https://instagram.com/acgsunderland)



Early Learning–Year 13

Excellent education in regional New Zealand

Away from city stress ACG Tauranga offers families the unbeatable combination of the best in education in a beautiful and relaxed part of the country.



In New Zealand's fastest-growing city, ACG Tauranga offers students the best of internationally recognised early learning-to-college education underpinned by strong family values.

A word from the principal

"At ACG Tauranga we provide a world-class education in one of the most beautiful and progressive cities in New Zealand. A truly inspiring and culturally authentic experience awaits you."

– Thea Kilian, Principal



Whole person education

ACG Tauranga is the only school in the region offering the Cambridge Pathway curriculum from primary through secondary, delivered by dedicated and passionate teachers.

Our students are at the heart of everything we do. We value each student as an individual and work hard to develop their unique strengths. Our personalised, holistic approach to learning inspires students to strive for excellence in all fields and work hard to realise their potential across a range of disciplines.

We offer:

- A tutor programme for mentoring, coaching and ongoing support through out the year
- A house system to encourage leadership, a strong school culture and sense of belonging
- A transition programme (including a buddy system) to help new students transition to school
- Strong communication channels allowing parents to feel connected to the school community
- A diverse range of sports and extracurricular activities
- Access to the latest in digital technology to keep students up to date with technological developments
- New college block being built late 2021
- 100% A-Level pass rate



Traditional school uniform



Strong sports and arts programmes



Cambridge Pathway curriculum at primary and secondary levels

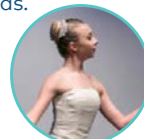


Extension classes and activities

Student story

Madeleine Limmer, Year 11, has been accepted to the University of North Carolina School of the Arts (UNSCA) High School dance programme. The programme is the exclusive educational affiliate school of the American Ballet Theatre, renowned for its esteemed alumni and industry connections.

"It has a strong academic curriculum and also teaches drama, visual arts, music and dance in preparation for university and careers in those fields."



Find out more

- 🖱 tauranga.acgedu.com
- 📘 facebook.com/acgtauranga
- 📷 [@acgtauranga](https://instagram.com/acgtauranga)



Accommodation

International students may choose to live with their parent(s) or a residential caregiver, but to get the most out of experiencing New Zealand life we encourage students to live with a family in New Zealand homestay accommodation.

Homestay

Homestay accommodation includes a room for the student with a bed, desk, adequate heating and internet access. Meals include breakfast and dinner Monday–Friday, and breakfast, lunch and dinner on Saturdays/Sundays/public and school holidays. Laundry is also included.

Homestay Plus families accommodate up to two international students at a time. A separate bathroom is available for the student(s).

- All accommodation arrangements are thoroughly checked – each homestay family is interviewed and the home inspected to our satisfaction before we arrange a student placement
- All homestay providers sign a contract agreeing to specific rules and standards and undergo a vetting procedure by New Zealand Police
- All students under 18 are visited in their accommodation a minimum of three times per year by homestay staff
- All payments are made to the homestay provider by ACG Schools

Homestay fees

Homestay fees are weekly rates. Additional days are charged at one-seventh the weekly rate.

ACG Parnell College

Students under 18	NZ\$340 per week* (Homestay Plus NZ\$375 per week*)
Students 18 and over	NZ\$325 per week (Homestay Plus NZ\$365 per week)

ACG Strathallan, ACG Sunderland and ACG Tauranga

Students under 18	NZ\$320 per week* (Homestay Plus NZ\$355 per week*)
Students 18 and over	NZ\$305 per week (Homestay Plus NZ\$340 per week)

**Includes a weekly charge for compliance services*

Additional fees (where applicable)

Accommodation Placement Fee*	NZ\$300
Under 18 Accommodation Guarantee and Services Fee**	NZ\$780 per year
Change of Homestay Fee+	NZ\$100 per change
Holiday retainer rate~	NZ\$130 per week
Airport transfer within Auckland (from Auckland International Airport), or airport transfer within Tauranga (from Tauranga Airport)	NZ\$110
Lunches (if not supplied by homestay)	NZ\$60 per week

**Fee charged only where ACG arranges student accommodation*

***Fee charged where a student under 18 lives with a homestay provider arranged by parent(s), student, or their representative, allowing for accommodation to be checked once per term to ensure Code of Practice requirements are being met*

+Fee applies only when a student requests a change of homestay for reasons deemed unacceptable, and/or for a student who frequently changes homestays (fee charged at discretion of Registrar)

~Weekly rate charged (instead of homestay rate) when homestay host retains room/belongings for student during holidays

Homestay accommodation and holidays

Note that students under 18 are expected to return home to their parents/legal guardians for the duration of the New Zealand summer school holidays (December–January) and/or for periods greater than two weeks.

Student Apartments

Student apartments are available in Central Auckland for students aged 18 years and older who seek independent living with a full range of facilities. All apartments are self catering.

Details available on request.



Future outcomes

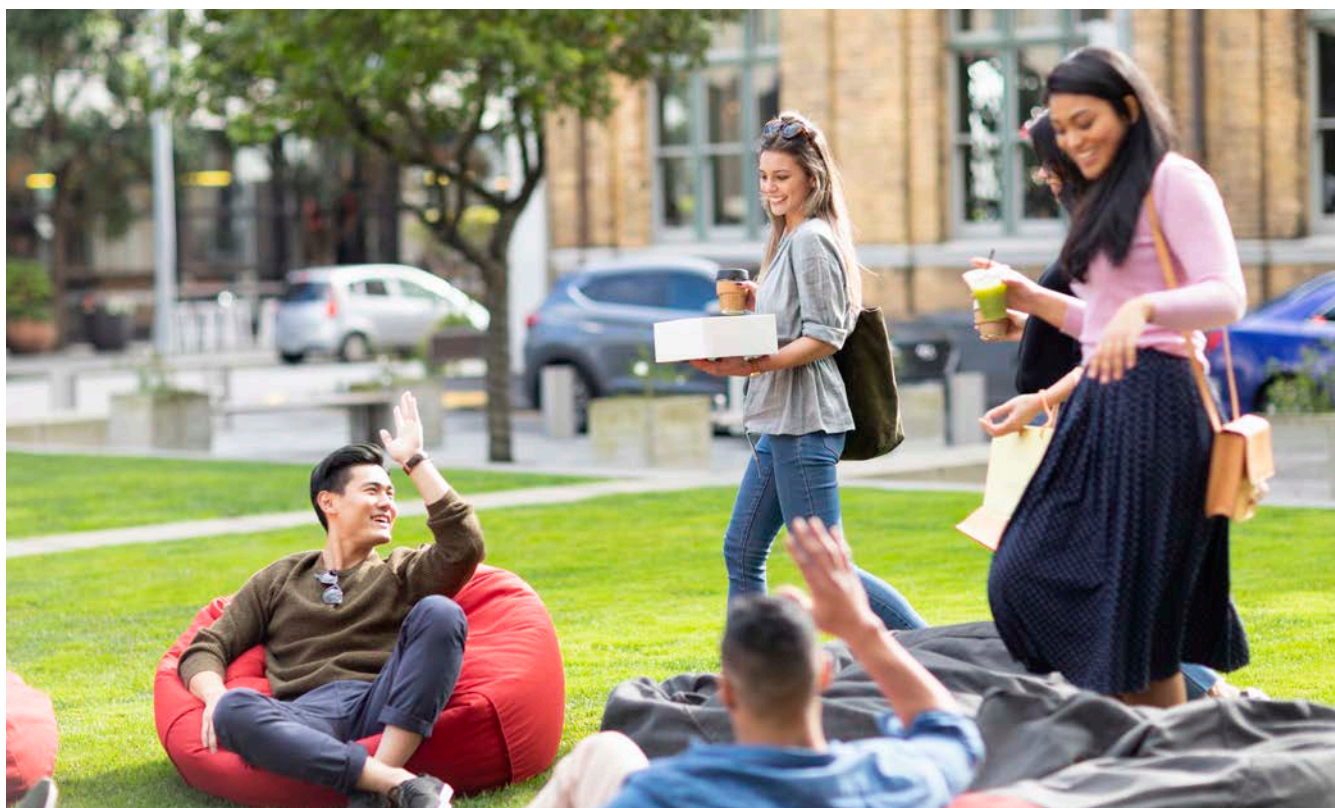
University pathways

We schedule regular catch-ups with senior students to discuss university pathway options. We liaise with national and international universities and arrange for their representatives to visit our schools, and we also encourage our students to participate in organised university visits.

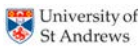
Our schools hold parent evenings in the first term of the year to explain the university application process. Parents may also contact us directly during the year with additional questions or concerns.

ACG Schools staff provide individual guidance to students and assist them in applying for scholarships and completing application forms. ACG Schools also has a dedicated University Adviser, who ensures our students are kept up to date with the constantly changing entry requirements to the best universities in the world.

Parents and students gain access to the ACG University Advice website. The site answers questions such as "What do I need to do to get into Stanford" "How do I write a Personal Statement" "What's the difference between the SAT and the ACT".



The following universities are just some of the institutions where ACG Schools graduates have been accepted:



2021 International student fees

Tuition fees

ACG Parnell College

Years 1–6 (students aged 5–10)	NZ\$26,800
Years 7–10 (students aged 11–15)	NZ\$31,800
Years 11–13 (students aged 15 and over)	NZ\$37,600

ACG Strathallan

Years 1–6 (students aged 5–10)	NZ\$24,400
Years 7–13 (students aged 11 and over)	NZ\$29,800

ACG Sunderland

Years 1–6 (students aged 5–10)	NZ\$21,900
Years 7–13 (students aged 11 and over)	NZ\$27,800

ACG Tauranga

Years 1–6 (students aged 5–10)	NZ\$23,200
Years 7–13 (students aged 11 and over)	NZ\$27,500

Subject fees (Note: Subject fees are approximate and payable on completion of enrolment)

Cambridge (IGCSE and A Level)	
Subject course fees (per subject)	NZ\$25–750
Subject exam fees (per subject)	NZ\$140–600
Painting	NZ\$200–600
IGCSE Art & Design	NZ\$200
Photography	NZ\$400
Geography (field trips)	NZ\$25–250
Physical Education (Year 11)	NZ\$80–120
Physical Education (Years 12 and 13)	NZ\$350
Optional extracurricular sports fees	up to NZ\$800 per year

ACG Parnell College	
IB – Examination entry fee	NZ\$1,600
IB – Online course fee (Pamoja)	NZ\$1,300
IB – Visual arts materials	NZ\$550
IB – Textbooks (per subject)	NZ\$200
Design	NZ\$450–750
Physical Education – induction camp	NZ\$150–400
Physical Education – AS and A2 camp	NZ\$150–500
Student diary	NZ\$20
ID card	NZ\$12
CAS activities	NZ\$400

ACG Strathallan	
A2 Accounting (field trip)	NZ\$200–300
A2 Economics (field trip)	NZ\$200–300
Outdoor Education camp (Years 7 and 10)	NZ\$750

ACG Sunderland	
Outdoor Education (Years 7 and 13)	NZ\$150–480

ACG Tauranga	
IGCSE Physical Education	NZ\$650
BYOD (Bring Your Own Device) fee	NZ\$100

Additional school fees

Administration fee (yearly)	NZ\$1,050
Textbooks (yearly)	NZ\$200–600
Uniform (depends on school)	NZ\$400–1,600
Public transport to and from school (weekly)	NZ\$25–80
School bus service (weekly)	NZ\$50–100

Other fees

Registration fee	NZ\$370
Airport greeting and transfer fee (one way, per person).....	NZ\$110
Auckland International Airport transfer between terminals.....	NZ\$ 80
Medical and travel insurance* (15 months)	NZ\$791

**International students are required to have comprehensive medical and travel insurance while in New Zealand. ACG will arrange cover for students through the Southern Cross International Student travel insurance policy to cover the duration of the student visa. For full details, visit: scti.co.nz/international-student*

Note: The New Zealand Government has imposed an international student levy on tuition and course-related fees. The levy is currently set at 0.5% of the compulsory tuition fees. All fees include Goods and Services Tax (GST) where applicable. This is a New Zealand Government tax payable on the supply of goods and services.

Entry requirements

English language

Students who speak English as a second language need to demonstrate their English language proficiency.

ACG Parnell College, ACG Strathallan, ACG Sunderland, ACG Tauranga

Years 1–6	Preferably some prior exposure to English
Years 7–13	Exposure to English is a requirement. Students are tested on arrival and placed in a programme of study that matches their English level and academic ability. Students may be asked to sit an online English test to highlight any gaps in their prior learning before an offer of place is sent. Please note, students are not required to present an IELTS score.

Scholarships

ACG Schools welcomes scholarship applications from students with a strong academic background in their current school and who are eager to make a positive contribution to their ACG school. Partial tuition scholarships are available – contact ACG Schools for information on how to apply. Students are selected following submission of their application and personal letter of support, and an interview.

Start dates

Students are welcome to apply for entry into ACG school programmes throughout the year.

2021 term dates

Term 1: Monday 25 January**–Friday 16 April
Term 2: Monday 3 May–Friday 2 July
Term 3: Monday 26 July–Friday 1 October
Term 4: Monday 18 October–Friday 7 December

2022 term dates

Term 1: Wednesday 26 January*–Thursday 14 April
Term 2: Monday 2 May–Friday 1 July
Term 3: Monday 25 July–Friday 30 September
Term 4: Monday 17 October–Tuesday 6 December

***New International students to start on 21 January for Orientation *New International students to start on 24 January for Orientation*

Code of Practice

ACG Schools is a signatory to the Education (Pastoral Care of International Students) Code of Practice 2016 (the Code). Published by the New Zealand Ministry of Education and administered by the New Zealand Qualifications Authority (NZQA), the Code is designed to ensure international students are well informed, safe and properly cared for. Read more about the Code, and ACG School's obligations, at: nzqa.govt.nz/the-code

How to apply



Step 1 – Application

Student submits:

- completed application form
- copy of most recent school report, or other qualification(s)
- colour copy of passport
- documentation confirming English language proficiency

ACG Admissions:

- Receive and review application
- Email Offers of Place and Schedule of Fees



Step 2 – Enrolment

Student:

- Pays all fees
- Sends completed Enrolment Acceptance form and Acknowledgment form
- Sends subject requests (if applicable)

ACG Admissions:

- Issue receipt and confirmation letter
- Issue Code of Practice-compliant accommodation confirmation (for students under 18 for student visa application)



Step 3 – Completion

Student:

- Applies for student visa
- Informs ACG of flight details

ACG Admissions:

- Arrange accommodation (if requested)
- Organise airport greeting and transfer (if requested)

Find out more

Contact us: admissions@acgedu.com

You may also find the following websites helpful:

acgedu.com

enz.govt.nz



All enquiries and applications to:
ACG Schools

PO Box, Victoria Street West, Auckland 1142, New Zealand
T +64-9-306-0440 | E admissions@acgedu.com | W acgedu.com

Every effort was made to present accurate information in this publication at the time of printing (January 2021). ACG Schools reserves the right to change information without notice where this is considered necessary or desirable.

An **inspired** school

Follow us on WeChat

