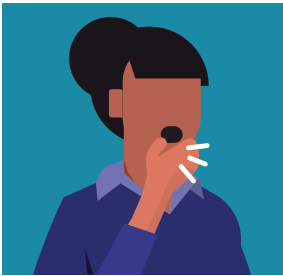


Symptoms of Coronavirus (COVID-19)

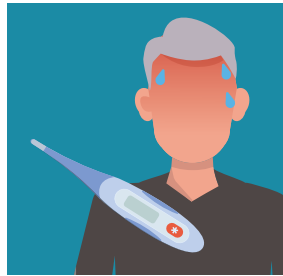
Seek medical care immediately if someone has emergency warning signs of COVID-19.

- Trouble breathing
- Persistent pain or pressure in the chest
- New confusion
- Inability to wake up or stay awake
- Bluish lips or face

Know the symptoms of COVID-19, which can include the following:



Cough, shortness of breath or difficulty breathing



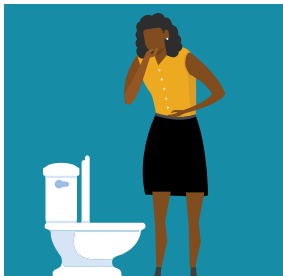
Fever or chills



Headache



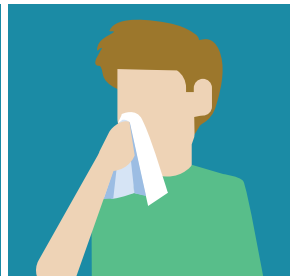
Muscle or body aches



Vomiting or diarrhea



Loss of taste or smell



Runny nose

Symptoms can range from mild to severe illness, and appear 2-14 days after you are exposed to the virus that causes COVID-19.

This does not list all possible symptoms. Please call your doctor at Eisner Health for any other symptoms that are concerning to you.

Helpful Numbers:

Eisner Health: (213) 747-5542

Call for appointments or to speak to a case manager who will help connect you to other resources, such as food, housing, older adult supports, etc..

LA County Information Line: 211

Additional support line for essential community services and information

California Covid-19 Information Line: (833) 544-2374



 eisnerhealth.org

 [@EisnerHealth](https://www.facebook.com/EisnerHealth)

 [@eisner_health](https://www.instagram.com/eisner_health)