

THE TORCH

✦ 1946 ✦

Safe
LD1741
.E57
Y4
1946
c.2

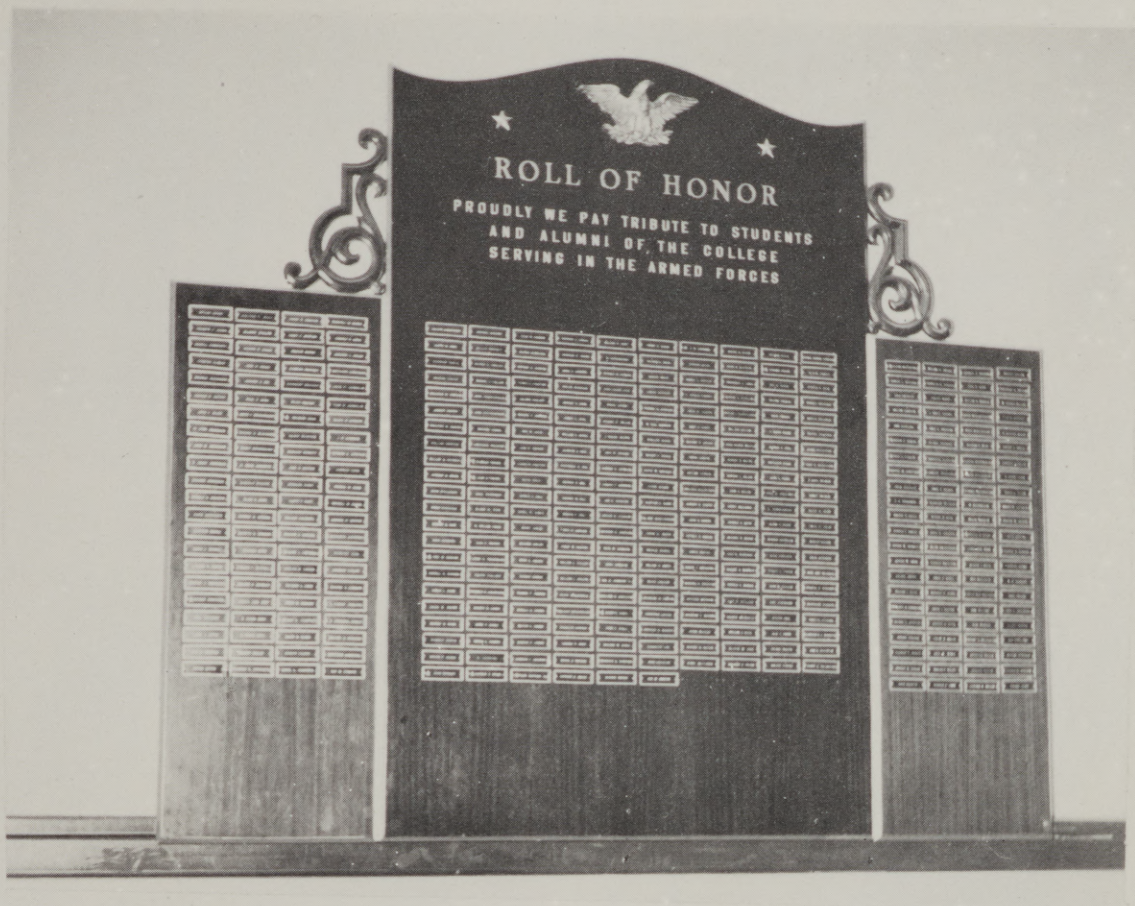




The TOME







Dedication

TO THE MEN AND WOMEN OF EASTERN OREGON COLLEGE WHOSE NAMES ARE WRITTEN IN GOLD UPON HER HEART AND WHOSE SPIRITS YET LINGER WITHIN HER HALLS, "THE TORCH" IS GRATEFULLY DEDICATED.





The Torch Staff

Editor

Hazel Trollinger

Co-Editors

Carol Banish

Steve Kinzel

Business Manager

Derrell Lindsay

Art Editor

Ramona Davidson

Photography

George Blake

Journalism

Virginia Rivers

Sales Manager

Norma Newton

Advertising

Ross Hearing

Jack Jenkins

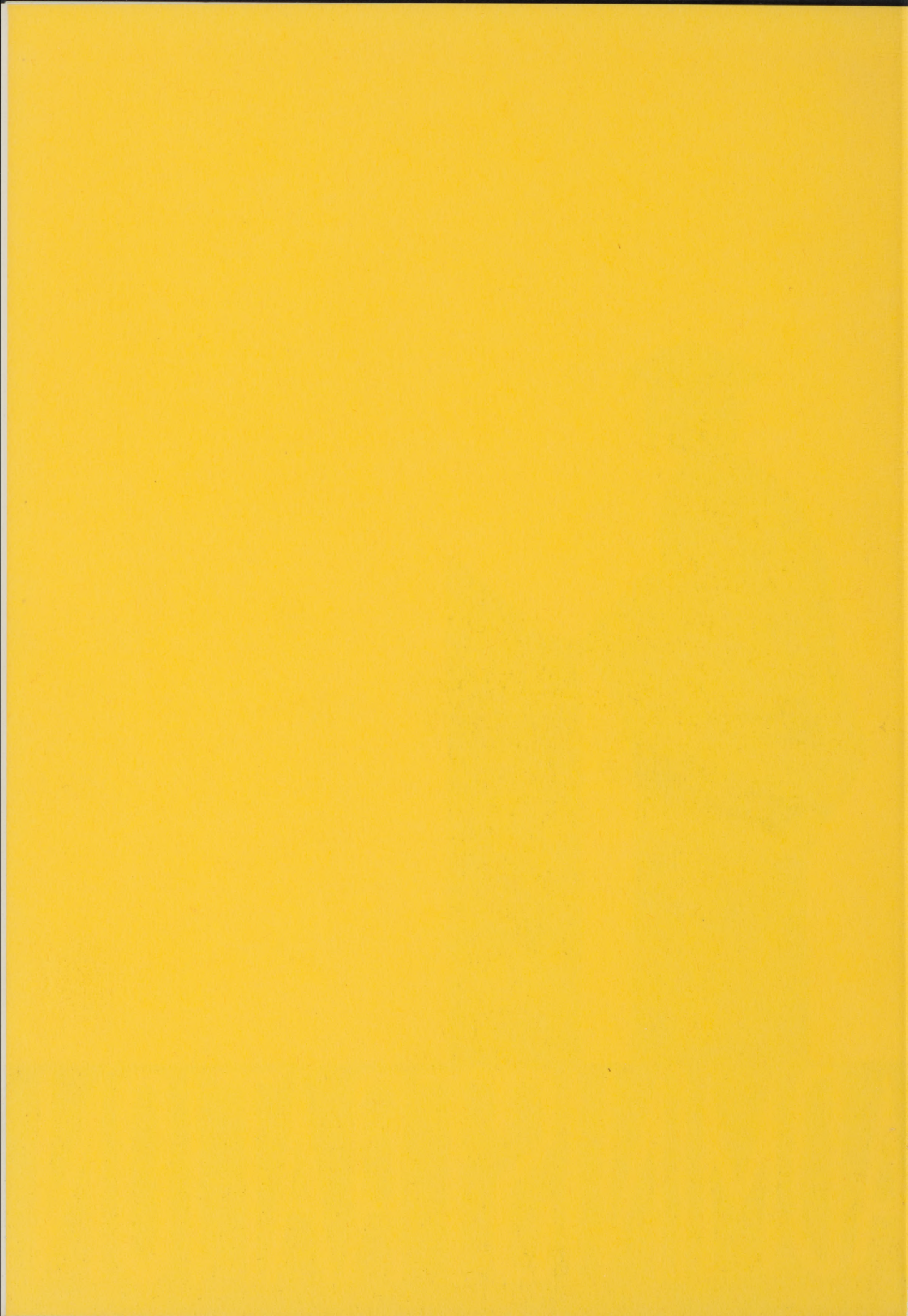
Faculty Advisors

Carlos Easley

George Nightingale



ADMINISTRATION





PRESIDENT ROBEN J. MAASKE

PRESIDENT'S MESSAGE

This year's *The Torch* marks the resumption of an annual at Eastern Oregon College of Education. It is a significant tribute to the college student body that it has been undertaken so successfully.

Since the publication of the last annual several years ago, many improvements have taken place at the college. New curricula have been added. The faculty has been strengthened. The enrollment is near the pre-war year of 1940-41. *The Torch* is emblematic of the light which shall lead the college to an ever brighter future.

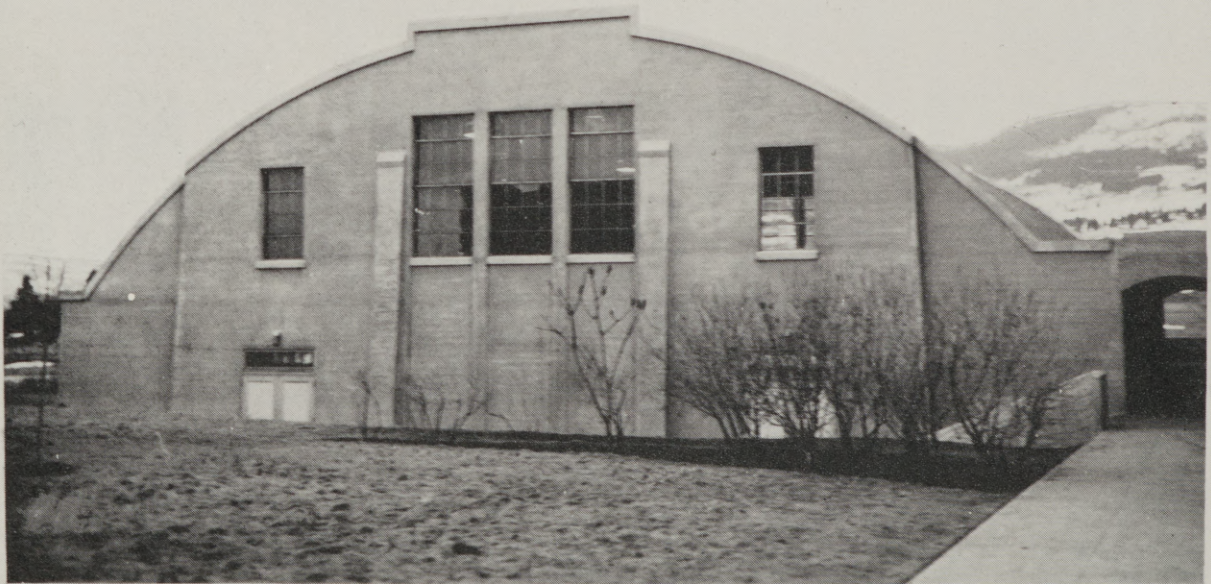
ROBEN J. MAASKE.



THE ADMINISTRATION BUILDING, Eastern Oregon College of Education



THE J. H. ACKERMAN CAMPUS ELEMENTARY SCHOOL
where practice teaching is done under approved conditions



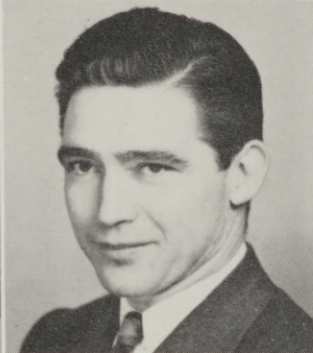
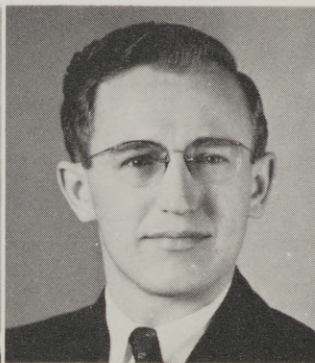
EASTERN OREGON COLLEGE GYMNASIUM



Top Picture:
DORION HALL — Dorion Hall is the residence for women on the campus. The hall was built in 1939 and accommodates approximately eighty girls.

Lower Picture:
EOCENE COURT — At the beginning of the winter term, Eocene Courts were made available to returned veteran students and their families. The courts are a Federal Housing Project constructed by the government and maintained and operated by the college. Superintendency is under the direction of Mr. and Mrs. Forrest Hatmaker.

Faculty



AGER, LEWA, M. D.
College Physician

BYRD, DOROTHY, B. S.
Instructor in English and Literature

HARRIS, ELIZABETH, M. A.
Assistant Professor of Education

JOHNSON, LYLE, Ed. M.
Registrar

BADGLEY, ESTHER, M. A.
Instructor in Chemistry

EASLEY, CARLOS, B. A.
Instructor in Radio-Electric Service

HAWKINSON, MABEL, M. A.
Instructor in Education

BADGLEY, RALPH, M. A.
Associate Professor of Science

EHLERS, HENRY, Ph. D.
Assistant Professor of Music

HILL, FLOYD, M. Ed.
Instructor in Education

BAER, WILMER, B. S. S.
Business Manager

GAISER, JOSEPH, Ph. D.
Associate Professor of Social Science

JOHNSON, ALPHA, B. A.
Coordinator of Nursing Education

Faculty



KAISER, ALVIN, M. A.
*Assistant Professor of English
and Dramatics*

MOREHEAD, ALICE, R. N.
Supervisor of Health Service

QUINN, ROBERT, M. S.
*Assistant Professor of Physical
Education and Geography*

KUHLMAN, RUTH, M. S.
Instructor in Education

NIGHTINGALE, MARIAN, M.S.
*Instructor in Physical
Education*

SISTER M. ALEXIS
KIRSCH, B. S.
Instructor in Nursing

Not Pictured: DARBY, EDITH
WEAR, EVA

LAWRENCE, ARTA, M. A.
*Associate Professor of
Education*

NIGHTINGALE, GEO., M. A.
Instructor in Art

SKEEN, ROY, M. A.
*Associate Professor of
Psychology*

MILLER, JOHN, M. A.
*Associate Professor of
Education*

QUAINTANCE, CHAS., Ph. D.
Assistant Professor of Biology

STERNE, LUCAS, Ph. D.
*Assistant Professor of Secre-
tarial Science*

THOMPSON, LUCILLE, B.S.S.
Secretary to the President

Student Body Officers



PRESIDENT—
BILL DITTRICH



VICE-PRESIDENT—
IDA McCULLOUGH



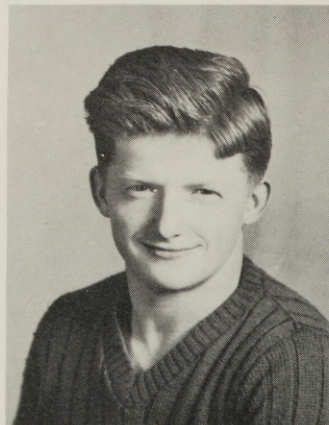
SECRETARY—
MARJORIE CHANDLER



BUSINESS MANAGER—
DAVID ESHELMAN



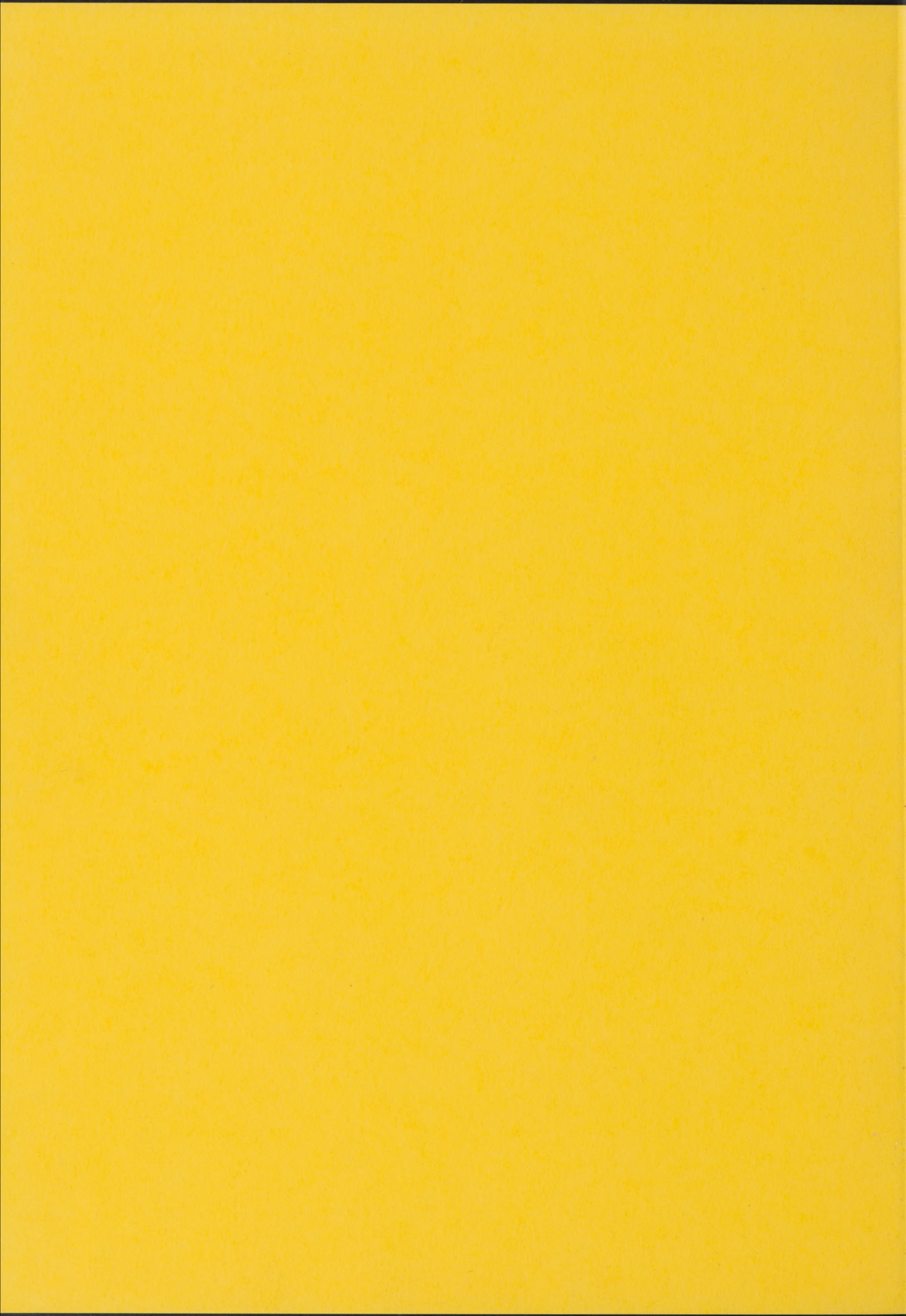
SONG QUEEN—
NORMA NEWTON



YELL KING—
DALE FALLOW



CLASSES



Bachelor of Science Degree

BABCOCK, ROY — *"La Grande's Barrymore?"*

Men's Club 1-2-3-4; Theta Delta Phi 2-3-4; Phi Beta Sigma 1-2-3-4; Sock and Buskin 1-2-3-4; Future Teachers of America 4; Campus Schoolmasters' Club 2; President Sock and Buskin 2; President Phi Beta Sigma 2; President Future Teachers of America 4; Vice-President Campus Schoolmasters' Club 2.

BERKEY, WYLLAMINE — *"Musically Minded."*

A. W. S. 1-2-3-4; Choir 1-2-3.

CAVANAUGH, LEONE — *"If it weren't for studying, I'd enjoy going to school."*

A. W. S. 1-2-3-4; Phi Beta Sigma 3-4; Alpha Rho Tau 4; Assoc. of Childhood Ed. 1-2-3-4; Sock and Buskin 1-2-3-4, (Sec'y 2, V.-Pres. 4); International Relations Club 2-3-4, (V.-Pres., Treas.); President Senior Class; Social Chairman Junior Class; Vice-President A. W. S. 3; Treasurer Phi Beta Sigma 4; Beacon 2-3; Choir 2-3-4; Who's Who in Colleges 3.

DAVIDSON, RAMONA — *"Worth her weight in gold."*

A. W. S. 1-2-3-4; Alpha Rho Tau 1-2-3-4; Assoc. of Childhood Ed. 4; Sock and Buskin 1-2; College Christian Fellowship 4; International Relations Club 3; Future Teachers of America 4; Welcoming Comm., Homecoming 4; Beacon 1-2; The Torch 4; Pres. Assoc. Childhood Ed. 4; President Alpha Rho Tau 4; Vice-President Senior Class; Secretary Student Body 2; Student Council Member 4.

JENKINS, JACK — *"Oh, for those curly locks—again!"*

Men's Club 2-3-4; Lettermen's Club 2-3-4; Association of Childhood Education 3-4; International Relations Club 3; Future Teachers of America 3-4; Student Council Member 4; President Lettermen's Club 3; Business Manager Beacon, 2-3-4.

KEENEY, GLADYS — *"Quiet and studious."*

A. W. S. 1-2-3-4.

PRUDHOMME, FRANYA — *"Modern art is her hobby."*

A. W. S. 1-2-3-4; Phi Beta Sigma 3; Sigma Alpha Chi 3; Alpha Rho Tau 3-4.

WEATHERSPOON, HENRY — *"Talk, talk, talk—will he never stop?"*

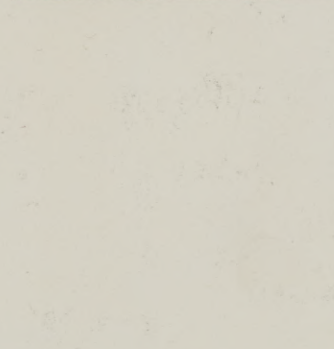
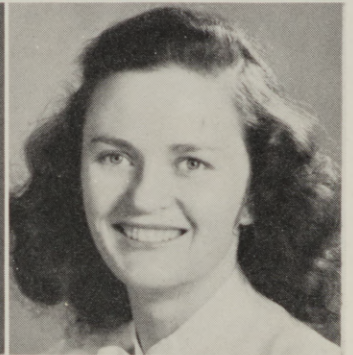
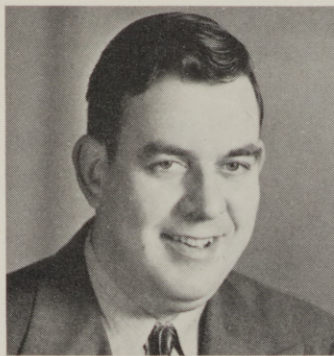
Men's Club 1-2-3-4; Alpha Rho Tau 4; Phi Beta Sigma 4; Vice-President Alpha Rho Tau 4.

WILSON, TED — *"Pilot, navigator, and bombardier."*

Men's Club 1-2-3-4; Lettermen's Club 1-2-3-4; Future Teachers of America 4; President Student Body 3; Student Council member 1; President Lettermen's Club 4; Member Finance Committee 3.

Not Pictured:

MAYBERRY, LOIS
McGREW, FANNIE
ROSTOCK, ERNEST
SMITH, ARTHUR



Three-Year Teacher Training

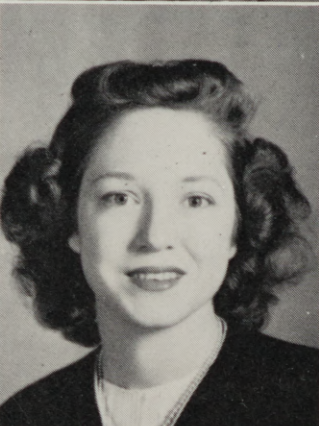


GOLAY, BESSIE — *"Quiet, unruffled, and always the same."*

A. W. S. 1-2-3; Sigma Alpha Chi; President Junior Class.

LEE, HELEN — *"Quietly she walks among us."*

A. W. S. 1-2-3; Phi Beta Sigma 3; Alpha Rho Tau 2-3; Association of Childhood Education 3; College Christian Fellowship 3; Future Teachers of America 3; Vice-President Junior Class; Secretary-Treasurer Junior Class; Recorder Alpha Rho Tau 3; Secretary-Treasurer Future Teachers of America 3.

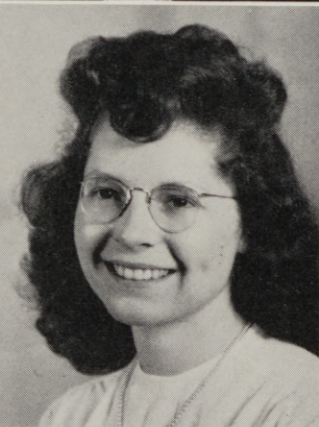


MAPES, PATRICIA — *"She wears a diamond!"*

A. W. S. 3-4; Alpha Rho Tau 3-4; Association of Childhood Education 4; Future Teachers of America 4; Choir 4.

MASON, HELEN — *"Nice to look at, nice to know."*

A. W. S. 3-4; Sigma Alpha Chi 3; Phi Beta Sigma 3; Alpha Rho Tau 2-3; Association of Childhood Education 1-2-3; College Christian Council 1; Beacon 1; Choir 1-2-3; Social Committee 1; Assembly Committee 1; Vice-President Association of Childhood Education 3; President Phi Beta Sigma 3; Social Chairman A. W. S. 1.



SOMMERER, MARY — *"Always ready with a friendly smile."*

A. W. S. 1-2-3; Sigma Alpha Chi 3; Phi Beta Sigma 2-3; Alpha Rho Tau 2-3; Association of Childhood Education 2-3; International Relations Club 2; College Christian Fellowship 3; Future Teachers of America 3; College Christian Council 3; Who's Who Among College Students 3; Choir 1; Secretary Alpha Rho Tau 3; Vice-President Phi Beta Sigma 3; Librarian Future Teachers of America 3.

TUCKER, NADINE — *"A friend to everyone"*

A. W. S. 2-3; Phi Beta Sigma 3; Alpha Rho Tau 3; Association of Childhood Education 3; College Christian Fellowship 3; Student Body Council Member 3; Who's Who in Colleges 3.

Junior College



CHADWICK, BERNEVA — *"Recognized by her ability to talk."*

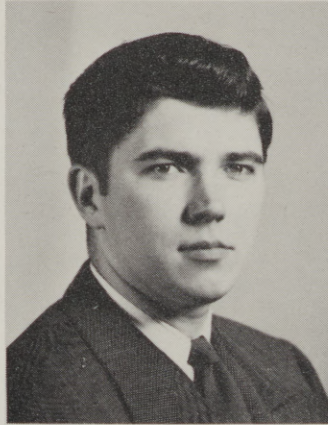
A. W. S. 1-2; Commercial Club 1-2; Choir 1.

CHANDLER, MARJORIE — *"She makes many friends by being one."*

A. W. S. 1-2; Sigma Alpha Chi 1-2; Sock and Buskin 1-2; Commercial Club 1-2; Alpha Pi Epsilon 2; Secretary Student Body 2; Secretary Sigma Alpha Chi 2; Beacon 1-2; Choir 1; Orchestra 1-2; Welcoming Committee Homecoming 2.

DITTRICH, WILLIAM — *"Greater men may have lived, but I doubt it!"*

Men's Club 1-2-3; College Christian Fellowship 3; International Relations Club 2; Choir 1-2-3; Orchestra 3; College Mixed Quartet 3; President Student Body 3.

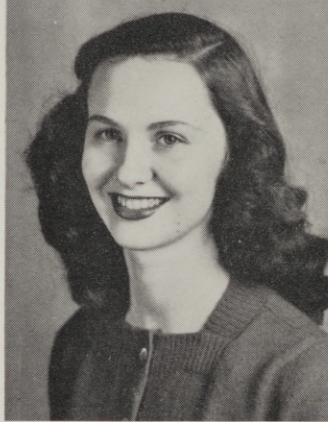


FLANERY, KENNETH — *"There surely must be some work in him, for none ever came out."*

Men's Club 1-2.

FRAZIER, JO ANNE — *"Where there's a man in the case, all else gives place."*

A. W. S. 1-2; Alpha Rho Tau 2; Sock and Buskin 2; Choir 1-2.



HAYES, ELENOR — *"She has a way with men."*

A. W. S. 1-2; Sigma Alpha Chi 2; Choir 1-2.

HEARING, ROSS — *"He finishes what he begins."*

Men's Club 1-2; President Student Body 2; Sock and Buskin 1-2.

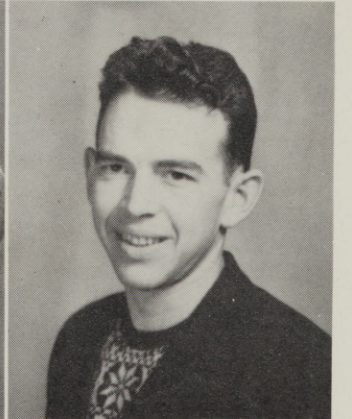


HEIMBURGER, HARRIET — *"If she isn't studying, it's because there are no more books."*

A. W. S. 2.

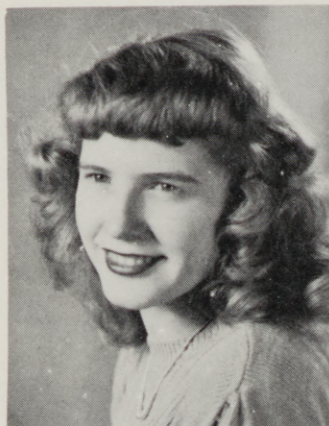
HOWARD, IRYS — *"I can't hear — I left my glasses at home."*

A. W. S. 1-2; Women's Athletic Association 2; Choir 1-2; The Torch 2; Assembly Committee 2.



JONES, JOHN — *"In his own way he gets along with the best of them."*

Men's Club 1-2; Lettermen's Club 1-2.



KING, MARILYN — *"Anything's worth attempting."*

A. W. S. 1-2; Choir 1-2; Sigma Alpha Chi 2; Women's Athletic Association 1-2; Sock and Buskin 1-2; Alpha Psi Omega 2.

KINZEL, STEVE — *"If size is quality, he's got it."*

Men's Club 1-2; Commercial Club 2; The Torch 2; Student Body Council Member 2; Student Body Business Manager 1.



KOPP, NINA — *"She has a big heart, but we doubt if it's all her own."*

A. W. S. 1-2; Sock and Buskin 2; The Torch 2; Choir 1-2; Orchestra 1-2; Assembly Committee 2.

LLOYD, LILA — *"Does anyone have any news for the Beacon?"*

A. W. S. 1-2; Beacon 1-2.

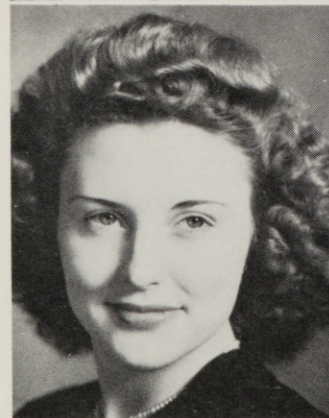


RODE, JEAN — *"The pen is mightier than the sword."*

A. W. S. 1-2; Sigma Alpha Chi 1-2.

SHAW, MARGARET — *"I'll never believe a madman until I see his brains."*

A. W. S. 1-2; Choir 1-2.



SHEPHERD, LOIS JEANNE — *"When WILL that ensign get here?"*

A. W. S. 1-2; Sigma Alpha Chi 2; Commercial Club 2.

TROLLINGER, HAZEL — *"Where there's a will there's a way!"*

A. W. S. 1-2; Sigma Alpha Chi 1-2; Sock and Buskin 1-2; Commercial Club 1-2; Alpha Pi Epsilon 2; Alpha Psi Omega 2; Social Committee 2; Assembly Committee 2; President Sock and Buskin 2; Vice-President Sigma Alpha Chi; Editor The Torch 2; Choir 1.

TRUMP, IRENE — *"You can never call her noisy."*
A. W. S. 2.

WESTENSKOW, JUANITA — *"Hubba, hubba!"*

A. W. S. 1-2; Sigma Alpha Chi 1-2; Commercial Club 1-2; Alpha Pi Epsilon 2; Secretary-Treasurer Alpha Pi Epsilon 2; Choir 1.



WOODWARD, RAY — *"His studies interfere with his college work."*
Men's Club 1-2; Sock and Buskin 1-2; Choir 2.

HOOVER, JUNE — *"Her Quietness is deceiving."*

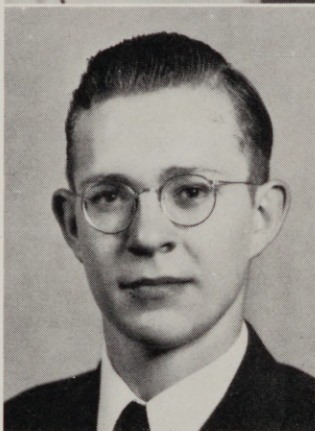
MEDICAL-DENTAL GRADUATE

A. W. S. 1-2; Sigma Alpha Chi 2.

Not Pictured:

DAY, C. VANCE

HARGETT, EUGENE



Secretarial Science Graduates

BEESON, FLORINA — *"Life is worth living, if you live it right."*
A.W.S.1-2; Commercial Club 1-2; President Alpha Pi Epsilon 2.

KOFFORD, BETH — *"She has the original giggle bug."*

A. W. S. 1; Sigma Alpha Chi 2; President Women's Athletic Association 2; Commercial Club 1-2.



NEWTSON, NORMA — *"Long, lean, and thin."*

A. W. S. 1-2; Women's Athletic Association 1-2; Commercial Club 1-2; College Christian Council 1-2; Song Queen 2; The Torch 2; Beacon 1; Choir 1-2; Publicity Manager Commercial Club 2; Publicity Manager Women's Athletic Association 2.

SMITH, NORMA — *"Her aim in life is Golden."*

A. W. S. 1-2; Sigma Alpha Chi 1-2; Commercial Club 1-2; President Commercial Club 2; College Christian Fellowship 2; Alpha Pi Epsilon 2; President College Christian Council 2.



Not Pictured:

CHADWICK, BERNEVA
CHANDLER, MARJORIE

TROLLINGER, HAZEL
WESTENSKOW, JUANITA

Cadet Nurse Corps - December Graduates



BELL, DORIS — *"An intellectual Miss."*

Associated Women Students 1; Sigma Alpha Chi 1.



BORCHER, JUNE — *"She knew her way around."*

Assoc. Women Students 1; Dorion Council Member 1.



CAMPBELL, ELMA — *"Cute and blonde"*

Associated Women Students 1.



COOPER, BARBARA — *"Piano player from 'way back."*

Associated Women Students 1.



CROCKETT, EVA — *"Everybody likes her."*

Associated Women Students 1; Sigma Alpha Chi 1.



DEVLIN, DOROTHY — *"She did her bit."*

Assoc. Women Students 1; Student Council Mem. 1.



DYER, PHYLLIS — *"Never seen without Greenfield."*

Associated Women Students 1.



GREENFIELD, JEAN — *"Never seen without Dyer."*

Associated Women Students 1.

GULLICKSON, MARY ANN — *"Success attended her sweet ways."*

Associated Women Students 1.



HUCKABY, SHIRLEY — *"A disposition to be envied."*

Associated Women Students 1.



IANZITI, MARY ANN — *"How she does get around."*

Associated Women Students 1.



JETTE, JEAN — *"Worry and I have never met."*

Associated Women Students 1; Sigma Alpha Chi 1.

KNUTH, BETTY — *"Our Canadian nurse."*

Associated Women Students 1; Sigma Alpha Chi 1.



LEWIS, BETTY — *"Pint size."*

Associated Women Students 1.

MAHON, HELEN — *"A mind of her own."*

Associated Women Students 1; Sigma Alpha Chi 1.

McGEE, MARY — *"Red."*

Associated Women Students 1.



NOFSINGER, MAXINE — *"One of E. O. C. E.'s nicer nurses."*
Associated Women Students 1.

PICKLES, MARIAN — *"E. O. C. E.'s Florence Night-
ingale"*
Associated Women Students 1.



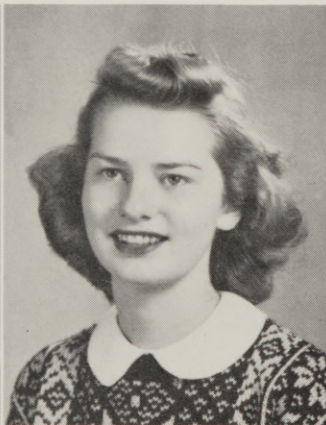
SHARP, LEANNA — *"Good qualities speak for themselves."*
Associated Women Students 1.

SNADER, JEAN — *"A conscientious worker."*
Associated Women Students 1.

Not Pictured:

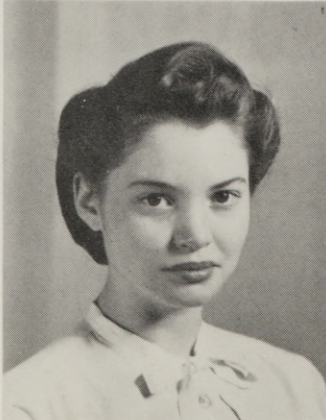
ALLEN, BARBARA
SHELTON, PEARL

Cadet Nurse Corps - May Graduates



BELSHAW, MARY ANN — *"What do you think?"*
Associated Women Students 1; Beacon 1.

BRANDT, CATHERINE — *"If a talent scout had only
seen her."*
Associated Women Students 1.



BROWN, PATRICIA — *"She weilds a mean scalpel in lab."*
Associated Women Students 1.

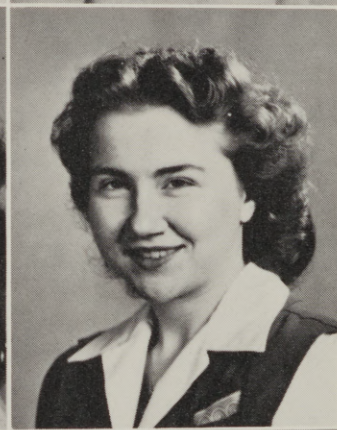
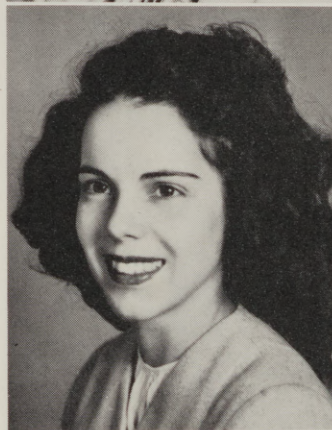
BURDICK, JOAN — *"Amelia Earhart the second."*
Associated Women Students 1; Choir 1.

CASKEY, PAULINE — *"Quiet when she wants to be."*
Associated Women Students 1.



DEATS, RETA MAE — *"She's one that will be missed."*
Associated Women Students 1.

DeCOURCEY, CASSIE — *"Waiting for the train to come in."*
A. W. S. 1; Secretary-Treasurer of Cadet Nurse Corps.



DOOLEY, DOROTHY — *"Whom could she be dreaming of?"*
Associated Women Students 1; Choir 1.

EBBESEN, ANNA MAY — *"My sailor sails the ocean blue."*
Associated Women Students 1.



FISHER, URSULA — *"patt, Patt, PATT!"*
Associated Women Students 1.

FORD, BETTE — *"Sometimes I sit and think, and sometimes I just sit."*
Associated Women Students 1.



GALLAGHER, ALICE — *"Hey, Irish!"*
Associated Women Students 1.



GOINS, DOROTHY — *"Will you do me a little favor?"*
Associated Women Students 1; College Christian Council 1.

HAILSTONE, IRIS — *"It's my lazy day."*
Associated Women Students 1.



HART, ADA MAE — *"Oh, my aching back!"*
Associated Women Students 1; Princess Sweetheart Ball 1.

HOLGATE, DOROTHY — *"Dependability is her quality."*
Associated Women Students 1.



JEWELL, BETTE — *"Her winning smile makes her always welcome."*
Associated Women Students 1.

LATHROP, ELF — *"She wears a diamond."*
Associated Women Students 1.



LATIMER, NORMA — *"Our own Veronica Lake."*
Associated Women Students 1; Choir 1.

McKINNEY, IRIS — *"Character is her sterling quality."*
Associated Women Students 1.

NEAL, AVA — *"One in a million."*

Associated Women Students 1; Social Committee 1.

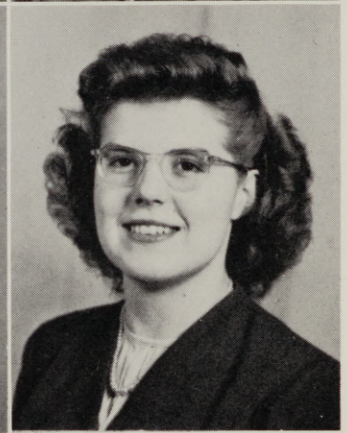


READ, DELORIS — *"United Airlines, here I come!"*

Associated Women Students 1.

RUSSELL, ALMA — *"Her determined efforts win her acclaim."*

Associated Women Students 1; College Christian Fellowship 1.



RYMAN, ANNA MAE — *"Her personality has won her many friends."*

Associated Women Students 1; Orchestra 1; Choir 1.

SANDER, MIRALYN — *"Little bright eyes."*

Associated Women Students 1.



SCHAFFER, BARBARA — *"Jovial and jolly."*

A. W. S. 1; Vice-President Cadet Nurse Corps 1.

SCHMIDT, VIVIAN — *"She has a kind word for everyone."*

Associated Women Students 1.



SHAEFFER, VIOLA — *"She knows a lot, but she doesn't dare tell it."*

Associated Women Students 1; Choir 1.



SHAW, RUTH — *"She's quiet."*
A. W. S. 1; Women's Athletic Association 1.

VECCHIO, MARY — *"I know nothing of war, but I like to be in arms."*
Associated Women Students 1.



WATSON, BERNICE —
"Another one of the quiet kind."
Associated Women Students 1.

WEATHERSPOON, HAZEL —
"She looks bashful, but . . ."
Associated Women Students 1.



WHITE, MARGARET —
"Vancouver, B. C., Canada."
Associated Women Students 1.

WHITTEN, KATHLEEN — *"She loves many, trusts few, and always paddles her own canoe."*
A. W. S. 1; Octette 1; College Christian Fellowship 1.



WILSON, OPAL —
"The good are always happy."
Associated Women Students 1.

YOUNGLAND, ALICE —
"She's got a sailor."
Associated Women Students 1.

Not Pictured:
ALLEN, GLORIA PHIPPS, MARY ANN
McCARTHY, PATRICIA SMITH, BARBARA
NOVAK, LORRAINE STEINER, FLORENCE
PEARSON, DONNA WILLIAMS, CAROLYN



Sophomores and Juniors

Some of the best things come in small packages, and so it was with the Junior class. They may have been small in number, but they were mighty in leadership.

One of the main events sponsored by this group was the Junior Prom, which was held this spring for the first time in three years. President of this group was Bessie Golay; Vice-President, Reita Murray; Secretary-Treasurer, Helen Lee.

The Sophomore class established themselves as a group of leaders during their first year, and that reputation was upheld during 1945-46. The outstanding event sponsored by this class was the Winter Mixer which was a masquerade.

Officers during this year were: President, Janette Frazier; Vice-President, Irene Van Beveren; Secretary-Treasurer, Dorothy Warren.



Freshmen Class

As seamen find their legs, as birds find their wings, so do Freshmen find their places at Eastern Oregon College. The first week may be somewhat hazardous due to Freshman initiation, but that is soon over, and students quickly adjust themselves to college life.

Each year the Freshman class plays a major roll in the social activities of the college, and this year's class was no exception. The Variety Show, put on during Fall term for Homecoming, the Halloween Party, and the Freshman dance are among the many activities sponsored by this class.

This year the Freshmen were led by Patt Knapp as President; Pat Rankin as Vice-President; and Doris Miller, Secretary-Treasurer.



Associated
Women
Students

Men's Club

Alpha Rho
Tau

Sigma Alpha
Chi

Sock ^{and} Buskin

Lettermen's
Club

Future Teachers
of America

College Christian
Coun.
Beaco

ORGANIZATIONS





Associated Women Students

Associated Women Students is an organization of which each girl becomes a member upon enrollment in Eastern Oregon College. The association is designed to encourage high ideals in character and social standards and to strengthen loyalty and cooperation among the women students.

Throughout the year various social activities are sponsored by the women students, outstanding of which are the Christmas Formal and the Coronation Ball. Also prominent is the Mothers' Day Tea.

Officers for the year 1945-46 were: Irene Van Beveren, president; Reita Murray, vice-president; Florina Beeson, secretary; and Elenor Hayes, treasurer.



Mey's Club

Each man, upon entering Eastern Oregon College, automatically becomes a member of the Men's Club.

During the Fall term the following officers were elected: President, Vernon Peterman; vice-president, Pat Rankin; and secretary-treasurer, George Blake. When Pat Rankin was called into service, Hobart Keeney was elected to fill the vacancy. Mr. Lyle Johnson is the faculty advisor.

The big event sponsored during the Winter term is the annual Whiskerino which lasts until the end of January. During this time all men are required to let their whiskers grow. The contest culminates in a dance at which prizes are awarded for the longest, shortest, blackest, and most unique beards.

During the year the club is asked to sponsor other activities such as assemblies, radio programs, and smokers.



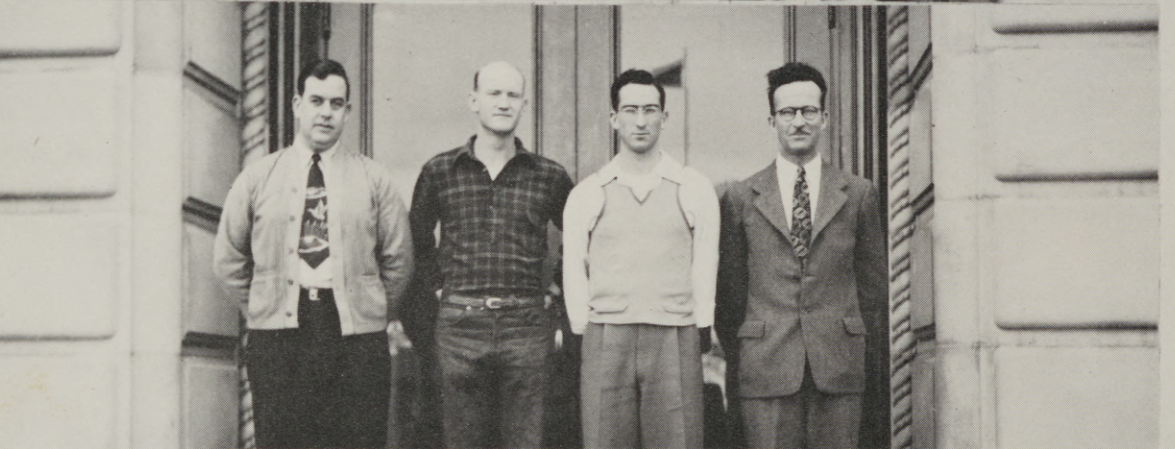
The A CAPPELLA CHOIR of Eastern Oregon College, under the direction of Dr. Henry J. Ehlers, presents a formal concert each term in addition to performing at various social functions. The choir this year consisted of approximately twenty men and fifty women.



DR. EHLERS

Another section of the Music Department is the ORCHESTRA. This group played for the nurses' graduation, at Sock and Buskin plays, and for the traditional Evensong. Some of the numbers used by the group were: "The Chocolate Soldier", "Two Guitars", and "Tales from the Vienna Woods".





ALPHA RHO TAU, art honorary society, elects to membership students in good standing who have attained an A or B grade in art for one quarter, students who present a major creative problem in art, or students who have a good cultural background in art. Members of this organization can always be counted on to put forth some original ideas on decorations for social functions. Officers this year were: President, Ramona Davidson; vice-president, Henry Weatherspoon; secretary-treasurer, Mary Sommerer; and recorder, Helen Lee. Faculty advisor is Mr. Nightingale.

ALPHA PI EPSILON is a new organization on the campus this year. The purpose of the organization is to promote high scholastic standing and an interest in commercial subjects. Newly elected officers are: Florina Beeson, president; Betty Graven, vice-president; and Juanita Westenskow, secretary-treasurer. Dr. Sterne and Mr. Baer are faculty advisors.

THETA DELTA PHI, men's honorary society, is being reorganized this year after a period of several years' inactivity. The four returning members are Roy Babcock, Quentin Bowman, Ross Hearing and Bob Kiddle. Dr. Gaiser is advisor for the group.



SIGMA ALPHA CHI is the women's honorary society of Eastern Oregon College. Membership is gained on the basis of high scholarship and character. Activities sponsored by this group include a luncheon for all alumna members during Homecoming and the Yule Candlelight Hour given the week before Christmas vacation. Officers this year were: Carol Banish, president; Hazel Trollinger, vice-president; Marjorie Chandler, secretary; and Miss Eva Wear, faculty advisor.

PHI BETA SIGMA is a national honorary educational fraternity. Membership is restricted to a small selected group who are interested in the work of education and who expect to engage in that work. Eastern Oregon College is fortunate in having the national secretary, Mr. John M. Miller, on its campus. Helen Mason is president of the group this year; Mary Sommerer, vice-president; Ida McCullough, secretary; and Leone Cavanaugh, treasurer. Mr. Miller is advisor.

ALPHA PSI OMEGA, national dramatics honorary, is again an active organization on the campus. The organization, whose purpose is to stimulate interest in dramatic activities, held an initiation in March at which time Marilyn King, Hazel Trollinger, David Eshelman, Roy Babcock, Leone Cavanaugh, and Mr. George Nightingale were pledged. Mr. Kaiser is advisor for the group.



WOMEN'S ATHLETIC ASSOCIATION carries on an active program of true sportsmanship, good fellowship, and wholesome recreational activities among the women of Eastern Oregon College. Any woman student who has earned one activity is eligible for membership. The officers serving the association in 1945-46 were: Beth Kofford, president; Irene Van Beveren, secretary; Pat Knotts, treasurer; and Norma Newton, publicity manager. Mrs. Nightingale is faculty advisor.

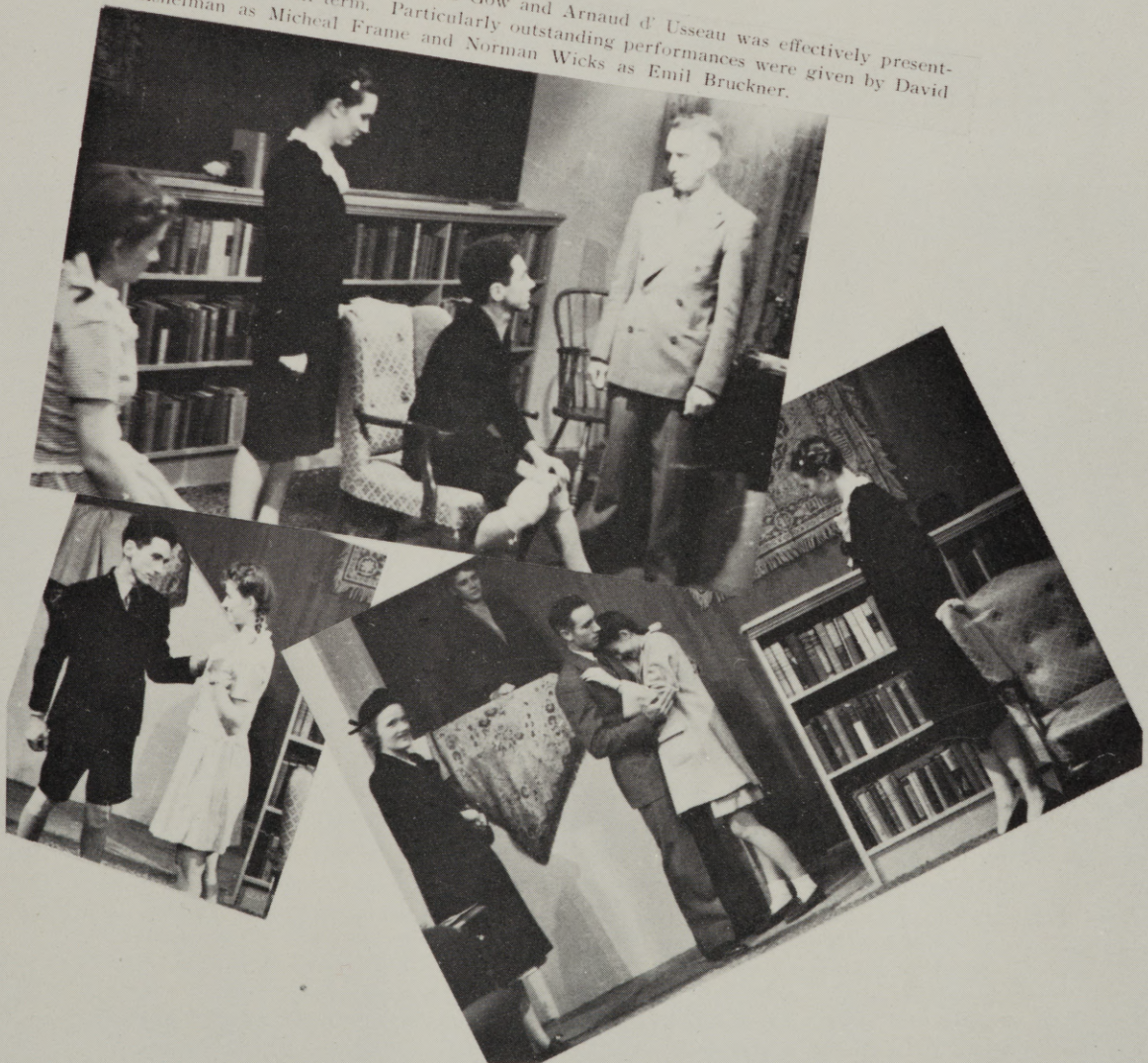


INTERNATIONAL RELATIONS CLUB this year has been occupied with questions of post war problems and international challenges. Subjects discussed by the club, both in its weekly meetings and in panel groups, were the United Nations Organization, the Far East and its problems, racial discrimination throughout the world, capital vs. labor, and the place of democratic institutions in the atomic age. David Eshelman is president of the group; Hobart Keeney, vice-president; Peggy Sommerer, secretary; and Dr. Gaiser, faculty advisor.



SOCK AND BUSKIN, college dramatic club, produces a full-length play for the general public each term of the college year. Students are admitted to the club for such work as scenic construction, acting, costuming, and business management.

"Tomorrow the World" by James Gow and Arnaud d' Usseau was effectively presented during the Fall term. Particularly outstanding performances were given by David Eshelman as Micheal Frame and Norman Wicks as Emil Bruckner.





COLLEGE CHRISTIAN COUNCIL is the executive board of the Christian Fellowship. Membership is composed of representatives from each denomination represented on the campus. Some of the group activities are fireside chats once a month, a bonfire during Freshman days, and a religious conference held during the Winter term. Officers of the group are: President, Norma Smith; vice-president, Sara Wurster; secretary, Dorothy Goins. Rev. Floyd White is the ministerial representative, and Mr. Johnson is faculty advisor.



ASSOCIATION FOR CHILDHOOD EDUCATION is an organization which all teacher training students are invited to join. The primary purpose of this association is to help students with any and all problems encountered in teaching. Activities include a pre-school Christmas party for the brothers and sisters of the first grade pupils of Ackerman Training School, and an Easter breakfast for faculty wives. President of the organization is Ramona Davidson; vice-president, Helen Mason; secretary, Denece Decker; and social chairman, Helen Lee. Mrs. Harris is faculty advisor.



LETTERMEN'S CLUB, or The Order of the Blue "O", which is composed of letter winners in major sports, has as its purpose and aim the maintenance and continuance of all campus customs and ideals. In addition to supporting the cherished traditions, the Lettermen's Club sponsors a dance which is one of the social high-lights of the school year. President this year is Bud Jones.



FUTURE TEACHERS OF AMERICA is an organization for those who are interested in making teaching their profession. The purpose of this college club is to bring to the student the motivating power of a life-long purpose and a nationwide outlook; to advance the interests of the teaching profession; to promote the welfare of children; and to foster the education of all people. Officers of the club are: Roy Babcock, president; Henry Weatherspoon, vice-president; Helen Lee, secretary-treasurer; Mary Sommerer, librarian; and Mr. John M. Miller, faculty advisor.



COMMERCIAL CLUB is an organization whose purpose is to promote a closer contact between the activities of the business world and those of our commercial students. Norma Smith heads the organization as president, together with Iris Severens as secretary-treasurer and Norma Newton, publicity chairman. Advisors are Dr. Sterne and Mr. Baer.

Publication of THE BEACON, E. O. C. E. newspaper, began almost simultaneously with the establishment of Eastern Oregon College and is today serving its original purpose—that of informing and entertaining the students. Editors are Phyllis Peterson and Lila Lloyd.

DORION HALL COUNCIL, basis of student government in the residence hall, is composed of house president Marilyn King; vice-president, Janette Frazier; secretary, Betty Coxen; treasurer, Reita Murray; and director of dormitories, Miss Dorothy Byrd.

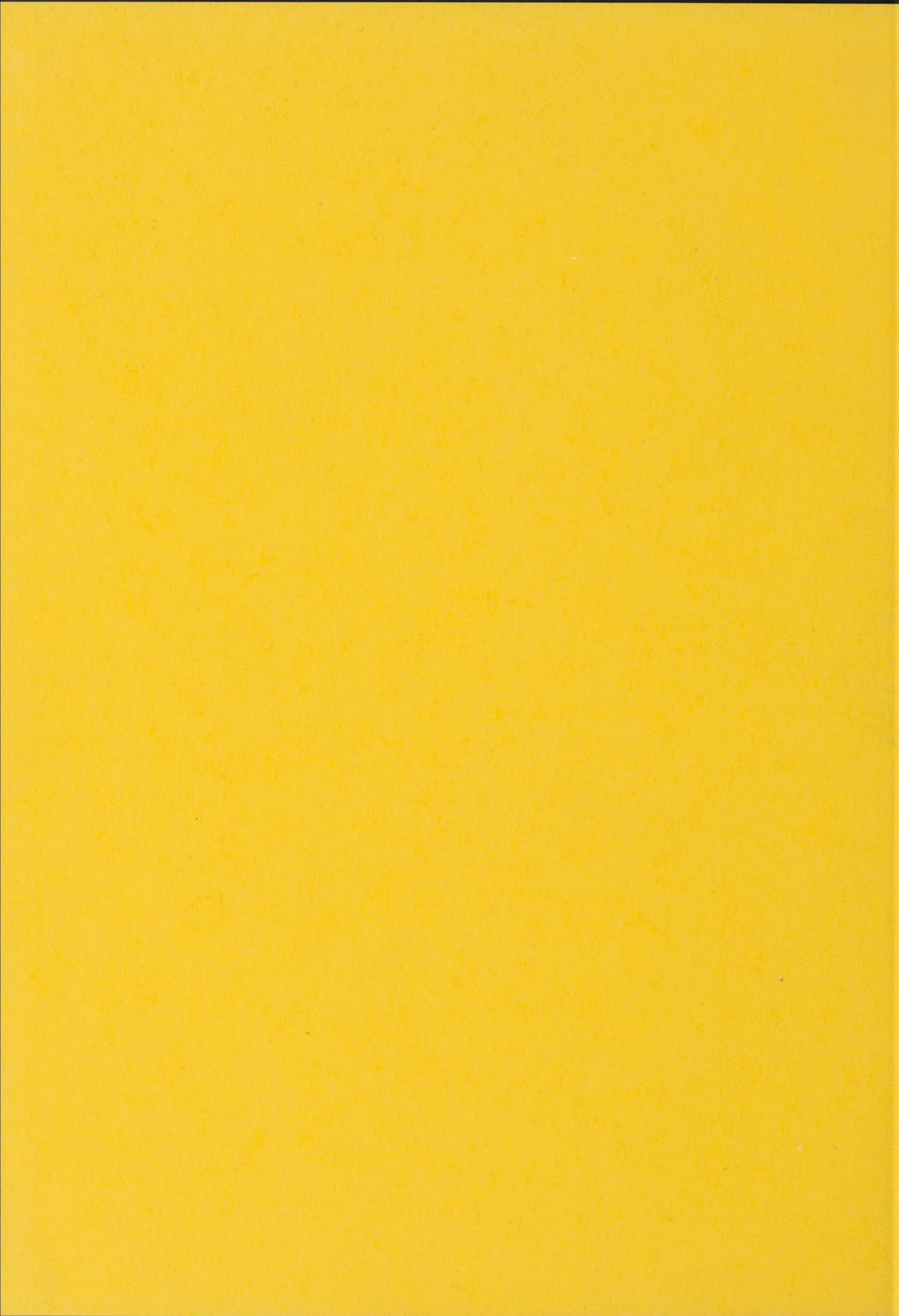
MOUNTIANEERS
WIN 60-56

SPORTS DANCE
ENJOYED BY ALL

CHOIR TO GIVE
CONCERT

RADIO TO
FEATURE
DEBATE

ACTIVITIES





CHRISTMAS FORMAL
sponsored by A. W. S.



WHISKERINO
sponsored by Men's Club

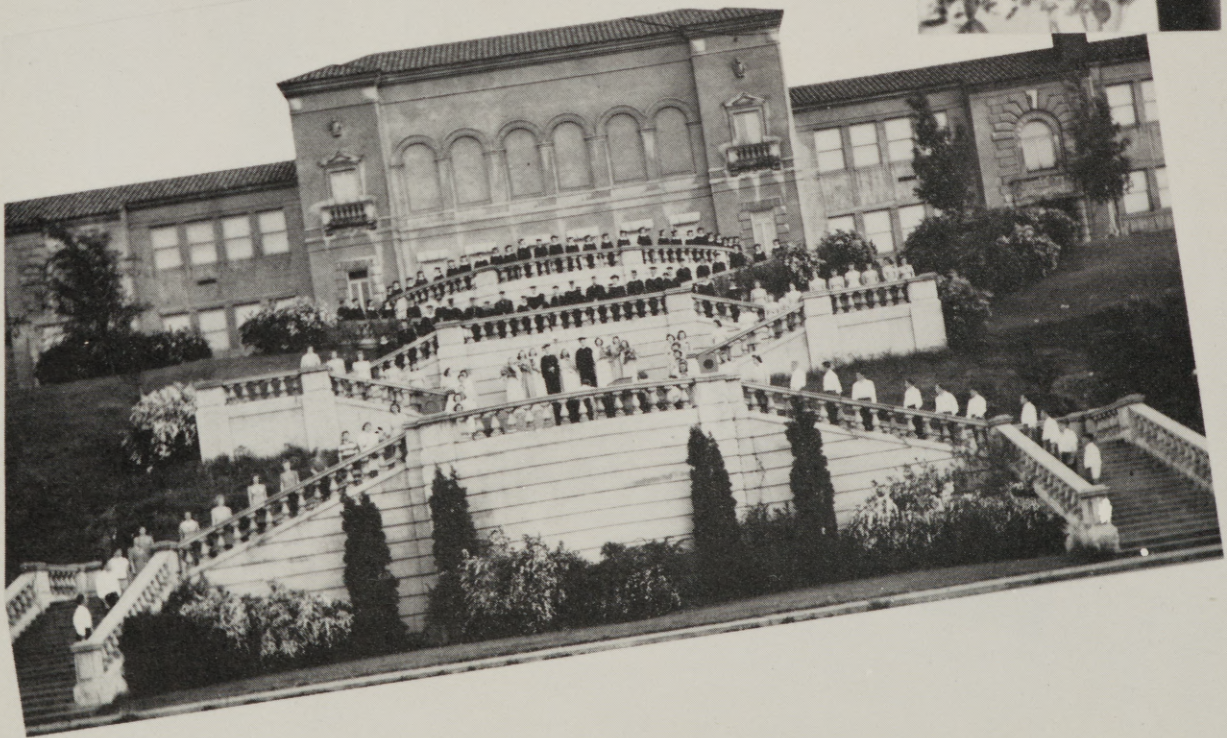


YULE CANDELIGHT HOUR
sponsored by Sigma Alpha Chi



CORONATION BALL 1945 — Queen, Kay Buck Dittrich, and Court

In colorful and melodic pageant, Evensong personifies the endeavor toward high ideals and enlightenment represented by the torch of knowledge. The grand stairway of the college is the setting, and the entire student body participates. The ceremony is presided over by the "Queen of Knowledge" who bids her subjects "gaily sing" as she summons the seniors to light their candles from her flaming torch. The students, including the seniors in caps and gowns, group themselves on the steps and celebrate in songs of the country-side and of their college.





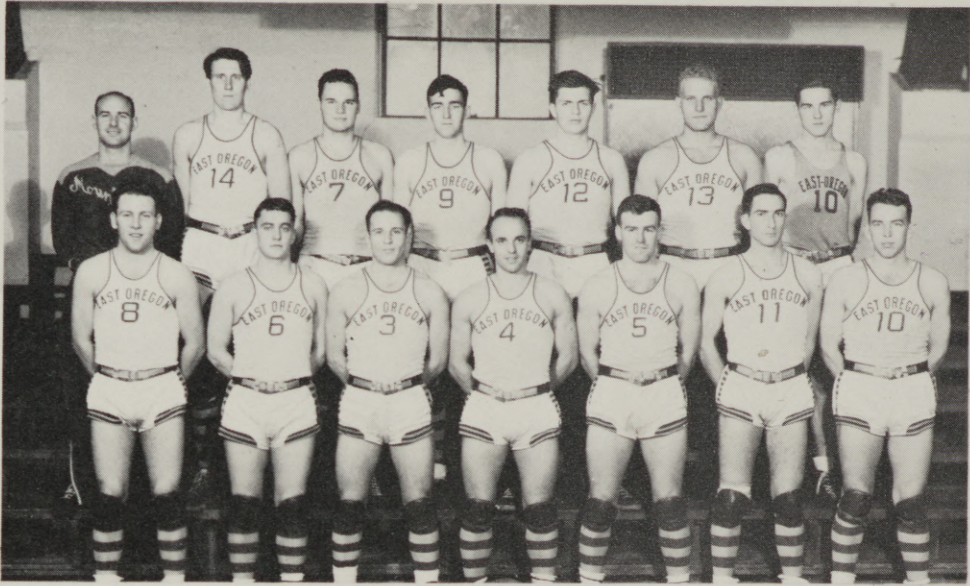
SWEETHEART BALL given by the girls of Dorion Hall was another of the war-time casualties revived this year. Freshman Maureen Browning, one of the five princesses selected, was chosen Sweetheart of the ball. She was attended by princesses Helen Lee, Nadine Tucker, Dorothy Coffman, and Ada Mae Hart.



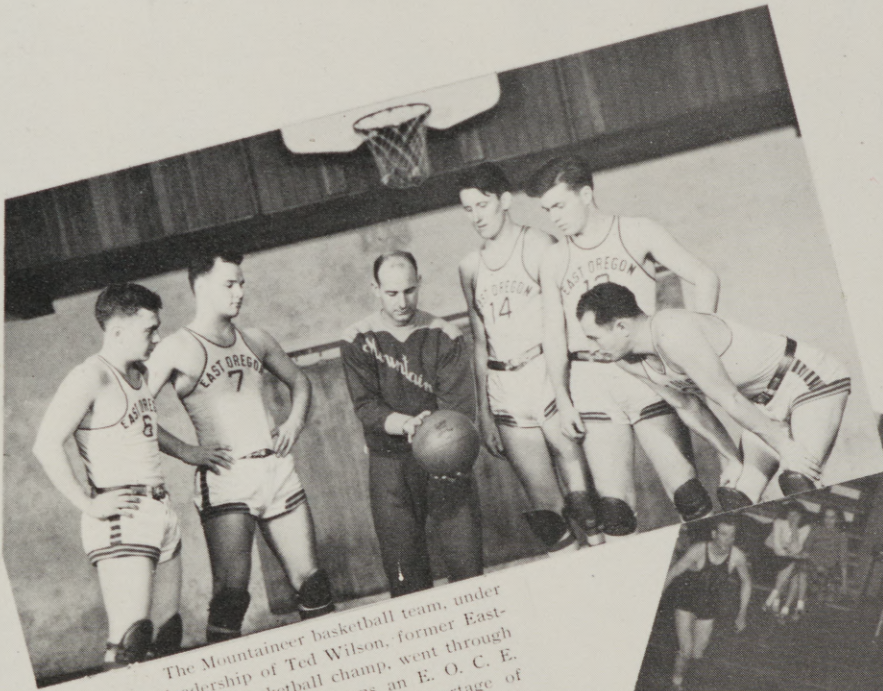
A weekly RADIO PROGRAM sponsored by the College is under the direction of Mr. George Nightingale. Pictured are Mr. Nightingale and Miss Alpha Johnson during one of the programs.



SADIE HAWKINS DANCE, an event of the fall term, brings out the "roughest element" at E. O. C. E. This fall's King and Queen of Dogpatch were Dale Fallow and Dorothy Mayfield.



THE MOUNTAINEERS — First row: Jess Trump, Jack Leifgren, Wayne McKee, Dusty Allen, Dale Hargett, Ross Hearing, Bad Jones.
 Second row: Coach Ted Wilson, Ben Ward, Golden Yeske, Eugene Hargett, Dick Bell, Denver Ginsey, Dale Russell.



The Mountaineer basketball team, under the leadership of Ted Wilson, former Eastern Oregon basketball champ, went through one of the hardest seasons an E. O. C. E. team has ever had to face. Shortage of material and lack of experience were Coach Wilson's greatest obstacles to overcome, but by the end of the season the team had developed into a fast, hard-hitting ball club. Although the Mountaineers' 1945-46 record is not an outstanding one, the experience gained will be of great value next season.





Girls Sports



The girls' physical education program at Eastern Oregon College, under the direction of Mrs. George Nightingale, offers a wide variety of girls' sports in which to participate during regular physical education classes or in connection with the Women's Athletic Association. Sports offered this year were archery, volleyball, basic movement, folk dancing, basketball, badminton, and swimming.



- | | |
|-------------------------------|--|
| 1. Funnya! | 16. Seeing is believing. |
| 2. Bottoms up. | 17. She has it. |
| 3. Dainty dentures. | 18. Oh, babe! |
| 4. Camera action. | 19. Ray-of-sunshine. |
| 5. Deals on wheels. | 20. Remember when, Irene? |
| 6. Coyness speaks for itself. | 21. He's our boy. |
| 7. Ipana ad. | 22. Some technique. |
| 8. Ugh! | 23. Two, too. |
| 9. Just looking. | 24. Girls, girls, and then there's gals. |
| 10. Ask me. | 25. Whatcha doin'? |
| 11. Slumming. | 26. Hang-over deluxe. |
| 12. Dorion, you know. | 27. That gal, Val. |
| 13. Small but mighty. | 28. Glamour, some call it. |
| 14. Meet the Mrs. | 29. At it again. |
| 15. A sure cure. | 30. Hubba! Hubba! |



1. B. T. O. of E. O. C.
2. Boring, isn't it?
3. Sweet, too.
4. Our own Golden.
5. How-do-you-do?
6. Are they kidding?
7. Nice, huh?
8. 2 and 2.
9. Truckin' on down.
10. Your guess!
11. What, again?

12. Oh that woman!
13. Gruesome twosome.
14. Yeah, that's Browning.
15. Chummy is the word.
16. One of the gals.
17. She was a good kid.
18. Carol is the name.
19. Mammy!
20. Innocence.
21. Cute—the dog, of course.
22. He went that way, George.
23. Clean-up Day.

ADVERTISING

CLAUDE BERRY, Real Estate and Insurance
BIRNIE'S JEWELRY
BLUE MOUNTAIN CREAMERY
W. H. BOHNENKAMP CO.
BROOMFIELD & RICHARDSON
BUNTING TRACTOR COMPANY
CHERRYS FLORISTS
CLAYT'S LUNCH
FAIRWAY ELECTRIC
FALK'S LA GRANDE STORE
ROY FARNAM SUPPLY
FIRST NATIONAL BANK OF LA GRANDE
FITZGERALD'S FLOWER SHOP
THE FOUNTAIN
GERARDS WATCH AND JEWELRY SHOP
GETTINGS-LYNCH MOTOR COMPANY
GLASS DRUG COMPANY
M. J. GOSS MOTOR COMPANY
GROTHE LUMBER COMPANY
HAMILTON MOTOR COMPANY
LAVENDAR LUNCH
LIESMAN DRUG COMPANY
McGUIRE'S MARKET
McNAMARA HARDWARE, Marshall-Wells Store
MODERN LAUNDRY AND CLEANERS
MONROE'S MOBIL SERVICE
MOON DRUG COMPANY
NU-WAY CLEANERS
OREGON TRACTOR COMPANY
PAYLESS DRUG COMPANY
J. H. PEARE & SON
J. C. PENNEY COMPANY
PERKINS MOTOR COMPANY
PHOTO ALBUM
RADIO AND MUSIC SUPPLY
CHARLES REYNOLDS, INSURANCE
SHORB'S STATIONERY
FOSTER SIMS, TEXACO DEALER
FRED SPAETH'S PLUMBING
SPOUSE-REITZ, GENERAL MERCHANDISE
SUPER-CREAMED ICE CREAM
THE TOP NOTCH
TROTTER'S MENS' STORE
TURN'S FURNITURE STORE
UNITED STATES NATIONAL BANK
VAN PETTEN LUMBER COMPANY
WAGNER'S DRESS SHOP
WALKER MOTOR COMPANY
LOWELL WILLIAMSON, Insurance and Real Estate
ZIMMERMAN'S GENERAL STORE
NATE ZWEIFEL, PLUMBING AND HEATING







3 5134 00172800 1



