

1938



Oreg.  
K  
LD1741  
.E57Y4  
1938

EON



# EON

1937-38 Yearbook of the Associated Students  
of the  
EASTERN OREGON NORMAL SCHOOL  
La Grande, Oregon

*June, 1938*

PHOTOGRAPHY--Cecil V. Ager, La Grande, Ore.

COVERS--Becktold Cover Company, St. Louis, Mo.

ENGRAVING--The Statesman, Boise, Idaho

PRINTING--Eastern Oregon Review, La Grande, Ore.

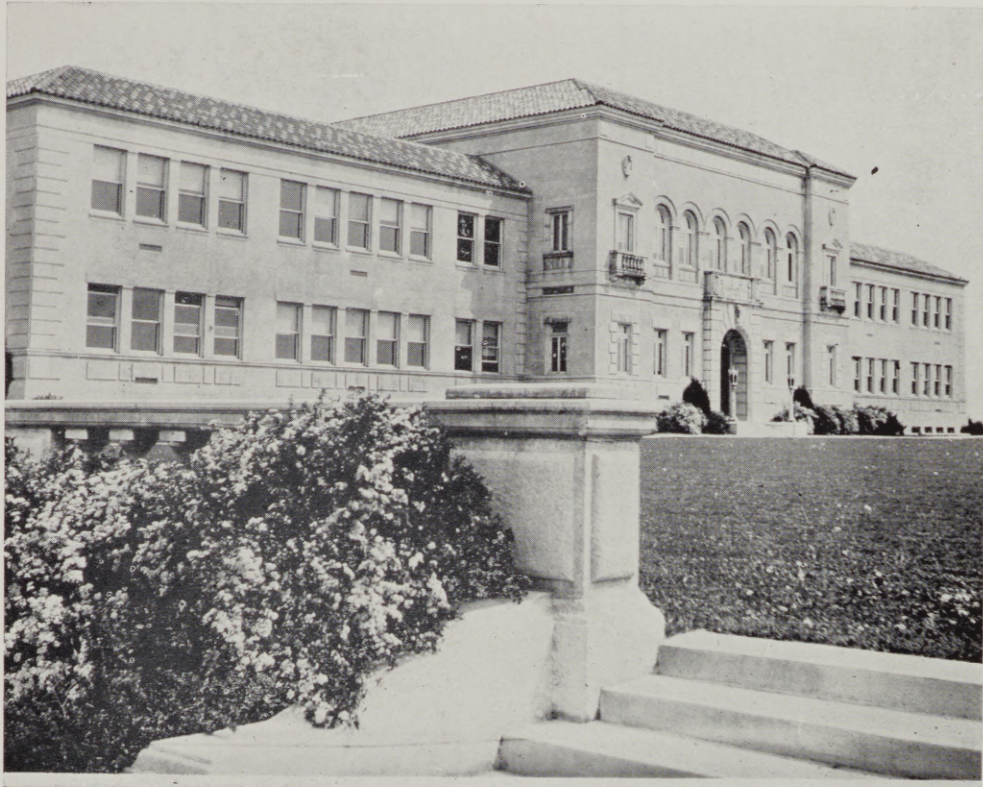
## *Dedication*

The 1938 EON is respectfully and gratefully dedicated to the following business firms and citizens of La Grande whose interest in the school and cooperation with its activities are deeply appreciated:

LA GRANDE THEATERS, INC.  
GLASS DRUGS, INC.  
MONTGOMERY WARD COMPANY  
LEE'S SERVICE STATION—GENERAL  
PETROLEUM  
UNITED STATES NATIONAL BANK  
OF PORTLAND  
La Grande Branch  
EASTERN OREGON REVIEW PUB. CO.  
W. H. BOHNENKAMP  
DR. C. L. GILSTRAP  
MOHR'S FOOD MARKET—MEATS &  
GROCERIES  
G. S. BIRNIE—JEWELER  
J. H. PEARE & SON—JEWELERS  
OPTOMETRISTS  
COLE-WEIMER FREIGHT LINE  
GRANDE RONDE MEAT COMPANY  
REYNOLDS INSURANCE AGENCY  
ABSTRACT & TITLE COMPANY  
FALK'S LA GRANDE STORE

FIRST NATIONAL BANK OF PORTLAND  
La Grande Branch  
ROY FARNAM SUPPLY  
CHRIS' FOODS  
FITZGERALD FURNITURE CO.  
J. C. PENNY CO. INC.  
SAFEWAY STORES INC.  
STANDARD LAUNDRY & CLEANING CO.  
HADLEY'S  
READY-TO-WEAR & BEAUTY SALON  
N. K. WEST & CO.  
THE PIGGLY WIGGLY CO.  
SACAJAWEA HOTEL  
WILLIAMSON & BERRY  
ZION'S MEN'S SHOP  
TROTTER'S  
PERKINS MOTOR CO.  
RICHARDSON'S ART & GIFT SHOP  
NORMAN FREES CHEVROLET  
M. J. GOSS

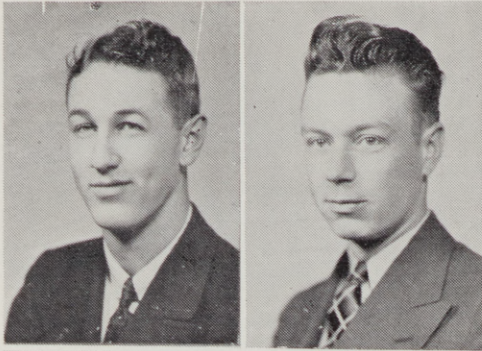
Oreg  
Ref  
LD1741  
155744  
1938



ADMINISTRATION BUILDING



DR. C. A. HOWARD, President



MERRILL J. AINSWORTH La Grande

Junior College

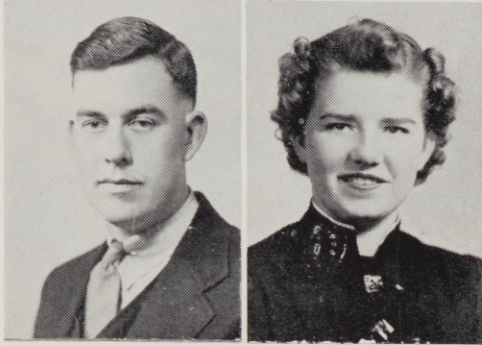
Alpha Rho Tau, President; International Relations Club, staff artist; Men's Club, Theta Delta Phi, Quartet.

EARL ATTEBURY

Stanfield

Junior College

Campus School Masters Club, Men's Club, Theta Delta Phi, Historian.



ROY BABCOCK

Normal

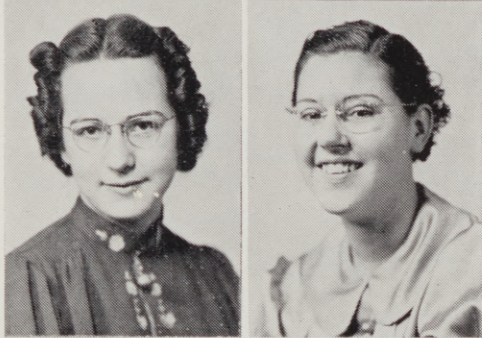
President Sock and Buskin, Vice-President Phi Beta Sigma, Vice-President Campus Schoolmasters Club. Theta Delta Phi, Sock and Buskin.

JOAN BANISTER

Pendleton

Normal

Associated Women Students, President; Alpha Rho Tau; Childhood Education Association, Phi Beta Sigma, Sigma Alpha Chi, Sock and Buskin, Women's Athletic Association, Evensong Queen.



BETTY BOOTH

Meacham,

Normal

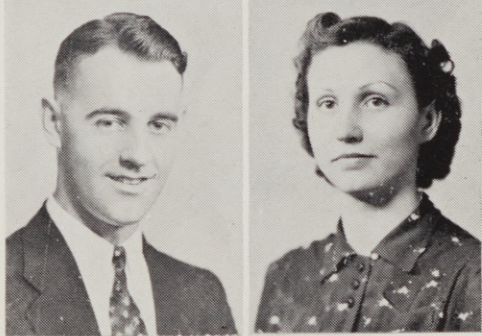
Associated Women Students, Alpha Rho Tau, Phi Beta Sigma, Sock and Buskin. Evensong Princess.

ZELMA BROWN

Tygh Valley

Normal

Associated Women Students, Women's Athletic Association.



WILLIAM CANTRELL

La Grande

Junior College

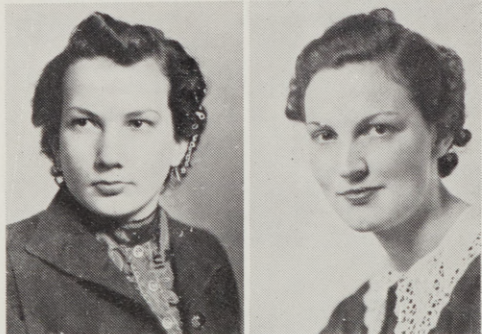
Men's Club.

PAULINE CHRISTENSEN

Freewater

Normal

Associated Women Students, Alpha Rho Tau, Phi Beta Sigma, Sock and Buskin, Women's Athletic Association, Sextet, Trio.



PATRICIA CLARK

La Grande

Junior College

Sock and Buskin, Associated Women Students, Vice President.

HILDRETH COLTON

Baker

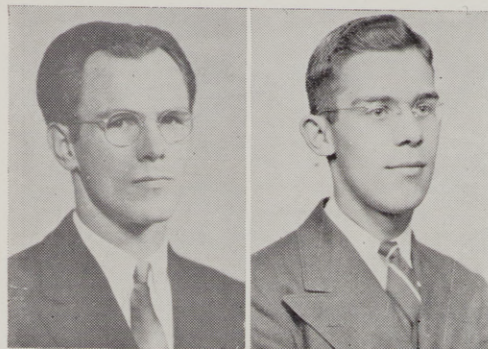
Normal

Associated Women Students, Childhood Education Association, Phi Beta Sigma, Sigma Alpha Chi, Women's Athletic Association.

CHARLES COOK Pendleton

Normal

Theta Delta Phi, Phi Beta Sigma, Sock and Buskin, Alpha Rho Tau, Editor of Beacon, Editor Annual, Quartet, Mixed Quartet, Campus Schoolmasters Club, Secretary.



THOMAS COOK La Grande

Junior College

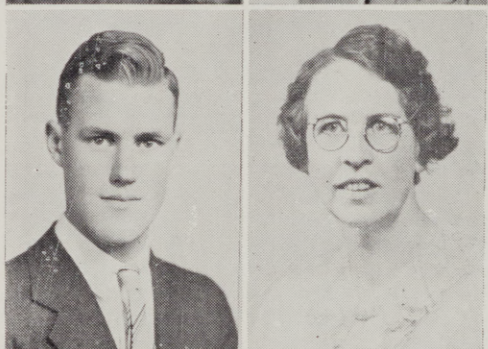
Alpha Rho Tau, Men's Club, Theta Delta Phi, Band.



ELINOR DAWSON Joseph

Normal

Associated Women Students, Alpha Rho Tau, Phi Beta Sigma, President; Sigma Alpha Chi, Vice-President; Sock and Buskin, Women's Athletic Association, Student Council, Evensong Princess.



BESSIE DEXTER Umatilla

Normal

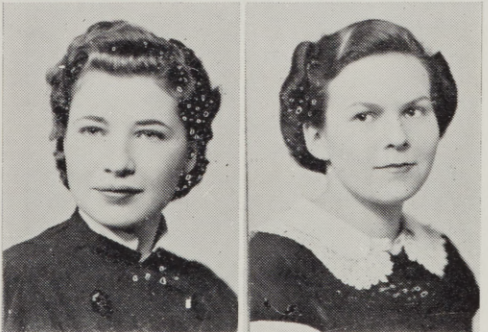
Associated Women Students, Treasurer; Phi Beta Sigma, Women's Athletic Association, Evensong Princess.



JACK EAKIN La Grande

Junior College

International Relations Club, Men's Club, Theta Delta Phi, Student Council, Student Body Business Manager.



JULIA G. EBELL Baker

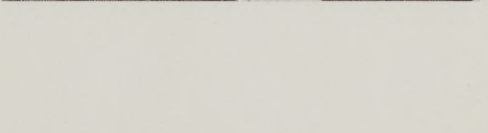
Normal

Associated Women Students.

HELEN FEDLER Ritter

Normal

Associated Women Students, Nature Club, President, Sigma Alpha Chi, Women's Athletic Association.



EVELYN FORD Hermiston

Normal

Associated Women Students, Childhood Education Association, Nature Club, Women's Athletic Association.

EMMA FRASIER Weiser, Idaho

Normal

Associated Women Students, Alpha Rho Tau, Childhood Education Association, Women's Athletic Association.

CLAUDIA GABRIEL Stanfield

Normal

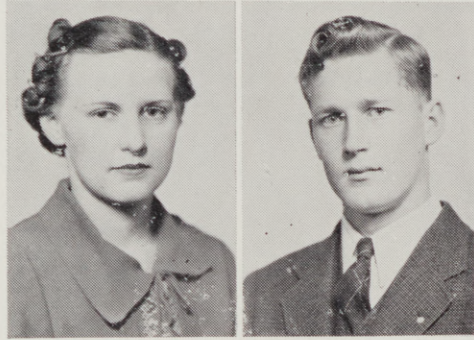
Associated Women Students, International Relations Club, Librarian; Phi Beta Sigma, Women's Athletic Association.



MARY JUNE GAGE Mitchell  
Normal  
Associated Women Students, Women's Athletic Association.



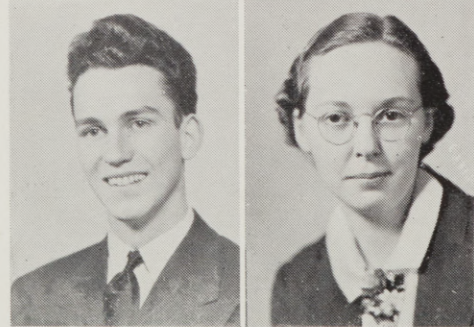
RUTH HALE Imbler  
Normal  
Associated Women Students.



ORELLA HOLLOWAY Elgin  
Normal  
Associated Women Students, Women's Athletic Association.



GENEVIEVE HOOKE Freewater  
Normal  
Associated Women Students, Childhood Education Association, Women's Athletic Association, Senior Editor of Annual.



DON JASPER La Grande  
Junior College  
International Relations Club, Men's Club, President; Theta Delta Phi, Sock and Buskin, Student Council.

ROSS JOHNSON Wallowa  
Normal  
Campus School Masters Club, International Relations Club, Men's Club, Sock and Buskin.

RUTH JOHNSON Wallowa  
Normal  
Sigma Alpha Chi, Phi Beta Sigma, Associated Women Students, Women's Athletic Association.

DELL KENNEDY La Grande  
Junior College  
Alpha Rho Tau, International Relations Club, Men's Club, Theta Delta Phi, Sock and Buskin, Student Council, Student Body President.

IRMA KLINGHAMMER La Grande  
Normal  
Associated Women Students, Alpha Rho Tau, Phi Beta Sigma, Sigma Alpha Chi, President, Sock and Buskin; Student Council, Evensong Princess.

LOUISA LOVELAND Parma, Idaho

Normal

Associated Women Students, Childhood Education Association, Women's Athletic Association.

RUTH McCRAW

Freewater

Normal

Associated Women Students, Childhood Education Association, Secretary, Women's Athletic Association.

MARIE MCGILL

Huntington

Normal

Associated Women Students, Childhood Education Association, Vice-President, Nature Club; Sock and Buskin, Women's Athletic Association.

WILDA MCKENZIE

Wallowa

Normal

Associated Women Students, Alpha Rho Tau, Phi Beta Sigma, Sock and Buskin, Student Council, Sextet, Trio, Evensong Princess.

DONALD MATTES

Baker

Normal

Alpha Rho Tau, Campus School Masters Club, Men's Club, Phi Beta Sigma, Theta Delta Phi, Sock and Buskin.

OLIVE MORRIS

La Grande

Normal

Associated Women Students, Alpha Rho Tau, Treasurer, Childhood Education Association, Women's Athletic Association.

RHODA MORRIS

La Grande

Normal

Associated Women Students, Childhood Education Association, Women's Athletic Association.

LUCILLE MOYER

Heppner

Normal

Associated Women Students, Childhood Education Association, President; Phi Beta Sigma, Sigma Alpha Chi.

MIRIAM MOYER

Heppner

Normal

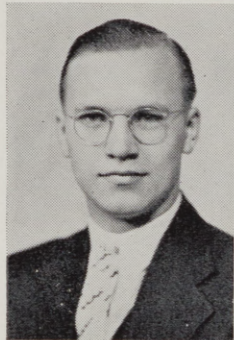
Associated Women Students, Alpha Rho Tau, Childhood Education Association, Phi Beta Sigma, Sigma Alpha Chi.

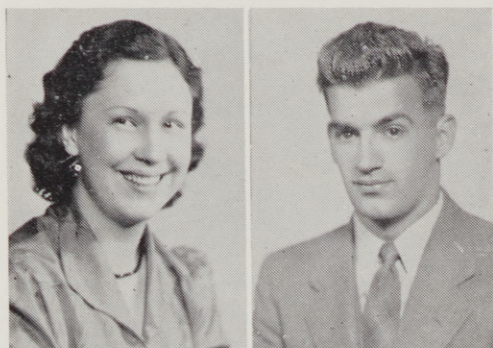
BARBARA NORKOSKI

Boardman

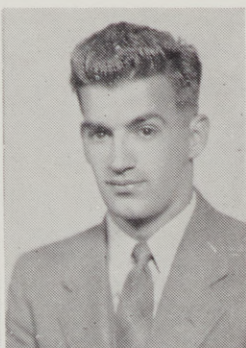
Normal

Women's Athletic Association, Associated Women Students, International Relations Club, Childhood Education Association.





LENNE NEIL Heppner  
Normal  
Associated Women Students, Women's Athletic Association.



FRED PETERSEN Seattle, Wash.  
Normal  
Letterman's Club, President; Men's Club, football, basketball, quartet.



ERVYL PIKE Union  
Normal  
Associated Women Students, Childhood Education Association.



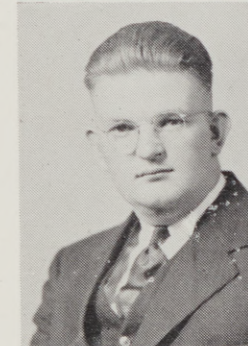
LORRAINE POLLOCK Bowman, N. D.  
Normal  
Associated Women Students.



LONA NELDA PRICE Cove  
Normal  
Associated Women Students, Alpha Rho Tau, Childhood Education Association, Phi Beta Sigma, Sigma Alpha Chi, Sock and Buskin.



KATHRYN QUAST Ontario  
Normal  
Associated Women Students, Childhood Education Association, Phi Beta Sigma, Women's Athletic Association, Sextet.



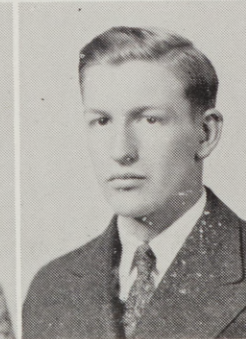
BILL SAMPSON La Grande  
Normal  
Campus School Masters Club, President; Men's Club, Phi Beta Sigma, Theta Delta Phi, Sock and Buskin, Beacon Advertising Manager, Annual Staff.



IRENE SCHECKEL Selvis  
Normal  
Associated Women Students, Alpha Rho Tau, Phi Beta Sigma, Women's Athletic Association, Vice-President.



CATHERINE SCULLY La Grande  
Normal  
Associated Women Students, Alpha Rho Tau, Childhood Education Association, International Relations Club, Nature Club, Sock and Buskin, Women's Athletic Association.



FARREN SHAFER Portland  
Normal  
Campus School Masters Club, Secretary; Men's Club, Nature Club, Phi Beta Sigma.

MYRTLE SMITH La Grande

Normal

Associated Women Students, Childhood Education Association.

ARTHUR SMITH Helix

Normal

Men's Club, President; Phi Beta Sigma, Theta Delta Phi, Secretary-Treasurer, Alpha Rho Tau.

INEZ SPENCE Galena

Normal

Associated Women Students, Alpha Rho Tau, Childhood Education Association, Nature Club, Women's Athletic Association.

GLORIA SWAN La Grande

Normal

Associated Women Students, Alpha Rho Tau, Nature Club, Phi Beta Sigma, Sock and Buskin, Women's Athletic Association; President, Sextet, Trio, Evenson Princess.

JEAN LOUISE TAYLOR La Grande

Normal

Associated Women Students, Childhood Education Association, Vice-President, Sigma Alpha Chi, Sock and Buskin, Women's Athletic Association.

CHARLES VAN KOTEN Roseburg

Normal

Alpha Rho Tau, Campus School Masters Club, Letterman's Club, Men's Club, Phi Beta Sigma, Sock and Buskin, Beacon Staff, Annual Staff.

BEVERLY VICTOR La Grande

Normal

Associated Women Students, Childhood Education Association, Sock and Buskin, Women's Athletic Association.

JIM VOELZ La Grande

Junior College

International Relations Club.

RON WALK North Powder

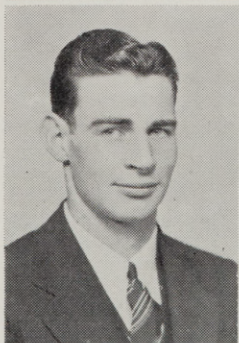
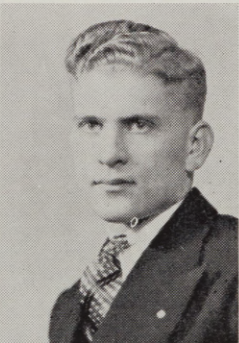
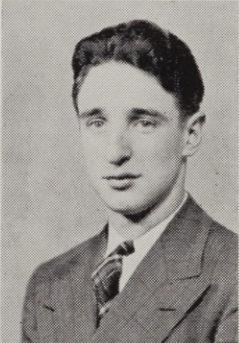
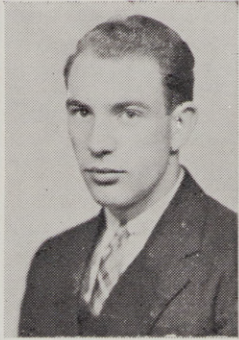
Normal

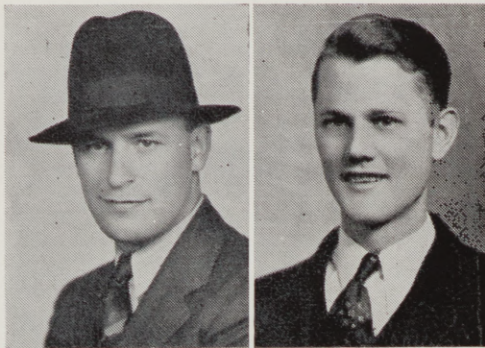
Alpha Rho Tau, Campus School Masters Club, Letterman's Club Men's Club, Phi Beta Sigma, Senior Class President, Football.

HELEN WEBB MOSELEY Halfway

Normal

Associated Women Students, Phi Beta Sigma, Secretary of Senior Class.





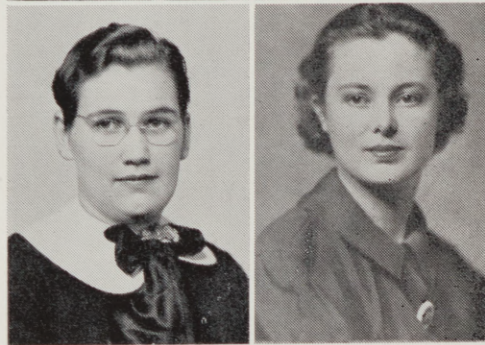
LEO WAITE La Grande  
Junior College  
Letterman's Club, Men's Club.

CLIFFORD WESTENSKOW La Grande  
Normal and Junior College  
Campus School Masters Club, International Relations Club, Men's Club, Phi Beta Sigma, Theta Delta Phi, President; Sock and Buskin.



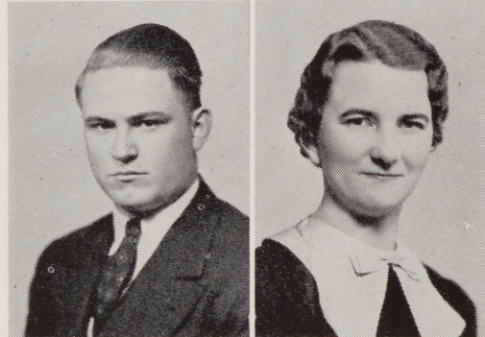
SHIRLEY ZION La Grande  
Junior College  
Associated Women Students, Sigma Alpha Chi, Annual Staff.

HAZEL BERTHELSEN Freewater  
Normal  
March Graduate



MARY MARGARET BLACK Baker  
Normal  
Alpha Rho Tau; Associated Women Students.

MURIEL DREWETT Prairie City  
Normal  
Associated Women Students; Women's Athletic Association; October graduate.



LLOYD MURCHISON Cove  
Normal  
Theta Delta Phi; Sock and Buskin, president; Campus Schoolmasters' club, chairman; Men's club.

BERTHA SWANSON Tioga, N. D.  
Normal  
Associated Women Students.



LUCY SWANSON La Grande  
Normal  
Associated Women Students.

HELEN WHITE La Grande  
Normal  
Alpha Rho Tau, vice-president; Women's Athletic Association; Sock and Buskin; Associated Women Students; Pep club.

MARVIN WIGGANS                      Lostine  
 Junior College  
 March Graduate, Orchestra, Band,  
 Chorus. (not pictured)

ROBERT McMILLAN                      La Grande  
 Junior College  
 Men's Club, Band. (not pictured)



The Seniors whose pictures appear below do not graduate this year.

EDNA MAE BURRESS    Waynesville, N.C.  
 Normal  
 Chorus, Sock and Buskin, Nature  
 Club Sec.-Treas., Women's Athletic  
 Ass'n. Treasurer.

BETTY CARTER                      Pendleton  
 Normal  
 Associated Women Students.

RUTH COLLEARY                      Heppner  
 Normal  
 Associated Women Students.

HOWARD DIXON                      La Grande  
 Junior College  
 Men's Club.

EDWARD ELLIOT                      La Grande  
 Junior College  
 Men's Club.

JOHN FISHER  
 Theta Delta Phi; Special student, re-  
 ceiving B. S. degree from U. of O.

DONALD GALBREATH                      La Grande  
 Junior College  
 International Relations Club, Men's  
 Club.

KNOX PARKER                      La Grande  
 Junior College  
 Men's Club, Basketball.

HOWARD GRAHAM                      La Grande  
 Junior College  
 Vice-president International Rela-  
 tions Club, Men's Club, President-  
 elect Theta Delta Phi. (not pictured)

LAWRENCE ROBERTS                      La Grande  
 Junior College  
 Theta Delta Phi, Men's Club. (not  
 pictured)

## *Freshman Class*

The Freshman class, under the Faculty advisorship of Elmo Stevenson, opened its year's activities with election of officers soon after the beginning of the term. Swinging full force into the social life of E. O. N., the class found enjoyment in the events of the opening weeks of school—the Melting Pot, a hilarious party sponsored by the Seniors; the Faculty Reception, a formal welcoming feature by the E. O. N. Faculty; and Church night, the occasion of social gatherings at the various churches of the city taking an active part in the events surrounding Homecoming; burning the traditional O on the slopes of Table Mountain; the St. Patrick's day jig; the Senior-Freshman picnic, given by the latter, at Radium Springs—all of this, and more kept the class busy, but not too busy to place many of its members on the honor roll for scholastic achievement.

The following are Freshmen who did not have pictures taken:

MARJORIE BAIRD, Halfway; Normal; Phi Beta Sigma.

ARLYN BECK, La Grande; JC; Men's Club.

LOUISE BENSEL, Hermiston; Normal; Nature Club; Women's Athletic Association.

AMOS BERTHELSEN, Freewater; Normal; Men's Club.

DONALD BROWNING, La Grande; JC; Men's Club.

LOY FISHER, Halfway; JC; Men's Club.

GORDON GUSTAFSON, La Grande; JC; Men's Club.

MARGARET HALE, Adams; JC; Associated Women Students.

BETTY HANNAN, La Grande; Normal; Chorus; Associated Women Students.

GORDON HASKETT, Homestead; JC; Men's Club.

ELIZABETH HENDRICKSON, La Grande; Normal; Associated Women Students.

GEORGE HILL, La Grande; Men's Club.

GERALD HILL, La Grande; JC; Men's Club.

LESTER JOHNSON, Cove; JC; Men's Club.

JACK McCLAY, La Grande; JC; Men's Club.

JAMES McNUTT, Halfway; JC; Men's Club.

DOROTHY MARCUM, Pendleton; JC; Associated Women Students.

WILBUR MILLAR, Freewater; Normal; Men's Club. Sock and Buskin; Inter. Relations.

HENRY MILLER, Union; Normal; Men's Club.

AUBURN NORRIS, Halfway; JC; Men's Club.

GENE OCHSE, Condon; Normal; Associated Women Students.

DON RAGSDALE, La Grande; Normal; Men's Club; Sock and Buskin; Campus Schoolmasters' Club.

VAN ROBINSON, Cove; Normal; Men's Club.

FREDA SCHECKEL, Silvies; JC; Associated Women Students.

KATHERINE WAGNER, La Grande; JC; Associated Women Students.

POWELL GRAHAM, Freewater, JC; Pres. Freshman Class; Lettermen's Club; Sock and Buskin.

HENRY ANDERSON, JC; Vice-Pres. Freshman Class; Lettermen's Club; 1938-39 Student Body President.

KATHLEEN WILLIAMSON, La Grande; JC; Sec.-Treas. Freshman Class; Accompanist; Sigma Alpha Chi; Sock and Buskin; Chorus.

JUNE ALLEN, Cove; Normal; Women's Athletic Ass'n.

EDMUND ATTEBURY, Stanfield; Normal; Men's Club, basketball.

GRACE HELEN BOHNENKAMP, La Grande; JC; Assoc. Women Students, Sock and Buskin.

QUENTIN BOWMAN, North Powder; Normal; Vice-Pres., Campus School Master's Club; 1938-39 Pres., Phi Beta Sigma; Inter. Rel. Club; Beacon Staff; 1938-39 Senior Council Member.

TIMMY BRINTON, Baker; Normal; Theta Delta Phi; Student Council member; Men's Club Executive; Sock and Buskin.

MAXINE BROWNING, Brogan; Normal; Associated Women Students.

JEAN BURCH, La Grande; Normal; Student Council member; Phi Beta Sigma; Chorus. 1938-39 Senior Council member.

ICEL COLLINS, La Grande; Normal; Associated Women Students; Beacon Staff.

KATHLEEN COMSTOCK, Cove; JC; Women's Athletic Ass'n.; Freshman girls sports-manager.

VERDUN CUMMINS, La Grande; JC; Men's Club.

MILTON DAUGHERTY, La Grande; JC; Men's Club.

ROLAND FARRENS, Heppner; JC; Men's Club, Theta Delta Phi.

JOSEPH FEIK, La Grande; JC; Men's Club.

CONSTANCE FINLEY, La Grande; Normal; Chorus; Sock and Buskin; Beacon Staff.

JOSEPHINE FISHER, Alicel; JC; Women's Athletic Ass'n.; Chorus.

MARIAN GEHRING, La Grande; JC; Int. Rel. Club; Nature Club; Women's Athletic Ass'n.; Chorus.

LYLE GERBER, La Grande; JC; Men's Club; Sock and Buskin.

FRANKLYN GREEN, Huntington; Normal; Men's Club; Sock and Buskin.

NOLA GREEN, La Grande; Normal; Women's Athletic Ass'n.; Chorus; Annual Staff.

VIVIAN HAMMAN, La Grande; Normal; Women's Athletic Ass'n.; Sigma Alpha Chi; Beacon Staff.

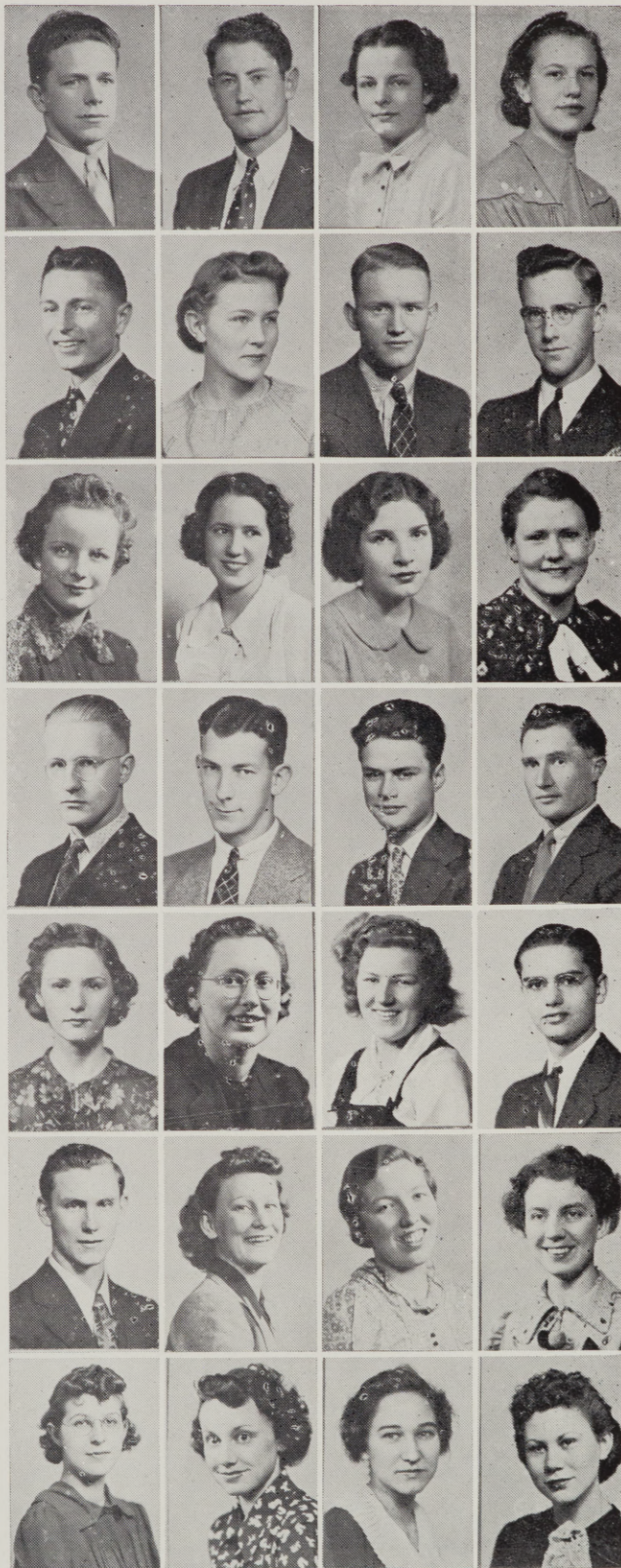
ROSE HOOSIER, Stanfield; Normal; Inter. Rel. Club; WAA; Sigma Alpha Chi; Chorus, Acc.; Mixed quartet; Beacon Staff; Freshman Editor. EON; 1938-39 Treas., Phi Beta Sigma.

LOUISE HUGG, La Grande; Normal; Women's Athletic Ass'n.; Orchestra; Chorus.

JEAN HYDE, La Grande; JC; Associated Women Students.

PHYLLIS IOERGER, Jerome; Normal; Associated Women Students; Sigma Alpha Chi.

REBA KAIL, La Grande; Normal; Women's Athletic Ass'n.; Chorus; Sock and Buskin; Annual Staff; Women's Sextet.





BERTA LLOYD, Imbler, Normal; Phi Beta Sigma; Inter. Rel. Club; Sigma Alpha Chi; Chorus; Sock and Buskin; Beacon Staff.

STEVE LUKSON, La Grande; JC; Men's Club; Yell Leader.

IRIS LYON, Bartlett; Normal; Inter. Rel. Club; Women's Athletic Ass'n; Sigma Alpha Chi; Chorus; Sock and Buskin; Beacon Staff.

JAMES MCGILL, Huntington; JC; Men's Club; Beacon Staff; Sock & Buskin; Hum. Ed. EON.

MARGARET McMULLEN, Hermiston; Normal; Nat. Ass'n. of Childhood Ed.; WAA; Sigma Alpha Chi; 38-39 Sec. Phi Beta Sigma.

EDITH MILES, Baker; Normal; Inter. Rel. Club; Sigma Alpha Chi.

DONALD MURRAY, Freewater; JC; Men's Club; 1938-39 Student Body Vice-President; Sock and Buskin.

HELEN PETERSON, La Grande; JC; Associated Women Students.

JACK PIPER, Lime; Normal; Inter. Rel. Club; Nature Club; Sock and Buskin; Campus Schoolmasters Club.

IDAMARY PROUTY, La Grande; Normal; Women's Athletic Ass'n.; Orchestra acc.

FRANCES SINGLETON, La Grande; JC; Inter. Rel. Club; WAA; Sigma Alpha Chi; Chorus; Beacon. Man. Ed., Spring term; Org. Ed., EON.

STEVE SMITH, La Grande; JC; Men's Club.

ROBERT SOMES, Granite; Normal; Lettermen's Club; Chorus; Beacon Staff; Alpha Rho Tau.

BETTY STEIN, Pondosa; Normal; Women's Athletic Ass'n.; 1938-39 Vice-pres., Phi Beta Sigma. 1938-39 Student Body Sec.

LETA STEIN, La Grande; JC; Associated Women Students.

JEANETTE STRAND, La Grande; Normal; WAA; Chorus; Beacon Staff.

ORSON TAYLOR, La Grande; JC; Men's Club.

ELEANORE TISCHLER, The Dalles; JC; Sigma Alpha Chi; Asst. Freshman Editor, Asst. Organization Editor, EON.

PRISCILLA VANDECAR, Durkee; Normal; Associated Women Students.

ROBERT VAN ELSBERG, La Grande; JC; Men's Club.

EDWARD WAITE, La Grande; JC; Men's Club.

MARY WATKINS, Myrtle Point; Normal; Chorus; Associated Women Students.

RAYMOND WEATHERSPOON, La Grande; Normal; Theta Delta Phi; Orchestra; Chorus; Sock & Buskin; Campus Schoolmasters' Club.

VERA WETZEL, La Grande; JC; Sigma Alpha Chi; Sock and Buskin; Beacon Staff.

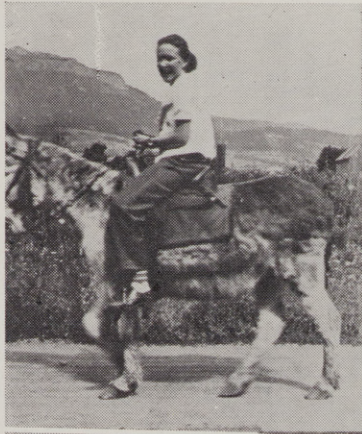
DELLA MAE WILLIAMS, La Grande; JC; Women's Athletic Ass'n.; Sock and Buskin.

JANE WILLIAMS, La Grande; Normal; Phi Beta Sigma; Chorus; Women's Sextet; Mixed Quartet.

CARLYLE WILSON, La Grande; JC; Men's Club; Annapolis Candidate.

HARRISON ZURBRICK, La Grande; JC; Chorus; Secretary-Treasurer, Int. Rel. Club.

"Grace He'en  
is the one  
on top"



Team-work  
and  
Cooperation



"Oh Woo - Woo"  
(middle)

"What's  
this?"



"They couldn't  
be cuter". ?

"Wabash"  
&  
"Butch"



"Our Pal  
Perry"

An  
accustomed  
sight  
around  
E. O. N.



Miss  
Gabriel



Helen S. Moor, Dean of Women  
Registrar.

### *Associated Women Students*

President:	-	-	-	Joan Banister
Vice President:	-	-	-	Patricia Clark
Secretary:	-	-	-	Betty Booth
Treasurer:	-	-	-	Bessie Dexter
Advisor:	-	-	-	Helen S. Moor

The A. W. S. is an association for all women students. Under the new method of organization every girl is placed on a standing committee which functions throughout the year. Committee chairmen for this year were: Publicity, Gloria Swan; Fellowship, Elinor Dawson; Social, Lucille Moyer; and Program, Lona Nelda Price. These girls with the officers formed an executive board. This board held monthly meetings to plan activities.

The girls hold monthly meetings where tea is served, and each committee is responsible for a program.

The December meeting sponsored by the Program Committee, was a Vesper Service. Other interesting programs included Miss Madeline Larson's discussion of "Women's Conference at Budapest", Miss Anne Gilles on "Costume Designing", and Mrs. Leonhardt on "Folk Dance Music".

The Social Service Committee sold enough candy, ice cream, and gum to transform a rather unattractive "girls' room" into a delightful one. The process included repainting, calcimining, refinishing of old furniture, and the purchase of four beautiful study chairs, a day bed, and a study lamp.

The Social Committee was responsible for a lovely Christmas formal dance. The theme Winter was illustrated by glistening snowballs suspended from the ceiling, and fir trees arranged around the hall.

The last meeting of the year barred all formality, tea, and usual procedures for games and a good time.

## *The Men's Club*

President: - - - - - Art Smith  
Executive Board: - - - - - Jack Eakin, Don Jasper  
Dell Kennedy, Quentin Bowman, Tim Brinton  
Advisor - - - - - Elmo Stevenson



Elmo Stevenson  
Assistant Professor of Science

Membership in the Men's Club of E. O. N. includes all Men Student Body ticket holders. The club was organized to promote sportsmanship and good fellowship among the men of the school.

Among the activities which the club undertook was the annual dance in January. The second dance of the term was the social highlight of the season. Featuring the "Big Apple" in a barn dance atmosphere, the men abolished traditional standards and mingled the latest with the best. Rustic costumes and baled hay beside heaping boxes of delicious apples under the soft glow of pale indirect lights changed the auditorium into a happy place where the students danced to the melodies of modern music. Special entertainment for the cheerful throng was an exhibition of the nation's novelty dance rage, the "big apple", by a troupe of light-footed students. Added attraction of the evening was the awarding of prizes to winners in the "Whiskereeno," Men's Club-sponsored whisker contest. The prizes were given at the climax of a two week's tournament among the men students—a tournament which was hailed by all hearty Mountaineers and promises to be an annual event. The reddest, the longest, the thickest, and the blackest beards all received recognition for their unshorn facial shrubbere.

Spring term brought an event anticipated by the men for many months. The early Wallowa lake week-end trip was made during the early part of May. Nearly all the men took the two day journey and returned with stories of time well spent in the cut-of-doors and around the campfire at the scenic wonderland.

The Club made themselves known as a wide-awake bunch of hale and hearty fellows at the "smokeless smoker" in October. The gymnasium was the scene of conflicts between the brawny members. Boxing, wrestling, "swat the kaiser", and other games consumed the superfluous energy of the men, while doughnuts and cider provided fuel for further struggles.



Arta Lawrence  
Assistant Professor of Education

## Childhood Education Association

President:	-	-	-	-	Lucille Moyer
Vice Presidents:	-	-	-	-	Jean Taylor
					Lona Nelda Price, Marie McGill
Secretary:	-	-	-	-	Ruth McCraw
Advisor:	-	-	-	-	Arta Lawrence

The La Grande branch of the Association For Childhood Education was organized at the Eastern Oregon Normal School in the fall of 1931. It is one of ten such organizations in the state of Oregon which is affiliated to form the Oregon branch of the National Association For Childhood Education with headquarters at Washington D. C.

The purpose of the organization is to bring primary teachers and others interested in early education together for informal discussions through means of readings, addresses, and lectures. Experienced and inexperienced teachers meet together and gain a broader and more professional outlook of the various phases of teaching outside of the classroom instruction.

The membership of the local branch is composed of E. O. N. faculty, members of the educational department, primary teachers of La Grande public schools, and Normal School students interested in primary education.

An assembly program was presented by this group on January 26. The central feature of the program was the discussion of a series of paintings produced by Charles Martin's Art Class at Columbia University. The pictures carried the theme of the growth and development of the kindergarten since its establishment by Frederick Froebel in 1873.

Meetings for the year have included a Hallowe'en party, book week program, talks which were also given at state teachers' meeting at Portland, a review of publications, and evaluation of experiences gained in teaching in city schools. They also had charge of the annual Easter breakfast at which former members, now teaching, were present.

## Women's Athletic Association

President:	-	-	-	-	Gloria Swan
Vice President:	-	-	-	-	Irene Scheckel
Secretary:	-	-	-	-	Ruth Johnson
Treasurer:	-	-	-	-	Edna Mae Burres
Senior Sports Manager:	-	-	-	-	Edna Mae Burres
Freshman Sports Manager:	-	-	-	-	Kathleen Comstock
Advisor:	-	-	-	-	Madeline Larson



Madeline Larson  
Ass't. Professor of Physical Ed.

The more athletic-minded young women of E. O. N. S. cooperate in forming the Women's Athletic Association under the direction of Madeline Larson. It is through this organization that tournaments are offered in both team and pal games. The traditional football-craze of the fall season is satisfied through speedball. Few can develop the kick as have Ruth Johnson and Pauline Christensen. In the winter term much time is spent on basketball for which a large group turn out. One does not need skill to begin, just come and play on your good nature, as did Genevieve Hook and Ruth McCraw, and you will soon gain the necessary technique. When Bessie Dexter and Berta Lloyd team as forwards, the ball is certain to reach its goal. Watch your step or else the keen-eyed referee—June Allen, Vivian Hammon, Ruth Johnson, or Gloria Swan—will be sure to whistle. The team games for the spring quarter were baseball and soccer. besides these main games there is a wide variety of pal games offered for those who do not like so much action. Of these, a very popular one is badminton, which is cleverly demonstrated by Ruth Colleary, Hildreth Colton, or Katherine Quast. Ines Spence throws a neat deck tennis ring but it takes Patricia Clark and Helen Webb to skillfully shove a plate in shuffleboard. Margaret McMullen and Louise Bensel prefer a precise game of horseshoe to Estelle Lyell's, Jean Hyde's, or Helen White's acrobatic play in tumbling. A lively game of tennis is much to the fancy of Edna Mae Burres, while Genevieve Hook will try her skill with the bow and arrow. Volleyball is a favorite among many and is especially emphasized by the blows from Marian Gehring and the neat returns by Catherine Scully.

This organization is not only active through its sports but also through its many activities about the school. The Colonial Ball is one of the most glamorous formal dances of the year. The spring term offers its annual all-sports banquet and picnic. Regular monthly meetings are held, some of which are enlivened by programs. The candy sale in the halls each day is also aided by this organization.

A  
Sample of  
College  
Life



A Thorn  
among  
4 roses

Our ex-  
A. W. S. leaders  
and our Dean



Wisdom  
Makes us  
do stronger  
things"

Extra  
Curricular  
Activities (?)  
for  
Men students



Interesting

International  
Relations Club  
during peace  
times



"Pappy"  
Babcock

Champs  
along  
every line



Trio  
Sextet

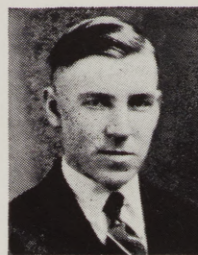
Our  
Athletics  
"Teacher  
hower"



Women's  
Athletic  
Association

## *Phi Beta Sigma*

President	-	-	-	-	Elinor Dawson
Vice-President:	-	-	-	-	Roy Babcock
Secretary:	-	-	-	-	Gloria Swan
Treasurer:	-	-	-	-	Clifford Westenskow
Advisors:	-	-	-	-	John M. Miller, R. R. Palm



Reuben R. Palm  
Instructor in Education

### FALL TERM

At the meeting of the Eastern Oregon Educational Convention last October, the club took charge of registration of all teachers attending the meetings. Although it was a difficult job, under the direction of Mr. Palm the work was carried through to the satisfaction of all.

In November the club had National Education Week Assembly building its program around the theme of the Horace Mann Centennial. Three interesting and informative talks were presented by the new pledges, Bill Sampson, Art Smith and Claudia Gabriel.

The high spot of social events was a banquet at the Fireside with decorations of small mums and Thanksgiving placecards and menus. Puritan schools was the central theme of the program with Ronald Walk as toastmaster. Miss Arta Lawrence and Mr. Roy Skeen were guest speakers.

Spring term activities consisted of election and initiation of new members and the annual spring picnic. New members taken in were: Seniors—Hildreth Colton, Jean Louise Taylor; Freshmen—Quentin Bowman, Jean Burch, Jane Williams, Earl Attebury, Marjorie Baird, Rose Hoosier, Berta Lloyd, Margaret McMullen, Betty Stein.

In the winter term activities got off to a flying start with the initiation of six new members: Kathryn Quast, Pauline Christensen, Ruth Johnson, Don Mattes, Faren Shafer, Charles Cook. Two old members returning brought the total membership up to 26. These two were J. B. Conoway and Miriam Moyer.

The crowning social event of the winter quarter was a club dance at which members and their guests danced to the music of a nickelodian under the general direction of Pauline Christensen. Patriotic programs and decorations of red, white and blue streamers carried out a George Washington theme. Dress was in formal attire. A picnic at Cove was an event of the Spring quarter.



Amanda Zabel  
Assistant Professor of English

## *Sigma Alpha Chi*

President:	-	-	-	-	Irma Klinghammer
Vice President:	-	-	-	-	Elinor Dawson
Secretary:	-	-	-	-	Lona Nelda Price
Advisor:	-	-	-	-	Amanda Zabel

Sigma Alpha Chi is the women's honor society of E. O. N. Membership is gained on the basis of the high scholastic and character achievements.

The beginning of the Fall Quarter saw only two members here from last spring. The initiation then doubled the membership. It was doubled again in the Winter Quarter. The larger number of initiates in the Spring Quarter almost tripled the membership.

At Homecoming each year Sigma Alpha Chi holds a luncheon for all alumni and Homecoming, it was changed to a breakfast. We had roll call of all members since the organization began. Those not there were answered for by members present.

The Yule Candlelight Hour was held, as was customary, on the last Sunday of the Fall Quarter. This year it was held in the E. O. N. Auditorium banked on one side with evergreen trees and on the other side was a living room scene. The traditional ceremony was a beautiful note to close the social activities of the quarter.

The Winter Quarter is not marked by any traditional activity. Due to the excessive boasting of Theta Delta Phi, Sigma Alpha Chi challenged them to an "Athletic Contest" in the gym. It was rather difficult to tell which organization was the winner but, because Theta Delta Phi was fed at the close of the activities, it will be only fair to say that Sigma Alpha Chi won in the athletic contest.

A combination of a business meeting and tea opened the Spring Quarter. The initiation, an elaborate affair, was held in the Kindergarten room in Ackerman Hall. The older members enjoyed the varied selections of poetry read by the initiates. They, in turn, were read to from the group's favorite author, Don Blanding.

The climax of the season was a joint banquet of Theta Delta Phi and Sigma Alpha Chi on the evening of the Coronation Ball. Dr. Howard was the guest speaker for the large gathering of "brain-trusters" and delivered a message very worthwhile.

## Theta Delta Phi

President:	-	-	-	Clifford Westensskow
Vice President:	-	-	-	Lloyd Murchison
Secretary:	-	-	-	Art Smith
Historian:	-	-	-	Earl Attebury
Advisor:	-	-	-	Ralph Badgley



Ralph Badgley, Instructor in Science and Mathematics.

Theta Delta Phi is the men's honorary scholastic fraternity on the E. O. N. campus and presents the aspects of cultivation and promotion of scholarship, fosters the development of honor and integrity, and encourages the growth of enlightened leadership.

Theta Delta Phi is fully incorporated as a national organization under the laws of the state of Oregon. They are represented on the campus by the Gamma Chapter. Although the organization is young, it is growing in membership and influence. They conclude this year with a record enrollment of active members numbering twenty one.

To give the balanced program direct application, they have engaged in various activities. Among the first was basketball. Perhaps one of the high lights of the season's sports was a general athletic tournament that took place between the Theta Delta Phians and the Sigma Alpha Chians, the girls honorary.

The fraternity meets every two weeks in a friendly meeting with their advisor, Mr. Badgley, where enlightening subjects that are of current interest are given intelligent discussion. They hold an annual convention to which Thomas Cook, Bill Sampson, and Dell Kennedy went as representatives. The convention was at Ashland, Oregon, April 15 and 16 this year. With this mixture of brain and brawn they were able to keep the national council in order.

The grand finale to their activities was the annual banquet with Sigma Alpha Chi on the eve of the coronation ball. Theta Delta Phi presided at the banquet, Clifford Westensskow acting as toastmaster. Dr. Howard was the speaker.



John Miller  
Director, Training School

## Campus Schoolmasters' Club

### Winter Quarter

Chairman:	-	-	-	-	Lloyd Murchison
Vice-Chairman:	-	-	-	-	Roy Babcock
Secretary-Treasurer:	-	-	-	-	Farren Shafer

### Spring Quarter

Chairman:	-	-	-	-	Bill Sampson
Vice-Chairman:	-	-	-	-	Quentin Bowman
Secretary-Treasurer:	-	-	-	-	Charles Cook

The men teaching students of E. O. N. found need for a well organized club to fit their profession. With this in mind, and with the aid of Dr. Howard and Mr. Miller, the Campus Schoolmaster's Club was formed. A constitution was drawn up and at the first business meeting officers were installed. General teaching problems were discussed, and the general air of the organization established.

The remainder of the winter term brought three educational talks by members of the faculty. Miss Moor spoke on the records made by the graduate men teachers. Miss Darby spoke on what men teachers should know about little children, and Miss Wear gave an interesting talk on general teaching techniques.

Being a very democratic organization, the men elected officers each term. The club has made outstanding progress in the first year of its existence and has set the stage for a fine organization in the future.

## *International Relations Club*

President:	-	-	-	-	Gilbert Kilpack
Vice President:	-	-	-	-	Howard Graham
Secretary:	-	-	-	-	Harrison Zurbrick
Librarian:	-	-	-	-	Claudia Gabriel
Assistant Librarian:	-	-	-	-	Marian Gehring
Advisor:	-	-	-	-	Joseph Gaiser



Joseph Gaiser  
Ass't. Professor of Social Science

The International Relations Club is a branch of a National Organization of the same name. It is sponsored by the Carnegie Endowment for International Peace, and is one of nearly 1200 clubs in colleges, universities, and normal schools throughout the world in thirty eight countries. This group meets every Wednesday noon in Ackerman Hall to discuss national and international affairs across the lunch table. Every student is welcome to bring a bowl of soup and join in the discussion.

The club was represented at the International Relations Club conference held at Reed College in Portland by Marian Gehring, Frances Singleton, Mr. Gaiser, Jack Eakin, Howard Graham, Gilbert Kilpack, James Voelz, and Ross Johnson. When the representatives returned, Gilbert Kilpack, Frances Singleton, Jack Eakin, Howard Graham, and Mr. Gaiser presented an assembly discussing various topics of importance at the conference.

The map committee, Ross Johnson, Chairman, Ruth Johnson, and Jean Taylor, obtained a world map which is used in connection with the study of what is taking place among nations.

The organization has come to no definite decisions, of course, but they have achieved their purpose, that of stimulating interest in international affairs and making its members more tolerant, more alert, and able to think for themselves.

"Of royal lineage"



"It must have been supin' she et"

"Women all over the Campus"



"Droop snoots"

"Basketball Champs"



"'Tra La' Spring has Come"

"They've been around"



"Ye Olde Editore"

"Everybody's Posin'"



"Post" Office

## *Music Organizations*

**CHORUS**

**ORCHESTRA**

**WOMEN'S SEXTET**

**MIXED QUARTET**

**FACULTY QUARTET**

**JAZZ TRIO**



**Violet Mills**  
Instructor in Music

The Chorus, under Miss Mills' direction, and with an enthusiastic membership of about thirty five, did fine work this year, presenting as its major performance the enjoyable Sacred Concert on the 16th of February. The Chorus also contributed the choir selections of Baccalaureate service and formed the nucleus of the massed student body chorus of Evensong at the end of the year. Mrs. Winifred Preston accompanied the group the autumn quarter, while Miss Rose Hoosier took that post the remainder of the year.

The E. O. N. Orchestra, directed by Miss Mills, deserves recognition as an organization which contributed greatly to the success and enjoyment of the several plays throughout the year, providing, as it did, classical and semiclassical selections appropriate to the occasions, as well as providing the effective music of commencement at the year's end. Faithful practice by its 15-20 members produced a noticeable improvement in the ensemble during the year, and credits the director. Miss Idamary Prouty filled the accompanist's chair, vacated at the end of the first quarter by Mrs. Winifred Preston.

An outstanding organization, and one of which E. O. N. is justly proud, the Women's Sextet made between 35 and 50 appearances, both locally and throughout the Valley, gaining recognition and enthusiastic praise wherever it sang. Beginning the year as strangers, the girls, under Miss Mills' coaching, had soon combined their voices in a remarkably close harmony. The sextet included Kathryn Quast, Wilda McKenzie, Jane Williams, Reba Kail, Pauline Christensen, and Gloria Swan, with Kathleen Williamson as accompanist.

A group which made several appearances during the winter and early spring quarters, the mixed quartet included Rose Hoosier, Jane Williams, Charles Cook, and Bill Gunn, with Kathleen Williamson accompanying. The quartet was organized especially to appear upon the Christmas and Sacred Concert programs and appeared later at two of the local churches.

Organized especially for the Christmas Candlelight Hour, the Faculty Quartet, including Professors Skeen, Gaiser, Kaiser, and Palm, proved such an enjoyable group, both to audience and participants, that it remained an active organization through the remainder of the school year, singing at several local events. Miss Hoosier was the accompanist.

Wilda McKenzie, Pauline Christensen, and Gloria Swan early in the school year formed a voluntary organization, which specialized in popular songs. The Jazz Trio, as the gay three came to be known, proved to be one of the most popular of the school's musical groups, both among the students and local townspeople, and was in constant demand as entertainment for meetings of local organizations.

## *The E. O. N. Pep Band*

Under the baton of our own Perry Caldwell, the band got off to an enthusiastic start early in the Fall quarter, providing a peppy backing for the football squad's successful season, and following it up with similar work during the basketball season in the Winter term.

The outstanding event of the year for the band was the annual concert in May. Including several full band numbers, very ably produced, as well as being interspersed with vocal and ensemble singing selections, it received enthusiastic applause from its audience and favorable recognition in the local papers.

Among its other activities, the band provided an impressive musical setting for the Academic Procession at the time of Dr. Howard's inauguration, and the distinctive processional and recessional of Evensong.

## *The Nature Club*

President	-	-	-	-	Helen Fedler
Vice-President	-	-	-	-	Catherine Scully
Secretary	-	-	-	-	Edna Mae Burress
Advisor	-	-	-	-	Elmo Stevenson

The nature club is an organization of those students interested in any phase of nature study. Their meetings have consisted in a great part of hikes to Morgan Lake in the winter, Dutch Springs, Mills Canyon for breakfast. At one of their most interesting meetings Mr. Cecil Ager spoke on photography. This organization gives an opportunity for students interested in nature to have a social time and study things which they are interested in.

## Alpha Rho Tau

President	-	-	-	-	Merrill Ainsworth
Vice-President	-	-	-	-	Helen White
Secretary	-	-	-	-	Don Mattes
Advisor	-	-	-	-	Anne Gilles



Anne Gilles  
Instructor in Art

Alpha Rho Tau is the art honorary at E. O. N. and this year has a number of activities to its credit. They sponsored two art exhibits, one a Print Show from Washington D. C. and the other the Prospectors Show of oils, and water colors from the central states. This spring they offered an exhibit of samples of the art classes for high school students.

In the fall quarter the treasury was raised by the making and selling of "whiskers", blue and gold streamers, for the football games. At Christmas time the club placed a Christmas wreath on each door.

Two initiations added to the club membership. One initiation carrying out an oriental theme was held in the winter term in the studio, the other in the spring quarter at the annual banquet, held in May at the Sacajawea Hotel.

In February a formal dance was given by Alpha Rho Tau. Programs decorations, and refreshments were in accordance with Washington's birthday.



ALVIN R. KAISER  
Instructor in English and Dramatic

## *Sock and Buskin*

"Bigger and Better" was the slogan for 1937-38 for Sock and Buskin, the school's dramatic organization. The club enjoyed the largest membership in its history, the most gratifying financial returns to its public performances, the largest number of plays produced, and the greatest mileage for its traveling company.

A one-act play, "The Mayor's Hose", was performed in the middle of the gymnasium floor during the Intermission of the Homecoming Dance. A skit, "Eliza Crossing the Ice", was a between-the-halves feature of the Homecoming game, October 21. Both productions carried the Sock and Buskin brand.

A school-room romance, "Remember The Day", was the club's Fall term production, with Pauline Christensen, Don Jasper, and Charles Van Koten heading a large cast.

Moliere's "The Doctor In Spite of Himself" was presented on a platform flanked by tables in the gymnasium on March 4. The Second act of the play was later presented to high school audiences in Imbler, Elgin, Joseph, Lostine, Wallowa, Enterprise, Union, and Cove. Title role of the play was played by Charles Cook, other cast members being Bill Sampson, Charles Van Koten, Kathleen Williamson, Iris Lyon, Powell Graham, and Reba Kail. Bill Gunn, Tom Cook, George Hill, Bob Somes, and Howard Dixon appeared in the original performance of the play but did not accompany the traveling company.

Lulu Vollmer's "Sun-up" gave Catherine Scully a powerful character role in the Spring play. Hank Anderson, Bill Sampson, Charles Van Koten, Tim Brinton, Ruth Hale, John Miller, and Dell Kennedy were other members of the cast of the mountaineer drama.

Director of all Sock and Buskin productions was the club's faculty adviser, Alvin Kaiser, with Roy Babcock, president of the club, acting as production manager of all the plays.

## *The Beacon*

E. O. N.'s student newspaper had an unusually successful year, publishing fourteen editions totalling nearly ten thousand copies. Each edition was published on schedule and was self-supporting, with Alvin Kaiser as adviser and Charles Cook as Managing Editor for the Fall and Winter terms and Frances Singleton as Managing Editor for the spring term and Bill Sampson as Advertising Manager, the Beacon functioned as an unusually effective student body activity. A policy of appointing guest editors, a new one for each issue of the paper, gave recognition to those qualified for the appointment and allowed many interested students to gain journalistic experience. Those who served as issue editors are: Frances Singleton, Ray Weatherspoon, Connie Finley, Vivian Hamman, Jim McGill, Quentin Bowman, Rose Hoosier, Gilbert Kilpack, Jeanette Strand, Iris Lyon, Icel Collins, J. B. Conway.

Betty Martin, '36, served as Alumni Editor for the editions sent out to E. O. N. graduates. Five hundred copies of alternate editions were sent out to the alumni.

Each edition of the Beacon reached 75 Eastern Oregon high schools.

Leon Berry, shop foreman of the Eastern Oregon Review, was made an honorary staff member in recognition of his fine cooperation with the Beacon Staff.

## *The Eon*

The 1938 Eon, somewhat more elaborate than other recent year-books published by the Associate Students of the Eastern Oregon Normal School, met with delayed financial backing, due to Mr. Roosevelt's recession, and failed to appear until nearly a month after Commencement.

All of the articles, snapshots, etc., were voluntary contributions and have been published in their original form in order to present E. O. N. student activity as E. O. N. students see them. The book is a product of the work of the entire student body and not an adaptation made by the staff.

The staff of the 1938 Eon is as follows: Adviser—Alvin Kaiser;

Managing Editor—Charles Cook; Financial Manager—Bill Sampson; Senior section—Shirley Zion, Genevieve Hook; Freshman section—Rose Hoosier, Eleanor Tischler; Organizations—Frances Singleton, Eleanor Tischler; Snaps—Reba Kail, Nola Green; Athletics—Charles Van Kcten; Humor—Jim McGill.



FACULTY IN ROBES

The most important single event of the 1937-38 school year was the installation of Dr. C. A. Howard as second President of the Eastern Oregon Normal School on Tuesday, December 14, 1937. The gymnasium was filled to capacity with an audience composed of the Oregon State Board of Higher Education, presidents and representatives from all the institutions of higher learning in the Northwest, students and townspeople.

The impressive ceremony of inauguration included a processional of scores of robed dignitaries, inspiring address by Bishop William P. Remington, Mrs. Maybele Romig, Superintendent of Schools in Baker County; Joseph Gaiser, assistant Professor of Social Science at E. O. N.; Willard B. Marks, President of the Oregon State Board of Higher Education, and Dr. Howard. Presiding over the ceremonies was Dr. Frederick M. Hunter, Chancellor of the Oregon State Board of Higher Education.



MILDRED PIERCE  
Executive Secretary



ANN HOSPERS  
Instructor



ETHEL JOHNSON  
Instructor



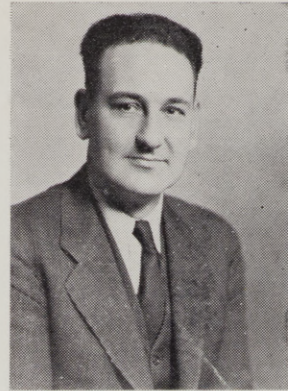
EVA WEAR  
Instructor



MILDRED H. LOWELL  
Librarian



CLARA STROUD  
Instructor



ROY L. SKEEN  
Asst. Prof. of Psychology



BETTY MARTIN  
Secretary



ELIZABETH H. HARRIS  
Instructor



EDITH DARBY  
Asst. Prof. of Ed.



EMMA MULLEN  
Health Nurse

# Football



Quinn, Coach

Olsen, left half \*

Blackman, full \*

Horn, right half \*

Long, tackle

Petterson, quarter \*

Ott, full

Voruz, guard

Robinson, line

Drager, tackle \*

McClay, end

Somes, guard

Woodard, tackle\*

Murray, half

Miller, guard

Attebury, end

Ervin, line

McGill, line

Marquis, guard \*

Walk, end \*

Jenkins, center

Bohnenkamp, tackle

Graham, quarter

Hobbs, center \*

Van Koten, manager

\* Regulars, plus Fowler, guard, not pictured.

## Football Team Personnel

MELVIN "Power House" OLSEN, Longview, Washington. Weight 180; regular left half; two year letterman. His hard tackling on defense and power drives on offense made him one of most valuable and truly the toughest man on the team. He has played in every quarter in every game for two years with never an injury. A real record.

FRED PETTERSON, Seattle, Washington, regular quarter. Weight 165, 3 year letterman. A triple threater and a valuable man at calling signals. He scored 58 points in the 1937 season.

RON "STORK" WALK, North Powder, regular end. Weight 190, two year letterman. One of the most effective defensive men and truly a pass "snatcher" on offense. Didn't miss a pass all season.

"BUCK" FOWLER, La Grande. Regular right guard. Weight 195, three year letterman. Backed up the line on defense and did a great job. A good blocker on offense. (No picture)

VIRGIL HORNE, Cottage Grove. Regular right half. Weight 155, two year letterman. Despite his light weight, he was the shiftiest and one of the hardest men on the squad to stop. Best on reverses. Averaged 6 yards to the run.

BILL THOMAS, La Fontaine, Indiana, Regular end. Weight 195. One year letterman. Was plenty tough on both offense and defense. Good all around player.

TOM BLACKMAN, Walla Walla, Washington. Regular fullback. Weight 196. One year letterman. Besides his line bucking ability he showed he knew how to pass and kick that ball. Did most of the passing.

WAYNE WOODARD, The Dalles. Regular tackle. Weight 185. One year letterman. Played a heads-up game on defense and offense. Will be outstanding next year.

"EM" HOBBS, Salem. Regular Center. Weight 190. One year letterman. Was good man to stop offensive drives through the center. Always centered that ball just right. A rough and tough man. Also showed ability at end.

"LONG" DRAGER, Salem. Regular Tackle. Weight 200. One year Letterman. A tough man to get through. Played every game all season. A good all around player.

BOB MARQUIS, Vale. Regular guard. Weight 180. One year letterman. A good aggressive player despite his lack of height. Played every game.

HERB VORUZ, La Grande. Guard. Weight 155. One year letterman. Desipte his light weight, he showed he was a good man to go in and fill a vacancy in the line.

POWELL GRAHAM, Milton-Freewater. Quarter. Weight 155. One year letterman. A hard driving ball hawker. Saw plenty of action and showed possibilities. Should be outstanding man next year.

LELAND JENKINS, Athena. Center. Weight 175. One year letterman. Saw lots of action. Played best game against B. J. C. Great possibilities for next year.

GEORGE OTT, Portland. Fullback. Weight 177. One year letterman. A hard driver on offense. Always good for three or four yards.

"DUKE" LONG, Pocatello. Tackle. Weight 194. One year letterman. Played a little at end and showed better possibilities in the line. A good tough man.

JACK McCLAY, La Grande. End. Weight 167. One year letterman. A good all around player despite the light weight. Saw plenty of action.

HENRY MILLER, Union. Guard. Weight 171. One year letterman. A good drop kicker. Should be a valuable man next year.

LESTER ROBINSON, Union. Half. Weight 175. One year letterman. Good ball carrier with plenty of speed. Hope to see him back next year.

Other men who, even though they didn't make their letters, should not be left out of the 37 football hall of fame because of their untiring efforts, and demonstrated ability are:

Don Murray, Milton, Halfback.

Milton Doherty, La Grande, End.

Ed Attebury, Stanfield, End.

Jim Ervin, La Fontaine, Indiana, Line.

Jim McGill, Line.

Bob Somes, Line.

Bill Bohnenkamp, La Grande Tackle.

## Summary of Season

With five games won, one tied and one lost, the E. O. N. Mountaineers under Coach Bob Quinn, turned in a season we can truly be proud of. In fact, the best in the history of the school.

They were a hard driving smooth clicking team, and gave the local spectators a good many thrills in the fine home games played on the local high school turf.

The first three games of the season saw E. O. N. victorious by long margins, but the fourth with Lewiston, proved that they still held their old "jinx" over us. Lewiston with 3 minutes to go ran up two touchdowns to be the only team to tie us. The next weekend, the boys retaliated and took Whitworth to the tune of 31 to 0. The only defeat of the season came at the hands of the University of Oregon Frosh with a much heavier and a much fresher team. They caught our boys in a late season slump. But Quinn's men showed they had real stuff by coming back in the third quarter and driving over a score.

The relative game scores, we are proud to present:

### SUMMARY OF SEASON

E.O.N. 61	Oregon Institute of Tech .....	0
E.O.N. 12	Gooding College .....	0
E.O.N. 14	College of Idaho * .....	4
E.O.N. 19	Lewiston Normal .....	19
E.O.N. 31	Whitworth College .....	0
E.O.N. 6	University of Ore. Frosh .....	19
E.O.N. 25	Boise Junior College .....	7
	<hr/>	<hr/>
168		49

(\* Played at Baker)

## *Basketball Season Summary*

With five lettermen back, Coach Quinn started out the season with the best prospects in many a year.

A narrow-margin defeat by the Oregon State varsity in a early season game showed Coach Quinn that he really did have a nucleus for an outstanding team.

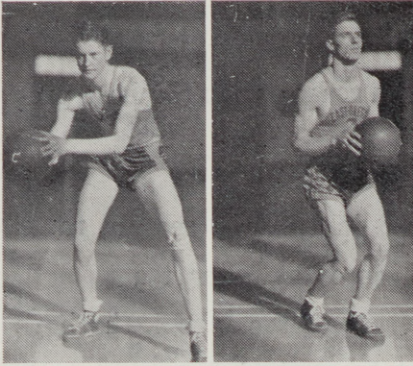
Besides the hopes of having the best team in the history of the school, the boys and Coach Quinn had an intercollegiate tournament at Salem to look forward to entering. The twenty pre-tournament games saw E. O. N. victorious in fourteen. The six defeats came as the result of last minute breaks for the opponents and by only one, two and three points the majority of the time. The boys were credited with victories over the strongest contestants for the northwest conference crown. They included Pacific, Willamette and most important of all a 77 to 61 victory over Whitman. After winning this decisive victory over Whitman, the boys left immediately for the Salem tournament where they played Southern Oregon Normal School. Here again those last minute breaks went against them and S. O. N. S. came from behind in the closing minutes to eliminate the mountaineers by a mere four points.

Although not state collegiate champs, as Coach Quinn and the boys had hoped, they did constitute a team that will go down in history as one of the strongest E. O. N. and all Eastern Oregon has ever owned.

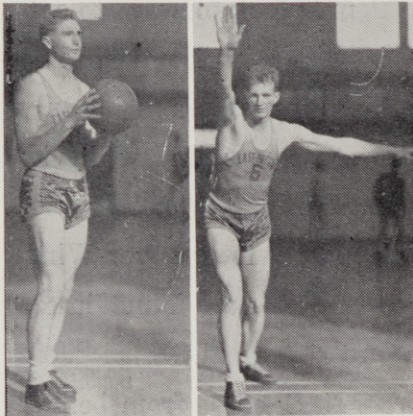
### SUMMARY OF SEASON

E.O.N. 59	C.C.C. ....	36
E.O.N. 53	Pendleton .....	29
E.O.N. 80	Wallowa .....	43
E.O.N. 76	Joseph .....	27
E.O.N. 27	O. S. C. ....	37
E.O.N. 51	Lewiston .....	37
E.O.N. 41	Lewiston .....	42
E.O.N. 41	Multnoma Club .....	44
E.O.N. 31	Lewiston Normal .....	42
E.O.N. 39	Lewiston Normal .....	37
E.O.N. 51	College of Idaho .....	53
E.O.N. 61	College of Idaho .....	48
E.O.N. 48	Nazarene College .....	56
E.O.N. 48	Nazarene College .....	37
E.O.N. 59	College of Idaho .....	50
E.O.N. 32	Willomette U. ....	29
E.O.N. 45	Pacific U. ....	37
E.O.N. 32	Nazarene College .....	29
E.O.N. 38	Nazarene College .....	42
E.O.N. 77	Whitman .....	61
E.O.N. 45	S. O. N. S. ....	49
1034		865

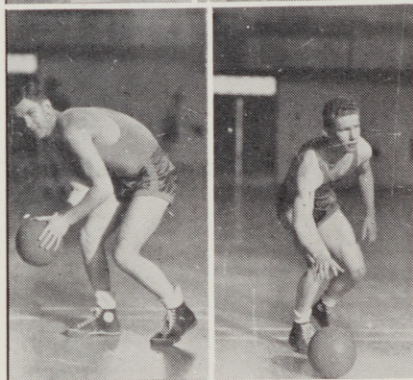
## TEAM PERSONNEL



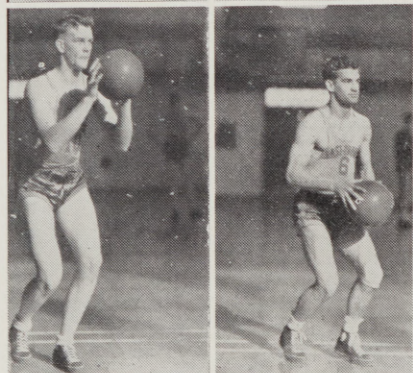
HANK ANDERSON, Burns, Center. One year letterman; height 6 ft. 7 in. All state center. High scorer of the season with 242 points. Dead eye with his pivot shot. A good player. Should be outstanding next year.



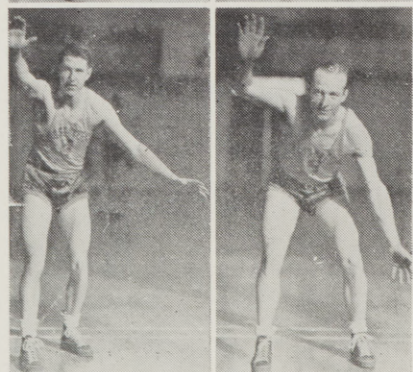
JIM ERVIN, La Fontaine, Indiana, Guard. One year letterman; height 5 ft. 11 in. Played good steady ball regardless of when he was put in. A valuable man to the squad.



LELAND JENKINS, Athena, Guard. One year letterman; height 6 ft. Saw plenty of action as a substitute for anybody on the team. A good passer. Will be among first five next year.



WILBUR KIDDER, Pendleton, forward. One year letterman; height 6 ft. 6 in. A good man on the backboard, and an outstanding defensive and offensive man.



EMERY HOBBS, Salem, Guard. Two year letterman; height 6 ft. Although handicapped by a broken foot, he got into stride in time for the Salem tournament. A good long shot and a close checking defensive man. A cool headed player.

MEL OLSEN, Longview, forward. Two year letterman; height 5 ft. 11 in. A clever ball handler, good shot and a fast allaround player.

KNOX PARKER, La Grande, forward. Two year letterman; height 6 ft. 2 in. An outstanding defensive man and a good ball hawk. Saw plenty of action at all positions.

FRED PETTERSON, Seattle, Guard. Three year letterman; height 5 ft. 10 in. A dead eye on offense when "on". A good all around player.

FRANK SMITH, La Grande, forward. One year letterman; height 5 ft. 9 in. Clever offensive and defensive man. Valuable man to the squad. Should be outstanding next year.

BILL THOMAS, La Fontaine, Indiana, Guard. Two year letterman; height 6 ft. 1 in. One of the best defensive men on the team. Never a high scorer but an excellent all around man. Hopes to be back next year.

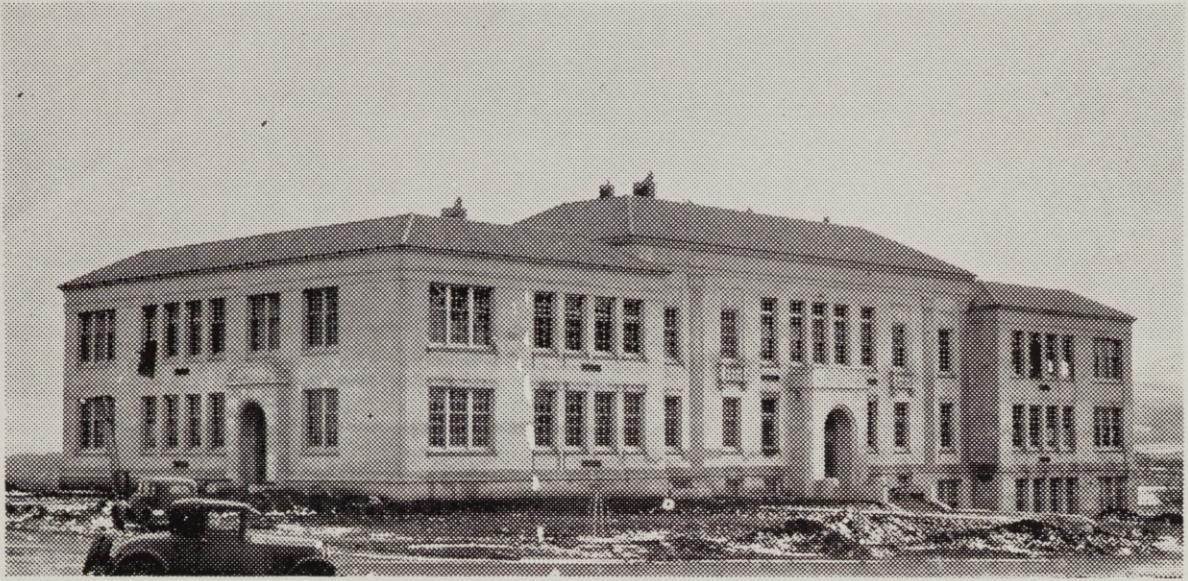
Other men, although not letter winners, that should be given credit here for their fine spirit and help in developing this outstanding team are:

Dell Kennedy, La Grande, height 5 ft. 10 in.

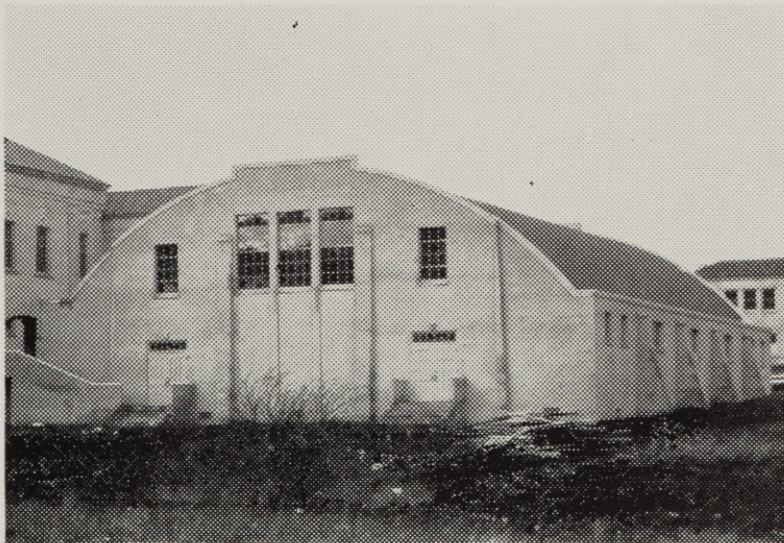
Gene Schultz, La Grande, height 5 ft. 9 in.

Ed Attebury, Stanfield, height 6 ft.

Hank Miller, Union, height 5 ft. 11 in.



ACKERMAN HALL



GYMNASIUM

## *Joke Section*

Jim McGill worked long and hard collecting antiques for this department and inventing many amusing features. Lack of money for this publication meant lack of space, so the jokes are on Jim.

However, here is an original, set down here to observe the tradition of a joke section in every year book:

A Mountaineer Senior awoke one morning to find one eye swollen shut.

"Egad!" he said, amazed, "I must have insulted the girl of my dreams".

AND SO—

The Class of 1938 bids E. O. N.

GOODBYE



