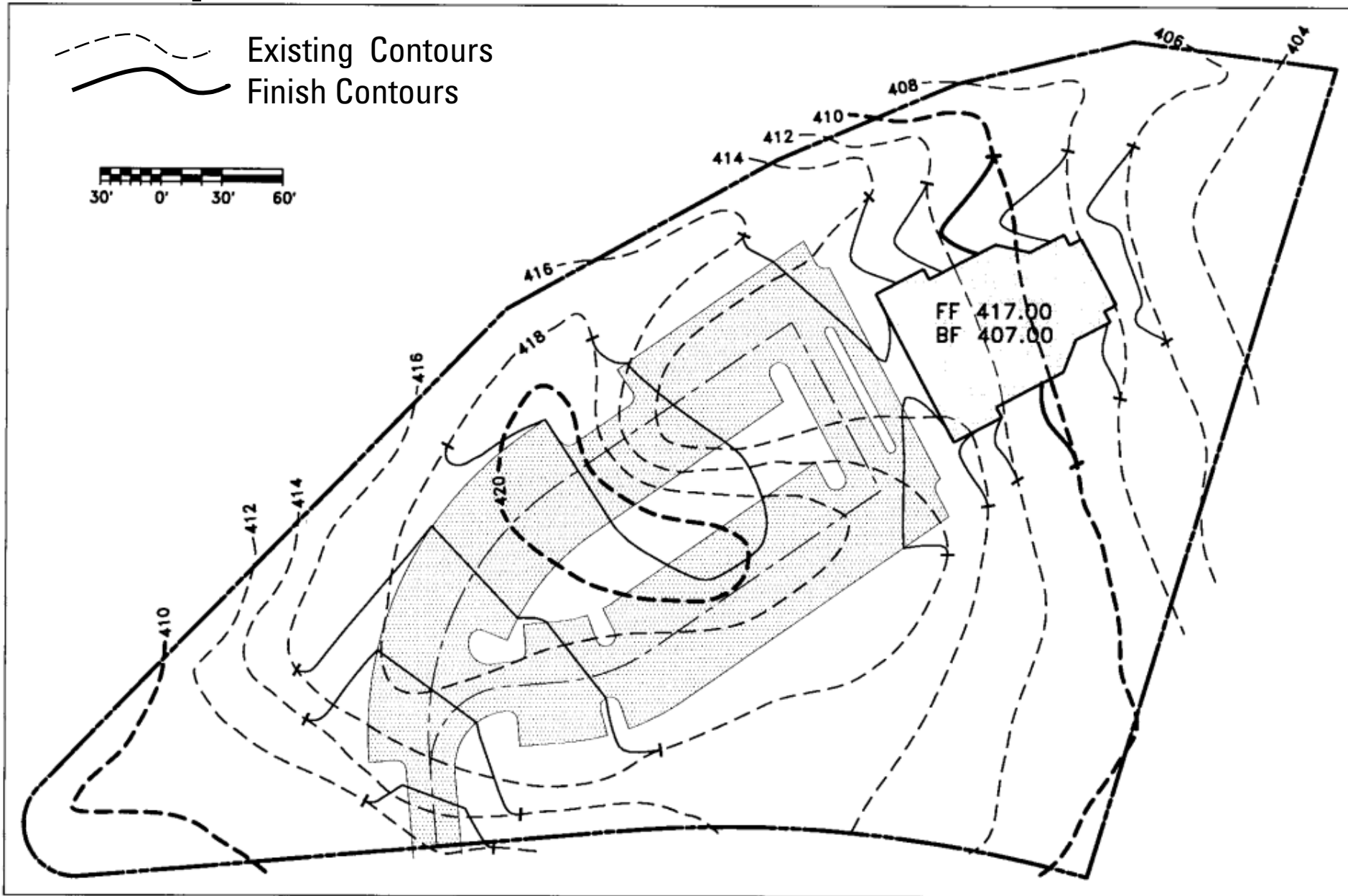


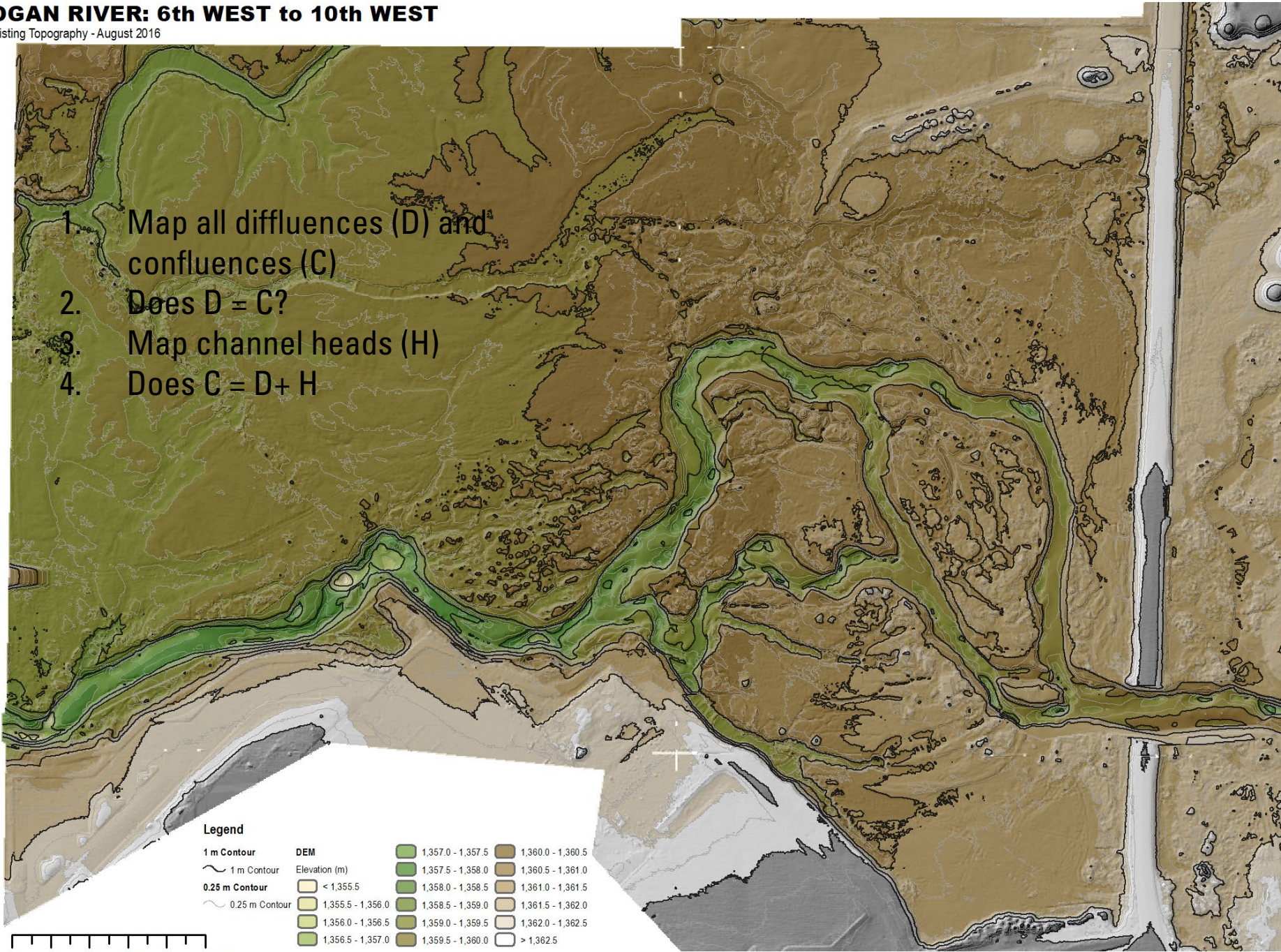
# A Simple Grading Plan – Homework



**FIGURE 24.37** Grading plan. 1. Draw the Zero Line; 2. Color Cut Red & Fill Blue; 3. Denote limits of grading

**LOGAN RIVER: 6th WEST to 10th WEST**

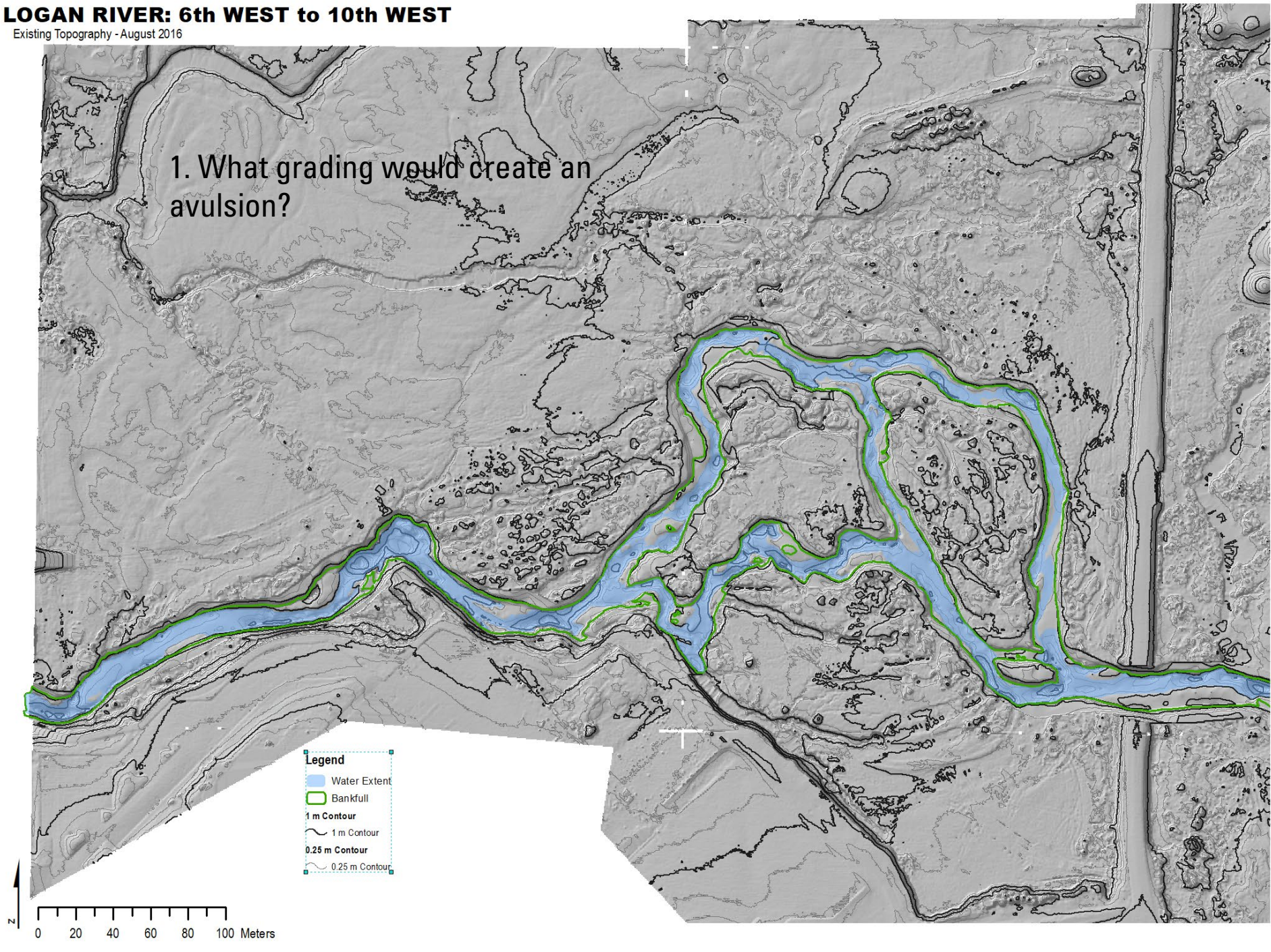
Existing Topography - August 2016



**LOGAN RIVER: 6th WEST to 10th WEST**

Existing Topography - August 2016

1. What grading would create an avulsion?

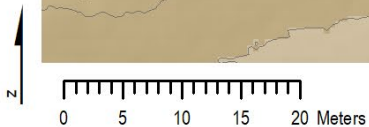


# LOGAN RIVER: 6th WEST to 10th WEST

Existing Topography - August 2016

1. Grade a riffle crest in to raise from  
~1357.5 to 1359.15 @ thalweg

2. Deepen pool from ~1356.3 to 1355.3  
@ expand



## Legend

1 m Contour

1 m Contour

0.25 m Contour

0.25 m Contour

DEM

Elevation (m)

< 1,355.5

1,355.5 - 1,356.0

1,356.0 - 1,356.5

1,356.5 - 1,357.0

1,357.0 - 1,357.5

1,357.5 - 1,358.0

1,358.0 - 1,358.5

1,358.5 - 1,359.0

1,359.0 - 1,359.5

1,359.5 - 1,360.0

1,360.0 - 1,360.5

1,360.5 - 1,361.0

1,361.0 - 1,361.5

1,361.5 - 1,362.0

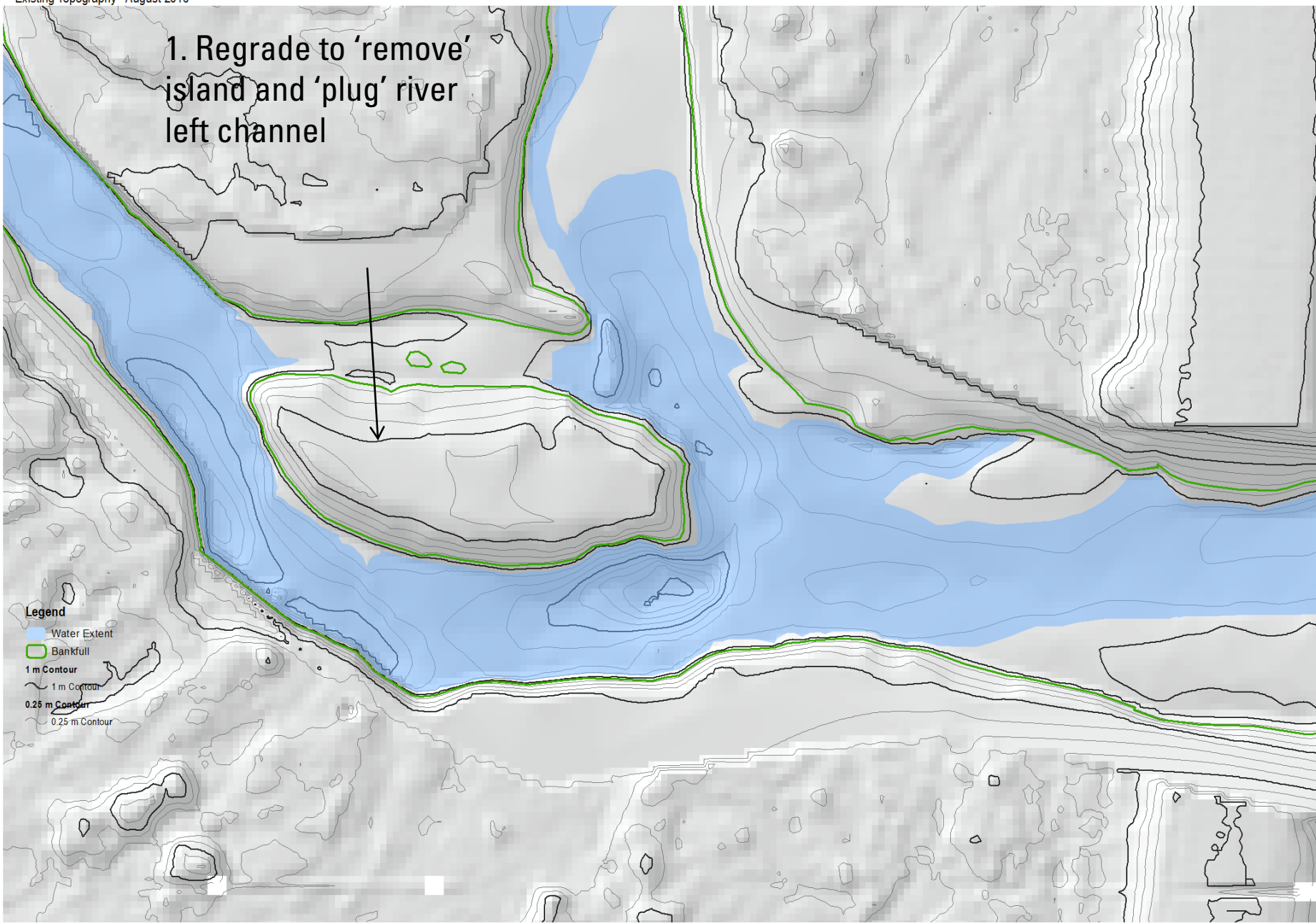
1,362.0 - 1,362.5

> 1,362.5

# LOGAN RIVER: 6th WEST to 10th WEST

Existing Topography - August 2016

1. Regrade to 'remove'  
island and 'plug' river  
left channel



## Legend

Water Extent

Bankfull

1 m Contour

1 m Contour

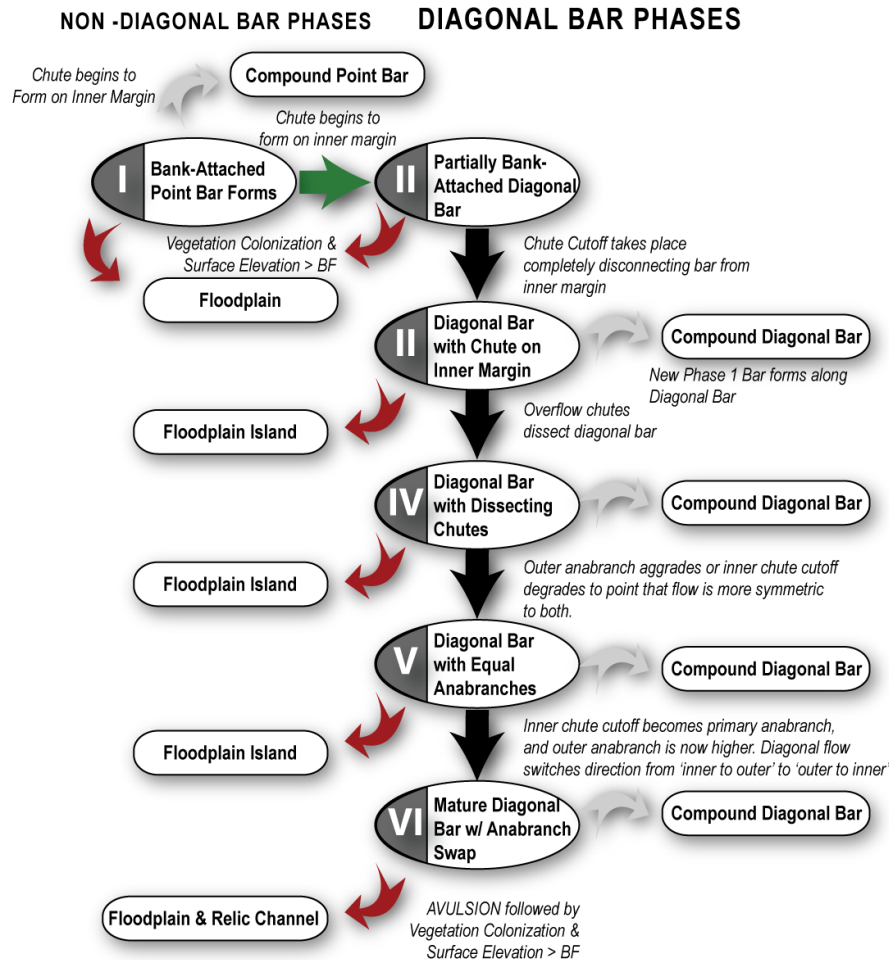
0.25 m Contour

0.25 m Contour

0 5 10 15 20 Meters

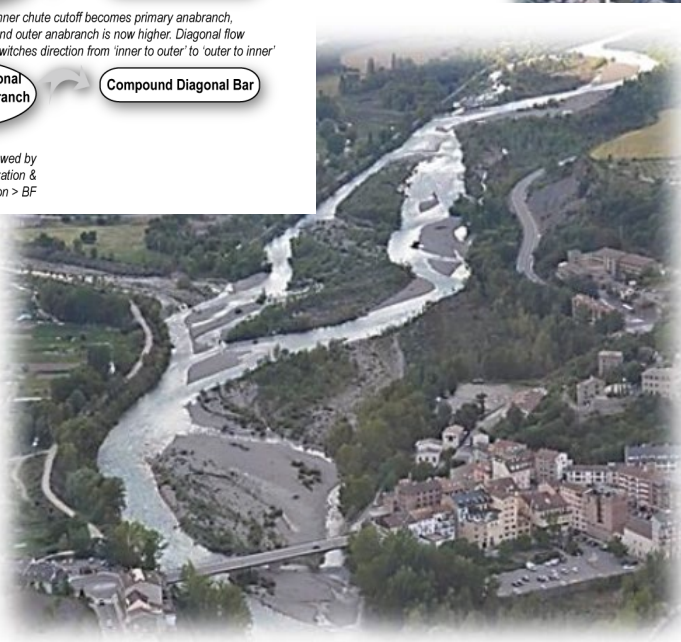
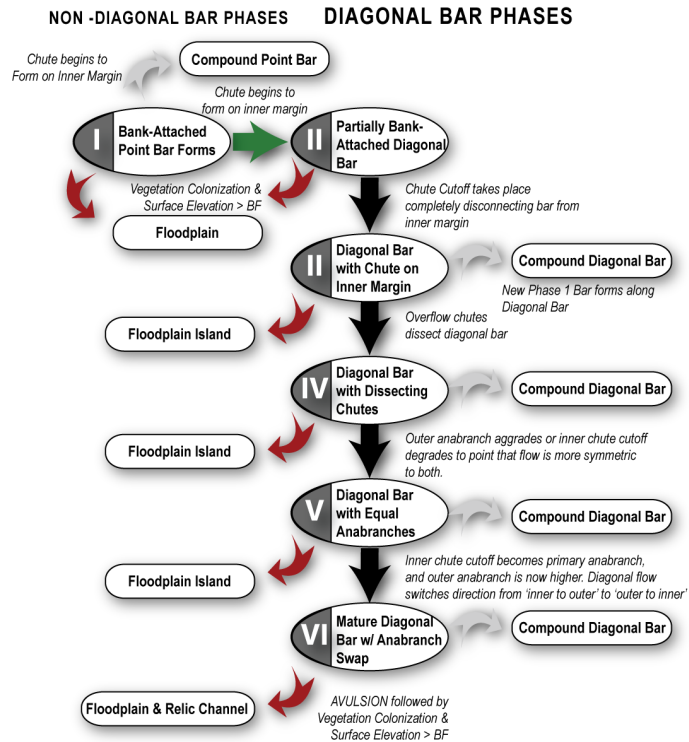
# Identify Bar, & Stages

Map one or more Diagonal bar(s) and identify its stage



# Identify Bar, & Stages

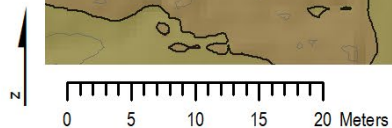
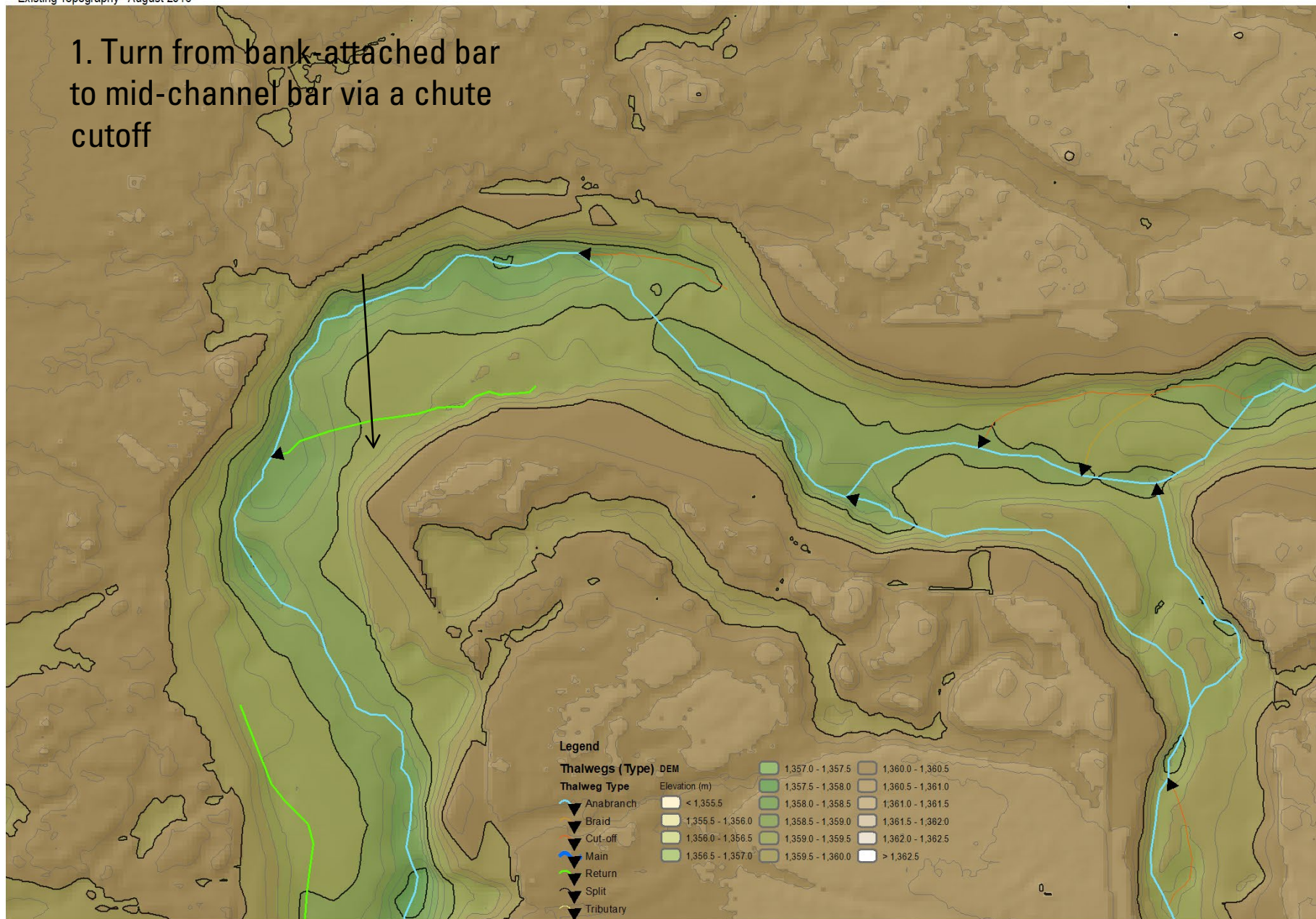
Map one or more diagonal bar(s) and its stage



# LOGAN RIVER: 6th WEST to 10th WEST

Existing Topography - August 2016

1. Turn from bank-attached bar to mid-channel bar via a chute cutoff



1 m Contour  
1 m Contour  
0.25 m Contour  
0.25 m Contour

# LOGAN RIVER: 6th WEST to 10th WEST

Existing Topography - August 2016

