

B^b Part

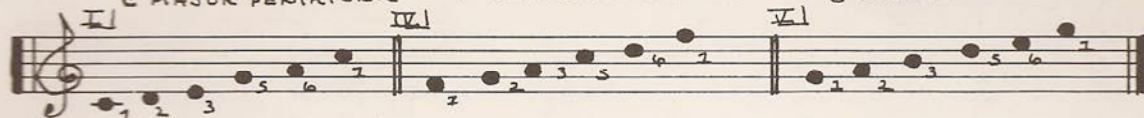
C MAJOR ETUDES: (C Blues)

1.

C MAJOR PENTATONIC

F MAJOR PENTATONIC

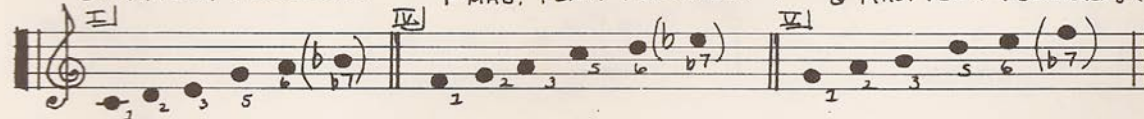
G MAJOR PENTATONIC



C MAJ. PENT. + LOWERED (7th)

F MAJ. PENT. + LOWERED (7th)

G MAJ. PENT. + LOWERED (7th)



gagz Anyone...? Willie Thomas