

C Bass

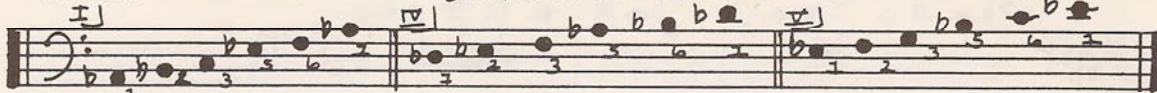
A^b MAJOR ETUDES: (A^b Blues)

#11

A^b MAJOR PENTATONIC

D \flat MAJOR PENTATONIC

EB MAJOR PENTATONIC



#1. A^b7

A^b7

D^b7

E^b7

A^b7

E^b7

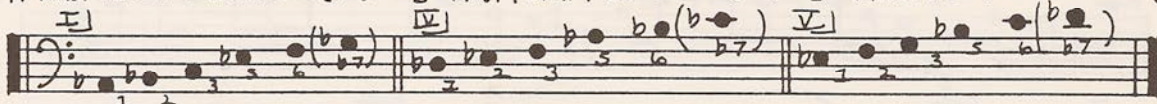
#2.

Handwritten musical score for three staves. The first staff is in bass clef with a key signature of two flats (B-flat and E-flat) and a common time signature (C). It contains a sequence of notes with various ornaments (accents, slurs, and breath marks) and rests. The second and third staves are in treble clef and continue the melodic line with similar ornaments. The piece concludes with a double bar line and repeat dots.

Ab MAJ. PENT. + LOWLRED (TH)

D^b MAJ. PENT. + LOWERED (7th)

E^b MAJ. PENT. + LOWERED (7th)



#3.

Handwritten musical score for three staves. The first staff is in bass clef with a key signature of two flats (Bb, Eb) and a common time signature (C). It contains a melodic line with various ornaments (accents, slurs, and grace notes) and rests. The second and third staves continue the piece, with the third staff featuring a double bar line and a repeat sign. The notation is handwritten and includes many slurs and ornaments.

Sings Anyone? Willie Thomas
 46B
 Copyright © 1979 Willie Thomas
 All Rights Reserved