

9:

C. Bass

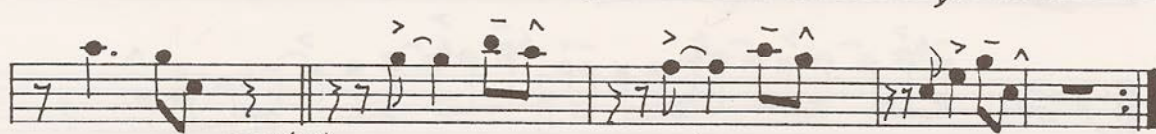
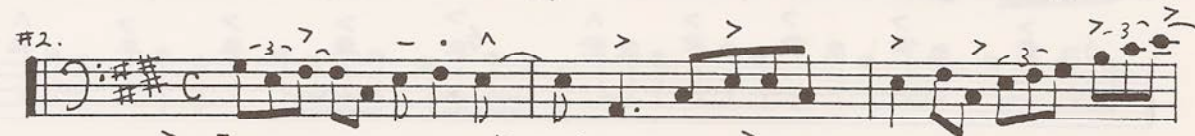
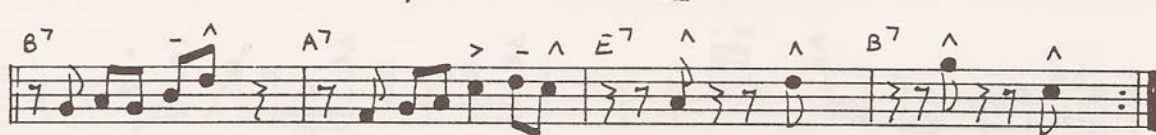
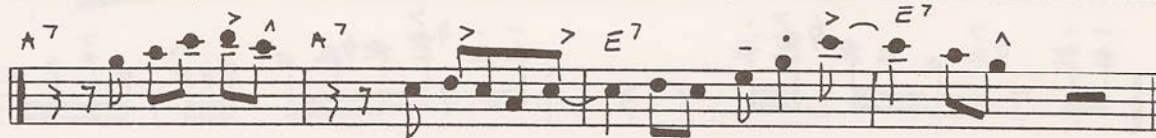
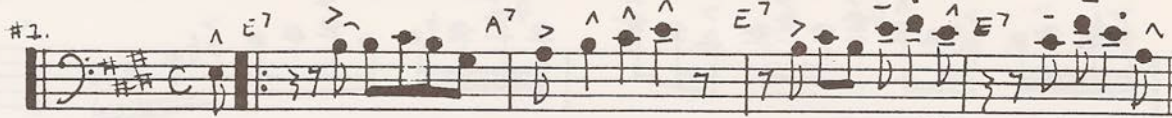
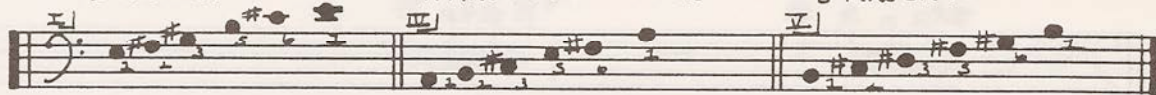
E MAJOR ETUDES: (E Blues)

7.

E MAJOR PENTATONIC

A MAJOR PENTATONIC

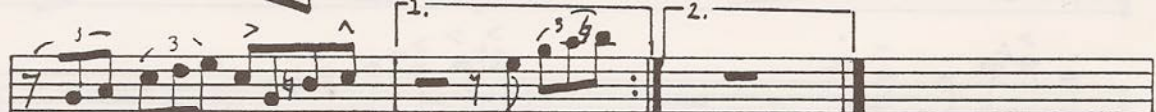
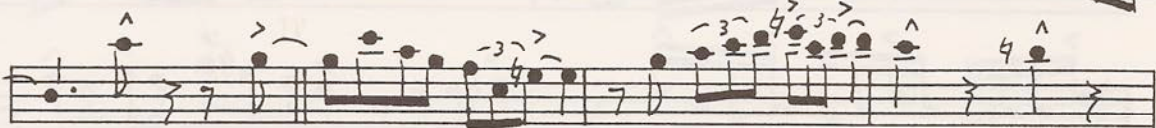
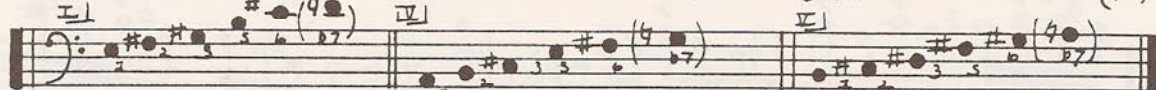
B MAJOR PENTATONIC



E MAJ. PENT. + LOWERED (7th)

A MAJ. PENT. + LOWERED (7th)

B MAJ. PENT. + LOWERED (7th)



Jazz Anyone ...? Willie Thomas