

2:

C. Bass

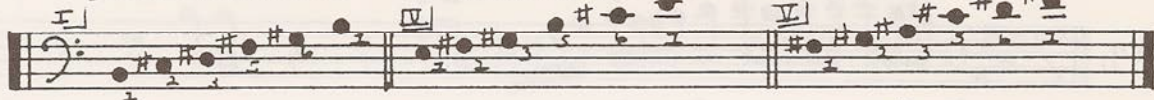
B MAJOR ETUDES: (B Blues)

8.

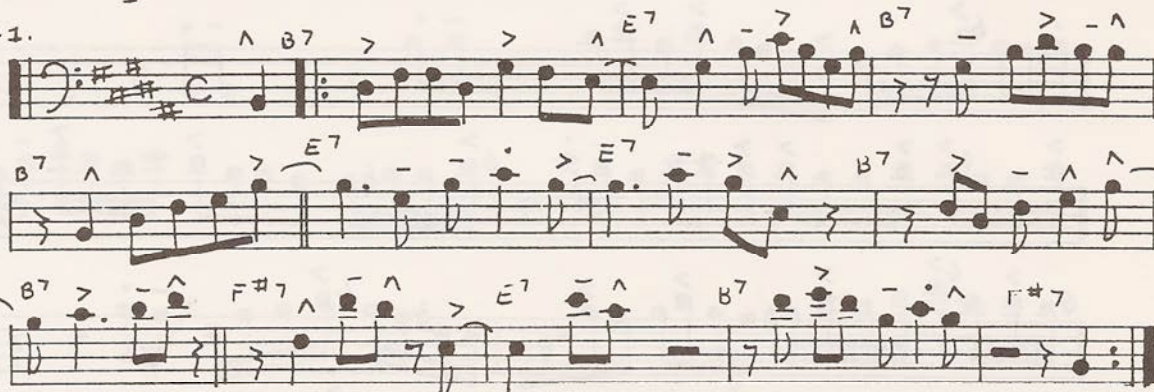
B MAJOR PENTATONIC

E MAJOR PENTATONIC

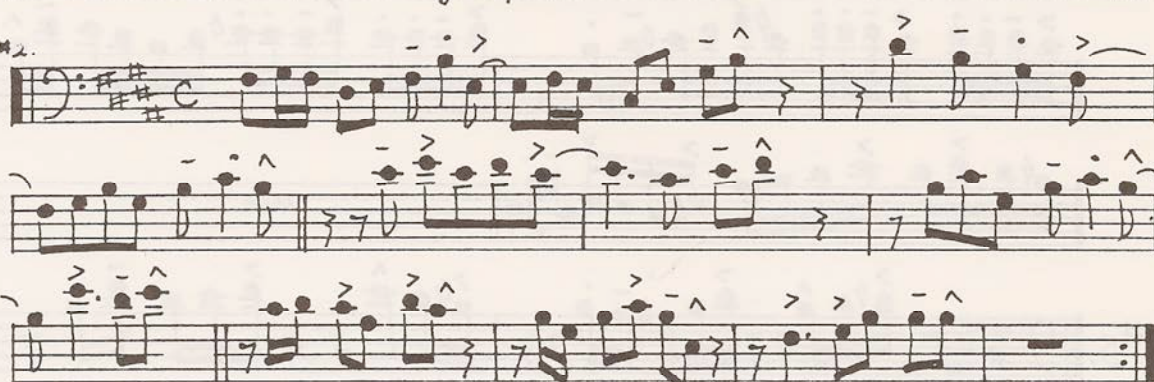
F# MAJOR PENTATONIC



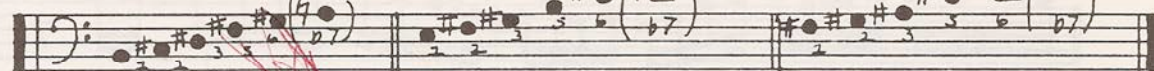
#1.



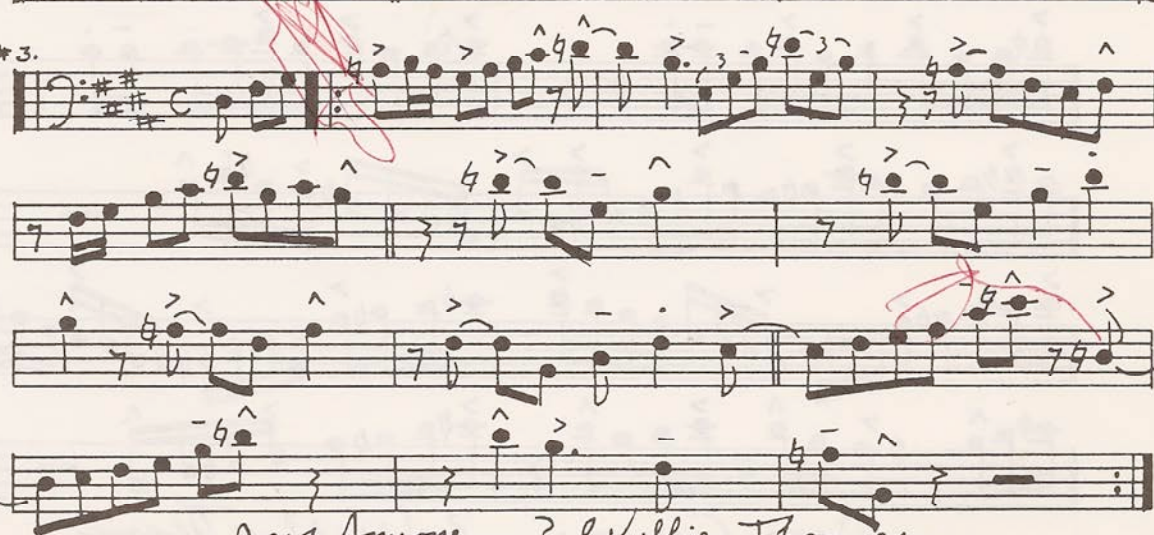
#2.



B MAJ. PENT. + LOWERED (7th) E MAJ. PENT. + LOWERED (7th) F# MAJ. PENT. + LOWERED (7th)



#3.



Jazz Anyone --? Willie Thomas