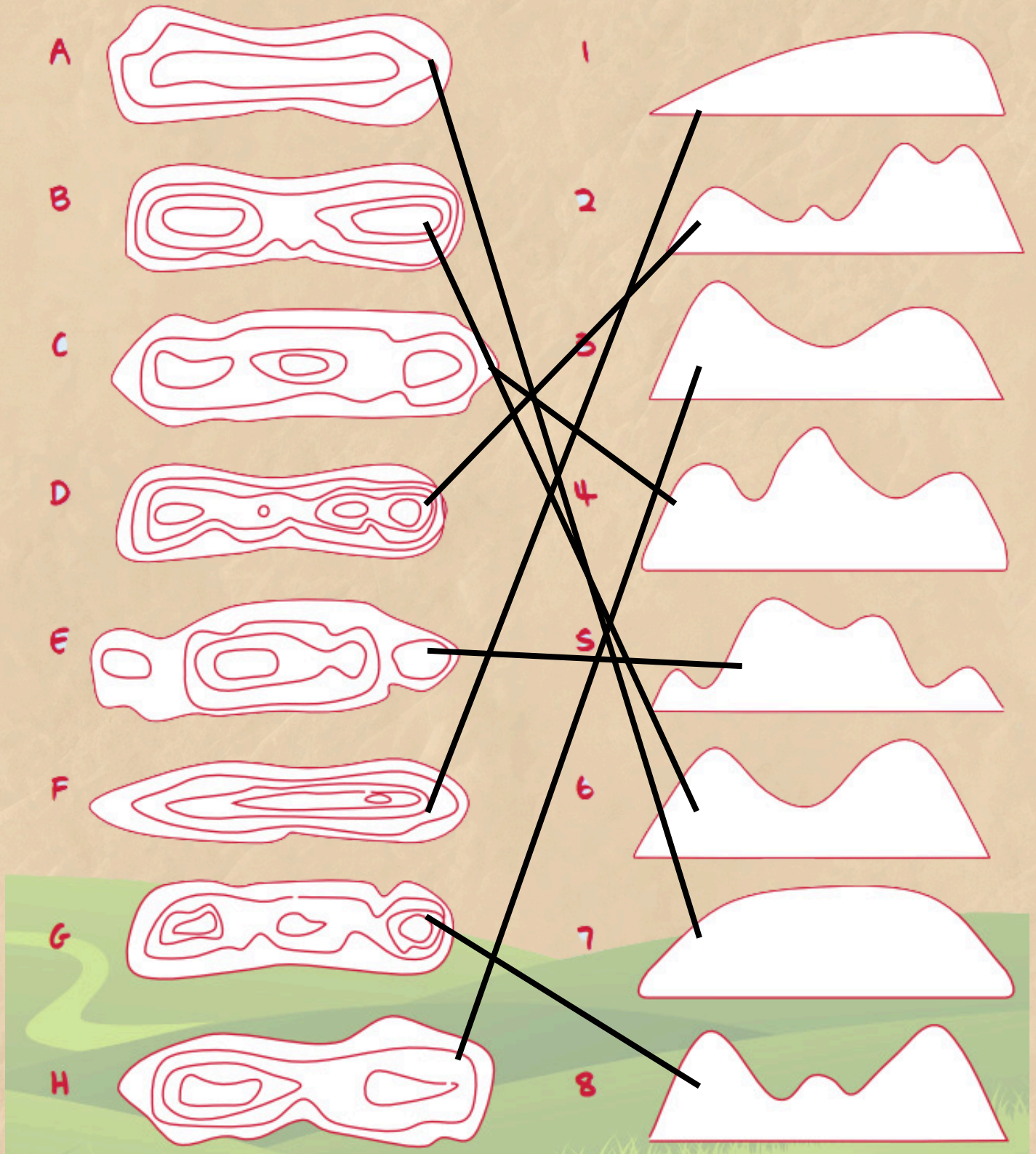


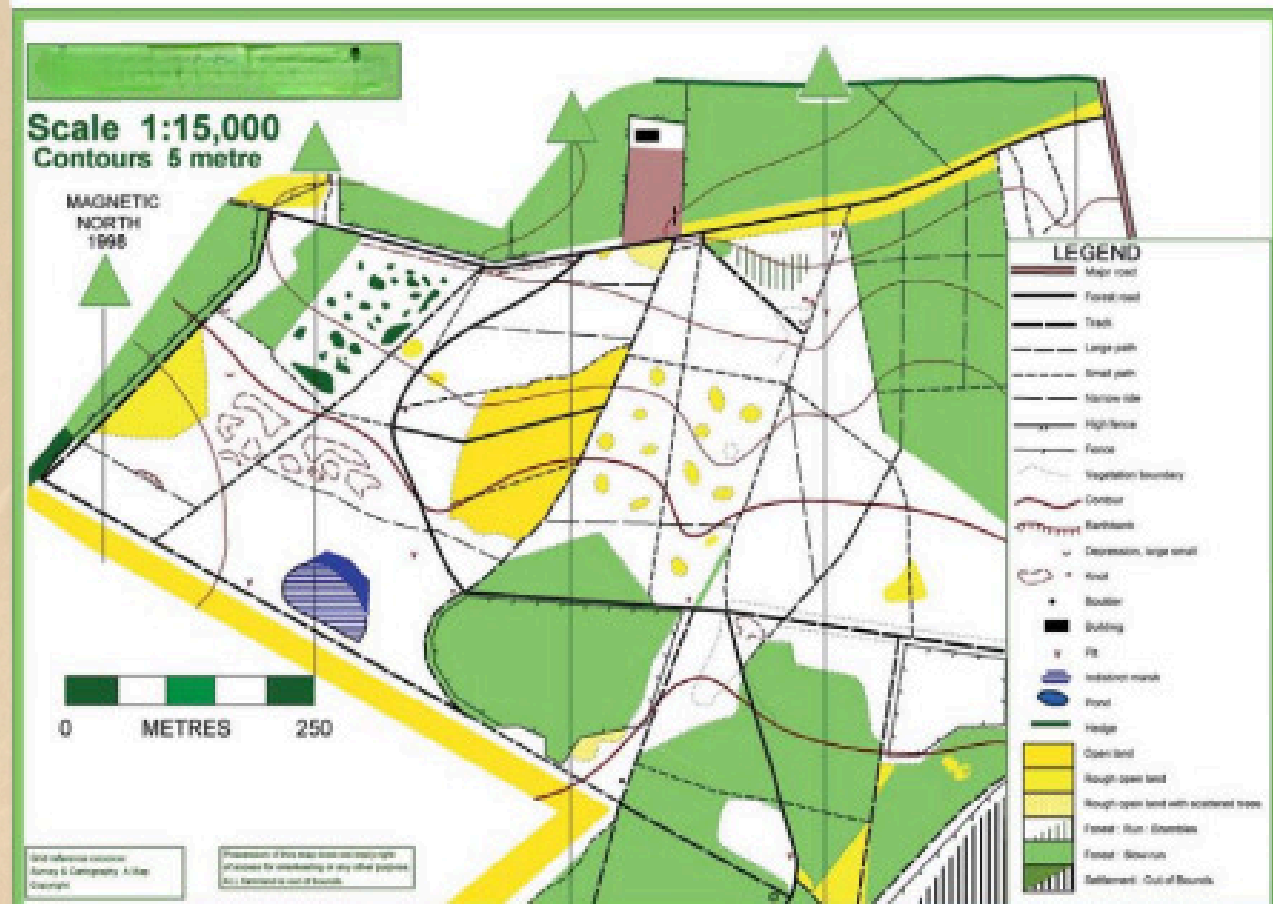
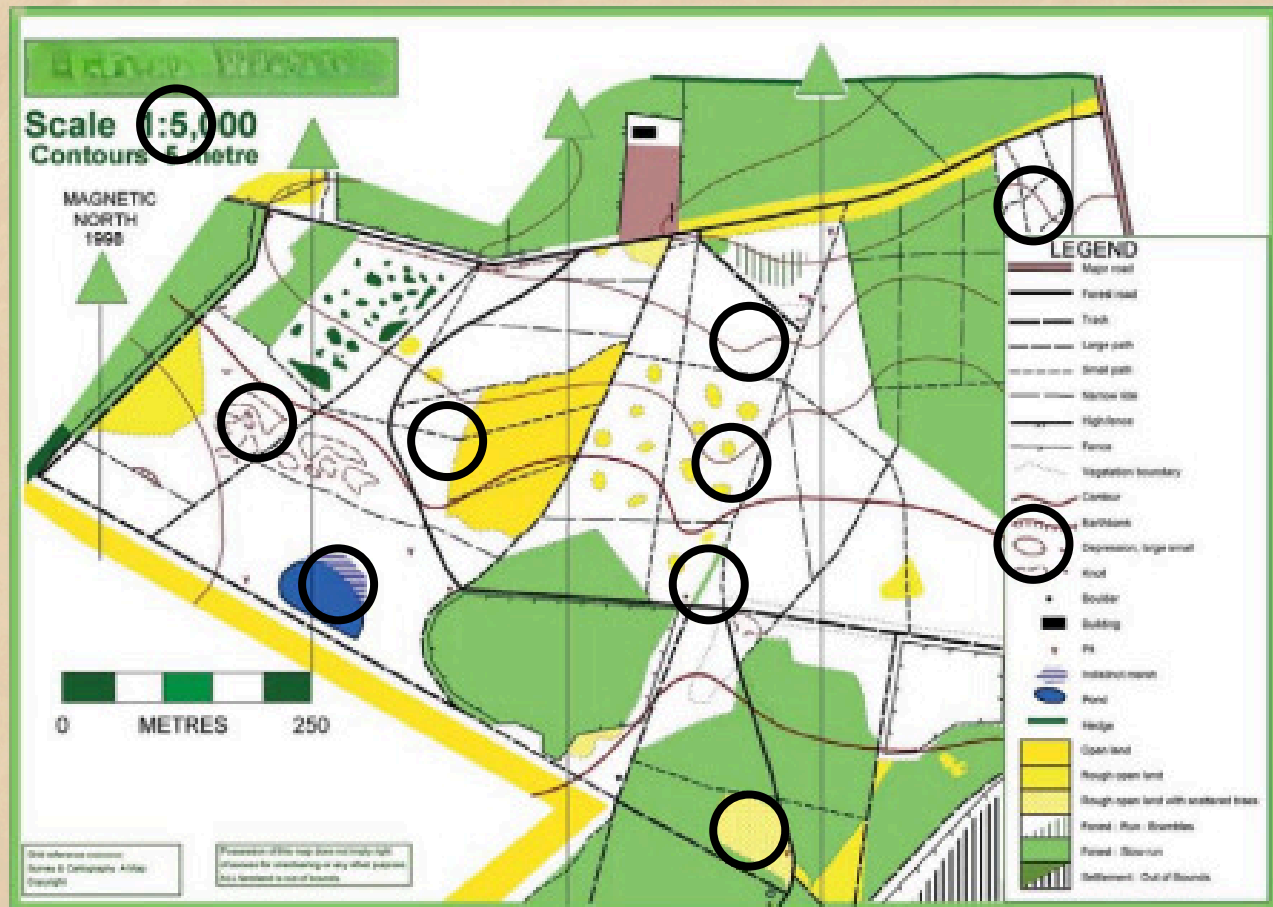
CHALLENGE 1: PATHFINDER'S CHOICE

To make it up the steep hillside safely, you'll need to match the terrain correctly. The contour lines on the left (labeled A to H) represent different parts of the hill, while the shapes on the right (numbered 1 to 8) represent how those parts look from a side view. Carefully study each contour line (A to H) and identify which side view (1 to 8) matches it.



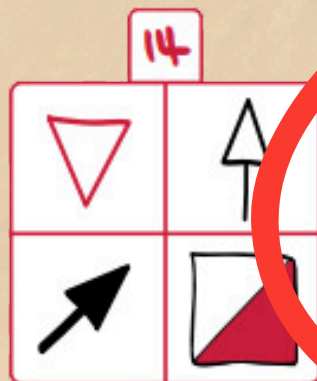
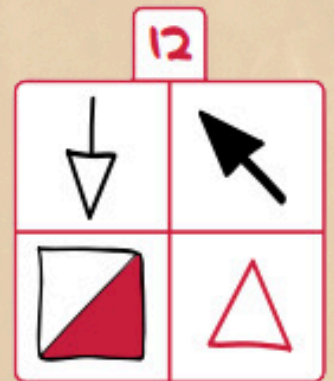
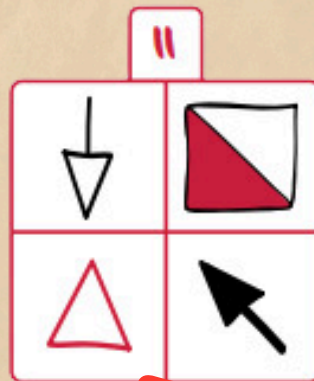
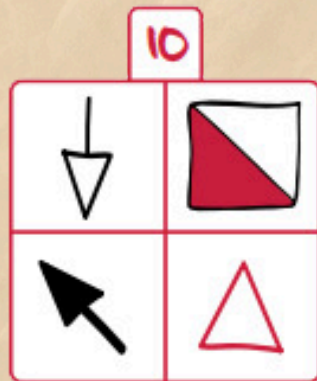
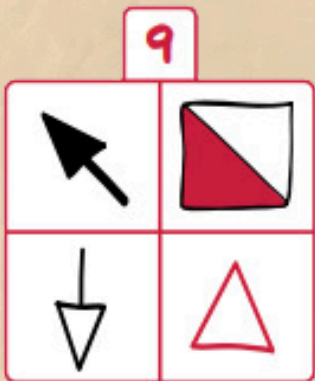
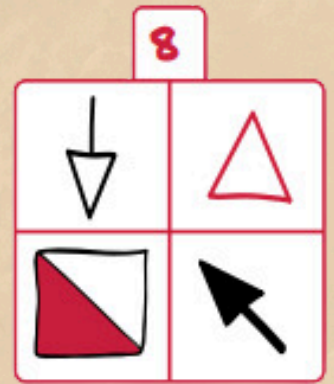
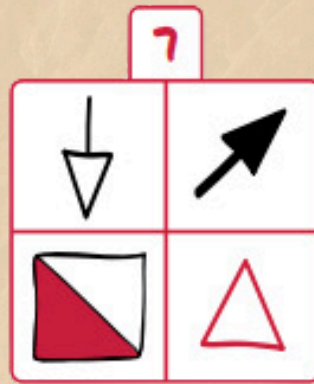
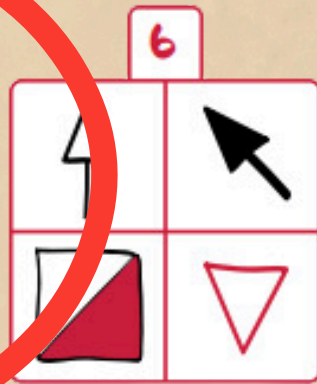
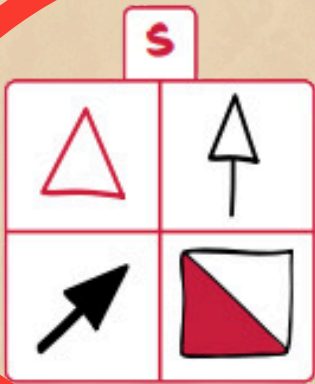
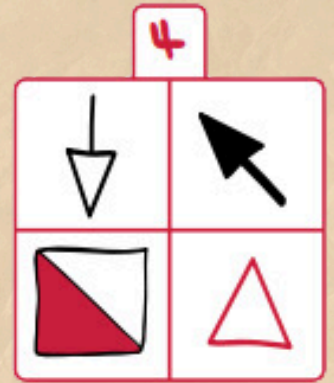
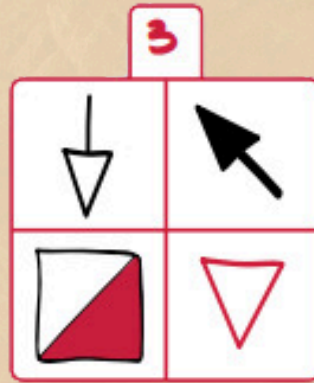
CHALLENGE 2: TRAILBLAZER'S INSIGHT

There are 10 differences hidden within the maps. Circle or mark each difference you find:



CHALLENGE 3: TWIN TRACKS

There are 16 items in total. Your task is to identify the two pairs that are completely identical.



FINAL CHALLENGE: THE BRIDGE TO TRUTH

Below are the scrambled words that form the key to your escape. Take your time and carefully unscramble each one to reveal the quote that will light your path to freedom.

"HTE REONRUJY WSA HET TINTODESANI LAL LGNOA."

Once you've pieced together the correct message, you'll have all the strength and determination you need to take the final steps across the bridge and leave the forest behind.

Complete the Journey

You pause, heart pounding, and take a deep breath. As the final words fall into place, the answer becomes clear:

"THE JOURNEY WAS THE DESTINATION ALL ALONG"

The bridge sways one last time, but this time, you step forward with confidence. You've made it. You've found your way out, and you've discovered something more profound than just the path to freedom. You've found yourself.

