



# HOPE + FLOWER

## PLAN SKYHOME F3

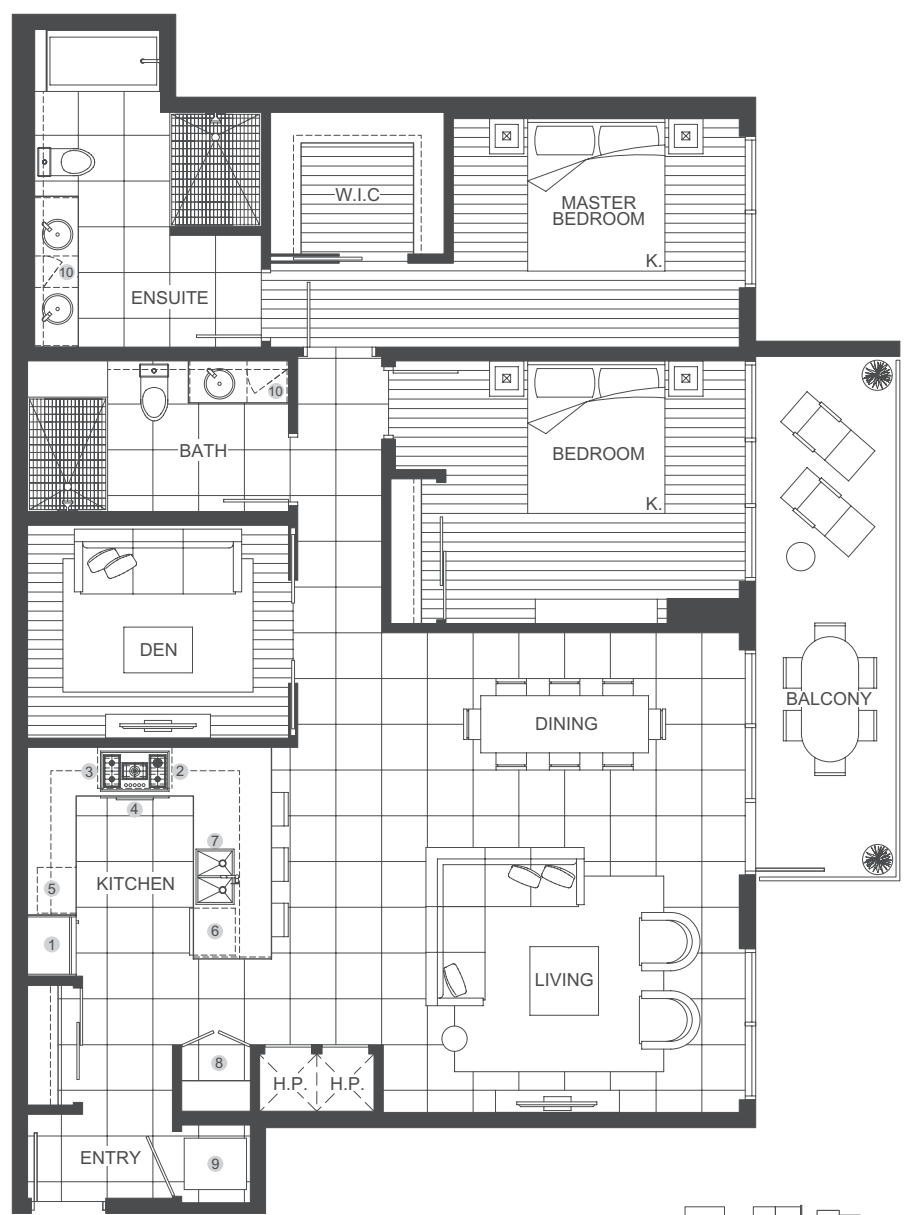
2 BEDROOM + DEN + 2 BATH | UNITS: 3800

HOPE

TOTAL AREA 1,599 SQ FT

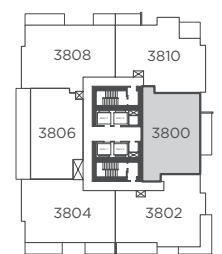
1,462 SQ FT  
INDOOR AREA

137 SQ FT  
OUTDOOR AREA



**FEATURES LIST:**

- |                             |  |
|-----------------------------|--|
| 1. 30" Integrated Fridge    | 6. Integrated Dishwasher                             |
| 2. 5 Burner Gas Cooktop     | 7. Push Button Sink Disposal                         |
| 3. Ducted Hood Fan          | 8. Pantry  |
| 4. Convection Built In Oven | 9. High-Efficiency Full Size Ducted Washer and Dryer |
| 5. Microwave                | 10. Hidden Medicine Cabinet                          |



38th Floor



The floorplans, square footage, dimensions, design and configuration of the strata lots and project are approximate and/or artist's interpretation only and may differ from what is shown. Final dimensions, square footage, and configuration shall be determined by the final strata plans. Final floorplans may be the mirror image of the floorplans shown above. Refer to architectural drawings. The developer reserves the right to make changes without notice to the floorplans, ceiling heights, project design, landscaping plans, appliances, specifications, and features. E.&O.E.