



# HOPE + FLOWER

## PLAN SKYHOME G8

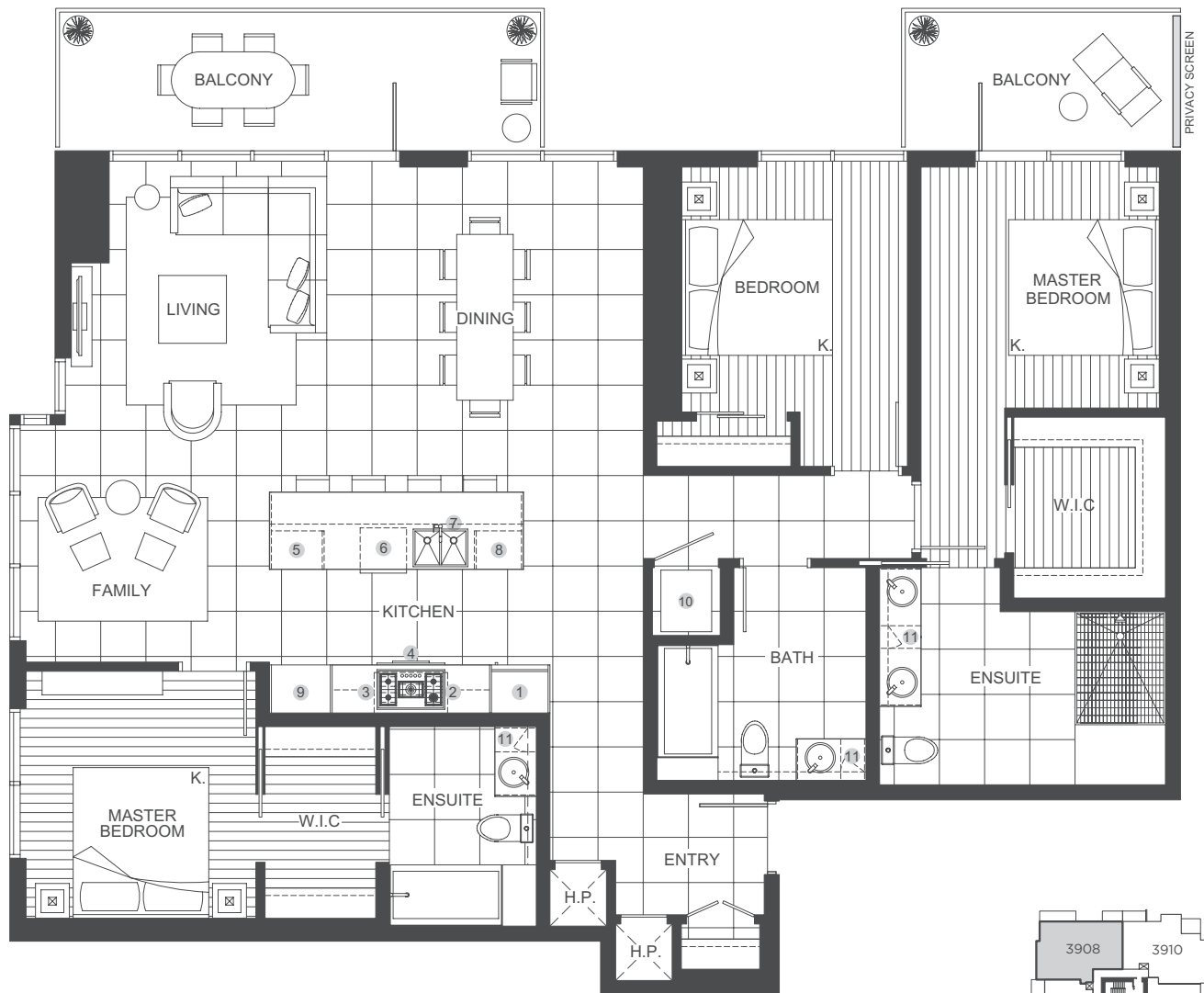
3 BEDROOM + FAMILY + 3 BATH | UNITS: 3908

HOPE

TOTAL AREA 1,818 SQ FT

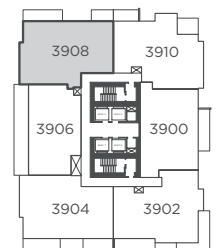
1,619 SQ FT  
INDOOR AREA

199 SQ FT  
OUTDOOR AREA



### FEATURES LIST:

- |                             |   |
|-----------------------------|---|
| 1. 30" Integrated Fridge    | 7. Push Button Sink Disposal                          |
| 2. 5 Burner Gas Cooktop     | 8. Undercounter Wine Fridge                           |
| 3. Ducted Hood Fan          | 9. Pantry   |
| 4. Convection Built In Oven | 10. High-Efficiency Full Size Ducted Washer and Dryer |
| 5. Microwave                | 11. Hidden Medicine Cabinet                           |
| 6. Integrated Dishwasher    |   |



39th Floor



The floorplans, square footage, dimensions, design and configuration of the strata lots and project are approximate and/or artist's interpretation only and may differ from what is shown. Final dimensions, square footage, and configuration shall be determined by the final strata plans. Final floorplans may be the mirror image of the floorplans shown above. Refer to architectural drawings. The developer reserves the right to make changes without notice to the floorplans, ceiling heights, project design, landscaping plans, appliances, specifications, and features. E.&O.E.