

Purslane

AT THE GREEN-HOUSE



At the entrance to The Green-Wood Cemetery — a National Historic Landmark dating to 1838 — the Green-House pairs an 1895 Victorian greenhouse with purpose-built contemporary construction, just across the street from the Cemetery's iconic gates. Sun-filled and versatile, the space welcomes occasions of all kinds: weddings, memorials, corporate events, and private celebrations.



- Restored 1895 Weir Greenhouse (1,700 sq. ft.) paired with a new 2,000 sq. ft. gallery space, catering kitchen, and full amenities.
- Designed by Architecture Research Office, an award-winning firm, with exhibition galleries by C&G Partners.
- Located near the Main Entrance at 25th Street and Fifth Avenue, within one of Brooklyn's most storied and visually distinctive landscapes.
- 1913 NewGothic Historic Chapel inside the Cemetery available as an add-on.



CAPACITY

Bookings include the use of both Atrium and Gallery

The Atrium

105 seated, 125 standing

The Gallery

130 seated, 170 standing

Historic Chapel available as wedding ceremony add-on

70 (including staff)*

FEES

Weddings 8 hours	2026	2027
Saturday	\$9,000+	\$16,000+
Friday & Sunday	\$8,000+	\$12,850+
Historic Chapel Ceremony Add-On*	\$4,000+	\$4,250+

Event Type	2026	2027
Commercial (Film/TV/Fashion)	\$25,000+	\$26,750+
Private Social Gathering	\$7,000+	\$7,500+
Post-Funery Gaterings** 4 hours (Atrium only)	\$300+	\$325+

* Not ADA accessible, 10 minute walk from Green-House

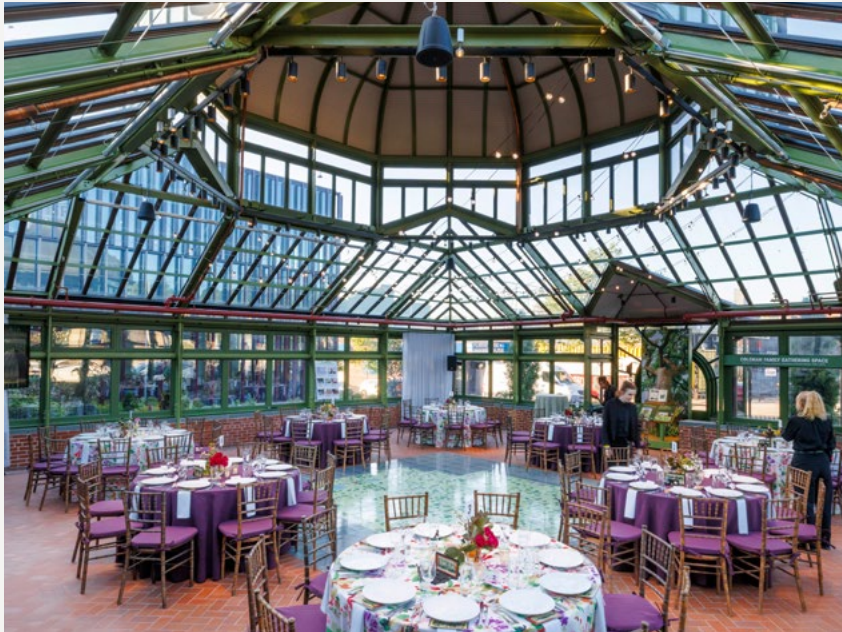
** Available to families who have had a Green-Wood service. Limited to 50 guests and 4 hours.

• **Corporate & Non-Profit Retreats:** available on Tuesdays and Wednesdays, please inquire for pricing









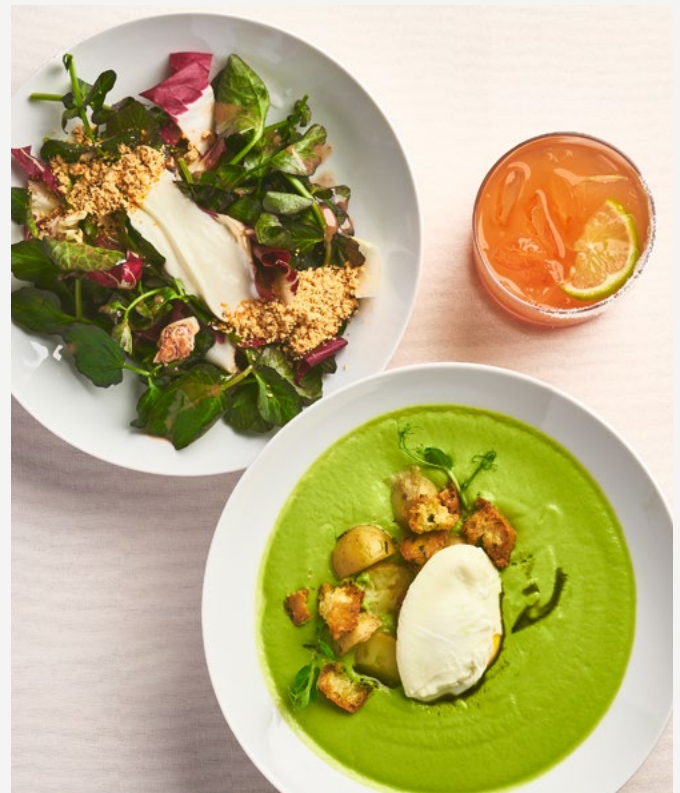
Purslane: Carbon Neutral, Conscious Catering

- Scope 3 Carbon-Neutral Business
- High-definition, locally and seasonally sourced ingredient-driven menus
- Zero-waste operations with a commitment to verified zero-waste events by 2027
- Slow-food ethos catering to a range of culinary tastes and preferences



Sustainability is at the heart of our mission. We are proud industry leaders as New York's first zero-waste and carbon-neutral caterer.

		TRADITIONAL FOOD SERVICE	PURSLANE
	Trash sent to landfills each year in the U.S.	52.4 MILLION TONS	0 POUNDS
	Global carbon emissions	47 MILLION TONS	0 POUNDS
	U.S. food's contribution to climate change	26% OF ALL EMISSIONS	0%
	Recyclables sent to landfills each year in the U.S.	86%	0%
	Food waste created in the U.S.	11.4 MILLION TONS	0 POUNDS
	U.S. food waste sent to composts	9%	100%



750 5th Ave, Brooklyn, NY 11232

718.701.8344

green-house@purslane.com

purslane.com