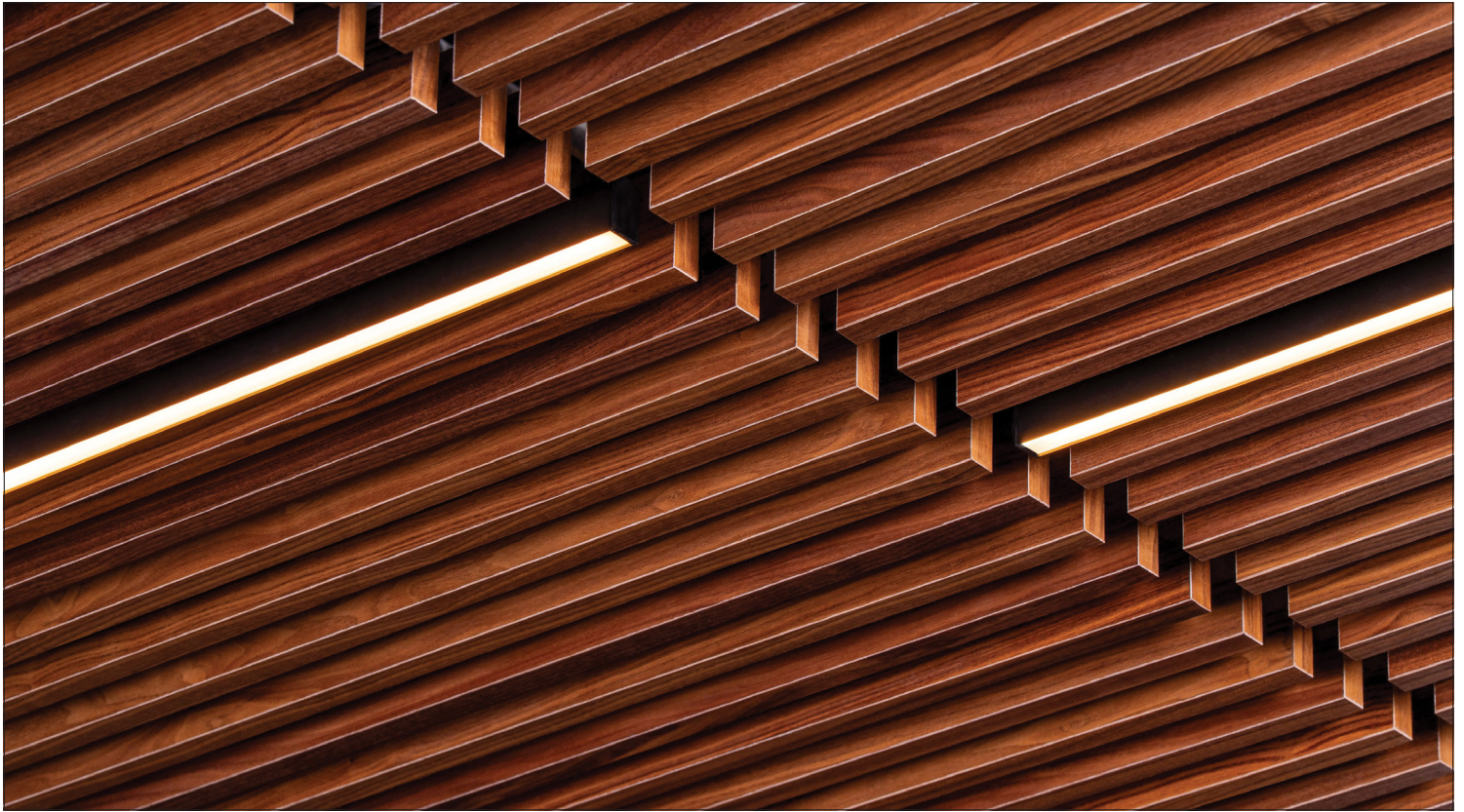


Armstrong® Integrated Lighting for WoodWorks® Grille



WoodWorks® Grille Forté Veneered with 0.75" integrated lighting

Specifications

Lighting

Solid state LED system 120v–277v input 2700k, 3000k, 3500k, 4000k options, 90 CRI light source options.

Our high-fidelity LED technology delivers stunning 90 CRI color accuracy with tight chromaticity control and the efficiency you expect from 80 CRI boards, giving lighting designers greater control over how materials, textures, and brand colors appear in real-world environments.

Dimming

Dimming 0–10v; driver enclosure is remote from the fixture

Mounting

Integrates into the WoodWorks® Grille Forté Veneered, WoodWorks® Grille Forté Solid, and WoodWorks® Grille Classics ceiling panels. Standard fixture mounting meets the desired qualification level for California. Additional hardware and safety lanyards are available for securing to the T grid, meeting DSA and OSHPD requirements.

Certification

CSA approved to UL Standards
Declare label certified
Living Building Challenge compliant
Damp rated
Seismic Zone Certified

Cleaning & Care

Designed to withstand the demands of rigorous cleaning requirements. Effective cleaning and disinfection of environmental surfaces reduces microbe transmission. Superior chemical resistance and durability promotes safety in any design application. Use common disinfectants and cleaners to reduce microbe transmission.

Warranty

5 year warranty when used as a complete system with WoodWorks® Grille Forté Veneered, WoodWorks® Grille Forté Solid, and WoodWorks® Grille Classics ceiling panels

Armstrong® Integrated Lighting

Fixture Options



Lighting Dimensions

Lengths & Widths *Custom lengths available*



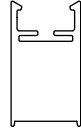
47" L



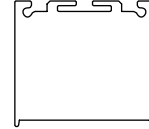
71" L



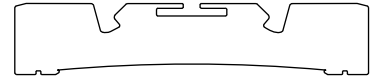
95" L



0.75" W

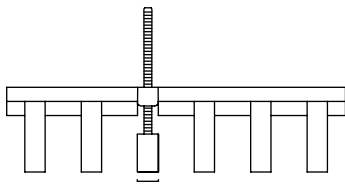


1.50" W

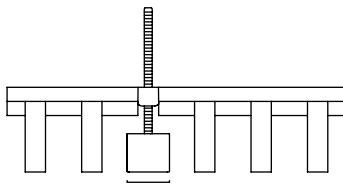


3.75" W

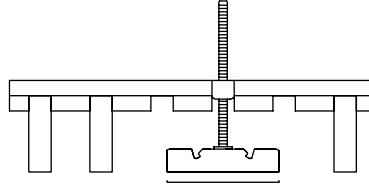
Light Placement – Slat Replacement



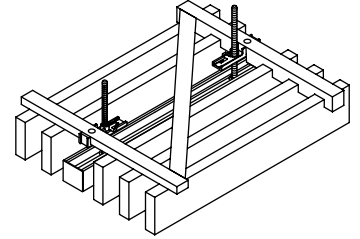
0.75" W



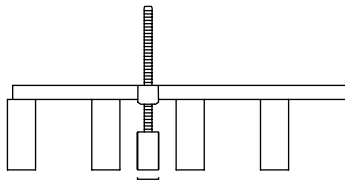
1.50" W



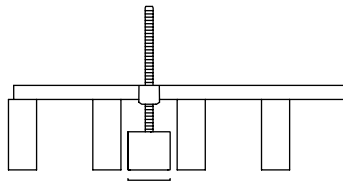
3.75" W



Light Placement – Between Slat

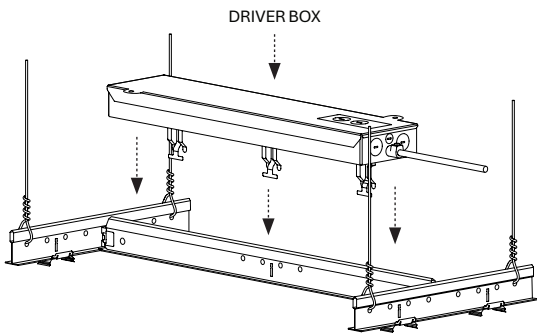


0.75" W

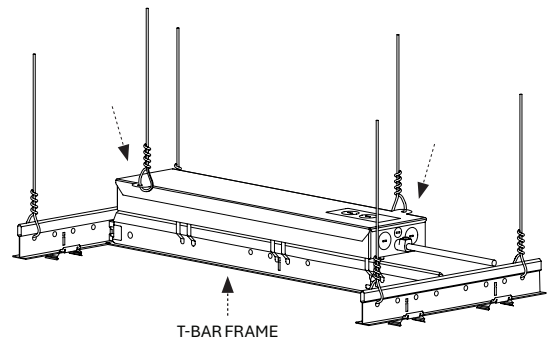
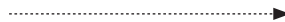


1.50" W

Driver Box Placement



DRIVER BOX



T-BAR FRAME

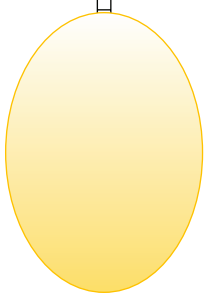
Armstrong® Integrated Lighting Lighting Details



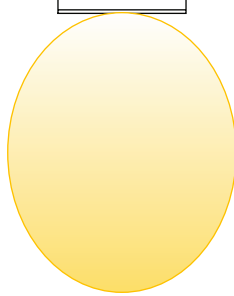
Light Distribution Options

Consult factory or lightart.com for IES files, tested in accordance with IESNA LM79

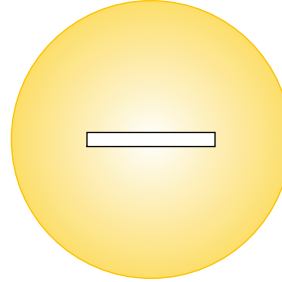
END VIEW



SIDE VIEW



TOP VIEW



Performance

Based on 3500K / 90CRI / Standard Distribution

NOMINAL LUMEN OUTPUT (LM/FT)	INPUT POWER (W/FT)			EFFICACY (LM/W)		
	0.75"	1.5"	3.75"	0.75"	1.5"	3.75"
400	4.85	3.65	4.21	82.42	109.68	95.10
500	6.15	4.62	5.35	81.34	108.28	93.41
600	7.47	5.62	6.50	80.31	106.81	92.31
700	8.79	6.62	7.65	79.60	105.78	91.54
800	-	7.62	8.82	-	105.02	90.67
900	-	8.65	10.00	-	104.08	90.00
1000	-	9.68	11.18	-	103.34	89.47
1100	-	10.74	12.38	-	102.47	88.84

(If fixture power is under 15W, please specify a 120V or 277V driver)

Light Distribution

Based on measurement data

COLOR TEMPERATURE / CRI	MULTIPLIER
2700K / 90	0.98
3000K / 90	1.00
3500K / 90	1.00
4000K / 90	1.03

OUTPUT MULTIPLIERS INSTRUCTIONS

Adjusted Value = $L_1 \bar{y} C_m \bar{y}$ where:

L_1 = (Lumen output at 3500K / 90 CRI) \bar{y}

C_m = (Color Temp. / CRI Multiplier) \bar{y}

Example:

850LM / 4000K / 90CRI

$(850) \bar{y} (1.03) \bar{y} = 875.5LM$

Armstrong® Integrated Lighting SKU Specification



SPECIFICATION CODE

EXAMPLE: 2 QTY AIL-WOOD-GRILLE-FVNR-RPLS-1.50-95L-935CK-700LM-EBM-STD-NO

QTY. AIL - WOOD - GRILLE -
 -
 -
 -
 -
 -
 -
 -
 -
 -

1
2
3
4
5
6
7
8
9

Complete form to order WoodWorks® Grille. For each number, make one selection and enter in the corresponding box above.
 *Indicates modified choices; additional lead times and/or costs may apply.

1 CEILING STYLE

- FVNR FORTÉ VENEERED CEILING PANELS
- FSLD FORTÉ SOLID CEILING PANELS
- CLAS CLASSICS CEILING PANELS

2 LIGHT PLACEMENT

- RPLS REPLACE SLAT
- BTW* BETWEEN SLATS
Only available with 0.75" and 1.50" lighting options

3 PROFILE

- 0.75 0.75"
- 1.50 1.50"
- 3.75 3.75"

4 LENGTH (Lighting lengths correspond to the length of WoodWorks® Grille)

- 35L* 35" LENGTH
Custom WoodWorks® Grille panels required, consult Armstrong's ProjectWorks® Design Services
- 47L 47" LENGTH
- 59L* 59" LENGTH
Custom WoodWorks® Grille panels required, consult Armstrong's ProjectWorks® Design Services
- 71L 71" LENGTH
- 83L* 83" LENGTH
Custom WoodWorks® Grille panels required, consult Armstrong's ProjectWorks® Design Services
- 95L 95" LENGTH
- CRL CUSTOM RUN LENGTH

5 LED CRI / CCT

- 927CK 90 CRI / 2700K
- 930CK 90 CRI / 3000K
- 935CK 90 CRI / 3500K
- 940CK 90 CRI / 4000K

6 OUTPUT

- 400LM 400 LM/FT
- 500LM 500 LM/FT
- 600LM 600 LM/FT
- 700LM 700 LM/FT
Max lumen output for 0.75"
- 800LM 800 LM/FT
- 900LM 900 LM/FT
- 1000LM 1000 LM/FT
- 1100LM 1100 LM/FT

7 DIMMING AND CONTROLS

- P01 0-10V 1% DIMMING
- LEC* HI-LUME 1% ECOSYSTEM LED DRIVER
SOFT ON, FADE TO BLACK (LDE1 SERIES)
- EBM 0-10V 1% DIMMING INTEGRATED EM
BATTERY OPTION
Max lumen output limited - consult LightArt;
only available for 47" L and 95" L configurations

8 REMOTE DRIVER BOX CORD LENGTH

- STD 8'
- EXT* 20'

9 SEISMIC ZONE MOUNTING

- YES YES
Checking "YES" will include additional hardware and safety lanyards
for securing to the T grid, meeting DSA and OSHPD requirements
- NO NO