

A modern office interior featuring a ceiling with large, white, hexagonal light fixtures and blue decorative elements. The space includes white reception counters, large windows, and orange armchairs. A central white box contains the text 'LA2 CONNECTED' and 'SHAPES', with the 'LightArt' logo at the bottom.

LA2 CONNECTED

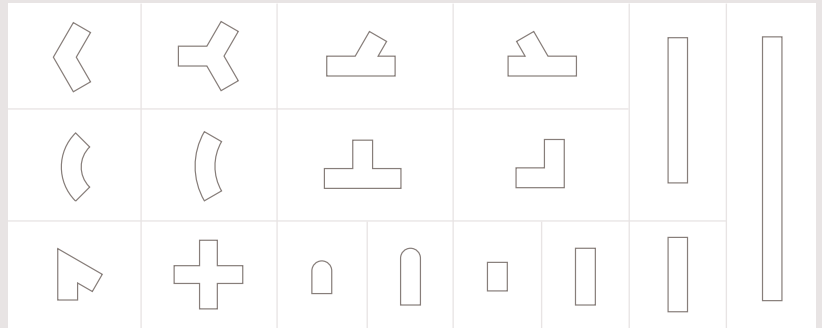
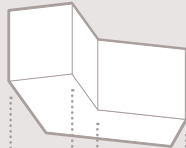
SHAPES

LightArt®

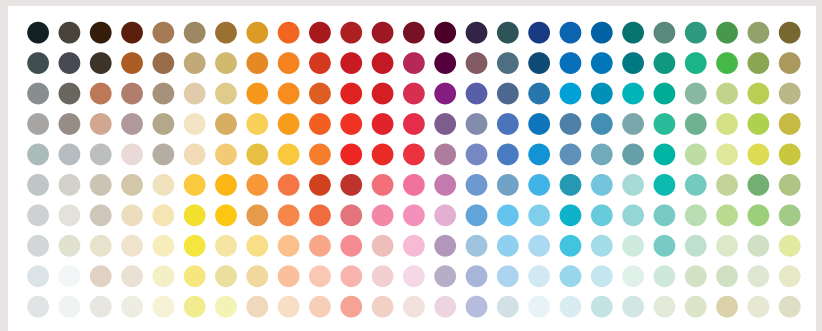
LA2 CONNECTED SHAPES

*A simple modular design process
yields unlimited possibilities.*

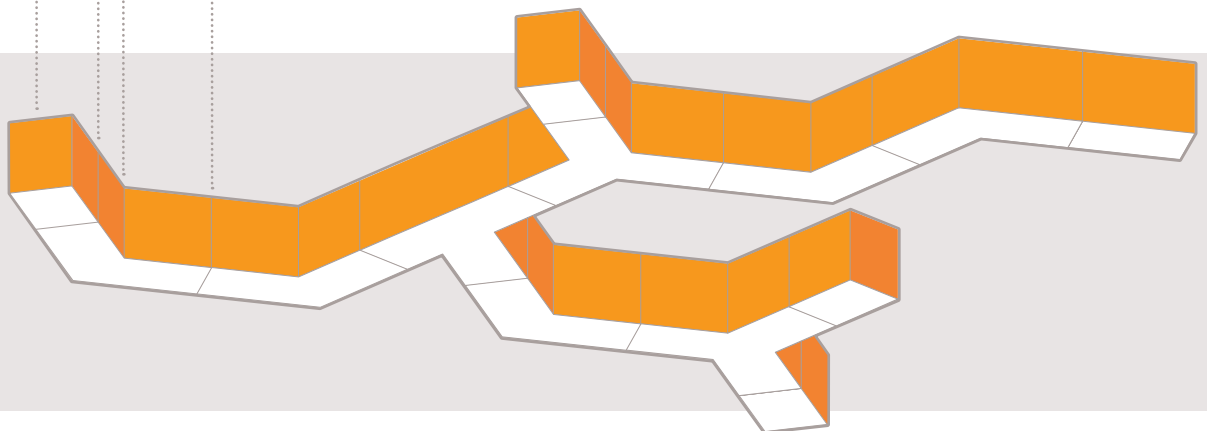
1
Choose your
SHAPES



2
Choose your
COLORS



3
Create your
FIXTURE

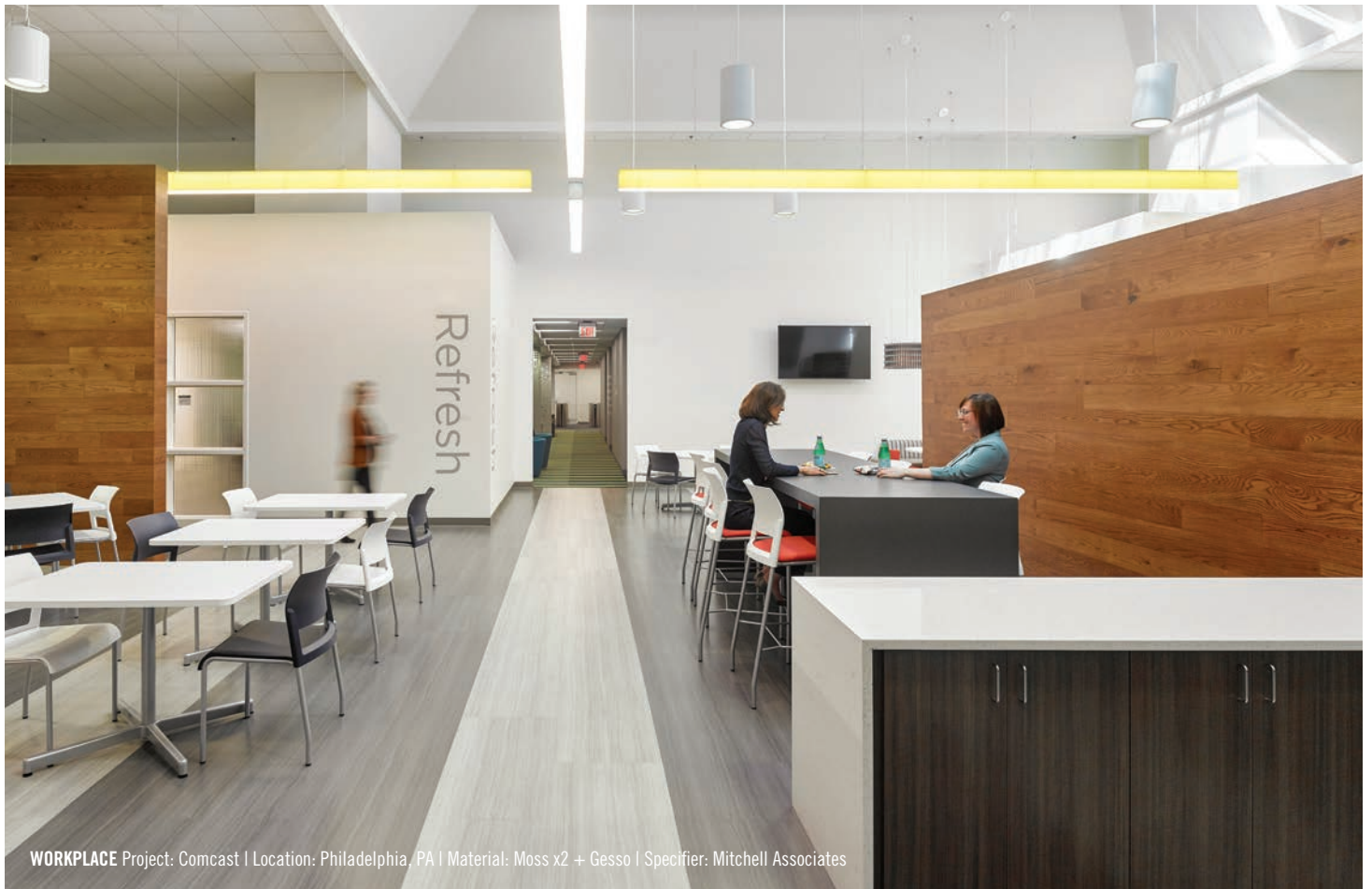


LA2 Connected is custom lighting without the custom cost.
Using a system of modular lighting shapes,
specify unique configurations tailored to meet
the needs of each project and budget.

The image shows a large-scale architectural detail, likely a ceiling or a wall installation. It features a complex arrangement of rectangular panels. A large, white, 'X' shaped structure is the central focus, formed by two intersecting planes. The surrounding panels are a warm, orange-brown color with a visible wood grain texture. The lighting is dramatic, with strong highlights and shadows that emphasize the geometric forms and the texture of the materials. In the background, some dark, industrial-looking elements like pipes or structural beams are visible.

CONNECT YOUR SPACE

Choose from a large array of modular parts
to create limitless combinations,
each adaptable to your design goals.



WORKPLACE Project: Comcast | Location: Philadelphia, PA | Material: Moss x2 + Gesso | Specifier: Mitchell Associates



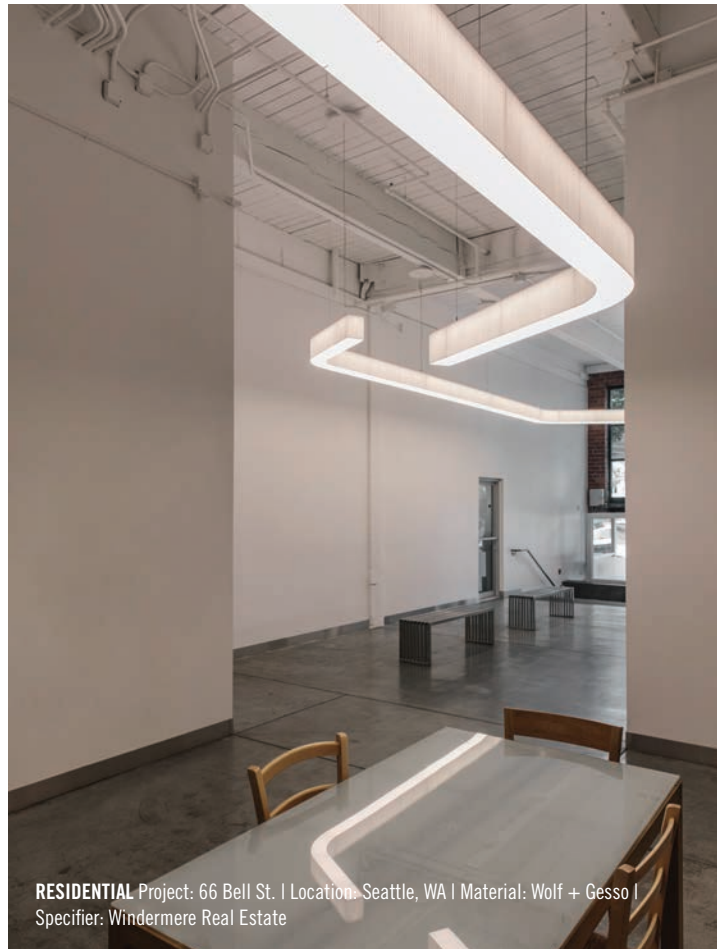
WORKPLACE Project: Northwest Mutual | Location: Milwaukee, WI | Material: Natural | Specifier: Quentin Thomas Associates



WORKPLACE Project Name: Core Logic | Location: Irving, TX | Material: Sable x2 + Gesso | Specifier: IA Interior Architects

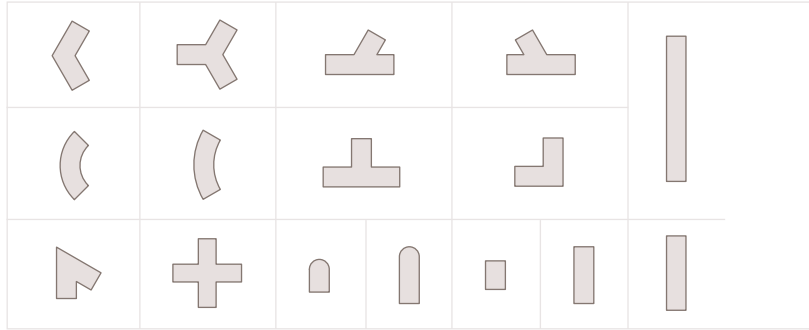
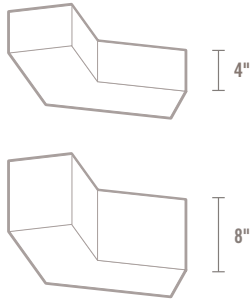


HOSPITALITY Project Name: Embassy Suites Hotel | Location: Amarillo, TX | Material: Warmstone + Gesso | Specifier: MatchLine Design Group





COMPONENT SHAPE OPTIONS



LIGHTING

Solid State LED System

120v-277 input; 24v driver; 0-10v dimming compatible

3000k 81 CRI light source

3500k, 4000k also available

9.6w / linear ft. circuits

Wattage varies based on configuration

Optional Driver: Hi-lume Premier

0.1% EcoSystem constant voltage

LED driver with Soft-on, Fade-to-Black dimming technology

HARDWARE

Removable powder coated lid

White canopy with white magnetic dress plate mounts to standard junction box (provided by others)

3/64" stainless steel cables to canopy and/or ceiling

White power cord to canopy

Adjustable 12" to 96" suspension

STANDARDS

4-6 week lead time

250+ color material shade options with fully enclosed diffuser

5 year limited warrant

ADDITIONAL SAMPLE CONFIGURATIONS

