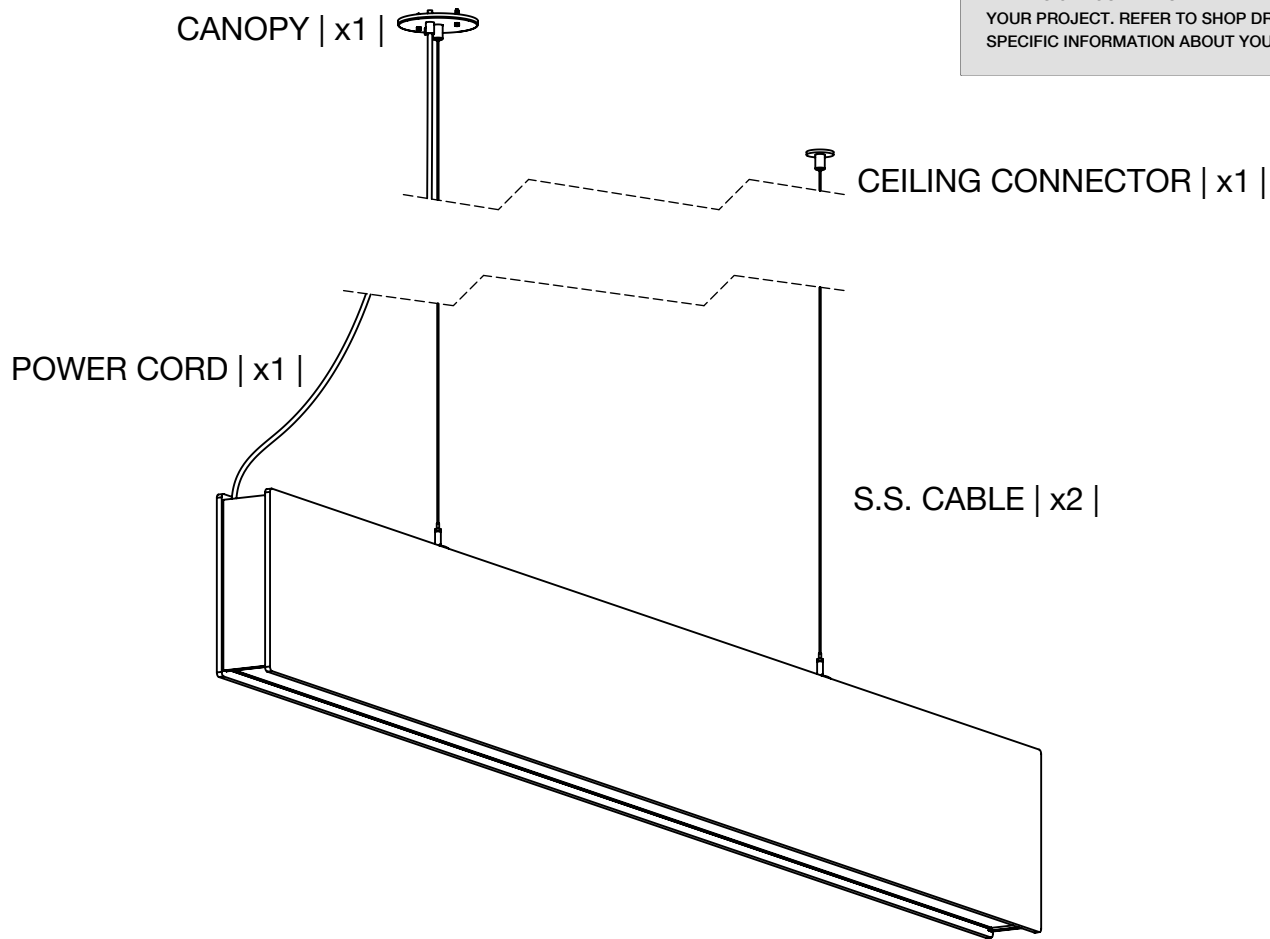


ILLUSTRATIONS ARE REPRESENTATIVE OF A TYPICAL STATIC INSTALLATION. SIZE, SHAPE, & DETAILS OF YOUR FIXTURE WILL VARY BASED ON YOUR PROJECT. REFER TO SHOP DRAWINGS FOR SPECIFIC INFORMATION ABOUT YOUR FIXTURE.



STATIC series

97.5"L x 4"W x 11.75"H

18 lbs

SHIPPING / RECEIVING

Fixtures boxed & shipped individually or for large quantities, on 4' x 4' or 4' x 8' pallets

Customer responsible for receiving & unloading of fixtures

Pallet jack / forklift strongly recommended (palletized orders only)

Fixtures must be stored indoors in a climate controlled location prior to installation

RESOURCES NEEDED

(2-3) People required for safe & efficient installation

(2) Ladders or scissors lifts

All necessary tools needed for proper wiring of fixture to supply circuits

HANDLING

Fixtures should remain boxed for protection until needed for installation

Fixtures are constructed of durable PET felt, but must be handled with care

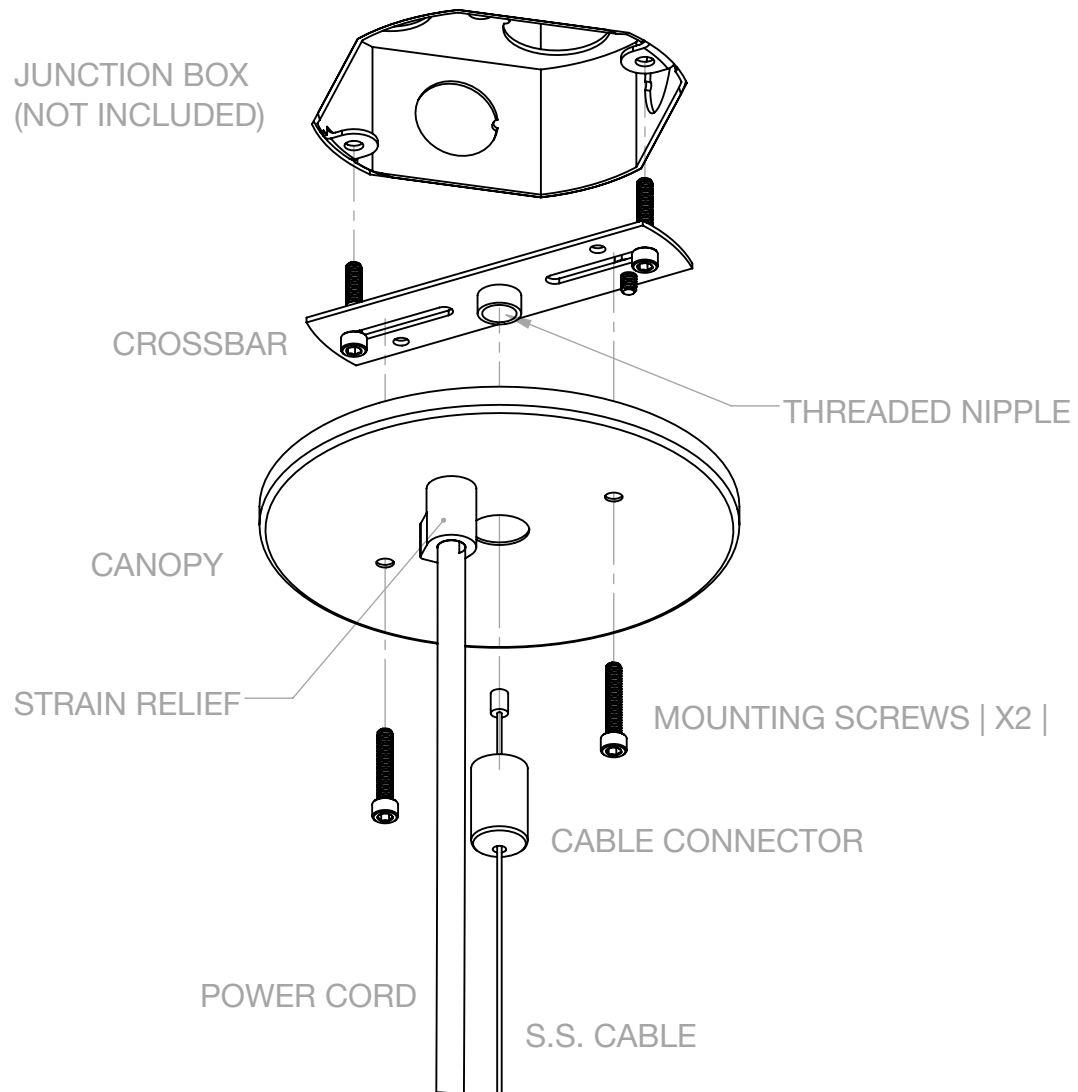
Large fixture components should be handled by a minimum of 2 people

Do not allow fixture components to rest on unpadded surfaces

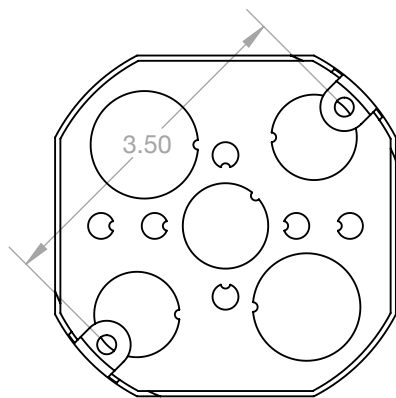
CLEANING

Use vacuum or soft brush to clean fins. Do not use strong solvents, highly alkaline or abrasive cleaning agents.

PARTS OVERVIEW

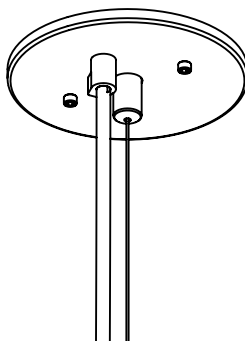


1



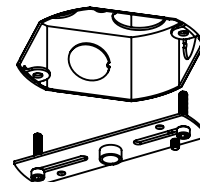
Install junction box. Refer to project-specific shop drawings provided by LightArt for exact locations.

2



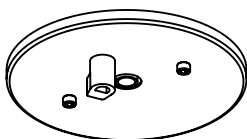
WIRING: See wiring instructions and diagrams on page 6 for additional details.

3



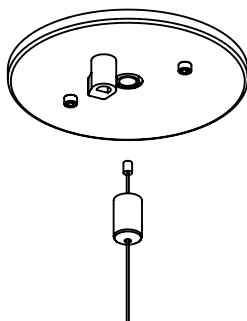
Push the connections and all excess wires into junction box. Secure crossbar to junction box with junction box hardware.

4



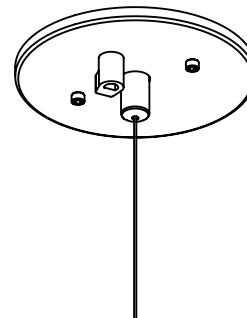
Secure canopy to crossbar using included fasteners. Threaded coupler on crossbar should extend through center hole in canopy 0.22"

5



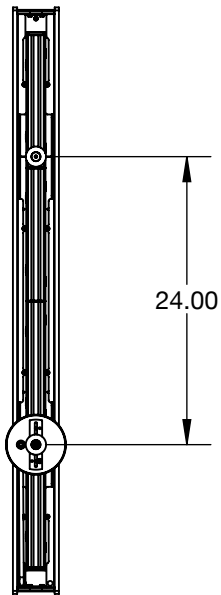
Pull the length of S.S. cable through the coupler until the swaged end catches inside.

6

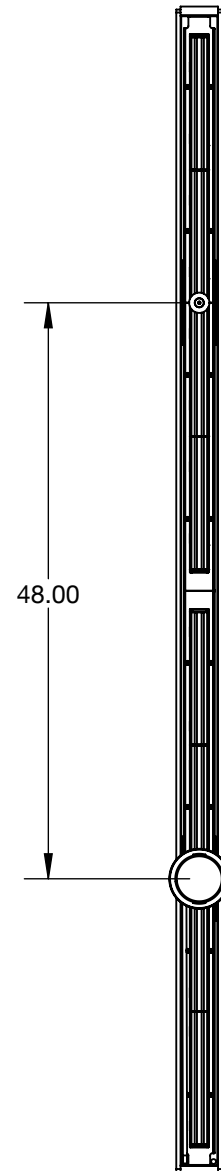


Thread coupler onto threaded coupler as shown. Continue threading coupler until firmly secured.

STATIC BEAM 48



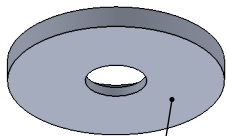
STATIC BEAM 96



PARTS OVERVIEW



THREAD
ADAPTER

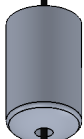


CABLE SWAGE



THREADED
CONNECTOR

S.S. CABLE

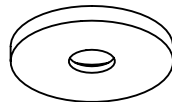


Install 1/4-20 all thread, refer to project specific shop drawings provided by LightArt for exact locations.

Note: All-thread to be installed to support 60lb. minimum load

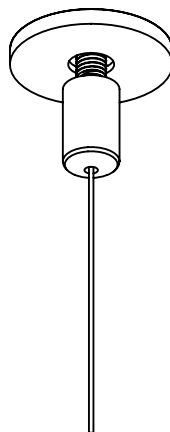
Note: All-thread should be installed to extend 1/2" below the line of the finish ceiling

1



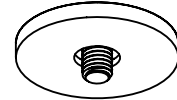
Thread the adapter onto the all thread until firmly secured against ceiling as shown

3



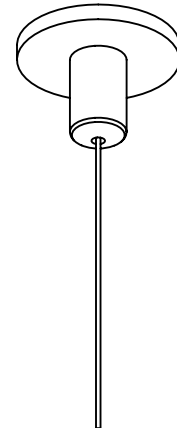
Thread ceiling coupler onto thread adapter as shown.

2

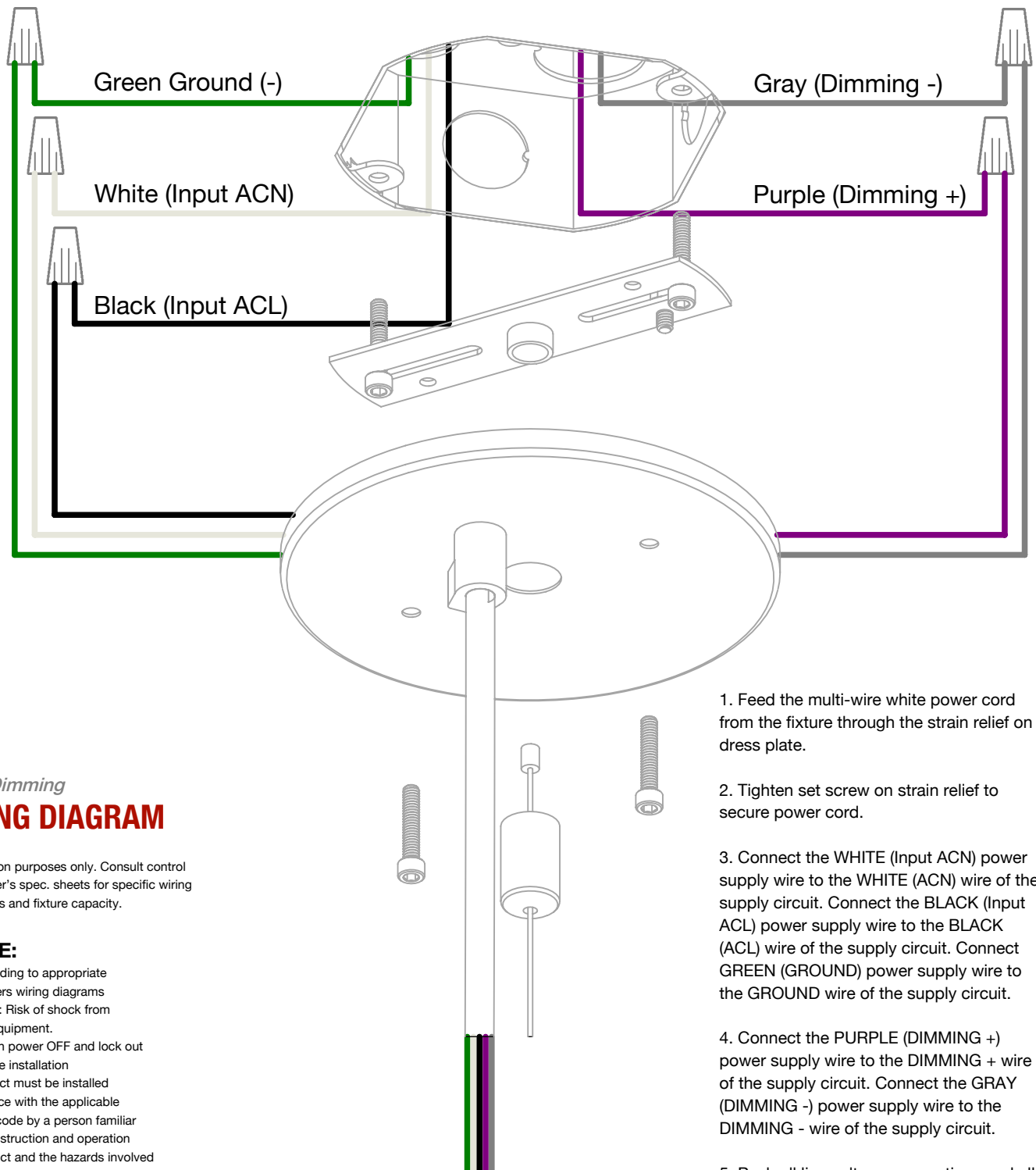


Slide escutcheon plate over thread adapter & against the finished ceiling.

4



Continue threading ceiling coupler onto thread adapter until firmly secured against escutcheon plate at ceiling.



0-10V Dimming

WIRING DIAGRAM

For illustration purposes only. Consult control manufacturer's spec. sheets for specific wiring requirements and fixture capacity.

NOTICE:

- Wire according to appropriate manufacturers wiring diagrams
- **WARNING:** Risk of shock from energized equipment.
- Always turn power OFF and lock out during fixture installation
- This product must be installed in accordance with the applicable installation code by a person familiar with the construction and operation of the product and the hazards involved

WARNING:

- **LIGHTART IS NOT LIABLE FOR DAMAGE DUE TO MISWIRING 0-10 VOLT CONTROL WIRES, OR LOW VOLTAGE LED WIRES TO LINE VOLTAGE.**

1. Feed the multi-wire white power cord from the fixture through the strain relief on dress plate.

2. Tighten set screw on strain relief to secure power cord.

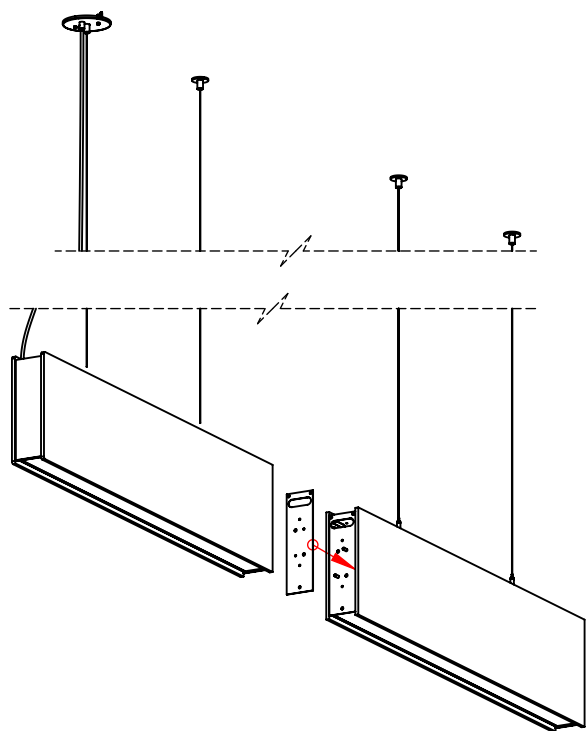
3. Connect the WHITE (Input ACN) power supply wire to the WHITE (ACN) wire of the supply circuit. Connect the BLACK (Input ACL) power supply wire to the BLACK (ACL) wire of the supply circuit. Connect GREEN (GROUND) power supply wire to the GROUND wire of the supply circuit.

4. Connect the PURPLE (DIMMING +) power supply wire to the DIMMING + wire of the supply circuit. Connect the GRAY (DIMMING -) power supply wire to the DIMMING - wire of the supply circuit.

5. Push all line voltage connections and all excess wires into the junction box.

6. Secure canopy to junction box with provided fasteners.

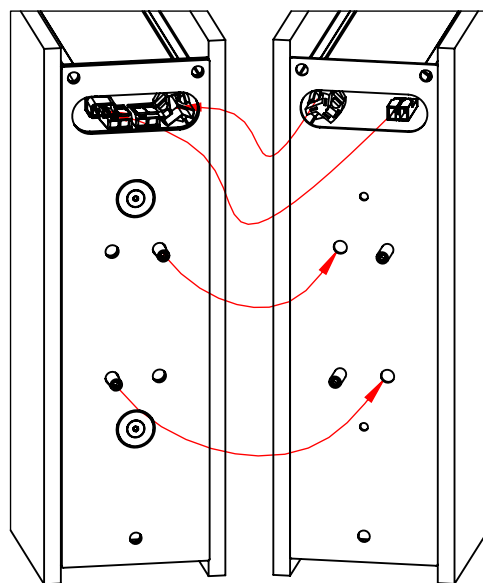
1



Attach spacer plate to one beam segment

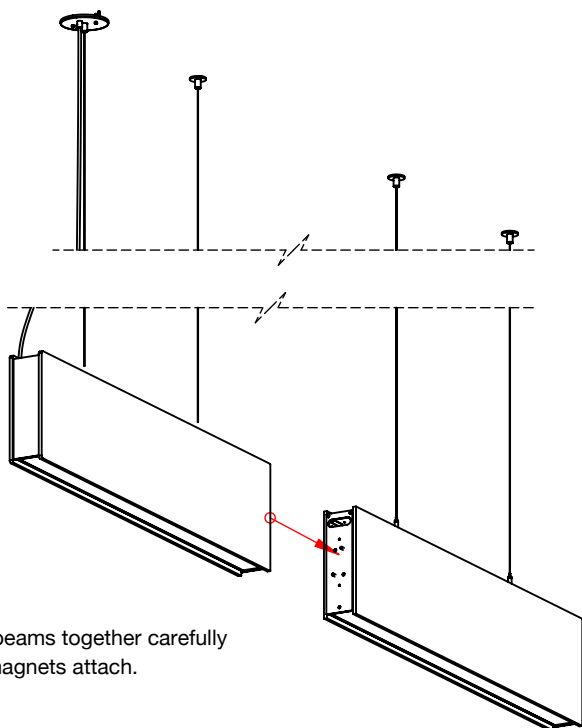
2

CAUTION: POWERFUL MAGNETS CAN PINCH SKIN. USE CARE WHEN ATTACHING.



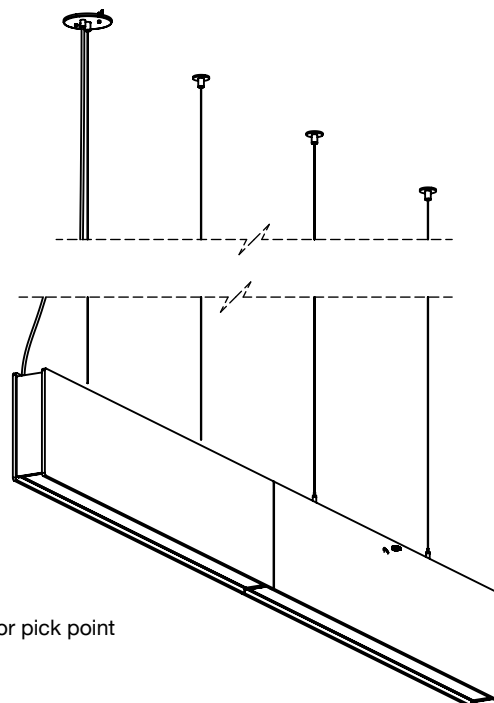
Attach dimming and power wires using connector plugs. Align nylon studs with holes in mating beam.

3



Slide beams together carefully until magnets attach.

4



See page 5 for pick point installation