

PRODUCT INFORMATION PACKET

Model No: 056T17F15664
Catalog No: G564A
1 1/2, 1800, TEFC, 56C, 3/60/230/460
Totally Enclosed Fan Cooled (TEFC)



Regal and Marathon are trademarks of Regal Beloit Corporation or one of its affiliated companies.
©2018 Regal Beloit Corporation, All Rights Reserved. MC017097E





Nameplate Specifications

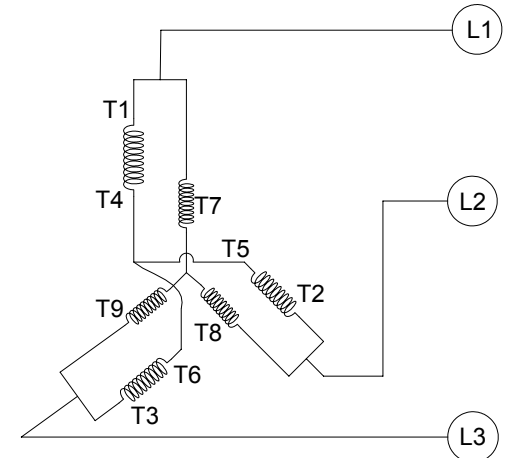
Output HP	1.50 Hp	Output KW	1.1 kW
Frequency	60 Hz	Voltage	208-230/460 V
Current	4.7-4.6/2.3 A	Speed	1725 rpm
Service Factor	1.25	Phase	3
Efficiency	86.5 %	Duty	Continuous
Insulation Class	B	Design Code	A
KVA Code	P	Frame	56C
Enclosure	Totally Enclosed Fan Cooled	Overload Protector	No
Ambient Temperature	40 °C	Drive End Bearing Size	6205
Opp Drive End Bearing Size	6203	UL	Recognized
CSA	Y	CE	Y
IP Code	43		

Technical Specifications

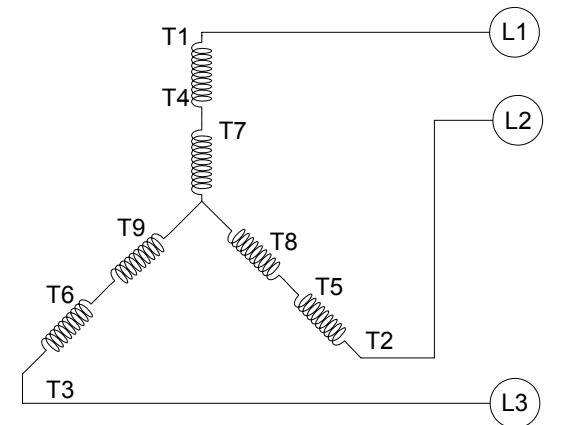
Electrical Type	Squirrel Cage Induction Run	Starting Method	Across The Line
Poles	4	Rotation	Reversible
Mounting	Rigid base	Motor Orientation	Horizontal
Drive End Bearing	Ball	Opp Drive End Bearing	Ball
Frame Material	Rolled Steel	Shaft Type	T
Overall Length	14.65 in	Frame Length	8.65 in
Shaft Diameter	0.625 in	Shaft Extension	1.88 in
Assembly/Box Mounting	F1 Only		
Outline Drawing	OL56100098-001	Connection Diagram	CDTD103

This is an uncontrolled document once printed or downloaded and is subject to change without notice. Date Created: 06/29/2018

CCW LOW VOLTAGE



CCW HIGH VOLTAGE



VIEW OF TERMINAL END

- NOTE:
1. TO REVERSE ROTATION, INTERCHANGE ANY TWO LINE CONNECTIONS TO L1, L2, OR L3.
 2. CONNECTION DIAGRAM-NAMEPLATE DD10038

DRAWING REVISION A	REVISION BY G. RODRIGUEZ	DATE 07-06-2016
ECO	APPROVED BY R. VALENZUELA	DATE 07-06-2016
ECO DESCRIPTION		
<small>COPYRIGHT REGAL BELOIT AMERICA, INC. ALL RIGHTS RESERVED. PROPRIETARY AND CONFIDENTIAL INFORMATION - THIS DOCUMENT IS THE PROPERTY OF REGAL BELOIT AMERICA, INC. (OWNER) AND CONTAINS OWNER'S PROPRIETARY INFORMATION. ANY PERSON, CORPORATION OR OTHER FIRM RECEIVING IT IS DEEMED, BY RECEIVING IT, TO AGREE THAT IT, AND/OR ANY PART OF IT, SHALL NOT BE DISCLOSED TO ANY PERSON, CORPORATION OR OTHER ENTITY, DUPLICATED, AND/OR USED, EXCEPT AS EXPRESSLY APPROVED IN WRITING IN ADVANCE BY OWNER. THIS DOCUMENT SHALL BE RETURNED TO OWNER UPON REQUEST. IT MAY BE SUBJECT TO CERTAIN RESTRICTIONS UNDER APPLICABLE EXPORT CONTROL LAWS AND REGULATIONS.</small>		

TOLERANCES UNLESS OTHERWISE SPECIFIED:	
DEC.	INCH mm ANGLE
.X	+0.1 [-2.5] ±0.5°
.XX	±0.01 [±0.25]
.XXX	±0.005 [±0.127]
.XXXX	±0.0005 [±0.0127]
REMOVE BURRS & BREAK SHARP	
EDGES: .003/.015 [.076/.381]	
CORNER FILLETS: .02 [.51]	
MACHINED SURFACES: 125/3.2	
mm SHOWN IN [BRACKETS]	

DRAWN BY G. RODRIGUEZ	DATE 07-06-2016
APPROVED BY R. VALENZUELA	DATE 07-06-2016
REFERENCE SKT52A105383CA	MATERIAL
THIRD ANGLE PROJECTION	PROCESS/FINISH

Regal Beloit America, Inc.	
DESCRIPTION CONN DIAGRAM-EXTERNAL	
SIZE B	DRAWING NUMBER CDTD103
SHEET 1 OF 1	

CERTIFICATION DATA SHEET

Model#: 56T17F15664 A WINDING#: ZT4256 FR 3
 CONN. DIAGRAM: CDTD103 ASSEMBLY: F1 ONLY
 OUTLINE: OL56100098-001

TYPICAL MOTOR PERFORMANCE DATA

HP	KW	SYNC. RPM	F.L. RPM	FRAME	ENCLOSURE	KVA CODE	DESIGN
1 1/2&1	1.12&.75	1800	1725&1425	56C	TEFC	P	A

PH	Hz	VOLTS	FL AMPS	START TYPE	DUTY	INSL	S.F	AMB°C	ELEVATION
3	60/50	208-230/460#190/380	4.7-4.6/2.3&4.2/2.1	ACROSS THE LINE	CONTINUOUS	B3	1.25/1.15	40	3300

FULL LOAD EFF: 86.5&85	3/4 LOAD EFF: 85.5	1/2 LOAD EFF: 82.5	GTD. EFF	ELEC. TYPE	NO LOAD AMPS
FULL LOAD PF: 71&64	3/4 LOAD PF: 62.5	1/2 LOAD PF: 49	84	SQ CAGE IND RUN	3 / 1.5

F.L. TORQUE	LOCKED ROTOR AMPS	L.R. TORQUE	B.D. TORQUE	F.L. RISE°C
4.5 LB-FT	48 / 24	21.2 LB-FT 471	26 LB-FT 578	35

SOUND PRESSURE @ 3 FT.	SOUND POWER	ROTOR WK^2	MAX. WK^2	SAFE STALL TIME	STARTS /HOUR	APPROX. MOTOR WGT
62 dBA	72 dBA	0.14 LB-FT^2	10 LB-FT^2	20 SEC.	2	50 LBS.

*** SUPPLEMENTAL INFORMATION ***

DE BRACKET TYPE	ODE BRACKET TYPE	MOUNT TYPE	ORIENTATION	SEVERE DUTY	HAZARDOUS LOCATION	DRIP COVER	SCREENS	PAINT
C-FACE	BRAKE	RIGID	HORIZONTAL	FALSE	NONE	FALSE	NONE	GRAY (POWDER)

BEARINGS		GREASE	SHAFT TYPE	SPECIAL DE	SPECIAL ODE	SHAFT MATERIAL	FRAME MATERIAL
DE	OPE						
BALL	BALL	POLYREX EM	T	NONE	NONE	AISI 1215 (MS1000)	ROLLED STEEL
6205	6203						

THERMO-PROTECTORS				THERMISTORS	CONTROL	SPACE /n HEATERS
THERMOSTATS	PROTECTORS	WDG RTDs	BRG RTDs			
NONE	NOT	NONE	NONE	NONE	FALSE	NONE VOLTS

If Inverter equals NONE, contact factory for further information

INVERTER TORQUE: NONE
INV. HP SPEED RANGE: NONE
ENCODER: NONE
NONE NONE
NONE NONE PPR
BRAKE: PROVISIONS FOR KIT NONE
NONE P/N NONE
NONE NONE
NONE FT-LB NONE V NONE Hz

*
N
O
T
E
S
*

DATE: 06/28/2017 07:18:32 AM
 FORM 3531 REV.3 02/07/99

** Subject to change without notice.