

PRODUCT INFORMATION PACKET



Model No: M6K34DB37A

Catalog No: E110097.00

1HP..3450RPM.56.DP.115/230V.1PH.60HZ.CONT.MANUAL.40C.1.25SF.RIGID.GENERAL PURPOSE.

Open Drip Proof (ODP)



Regal and Leeson are trademarks of Regal Beloit Corporation or one of its affiliated companies.

©2018 Regal Beloit Corporation, All Rights Reserved. MC017097E



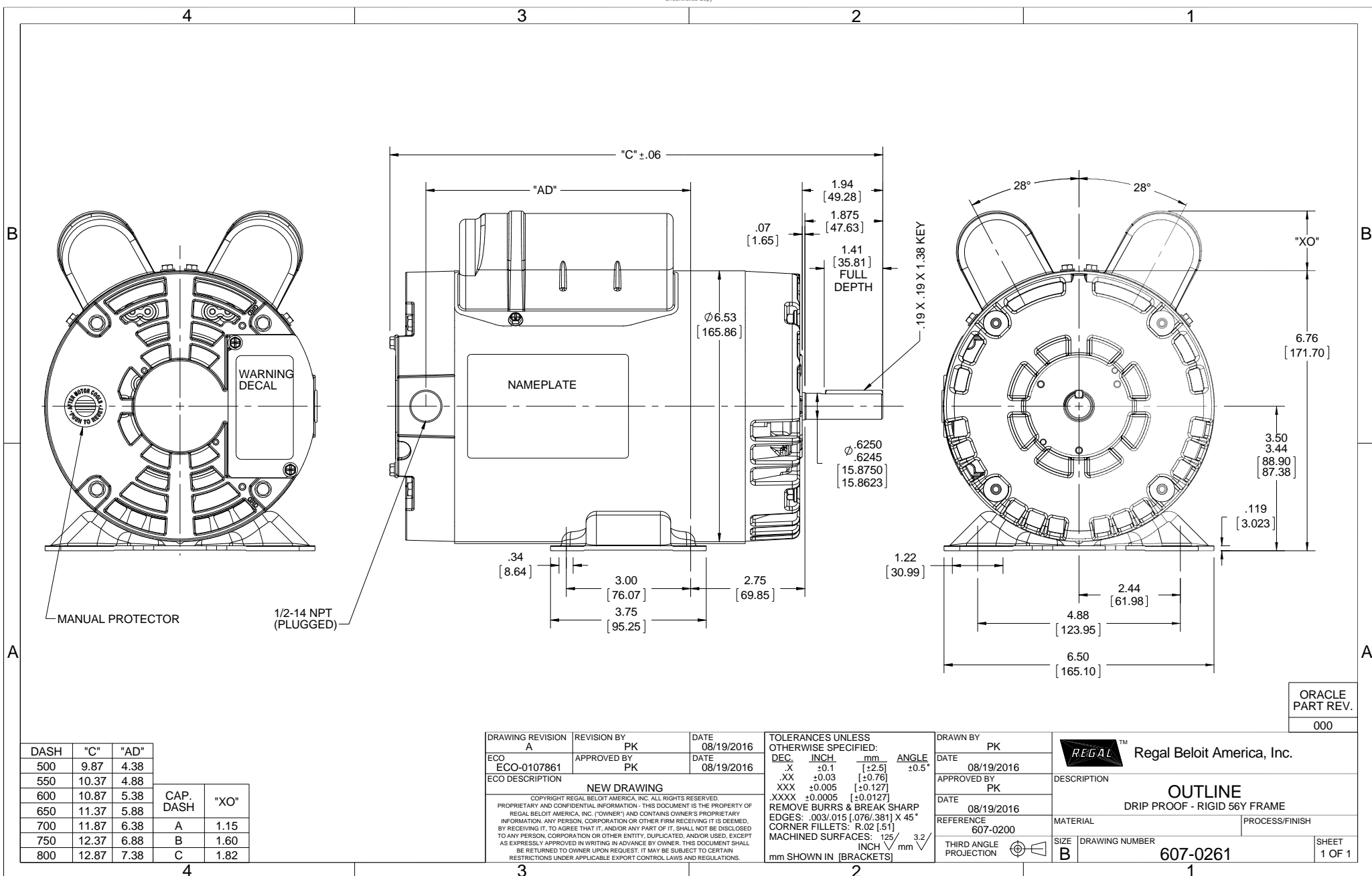


Nameplate Specifications

| | | | |
|----------------------------|-------------------|------------------------|-------------------|
| Output HP | 1 Hp | Output KW | 0.75 kW |
| Frequency | 60 Hz | Voltage | 115/230 V |
| Current | 7.8/3.9 A | Speed | 3450 rpm |
| Service Factor | 1.25 | Phase | 1 |
| Efficiency | 80.4 % | Duty | Continuous |
| Insulation Class | B | Design Code | L |
| KVA Code | J | Frame | 56 |
| Enclosure | Drip Proof | Overload Protector | Manual |
| Ambient Temperature | 40 °C | Drive End Bearing Size | 6203 |
| Opp Drive End Bearing Size | 6203 | UL | Recognized |
| CSA | Y | CE | N |
| IP Code | 22 | | |

Technical Specifications

| | | | |
|-----------------------|--------------------------------------|-----------------------|-----------------------------------|
| Electrical Type | Capacitor Start Induction Run | Starting Method | Across The Line |
| Poles | 2 | Rotation | Selective Counterclockwise |
| Mounting | Rigid base | Motor Orientation | HORIZONTAL |
| Drive End Bearing | BALL | Opp Drive End Bearing | BALL |
| Frame Material | Rolled Steel | Shaft Type | NEMA 56 |
| Overall Length | 11.37 in | Frame Length | 6.50 in |
| Shaft Diameter | 0.625 in | Shaft Extension | 1.88 in |
| Assembly/Box Mounting | F1 ONLY | | |
| Outline Drawing | 607-0261-650B | Connection Diagram | 005053.01 |



| DASH | "C" | "AD" | | |
|------|-------|------|-----------|------|
| 500 | 9.87 | 4.38 | | |
| 550 | 10.37 | 4.88 | | |
| 600 | 10.87 | 5.38 | CAP. DASH | "XO" |
| 650 | 11.37 | 5.88 | A | 1.15 |
| 700 | 11.87 | 6.38 | B | 1.60 |
| 750 | 12.37 | 6.88 | C | 1.82 |
| 800 | 12.87 | 7.38 | | |

| | | |
|---|-------------------|--------------------|
| DRAWING REVISION A | REVISION BY PK | DATE 08/19/2016 |
| ECO ECO-0107861 | APPROVED BY PK | DATE 08/19/2016 |
| ECO DESCRIPTION NEW DRAWING | | |
| <small>COPYRIGHT REGAL BELOIT AMERICA, INC. ALL RIGHTS RESERVED. PROPRIETARY AND CONFIDENTIAL INFORMATION - THIS DOCUMENT IS THE PROPERTY OF REGAL BELOIT AMERICA, INC. ("OWNER") AND CONTAINS OWNER'S PROPRIETARY INFORMATION. ANY PERSON, CORPORATION OR OTHER FIRM RECEIVING IT IS DEEMED, BY RECEIVING IT, TO AGREE THAT IT, AND/OR ANY PART OF IT, SHALL NOT BE DISCLOSED TO ANY PERSON, CORPORATION OR OTHER ENTITY, DUPLICATED, AND/OR USED, EXCEPT AS EXPRESSLY APPROVED IN WRITING IN ADVANCE BY OWNER. THIS DOCUMENT SHALL BE RETURNED TO OWNER UPON REQUEST. IT MAY BE SUBJECT TO CERTAIN RESTRICTIONS UNDER APPLICABLE EXPORT CONTROL LAWS AND REGULATIONS.</small> | | |

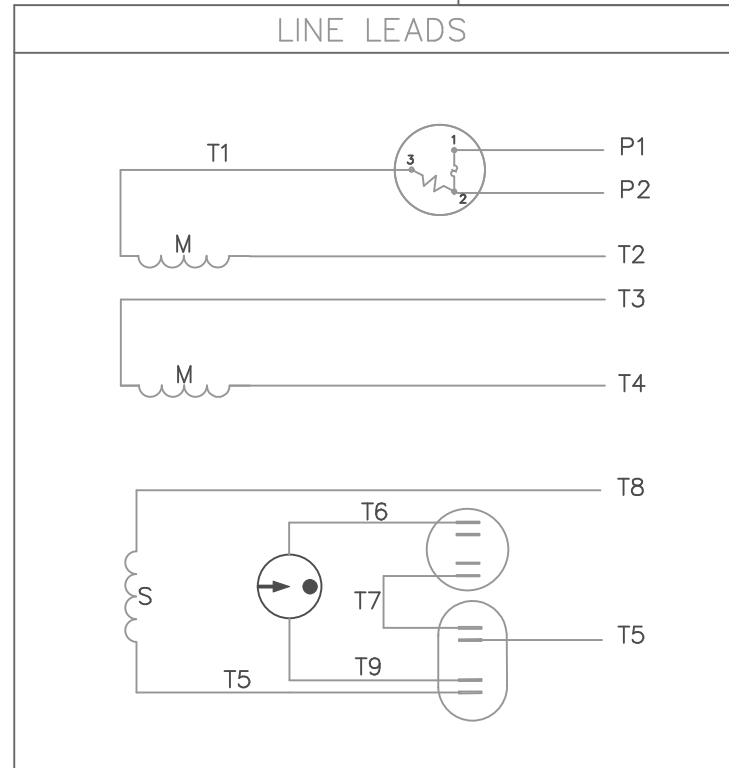
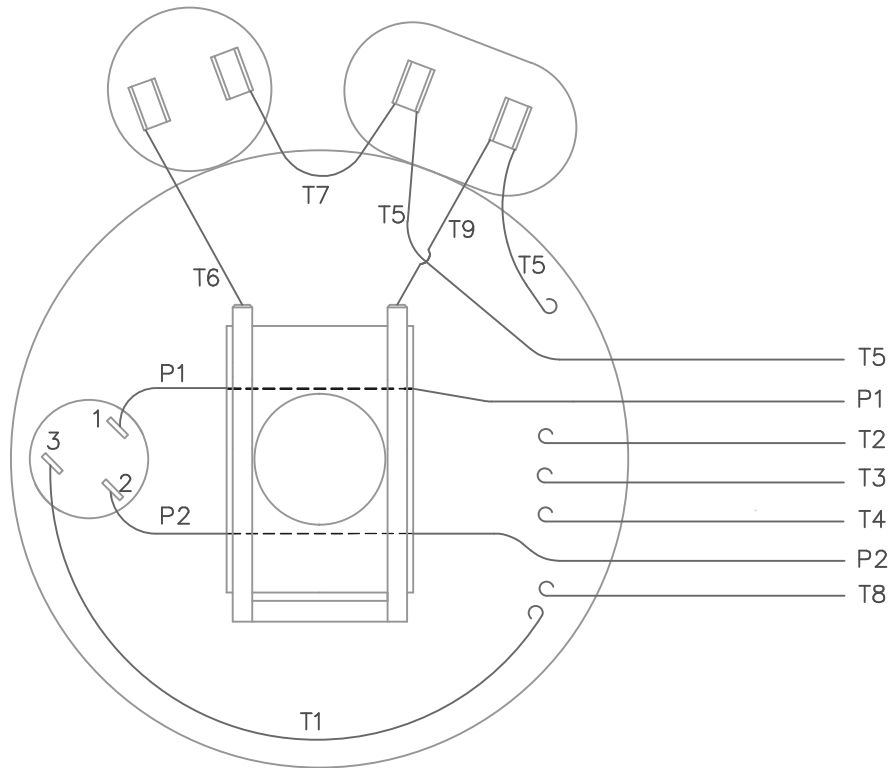
| | | | |
|--|---------|-----------|-------|
| TOLERANCES UNLESS OTHERWISE SPECIFIED: | | | |
| DEC. | INCH | mm | ANGLE |
| -X | ±0.1 | [±2.5] | ±0.5° |
| -XX | ±0.03 | [±0.76] | |
| -XXX | ±0.005 | [±0.127] | |
| -XXXX | ±0.0005 | [±0.0127] | |
| REMOVE BURRS & BREAK SHARP | | | |
| EDGES: .003/.015 [0.076/.381] X 45° | | | |
| CORNER FILLETS: R.02 [51] | | | |
| MACHINED SURFACES: 125/3.2 | | | |
| mm SHOWN IN [BRACKETS] | | | |

| |
|------------------------|
| DRAWN BY PK |
| DATE 08/19/2016 |
| APPROVED BY PK |
| DATE 08/19/2016 |
| REFERENCE 607-0200 |
| THIRD ANGLE PROJECTION |

| | |
|---|----------------------------|
| Regal Beloit America, Inc. | |
| DESCRIPTION OUTLINE DRIP PROOF - RIGID 56Y FRAME | |
| MATERIAL | PROCESS/FINISH |
| SIZE B | DRAWING NUMBER 607-0261 |
| SHEET 1 OF 1 | |

| |
|-------------------------|
| ORACLE PART REV. 000 |
|-------------------------|

VIEW FROM OUTSIDE OF MOTOR AT SWITCH END.



| | ROTATION FACING LEAD END | L1 | L2 | JOIN | INSULATE SEPARATELY |
|-----------|--------------------------|----|-------------|-------------|---------------------|
| HIGH VOLT | C.C.W. | P1 | T4 T5 | T2,T3 T8 | P2 |
| | C.W. | P1 | T4 T8 | T2,T3 T5 | P2 |
| LOW VOLT | C.C.W. | P1 | T2,T4 T5 | P2,T3 T8 | --- |
| | C.W. | P1 | T2,T4 T8 | P2,T3 T5 | --- |

| | | | | TOLERANCES UNLESS OTHERWISE SPECIFIED | |
|-----|----------------|-----|----------|---------------------------------------|---------|
| | | | | DECIMALS | |
| | | | | .00 | ± .01 |
| | | | | .000 | ± .005 |
| 18 | REDRAWN ON CAD | DBT | 05/27/97 | .0000 | ± .0005 |
| NO. | REVISION | BY | DATE | FRACTIONS | ± 1/64 |
| | | | | ANGLES | ± 1/2° |
| | | | | INCH/MM | |

LEESON ELECTRIC CORPORATION

DRAWN JRW 09/26/74 TITLE EXTERNAL WIRING DIAGRAM
CH'K'D. TYPE "K" W/PROTECTOR

APPR. TEM MAT'L. DECAL 004011 **BRF**

SCALE 1=1 REF. 005004 FINISH SIZE A DRAWING NO. 005053-01

FMF W-K 6341

THIS DRAWING IN DESIGN AND DETAIL IS OUR PROPERTY AND MUST NOT BE USED EXCEPT IN CONNECTION WITH OUR WORK ALL RIGHTS OF DESIGN AND INVENTION ARE RESERVED



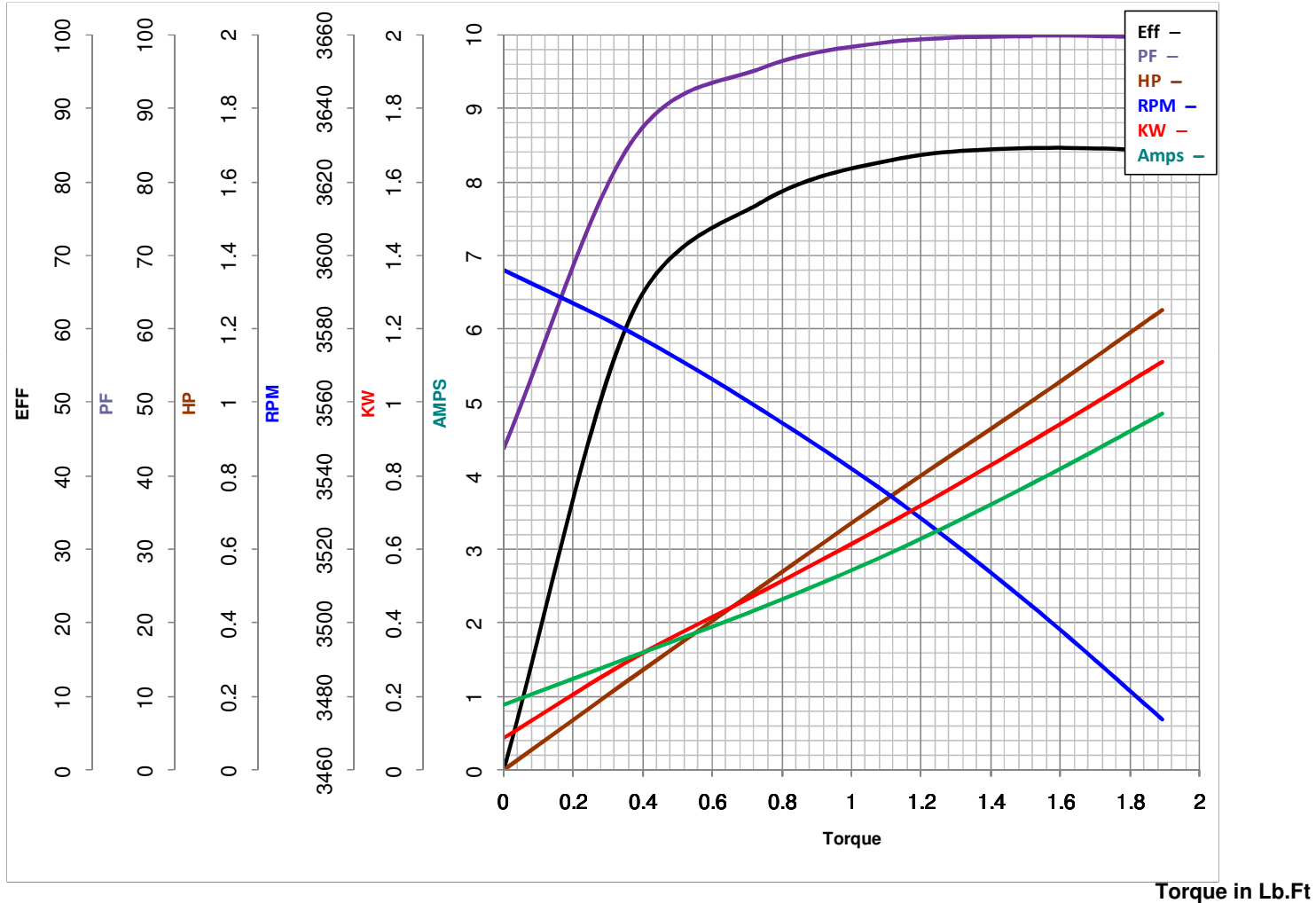
LEESON ELECTRIC CORPORATION
 TYPICAL PERFORMANCE CURVE for AC MOTOR

Model No E110097.00

Curve at 230 Volts HP 1.00 PHASE 1
60 HZ
1 HP VOLTS 115/230

Catalog No E110097.00

HZ 60 RPM 3450



| | | | |
|-----------|--------------------|-----------|------------------|
| FL TORQUE | <u>1.514</u> Lb.Ft | FL AMPS | <u>7.8/3.9</u> |
| BD TORQUE | <u>3.4</u> Lb.Ft | PU TORQUE | <u>3.0</u> Lb.Ft |
| LR TORQUE | <u>4.998</u> Lb.Ft | LR AMPS | <u>37.1</u> |
| WINDING | K632184-3 | Date | <u>3/27/2018</u> |