

# PRODUCT INFORMATION PACKET

Model No: 5KH35GNA229  
Catalog No: H676  
1/3,1725,DP,56Z,1/60/115  
Open Drip Proof (ODP)



Regal and Marathon are trademarks of Regal Beloit Corporation or one of its affiliated companies.

©2018 Regal Beloit Corporation, All Rights Reserved. MC017097E





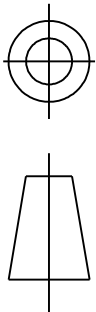
### Nameplate Specifications

Output HP	<b>0.33 Hp</b>	Output KW	<b>0.25 kW</b>
Frequency	<b>60 Hz</b>	Voltage	<b>115 V</b>
Current	<b>6.2 A</b>	Speed	<b>1725 rpm</b>
Service Factor	<b>1</b>	Phase	<b>1</b>
Efficiency	<b>64 %</b>	Duty	<b>Continuous</b>
Insulation Class	<b>B</b>	KVA Code	<b>R</b>
Frame	<b>56Z</b>	Enclosure	<b>Drip Proof</b>
Overload Protector	<b>N/R</b>	Ambient Temperature	<b>40 °C</b>
Drive End Bearing Size	<b>6203</b>	Opp Drive End Bearing Size	<b>6203</b>
UL	<b>Recognized</b>	CSA	<b>Yes</b>
CE	<b>N</b>		

### Technical Specifications

Electrical Type	<b>Split Phase</b>	Starting Method	<b>SM</b>
Poles	<b>4</b>	Rotation	<b>Selective Counterclockwise</b>
Mounting	<b>Rigid base</b>	Motor Orientation	<b>Any</b>
Drive End Bearing	<b>BALL</b>	Opp Drive End Bearing	<b>BALL</b>
Frame Material	<b>Rolled Steel</b>	Overall Length	<b>9.57 in</b>
Frame Length	<b>5.79 in</b>	Shaft Diameter	<b>0.500 in</b>
Shaft Extension	<b>1.5 in</b>		
Outline Drawing	<b>52A102479P1</b>	Connection Diagram	<b>52A105377AA</b>

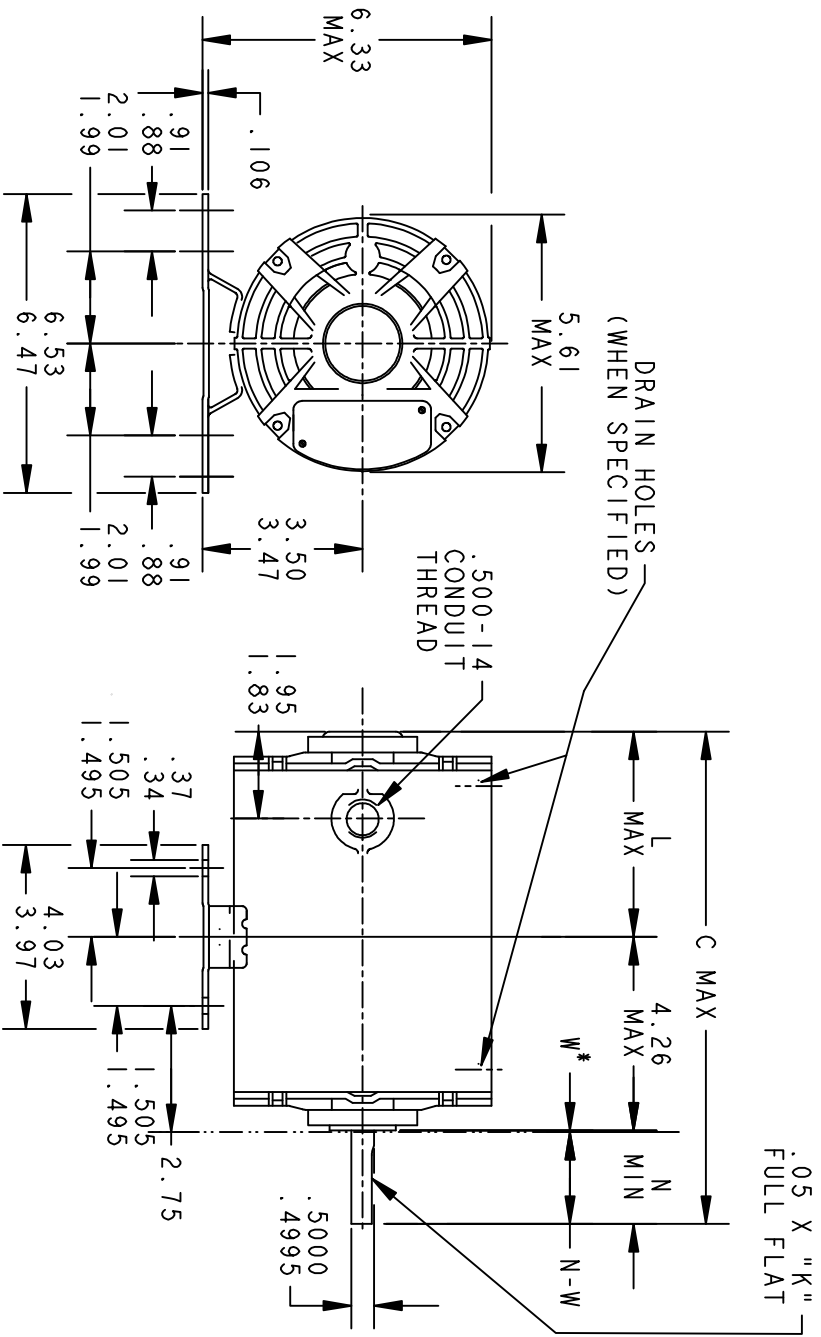
This is an uncontrolled document once printed or downloaded and is subject to change without notice. Date Created: 06/29/2018



THIRD ANGLE PROJECTION

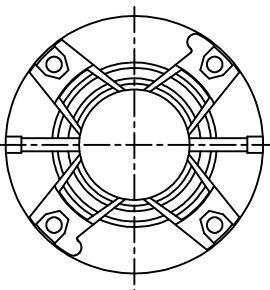
REVISIONS

REV.	DESCRIPTION	DATE	APPROVED
5	REDRAWN NO CHANGE T196-22390	07/29/96	MDP
6	FORMAT CHG PER ISAAC 05-1777	01/04/06	RAJKUMAR



\*W IS A CLEARANCE DUE TO VARIATION IN PARTS & ASSEMBLY.

PT	TYPE	GE SIZE	NEMA FR	C	K	L	N	N-W
2	KH	36	56Z	10.00	1.16	4.29	1.50	1.63/1.41
1	KH	35	56Z	9.57	1.16	3.86	1.50	1.63/1.41



VIEW SHOWING  
PE VENTILATION  
OPENINGS



REGAL-BELOIT CORPORATION

OUTLINE

FORM N-GENERAL PURPOSE MOTOR-DRIP PROOF  
WELDED BASE-BALL OR SLEEVE BEARING

SIZE DRAWING  
A

52A102479

REV 6

SCALE: 0.250

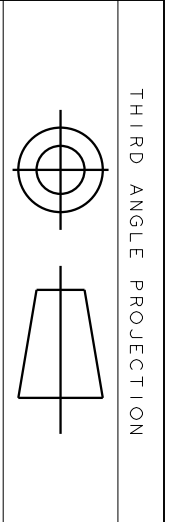
REF. No.:

SHEET 1 of 1

SIGNATURES		DATE
MODEL	RRF	11/08/77
DETAIL		
CHECKED		
ENGRG		
MFG		
FOR ADDITIONAL INFO REFER TO:		
APPLIED PRACTICES	QUALITY	
DIMENSIONS ARE IN INCHES	ISSUED	MDP 07/29/96

MATERIAL

SOLID MODEL: 52A102479

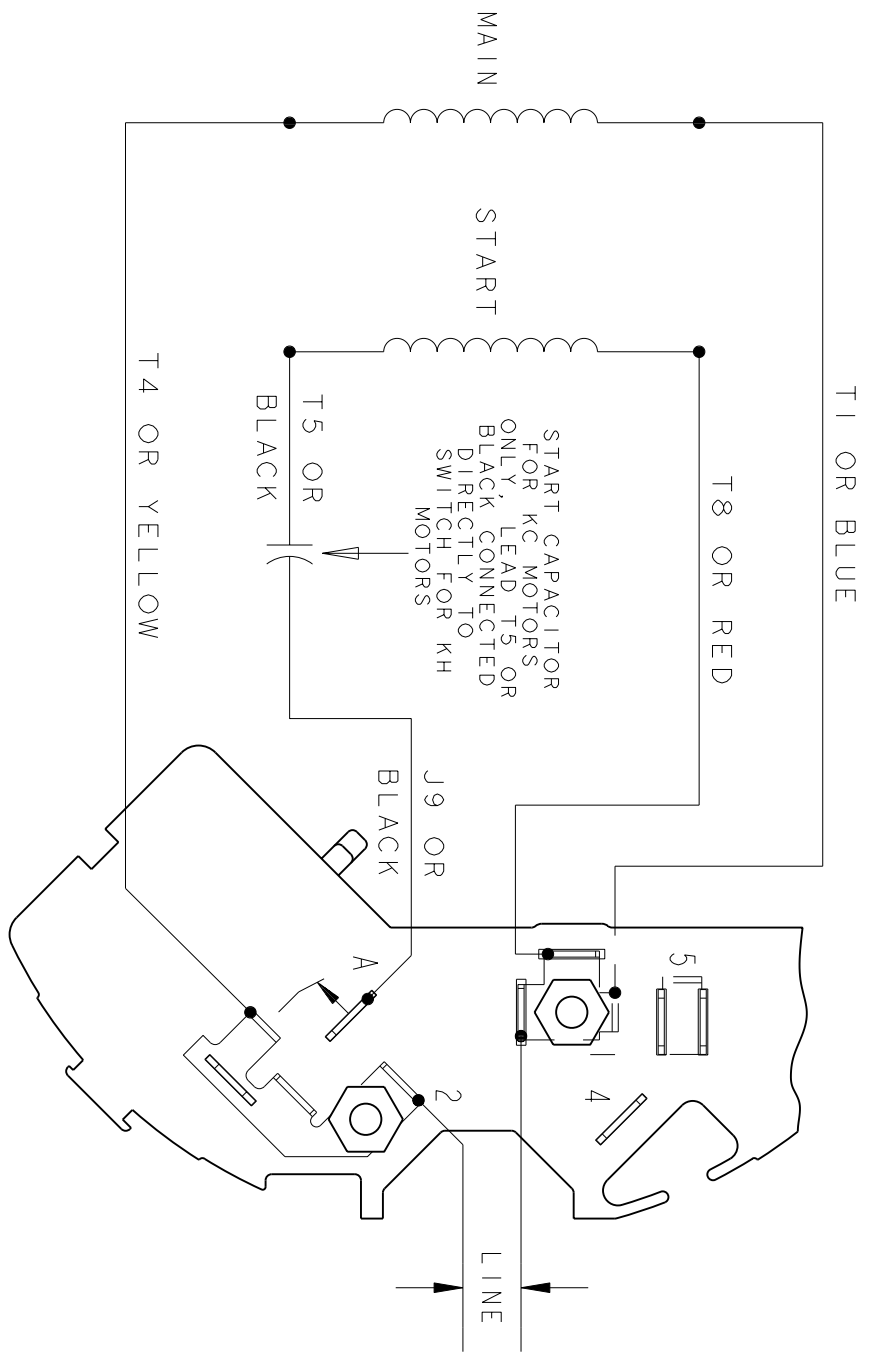


THIRD ANGLE PROJECTION

REVISIONS

REV.	DESCRIPTION	DATE	APPROVED
1	UPDATED FORMAT	11/10/05	MAM

EITHER ROTATION - SINGLE VOLTAGE  
TYPE KC, OR KH



NOTE #1 - TO REVERSE ROTATION INTERCHANGE BLACK (T5-KH OR J9-KC) AND RED (T8) LEADS.

NOTE #2 - WHEN MORE THAN ONE CAPACITOR IS USED CONNECT IN PARALLEL.

REF. DIAG. - 121A850		SWITCH (C) - 115D958AB	
CONNECTION LABEL - 52X332047			
<b>REGAL-BEVOLT CORPORATION</b>			
<b>CONNECTION DIAGRAM</b>			
<b>FME: 30 FRAME SWITCH REDESIGN</b>			
M.F.G			
CHECKED			
ENGRG			
QUALITY			
ISSUED		M.D.P. 06/29/87	
APPLIED PRACTICES		M.D.P.	
DIMENSIONS ARE IN INCHES		SCALE: 1.000	
MATERIAL		REF. No:	
SOLID MODEL: 52A105377AA		SHEET 1 of 1	