

PRODUCT INFORMATION PACKET

marathon[®]
Motors

Model No: 056T17F15666
Catalog No: G347A
1,1800,TEFC,56,3/60/230/460
Totally Enclosed Fan Cooled (TEFC)



Regal and Marathon are trademarks of Regal Beloit Corporation or one of its affiliated companies.
©2018 Regal Beloit Corporation, All Rights Reserved. MC017097E

REGAL[®]



Nameplate Specifications

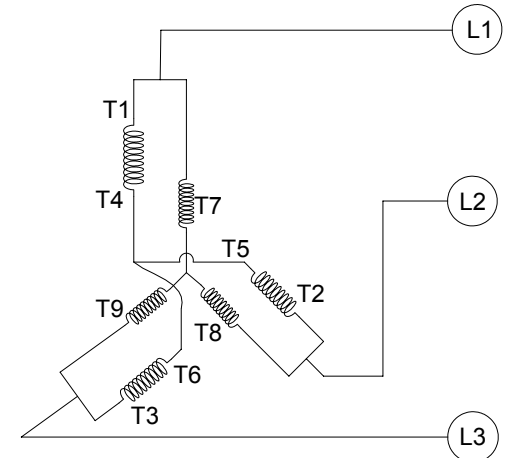
Output HP	1 Hp	Output KW	0.75 kW
Frequency	60 Hz	Voltage	230/460 V
Current	3.3/1.7 A	Speed	1725 rpm
Service Factor	1.15	Phase	3
Efficiency	85.5 %	Duty	Continuous
Insulation Class	B	Design Code	A
KVA Code	P	Frame	56
Enclosure	Totally Enclosed Fan Cooled	Overload Protector	No
Ambient Temperature	40 °C	Drive End Bearing Size	6205
Opp Drive End Bearing Size	6203	UL	Recognized
CSA	Y	CE	Y
IP Code	43		

Technical Specifications

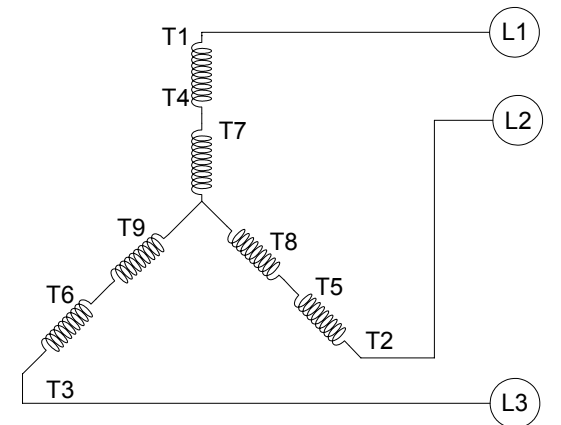
Electrical Type	Squirrel Cage Induction Run	Starting Method	Across The Line
Poles	4	Rotation	Reversible
Mounting	Rigid base	Motor Orientation	Horizontal
Drive End Bearing	Ball	Opp Drive End Bearing	Ball
Frame Material	Rolled Steel	Shaft Type	NEMA 56
Overall Length	14.62 in	Frame Length	8.65 in
Shaft Diameter	0.625 in	Shaft Extension	1.88 in
Assembly/Box Mounting	F1 Only		
Outline Drawing	OL56100114-001	Connection Diagram	CDTD103

This is an uncontrolled document once printed or downloaded and is subject to change without notice. Date Created: 07/02/2018

CCW LOW VOLTAGE



CCW HIGH VOLTAGE



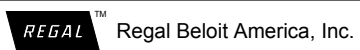
VIEW OF TERMINAL END

- NOTE:
1. TO REVERSE ROTATION, INTERCHANGE ANY TWO LINE CONNECTIONS TO L1, L2, OR L3.
 2. CONNECTION DIAGRAM-NAMEPLATE DD10038

DRAWING REVISION A	REVISION BY G. RODRIGUEZ	DATE 07-06-2016
ECO	APPROVED BY R. VALENZUELA	DATE 07-06-2016
ECO DESCRIPTION		
<small>COPYRIGHT REGAL BELOIT AMERICA, INC. ALL RIGHTS RESERVED. PROPRIETARY AND CONFIDENTIAL INFORMATION - THIS DOCUMENT IS THE PROPERTY OF REGAL BELOIT AMERICA, INC. (OWNER) AND CONTAINS OWNER'S PROPRIETARY INFORMATION. ANY PERSON, CORPORATION OR OTHER FIRM RECEIVING IT IS DEEMED, BY RECEIVING IT, TO AGREE THAT IT, AND/OR ANY PART OF IT, SHALL NOT BE DISCLOSED TO ANY PERSON, CORPORATION OR OTHER ENTITY, DUPLICATED, AND/OR USED, EXCEPT AS EXPRESSLY APPROVED IN WRITING IN ADVANCE BY OWNER. THIS DOCUMENT SHALL BE RETURNED TO OWNER UPON REQUEST. IT MAY BE SUBJECT TO CERTAIN RESTRICTIONS UNDER APPLICABLE EXPORT CONTROL LAWS AND REGULATIONS.</small>		

TOLERANCES UNLESS OTHERWISE SPECIFIED:	
DEC.	INCH mm ANGLE
.X	+0.1 [-2.5] ±0.5°
.XX	±0.01 [±0.25]
.XXX	±0.005 [±0.127]
.XXXX	±0.0005 [±0.0127]
REMOVE BURRS & BREAK SHARP	
EDGES: .003/.015 [.076/.381]	
CORNER FILLETS: .02 [.51]	
MACHINED SURFACES: 125/3.2	
mm SHOWN IN [BRACKETS]	

DRAWN BY G. RODRIGUEZ		DATE 07-06-2016	
APPROVED BY R. VALENZUELA		DATE 07-06-2016	
REFERENCE SKT52A105383CA		MATERIAL	
THIRD ANGLE PROJECTION		PROCESS/FINISH	
SIZE B	DRAWING NUMBER CDTD103	SHEET 1 OF 1	



CONN DIAGRAM-EXTERNAL

CERTIFICATION DATA SHEET

Model#: 56T17F15666 A **WINDING#:** ZT4257 FR 3
CONN. DIAGRAM: CDTD103 **ASSEMBLY:** F1 ONLY
OUTLINE: OL56100114-001

TYPICAL MOTOR PERFORMANCE DATA

HP	KW	SYNC. RPM	F.L. RPM	FRAME	ENCLOSURE	KVA CODE	DESIGN
1&3/4	.75&.56	1800	1725&1425	56	TEFC	P	A

PH	Hz	VOLTS	FL AMPS	START TYPE	DUTY	INSL	S.F	AMB°C	ELEVATION
3	60/50	230/460#190/ 380	3.3/1.65&3.1/1 .55	ACROSS THE LINE	CONTINUOU S	B3	1.15/1.15	40	3300

FULL LOAD EFF: 85.5&84	3/4 LOAD EFF: 84	1/2 LOAD EFF: 81.5	GTD. EFF	ELEC. TYPE	NO LOAD AMPS
FULL LOAD PF: 68&66	3/4 LOAD PF: 59.5	1/2 LOAD PF: 46.5	82.5	SQ CAGE IND RUN	2.3 / 1.2

F.L. TORQUE	LOCKED ROTOR AMPS	L.R. TORQUE	B.D. TORQUE	F.L. RISE°C
3 LB-FT	34 / 17	13.7 LB-FT 457	16.8 LB-FT 560	30

SOUND PRESSURE @ 3 FT.	SOUND POWER	ROTOR WK^2	MAX. WK^2	SAFE STALL TIME	STARTS /HOUR	APPROX. MOTOR WGT
62 dBA	72 dBA	0.12 LB-FT^2	0 LB-FT^2	15 SEC.	2	48 LBS.

*** SUPPLEMENTAL INFORMATION ***

DE BRACKET TYPE	ODE BRACKET TYPE	MOUNT TYPE	ORIENTATION	SEVERE DUTY	HAZARDOUS LOCATION	DRIP COVER	SCREENS	PAINT
STANDARD	BRAKE	RIGID	HORIZONTAL	FALSE	NONE	FALSE	NONE	GRAY (POWDER)

BEARINGS		GREASE	SHAFT TYPE	SPECIAL DE	SPECIAL ODE	SHAFT MATERIAL	FRAME MATERIAL
DE	OPE	POLYREX EM	STANDARD 56	NONE	NONE	1144 STRESSPROOF (C-223)	ROLLED STEEL
BALL	BALL						
6205	6203						

THERMO-PROTECTORS				THERMISTORS	CONTROL	SPACE /n HEATERS
THERMOSTATS	PROTECTORS	WDG RTDs	BRG RTDs			
NONE	NOT	NONE	NONE	NONE	FALSE	NONE VOLTS

If Inverter equals NONE, contact factory for further information

*
N
O
T
E
S
*

INVERTER TORQUE: NONE
INV. HP SPEED RANGE: NONE
ENCODER: NONE NONE NONE NONE NONE PPR
BRAKE: PROVISIONS FOR KIT NONE NONE P/N NONE NONE NONE NONE FT-LB NONE V NONE Hz

DATE: 06/28/2017 07:22:47 AM
 FORM 3531 REV.3 02/07/99
 ** Subject to change without notice.

Date:

Customer:

Attention:

Submitted by:

VINAYAK VERARTE



Submital

Data @ 460 V

Motor Load Data

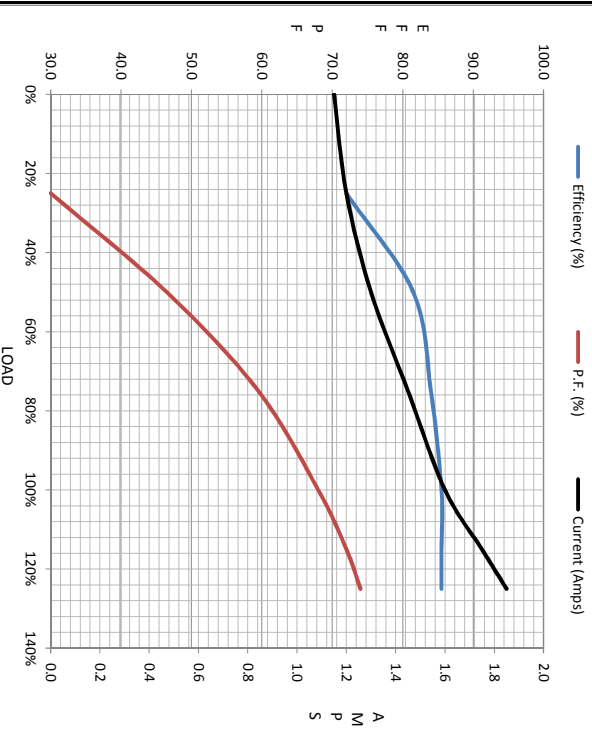
Load	0%	25%	50%	75%	100%	115%	125%	LR
Current (Amps)	1.15	1.20	1.30	1.45	1.60	1.75	1.85	17.0
Torque (ft-lb)	0.00	0.75	1.50	2.25	3.0	3.5	3.8	13.7
RPM	1800	1790	1785	1775	1765	1,760	1755	0
Efficiency (%)		72.0	81.5	84.0	85.5	85.5	85.5	
P.F. (%)	7.5	30.0	46.5	59.5	68.0	72.0	74.0	69.5

Motor Speed Data

	LR	Pull-Up	BD	Rated	Idle
Speed (RPM)	0	115	1270	1765	1800
Current (Amps)	17.0	16.0	11.0	1.60	1.15
Torque (ft-lb)	13.7	12.5	16.8	3.0	0.00

Information Block

HP	1.0			
Sync. RPM	1800			
Frame	143			
Enclosure	TEFC			
Construction	TFR			
Voltage	230/460#190/380 V			
Frequency	60 Hz			
Design	A			
LR Code letter	P			
Service Factor	1.15			
Temp Rise @ FL	30 °C			
Duty	CONT			
Ambient	40 °C			
Elevation	1,000 feet			
Rotor/Shaft wkt	0.12 Lb-Ft²			
Rel Wdg	ZT4257 FR			
Sound Pressure @ 1M	62 dBA			
VFD Rating	NONE			
Outline Dwg	QL56100114-001			
Conn. Diag	CDTD103			
Additional Specifications:				
0				
0				
R1	R2	X1	X2	Xm
2.4250	1.6020	3.1050	2.7720	75.8630



Speed - Torque Curve

