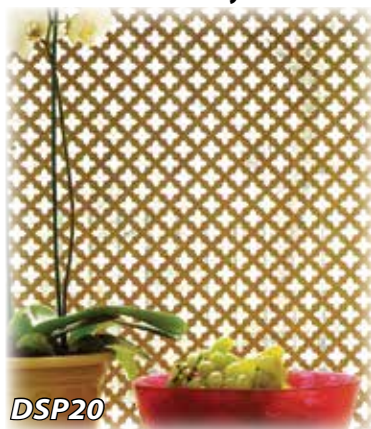
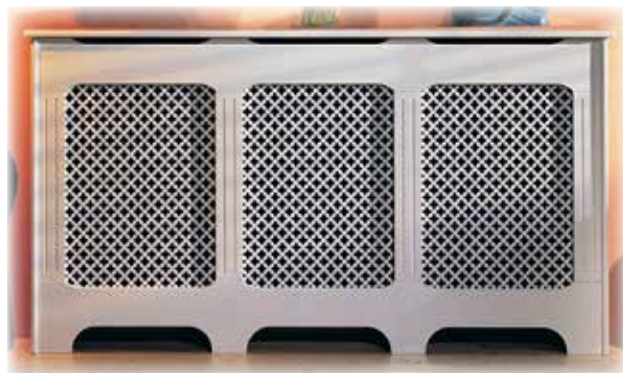


Decorative MDF Screening Panels

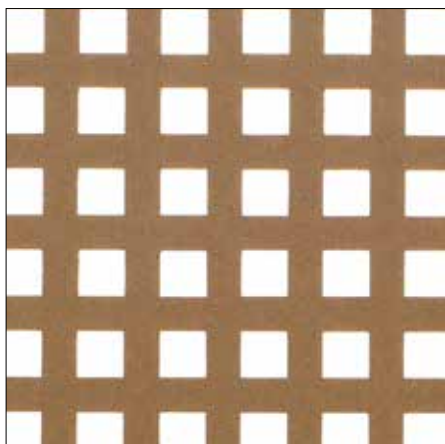
Add a stylish flair to a variety of panel applications. Our diverse range of perforated panels are ideal for:



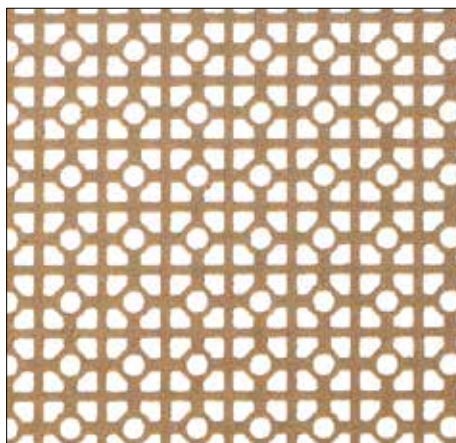
- Panels are produced in "landscape" position
- Decorative Elements on Furniture
- Interior Walls and Doors
- Cabinet Doors & Drawer Fronts
- Display Fixtures
- Ceiling Panels
- All Panels are 2' High x 6' Wide x 1/8" Thick (3mm)



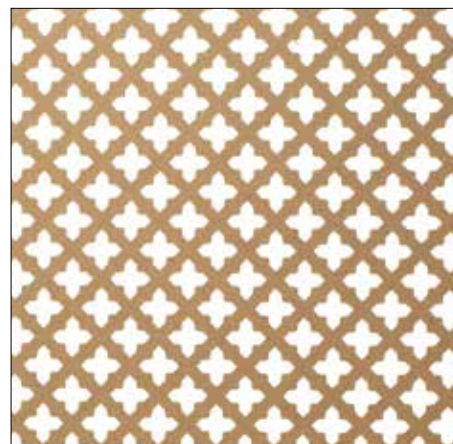
PATTERNS



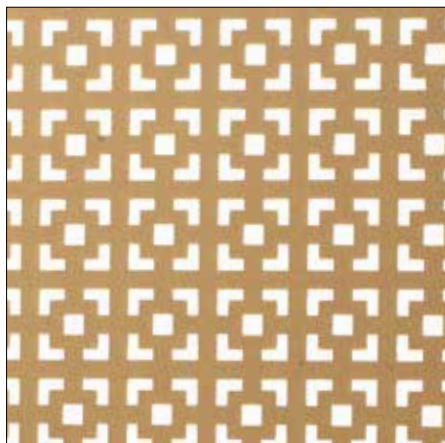
DSP5-NAT
32% Open



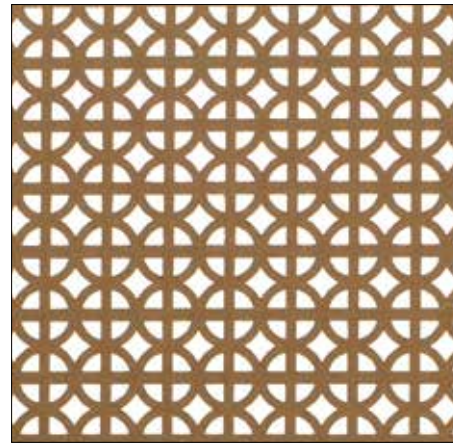
DSP10-NAT
30% Open



DSP20-NAT
42% Open



DSP15-NAT
30% Open



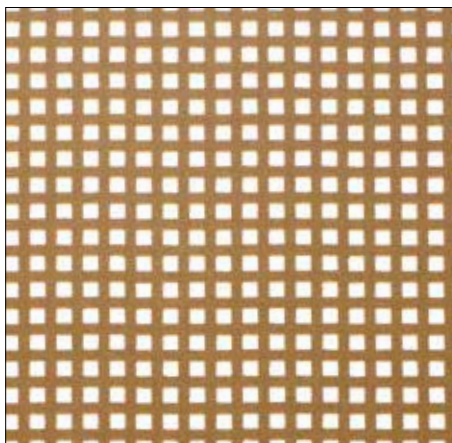
DSP25-NAT
49% Open

PAINTING:

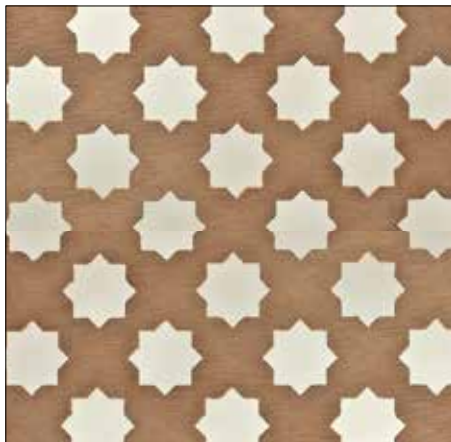
- 1) You must prime the panel before painting.
- 2) When painting the MDF panels, it is recommended to use a roller or spray paint. Using a paint brush is more difficult and tends to cause brush marks.
- 3) The MDF panels may be painted on both sides if desired, for they have smooth surfaces.

** Opening represents air flow. The larger opening the more air flow. For example radiators may want larger openings & screen applications may want less.*

PATTERNS



DSP30-NAT
33% Open



DSP55-NAT
30% Open



DSP35-NAT
45% Open



DSP45-NAT
45% Open



DSP50-NAT
36% Open

PAINTING:

- 1) You must prime the panel before painting.
- 2) When painting the MDF panels, it is recommended to use a roller or spray paint. Using a paint brush is more difficult and tends to cause brush marks.
- 3) The MDF panels may be painted on both sides if desired, for they have smooth surfaces.

** Opening represents air flow. The larger opening the more air flow. For example radiators may want larger openings & screen applications may want less.*



DSP45

DOOR PANELS

Available in Maple, White Oak and Cherry

DP-001-*

13-1/2"W x 1-1/16"D x 21-1/4"H



DP-001-MP

(MAPLE)

DP-001-WHO

(WHITE OAK)

DP-001-CH

(CHERRY)

DP-002-*

12-7/8"W x 3/4"D x 18-7/8"H



DP-002-MP

(MAPLE)

DP-002-WHO

(WHITE OAK)

DP-002-CH

(CHERRY)

DP-006-*

12-7/8"W x 3/4"D x 18-7/8"H



DP-006-MP

(MAPLE)

DP-006-WHO

(WHITE OAK)

DP-006-CH

(CHERRY)

DP-007-*

12-7/8"W x 3/4"D x 18-7/8"H



DP-007-MP

(MAPLE)

DP-007-WHO

(WHITE OAK)

DP-007-CH

(CHERRY)

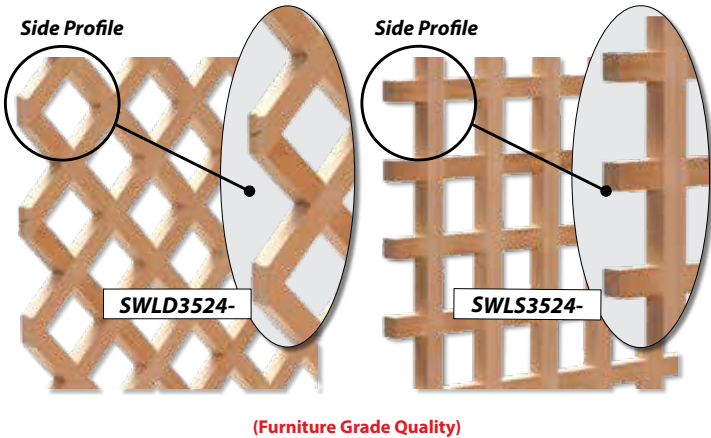
SOLID NORTH AMERICAN HARDWOOD LATTICE INSERT PANELS

Standard

Red Oak, Maple or Cherry

Available in square or diagonal patterns, these inserts are ideal for cabinet door inserts, residential and commercial casework, wine cabinets, closet storage systems, entertainment centers & ceiling inserts. Sanded & ready to finish.

Panel Size: 35-3/4" x 24" x 3/8" thick
Cell Size: 1" x 1" Slat Size: 3/8"



Part #	Finish	Pattern
SWLD3524-RO	Red Oak	Diagonal
SWLD3524-MP	Maple	Diagonal
SWLD3524-CH	Cherry	Diagonal
SWLS3524-RO	Red Oak	Square
SWLS3524-MP	Maple	Square
SWLS3524-CH	Cherry	Square

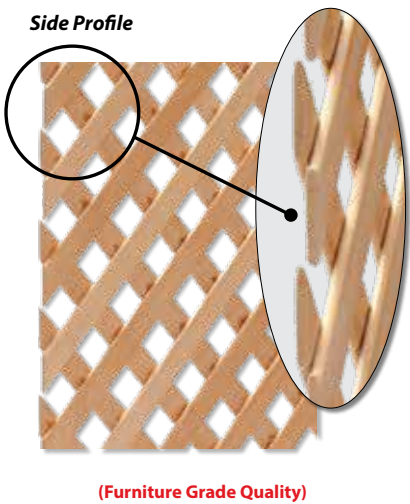


Mini

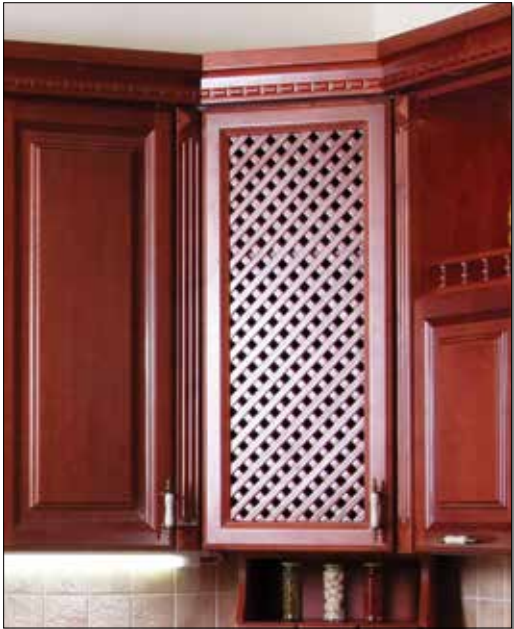
Red Oak, Maple, Cherry, or Alder

Available in a diagonal pattern, this insert makes a unique accent door in kitchen cabinets, dining room or bedroom furniture. It can also be used as a ceiling insert panel for an unusual wood grid look. Sanded & ready to finish.

Panel Size: 47-1/4" x 23-5/8" x 1/8" strip thickness
Cell Size: 1/2" x 1/2" Slat Size: 1/2"



Part #	Finish	Pattern
SWLM4723-RO	Red Oak	Diagonal
SWLM4723-MP	Maple	Diagonal
SWLM4723-CH	Cherry	Diagonal
SWLM4723-AL	Alder	Diagonal



The Beauty of Cane



- *All natural material
(Synthetic version available - #P109-S)*
- *Can be used in a variety of applications
such as wall coverings, case good &
furniture panels, chair seats & backs,
wainscoting, picture frames and hampers.*
- *Large selection of styles to suite any decor.*

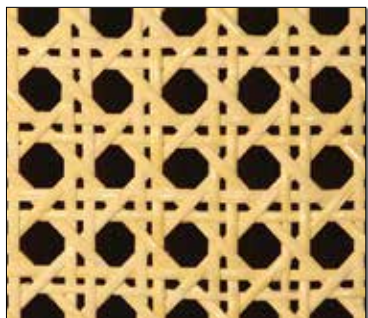


The Beauty of Cane

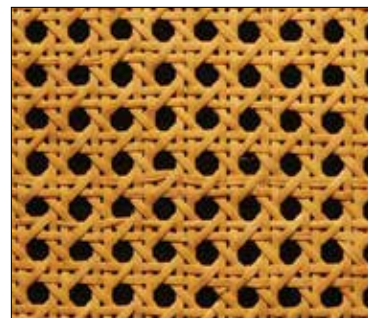


SYNTHETIC CANE

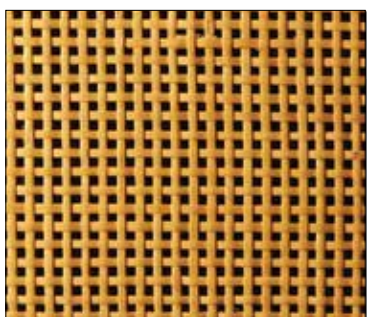
P109-S (1/2" Mesh Paper)
Roll Size: 2' x 50'



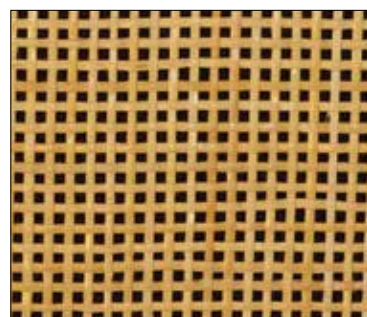
1600-NAT (1/2" Mesh)
Roll Size: 2' x 50'



111-NAT (3/8" Mesh)
Roll Size: 2' x 50'



607-NAT (6 Strands per Inch)
Roll Size: 2' x 50'



358-NAT (5 Strands per Inch)
Roll Size: 2' x 50'



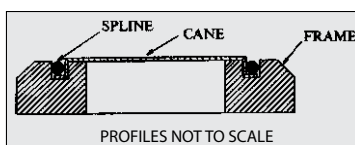
HICK-1 (3/8" Reed Width)
Sheet Size: 4.5' x 10'



207-NAT (3/16" Strands)
Roll Size: 2' x 50'



206-NAT (1/8" Strands)
Roll Size: 2' x 50'



Part# SPLINE for 7/32" or 1/4" Groove
Random lengths

Part# SPLINE-8 for 3/16" Groove
Random lengths



kentdesign
& manufacturing

Woven Wire Grilles

Our grilles offer a creative option for fine period furniture ranging from English Country to French Provincial. For screening those areas which may compromise the aesthetics of a home or office environment, our close mesh grilles are available in a variety of designs that present an attractive fascia.

Available in electroplated metallic finishes and powder coated colors to suit any application.



Standard Sheet Sizes:
2' x 6' | 3' x 4' | 4' x 6'
Custom Sizes Also Available

16" x 42" | 18" x 24" | 18" x 48"
Available in Select Patterns & Finishes



FINISHES

BRIGHTS:

Plated finish with full depth brilliance of underlying color and high sheen.



BRIGHT BRASS
(BB)



BRIGHT COPPER
(BCOP)



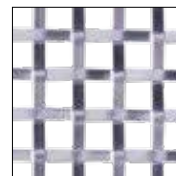
BRIGHT NICKEL
(BN)



BRIGHT CHROME
(BCHR)

STAINLESS STEEL:

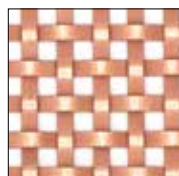
304 Stainless offers significant brilliance with a clean, clear finish.



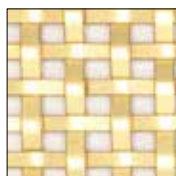
STAINLESS STEEL
(PATTERN 286S ONLY)

SATINS:

A muted sheen further softened with a brushed appearance.



SATIN COPPER
(SCOP)



SATIN BRASS
(SATB)



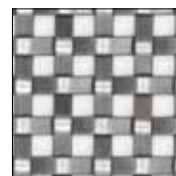
SATIN NICKEL
(SN)



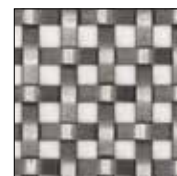
SATIN CHROME
(SCHR)



SATIN STAINLESS LOOK
(SS)



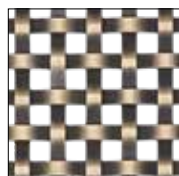
ANTIQUÉ SILVER
(AS)



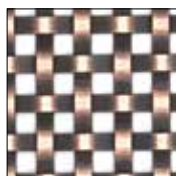
ANTIQUÉ PEWTER
(AP)

ANTIQUES:

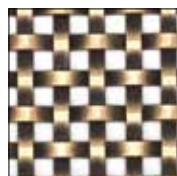
A darkened surface that is then highlighted to reveal the base plate color.



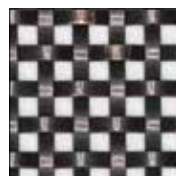
ANTIQUÉ BRASS
(AB)



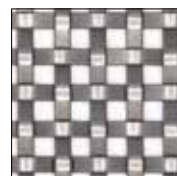
ANTIQUÉ COPPER
(AC)



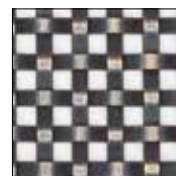
ANTIQUÉ LIGHT
BRASS (LAB)



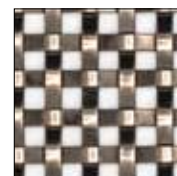
ANTIQUÉ STATUARY
BRONZE (SB)



ANTIQUÉ DARK
PEWTER (DAP)



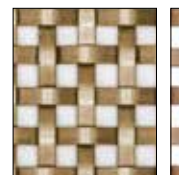
ANTIQUÉ OLD ENGLISH
(OE)



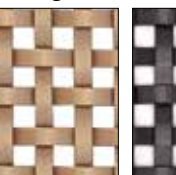
ANTIQUÉ NICKEL
(AN)

DESIGNER METALLICS:

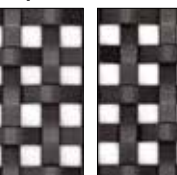
Powder coated designer finishes are produced to create a metallic look.



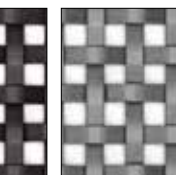
GOLD
(DGD)



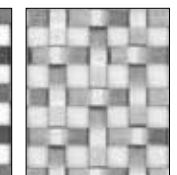
SATIN BRASS
(DSB)



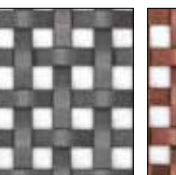
BRONZE
(DBZ)



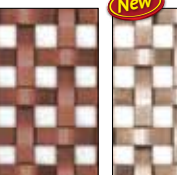
STATUARY BRONZE
(DSBZ)



ANTIQUÉ SILVER
(DAS)

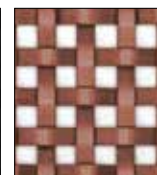


SILVER
(DSL)



SATIN PEWTER
(DSP)

 New



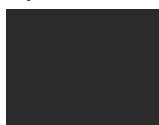
COPPER
(DCOP)



CHAMPAGNE
(DCH)

SOLID COLORS:

A powder coated solid color used to enhance almost any color scheme.



FLAT BLACK
(FB)



SEMI GLOSS
BLACK (BK)



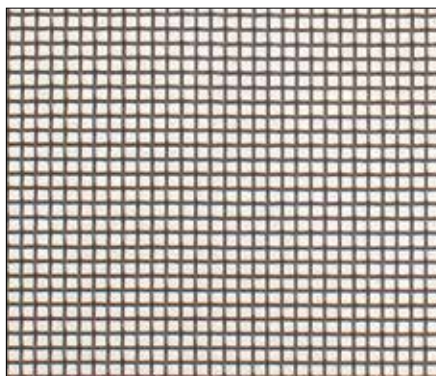
LINEN
(1013)

Finishes may differ slightly from photo. Please request a sample.



WIRE MESH SHEET

Custom cutting not available on the following sizes:
16" x 42", 18" x 24", 18" x 48"



.018" wire thickness



Part #	Size
New! WWM-4148-*	41" x 48"
New! WWM-1824-AB	18" x 24"
New! WWM-1848-AB	18" x 48"

A two-tone effect can be achieved by combining the wire mesh sheet with our woven wire grilles

Rosettes can also be applied for a more elegant appearance.
On select patterns only

Wire Mesh Sheet Finishes

Brights

- Bright Brass (BB)
- Bright Copper (BCOP)
- Bright Nickel (BN)
- Bright Chrome (BCHR)

Satins

- Satin Copper (SCOP)
- Satin Brass (SATB)
- Satin Nickel (SN)
- Satin Chrome (SCHR)
- Satin Stainless Look (SS)

Antiques

- Antique Brass (AB)
- Antique Copper (AC)
- Antique Silver (AS)
- Antique Statuary Bronze (SB)
- Antique Pewter (AP)
- Antique Old English (OE)
- Antique Nickel (AN)

Powder Coated

- Flat Black (FB)

Flat Wire Style

PATTERNS



Single Crimped Flat Wire

.031" x .094" wire size,
5/8" & 3/8" mesh size

We have the capability to produce custom rosette grilles with the options shown.

Button
3
5/8"



Available on 3' x 4' & 2' x 6' full sheets with rosettes placed on every other knuckle or on custom cut sizes.

Part #	Size
WWG-MJ09-* -2	2' x 6'
WWG-MJ09-*	3' x 4'



Single Crimped Flat Wire

.031" x .094" wire size,
3/16" mesh size

Part #	Size
WWG-RE25-* -2	2' x 6'
WWG-RE25-*	3' x 4'
New! WWG-RE25-* -24	18" x 24"
New! WWG-RE25-* -48	18" x 48"



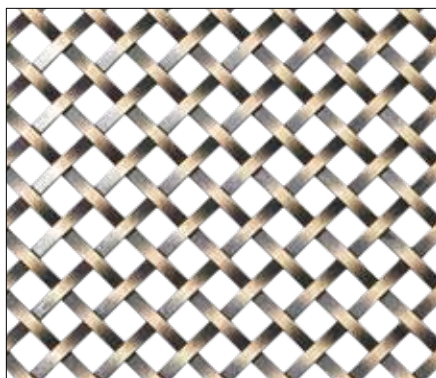
RECYCLED STEEL

PACKING FEE (#WWG-PF)

Flat Wire Style

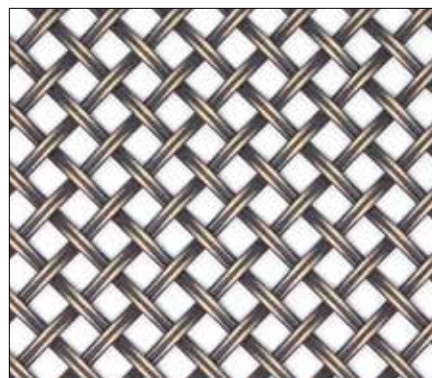
PATTERNS

Custom cutting not available on the following sizes:
16" x 42", 18" x 24", 18" x 48"



**Single Crimped
Flat Wire**

1/8" x 1/16" wire size,
3/8" mesh size

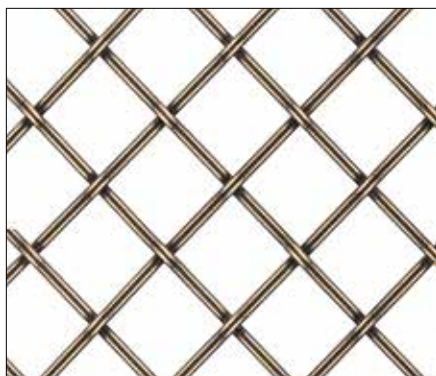


**Single Crimped
Flat/Fluted Wire**

1/8" x 1/16" wire size,
3/8" mesh size

Part #	Size
WWG-286S-*-2	2' x 6'
WWG-286S-*	3' x 4'
NEW WWG-286S-*-24	18" x 24"
NEW WWG-286S-*-48	18" x 48"

Part #	Size
WWG-DK08-*-2	2' x 6'
WWG-DK08-*	3' x 4'



**Press Crimped
Flat/Fluted Wire**

1/8" x 1/16" wire size,
1" mesh size

We have the capability
to produce custom
rosette grilles with the
options shown.



Available on 3' x 4' & 2' x 6'
full sheets with rosettes
placed on every other
knuckle or on custom
cut sizes.

Part #	Size
WWG-182P-*-2	2' x 6'
WWG-182P-*	3' x 4'
WWG-182P-*-6	4' x 6'



**Press Crimped
Flat Wire**

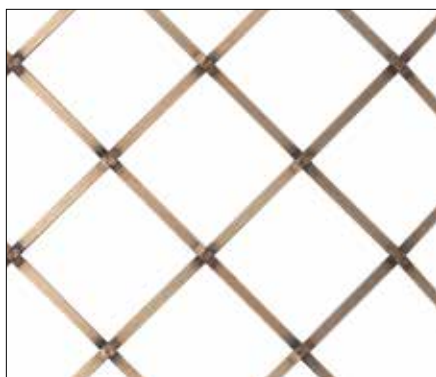
1/8" x 1/16" wire size,
1" mesh size

We have the capability
to produce custom
rosette grilles with the
options shown.



Available on 3' x 4' & 2' x 6'
full sheets with rosettes
placed on every other
knuckle or on custom
cut sizes.

Part #	Size
WWG-186P-*-2	2' x 6'
WWG-186P-*	3' x 4'
WWG-186P-*-6	4' x 6'



**Press Crimped
Flat Wire**

1/8" x 1/16" wire size,
1-1/2" mesh size

We have the capability
to produce custom
rosette grilles with the
options shown.



Available on 3' x 4' & 2' x 6'
full sheets with rosettes
placed on every other
knuckle or on custom
cut sizes.

Part #	Size
WWG-686P-*-2	2' x 6'
WWG-686P-*	3' x 4'
WWG-686P-*-6	4' x 6'



**Press Crimped
Flat Wire**

1/8" x 1/16" wire size,
2" mesh size

We have the capability
to produce custom
rosette grilles with the
options shown.



Available on 3' x 4' & 2' x 6'
full sheets with rosettes
placed on every other
knuckle or on custom
cut sizes.

Part #	Size
WWG-8816P-*-2	2' x 6'
WWG-8816P-*	3' x 4'
WWG-8816P-*-6	4' x 6'
WWG-GM8816P-*	16" x 42"



RECYCLED STEEL

PACKING FEE (#WWG-PF)

Round Wire Style

PATTERNS

Custom cutting not available on the following sizes:
16" x 42", 18" x 24", 18" x 48"



Inter Crimped Round Wire
.047" wire size,
5/8" & 3/16" mesh size

Part #	Size
WWG-518316C-*2	2' x 6'
WWG-518316C-*	3' x 4'
WWG-518316C-*6	4' x 6'



Flat Crimped Round Wire
.072" wire size,
1" & 1/4" mesh size

We have the capability to produce custom rosette grilles with the options shown.

Button
3
5/8"



Available on 3' x 4' & 2' x 6' full sheets with rosettes placed on every other knuckle or on custom cut sizes.

Part #	Size
WWG-114F-*2	2' x 6'
WWG-114F-*	3' x 4'
WWG-114F-*6	4' x 6'
WWG-GM114F-*	16" x 42"
New WWG-114F-*24	18" x 24"
New WWG-114F-*48	18" x 48"



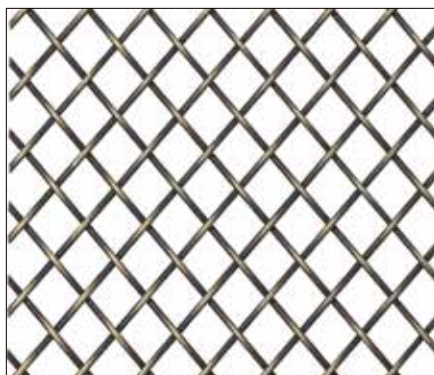
Inter Crimped Round Wire
.080" wire size
1" & 11/32" mesh size

Part #	Size
WWG-11438C-*2	2' x 6'
WWG-11438C-*	3' x 4'
WWG-11438C-*6	4' x 6'



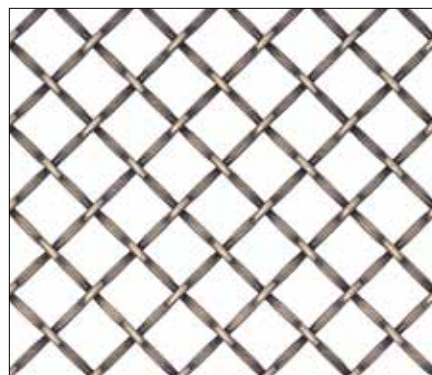
Press Crimped Round Wire
.063" wire size,
1-1/4" & 3/8" mesh size

Part #	Size
WWG-41538P-*2	2' x 6'
WWG-41538P-*	3' x 4'
WWG-41538P-*6	4' x 6'



Single Crimped Round Wire
.063" wire size,
3/8" mesh size

Part #	Size
WWG-215S-*2	2' x 6'
WWG-215S-*	3' x 4'
WWG-215S-*6	4' x 6'



Flat Crimped Round Wire
.072" wire size,
1/2" mesh size

We have the capability to produce custom rosette grilles with the options shown.

Button
1
3/8" Button
2
1/2"



Available on 3' x 4' & 2' x 6' full sheets with rosettes placed on every other knuckle or on custom cut sizes.

Part #	Size
WWG-1214T-*2	2' x 6'
WWG-1214T-*	3' x 4'
WWG-1214T-*6	4' x 6'
New WWG-1214T-*24	18" x 24"
New WWG-1214T-*48	18" x 48"

PACKING FEE (#WWG-PF)



Round Wire Style

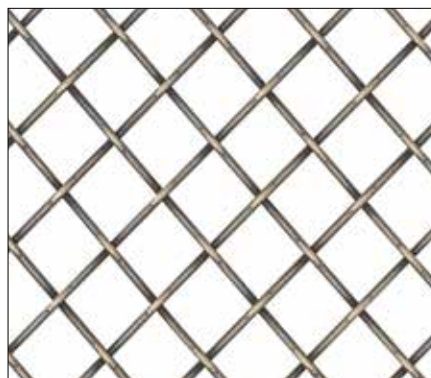
PATTERNS

Custom cutting not available on the following sizes:
16" x 42", 18" x 24", 18" x 48"



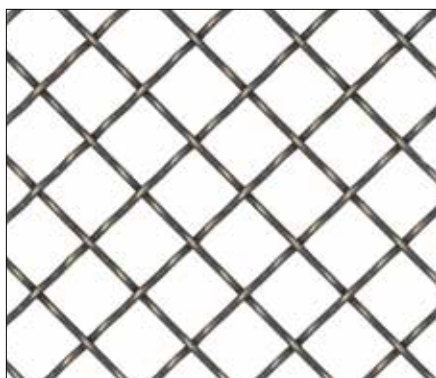
**Inter Crimped
Round Wire**
.063" wire size,
1/2" mesh size

Part #	Size
WWG-1215C-*2	2' x 6'
WWG-1215C-*	3' x 4'
WWG-1215C-*6	4' x 6'



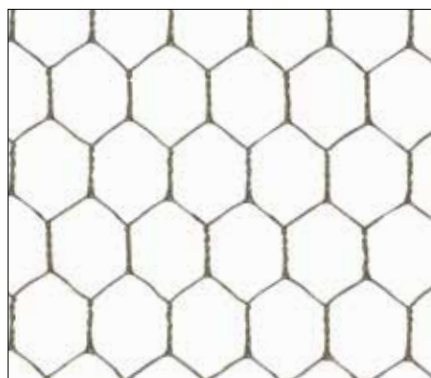
**Press Crimped
Round Wire**
.063" wire size,
1/2" mesh size

Part #	Size
WWG-1215P-*2	2' x 6'
WWG-1215P-*	3' x 4'
WWG-1215P-*6	4' x 6'



**Inter Crimped
Round Wire**
.047" wire size,
1/2" mesh size

Part #	Size
WWG-1218C-*2	2' x 6'
WWG-1218C-*	3' x 4'
WWG-1218C-*6	4' x 6'



**Twist Crimped
Round Aviary Wire**
23 gauge wire size,
1/2" hex mesh size

Part #	Size
WWG-1220T-*	3' x 4'
WWG-1220T-*6	3' x 6'



**Flat Crimped
Round Wire**
.072" wire size,
5/8" mesh size

We have the capability
to produce custom
rosette grilles with the
options shown.



Available on 3' x 4' & 2' x 6'
full sheets with rosettes
placed on every other
knuckle or on custom
cut sizes.

Part #	Size
WWG-5814F-*2	2' x 6'
WWG-5814F-*	3' x 4'
WWG-5814F-*6	4' x 6'



**Inter Crimped
Round Wire**
.063" wire size,
5/8" mesh size

Part #	Size
WWG-5815C-*2	2' x 6'
WWG-5815C-*	3' x 4'
WWG-5815C-*6	4' x 6'



RECYCLED STEEL

PACKING FEE (#WWG-PF)

Round Wire Style

PATTERNS

Custom cutting not available on the following sizes:
16" x 42", 18" x 24", 18" x 48"



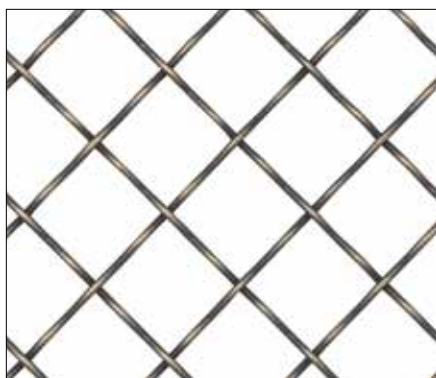
Press Crimped Round Wire
.063" wire size,
5/8" mesh size

Part #	Size
WWG-5815P-*2	2' x 6'
WWG-5815P-*	3' x 4'
WWG-5815P-*6	4' x 6'



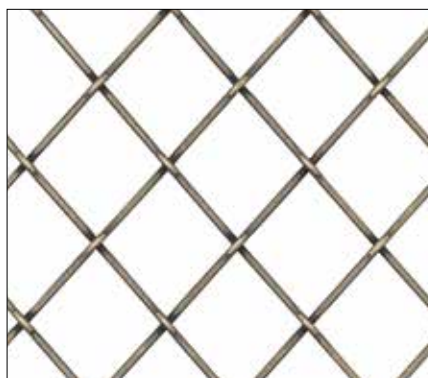
Inter Crimped Round Wire
.080" wire size,
3/4" mesh size

Part #	Size
WWG-313C-*2	2' x 6'
WWG-313C-*	3' x 4'
WWG-313C-*6	4' x 6'



Inter Crimped Round Wire
.063" wire size
3/4" mesh size

Part #	Size
WWG-315C-*2	2' x 6'
WWG-315C-*	3' x 4'
WWG-315C-*6	4' x 6'



Press Crimped Round Wire
.063" wire size,
3/4" mesh size

Part #	Size
WWG-315P-*2	2' x 6'
WWG-315P-*	3' x 4'
WWG-315P-*6	4' x 6'



Flat Crimped Round Wire
.072" wire size,
3/4" mesh size

We have the capability to produce custom rosette grilles with the options shown.



Available on 3' x 4' & 2' x 6' full sheets with rosettes placed on every other knuckle or on custom cut sizes.

Part #	Size
WWG-316F-*2	2' x 6'
WWG-316F-*	3' x 4'
WWG-316F-*6	4' x 6'



Press Crimped Round Wire
.080" wire size,
3/4" mesh size

We have the capability to produce custom rosette grilles with the options shown.



Available on 3' x 4' & 2' x 6' full sheets with rosettes placed on every other knuckle or on custom cut sizes.

Part #	Size
WWG-332P-*2	2' x 6'
WWG-332P-*	3' x 4'
WWG-332P-*6	4' x 6'
WWG-GM332P-*	16" x 42"
WWG-332P-*24	18" x 24"
WWG-332P-*48	18" x 48"



RECYCLED STEEL



Round Wire Style

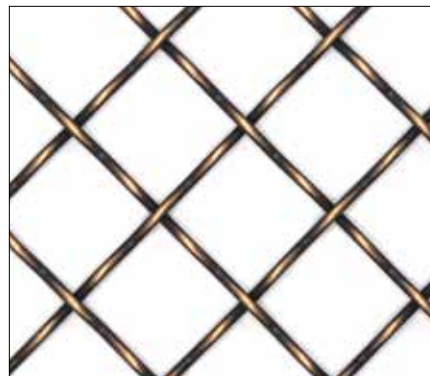
PATTERNS

**Flat Crimped Round Wire**

.080" wire (1 direction),
.072" wire (1/2" direction)
1" x 1/2" Mesh Size

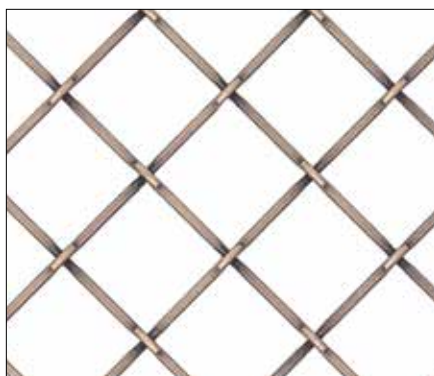
*2' x 6' pattern runs in the 6' direction
3' x 4' pattern runs in the 3' direction*

Part #	Size
WWG-MD11-*2	2' x 6'
WWG-MD11-*	3' x 4'

**Inter Crimped Round Wire**

.092" wire size
1" mesh size

Part #	Size
WWG-132C-*2	2' x 6'
WWG-132C-*	3' x 4'
WWG-132C-*6	4' x 6'

**Flat Crimped Round Wire**

.080" wire size,
1" mesh size

We have the capability to produce custom rosette grilles with the options shown.



Available on 3' x 4' & 2' x 6' full sheets with rosettes placed on every other knuckle or on custom cut sizes.

Part #	Size
WWG-132F-*2	2' x 6'
WWG-132F-*	3' x 4'
WWG-132F-*6	4' x 6'

**Inter Crimped Round Wire**

.092" wire size
1-21/32" mesh size

We have the capability to produce custom rosette grilles with the options shown.



Available on 3' x 4' & 2' x 6' full sheets with rosettes placed on every other knuckle or on custom cut sizes.

Part #	Size
WWG-613C-*2	2' x 6'
WWG-613C-*	3' x 4'
WWG-613C-*6	4' x 6'

**Flat Crimped Round Wire**

.120" wire size,
1-3/4" mesh size

We have the capability to produce custom rosette grilles with the options shown.



Available on 3' x 4' & 2' x 6' full sheets with rosettes placed on every other knuckle or on custom cut sizes.

Part #	Size
WWG-711F-*2	2' x 6'
WWG-711F-*	3' x 4'
WWG-711F-*6	4' x 6'

**Inter Crimped Round Wire**

.092" wire size,
2-1/8" mesh size

We have the capability to produce custom rosette grilles with the options shown.



Available on 3' x 4' & 2' x 6' full sheets with rosettes placed on every other knuckle or on custom cut sizes.

Part #	Size
WWG-812C-*2	2' x 6'
WWG-812C-*	3' x 4'
WWG-812C-*6	4' x 6'



RECYCLED STEEL

Square Wire Style

PATTERNS

Custom cutting not available on the following sizes:
16" x 42", 18" x 24", 18" x 48"



**Inter Crimped
Square Wire**
.063" wire size,
3/4" & 1/4" mesh size

Part #	Size
WWG-31614C-*2	2' x 6'
WWG-31614C-*	3' x 4'
WWG-31614C-*6	4' x 6'



**Inter Crimped
Square Wire**
.063" wire size
1" & 1/4" mesh size

Part #	Size
WWG-11614C-*2	2' x 6'
WWG-11614C-*	3' x 4'
WWG-11614C-*6	4' x 6'



**Press Crimped
Square Wire**
.063" wire size,
1" & 1/4" mesh size

*We have the capability
to produce custom
rosette grilles with the
options shown.*

Button
3
5/8"



*Available on 3' x 4' & 2' x 6'
full sheets with rosettes
placed on every other
knuckle or on custom
cut sizes.*

Part #	Size
WWG-11614P-*2	2' x 6'
WWG-11614P-*	3' x 4'
WWG-11614P-*6	4' x 6'



**Press Crimped
Square Wire**
.063" wire size,
1-1/4" & 3/8" mesh size

Part #	Size
WWG-41638P-*2	2' x 6'
WWG-41638P-*	3' x 4'
WWG-41638P-*6	4' x 6'



**Single Crimped
Square Wire**
.063" wire size,
3/8" mesh size

Part #	Size
WWG-216S-*2	2' x 6'
WWG-216S-*	3' x 4'
WWG-216S-*6	4' x 6'



**Press Crimped
Square Wire**
.063" wire size,
1/2" mesh size

Part #	Size
WWG-1216P-*2	2' x 6'
WWG-1216P-*	3' x 4'
WWG-1216P-*6	4' x 6'

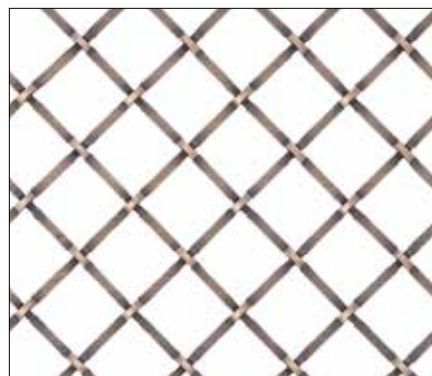
Square Wire Style

PATTERNS

Custom cutting not available on the following sizes:
16" x 42", 18" x 24", 18" x 48"



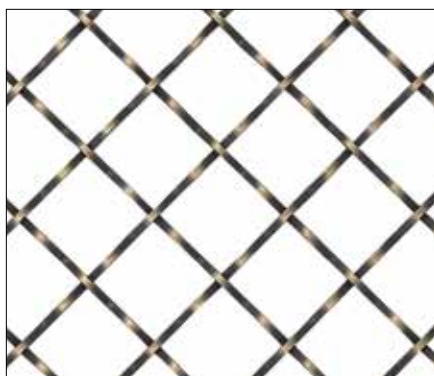
Single Crimped Square Wire
1/16" wire size,
1/2" mesh size



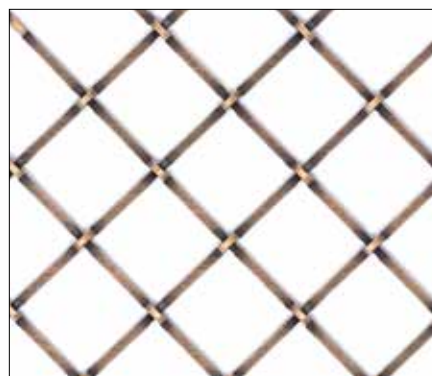
Press Crimped Square Wire
.063" wire size,
5/8" mesh size

Part #	Size
WWG-CG10-*-2	2' x 6'
WWG-CG10-*-*	3' x 4'
WWG-CG10-*-6	4' x 6'

Part #	Size
WWG-5816P-*-2	2' x 6'
WWG-5816P-*-*	3' x 4'
WWG-5816P-*-6	4' x 6'



Inter Crimped Square Wire
.063" wire size,
3/4" mesh size



Press Crimped Square Wire
.063" wire size,
3/4" mesh size

Part #	Size
WWG-316C-*-2	2' x 6'
WWG-316C-*-*	3' x 4'
WWG-316C-*-6	4' x 6'

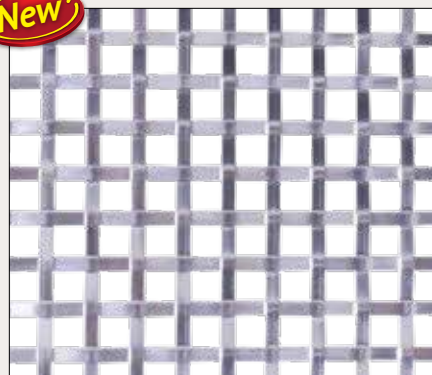
Part #	Size
WWG-316P-*-2	2' x 6'
WWG-316P-*-*	3' x 4'
WWG-316P-*-6	4' x 6'



Inter Crimped Square Wire
.063" wire size
1" mesh size

Part #	Size
WWG-116C-*-2	2' x 6'
WWG-116C-*-*	3' x 4'
WWG-116C-*-6	4' x 6'

New!



304 Stainless offers significant brilliance with a clean, clear finish. The advantage of 304 Stainless is that it is highly rust resistant in a wider variety of settings compared to our regular wire. Available only in pattern 286S and cut on the square.

Single Crimped Flat Wire
1/8" x 1/16" wire size,
3/8" mesh size

Part #	Size
WWG-286S-STNLESS	3' x 4'
WWG-286S-STNLESS-6	4' x 6'
WWG-286S-STNLESS-24	18" x 24"
WWG-286S-STNLESS-48	18" x 48"



RECYCLED STEEL

PACKING FEE (#WWG-PF)

Woven Wire Grille Binders



Complete Binder WWG-KIT

- Woven Wire Grille Collection
- Includes 43 patterns in over 30 finishes
- Each pattern and finish is represented throughout the binder
- 4" x 4" Sample pieces

WWG-10

- This binder includes 4" x 4" Sample pieces in our top ten patterns and finishes

Custom Cut Program

Outwater Plastics offers custom cut sizes as well as our standard sizes. If our 2' x 6', 3' x 4' and 4' x 6' sheets are too large for your application, let us quote it for you. We suggest measuring the routed opening that the grille will need to be placed into-deduct 1/8" for clearance.

Example: Outer edge of routed opening measures 14" x 28", your measurement should be 13-7/8" x 27-7/8".

Please note: Custom cut orders have a tolerance of 1/16"

No-Route Glass / Panel Retaining Clips

- **Color:** Brown
- Designed to attach glass or decorative panels to doors without routing
- Can be screwed or stapled into place
- Corner pieces available
- Available for 1/8" or 3/16" thick panels

Part #	Material Thickness	Type
R21-1804BR	1/8"	Corner
R21-1805BR	3/16"	Corner



Panel Retainers

Bronze Finish on Steel
Overall Size: 3/8" Wide x 1-3/16" Long
Screws Included

Screw adjustable, secure holding & quick removal of metal grilles. Reversible to accommodate varied glass thicknesses and door mortises. 7/8" vinyl tipped screw tightens and adjusts without harming glass.

SH-302

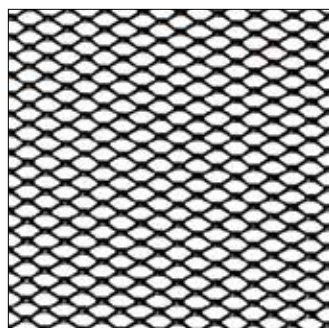


Expanded Metal Grilles

LIGHT GAUGE EXPANDED ALUMINUM 3' x 4' MESH SHEETS

EMW2

- Small leaf dense mesh for maximum concealment
- Many uses include venting, decorative applications, exterior grill-work on RV's and animal barrier screen.

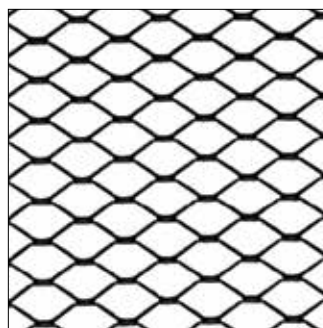


Metal Thickness: .032"
Weight/Sq. Ft.: .2219 lb.
Design Size - SWD: .215", LWD: .390"
Opening Size - SWD: .100", LWD: .390"
Strand Size - Width: .060"
Overall Thickness: .085"
Designs/Ft. - SWD: 56, LWD: 30.5
50% Open Area

Part #	Finish
EMW2-M	Mill
EMW2-BK	Black

EMW3

- Medium mesh
- Conceals well but allows increased air flow to RV furnaces and other appliances.



Metal Thickness: .032"
Weight/Sq. Ft.: .1938 lb.
Design Size - SWD: .400", LWD: .745"
Opening Size - SWD: .312", LWD: .560"
Strand Size - Width: .080"
Overall Thickness: .110"
Designs/Ft. - SWD: 30.5, LWD: 16
57% Open Area

Part #	Finish
EMW3-BK	Black

3 FT. x 4 FT. SHEETS

Outwater's stainless steel wire mesh offers endless design options for applications ranging from furniture making and ceiling tiles to infill panels and room partitions.



**8 Patterns
to choose from!**

**Made from
304 Stainless Steel**

**3 ft. x 4 ft. sheets
can easily be
shipped via UPS**

GRILLE PANEL RETAINERS

Bronze finish on Steel

- Overall Size: 3/8" wide x 1-3/16" long screws included



Screw adjustable, secure holding & quick removal of metal grilles. Reversible to accommodate varied glass thicknesses and door mortises. 7/8" vinyl tipped screw tightens and adjusts without harming glass.

Part #

SH-302

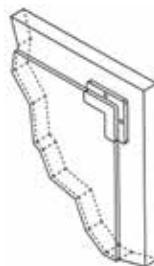


**Samples
available
upon
request**



NO-ROUTE GLASS/PANEL RETAINING CLIPS

- **Color:** Brown
- Designed to attach glass or decorative panels to doors without routing
- Can be screwed or stapled into place
- Corner pieces available
- Available for 1/8" or 3/16" thick panels



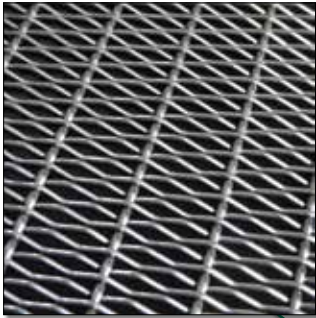
Part #	Material Thickness	Type
R21-1804BR	1/8"	Corner
R21-1805BR	3/16"	Corner

CUTTING INSTRUCTIONS:

- 1 Material can be cut using wire cutters, bolt cutters and any saw with a metal cutting blade, depending on the gauge of the wire. Each design varies with wire gauge and crimp style.
- 2 Strongly recommend that you make a template of the exact size the grilles will be cut to - heavy cardboard or scrap plywood works the best.
- 3 For smaller mesh openings (under 3/4"), plan on 1/2" spacing between any pieces they may be cutting out of standard sheet sizes. For mesh openings 3/4" and larger, plan on not less than 1" of space between each cut.

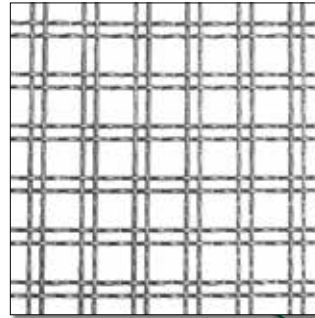
3 FT. x 4 FT. SHEETS

Larger Sheets Available Up To 4' x 8'. Minimum Order of 100 sq. ft., Please Inquire.



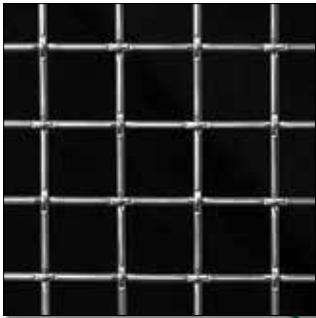
SWM-56

- Single crimp
- Round wire
- .054" wire size, .64" x .06" mesh size. (pattern runs in 4' direction)
- 52% open area.
- Weight = 13 lbs. each



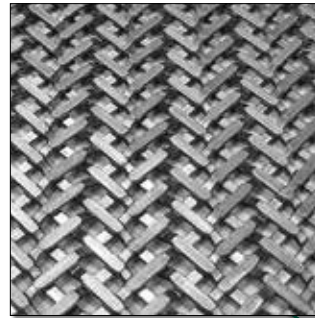
SWM-28

- Inter crimp
- Round wire
- .063" wire size, 3/8" x 1/8" mesh size.
- 66% open area.
- Weight = 9 lbs. each



SWM-236

- Press crimp
- Round wire
- .080" wire size, 3/4" mesh size.
- 82% open area.
- Weight = 6 lbs. each



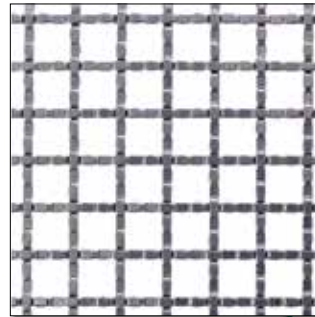
SWM-1

- Press crimp
- Flat wire
- 1/8" x 1/16" wire size, 1/8" mesh size.
- Weight = 27.25 lbs. each



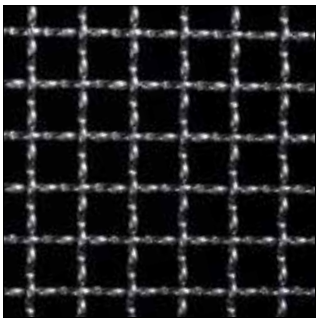
SWM-30

- Flat crimp
- Round wire
- .080" wire size, .68" x .065" mesh size. (pattern runs in 4' directions)
- 33% open area.
- Weight = 22 lbs. each



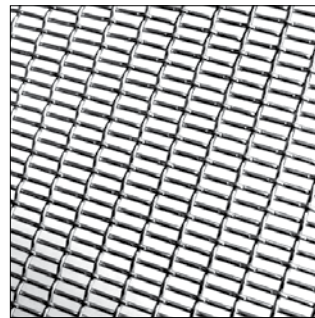
SWM-9

- Flat crimp
- Flat wire
- 1/8" x 1/16" wire size, 1/2" mesh size.
- 64% open area.
- Weight = 15 lbs. each



SWM-346

- Inter crimp
- Round wire
- .063" wire size, 17/64" mesh size.
- 66% open area.
- Weight = 9 lbs. each



SWM-46

- Press crimp
- Round wire
- .047" wire size, .35" x .06" mesh size. (pattern runs in 4' direction)
- 49% open area
- Weight = 11 lbs. each



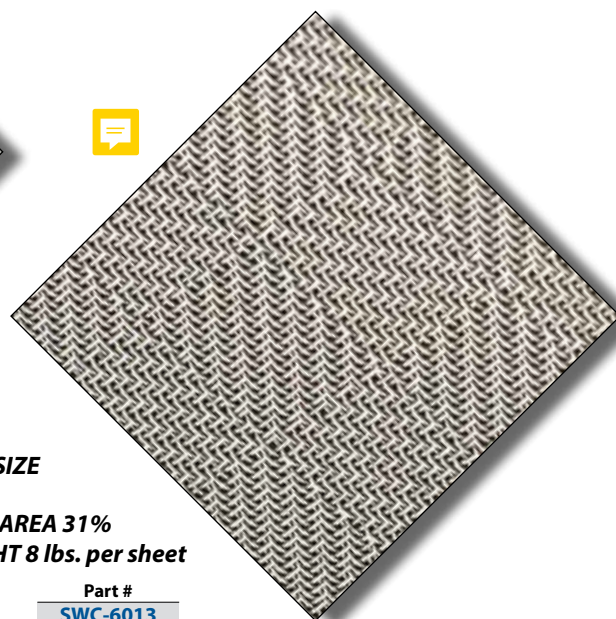
Stainless steel wire cloth provides versatility, stability, robustness and optical properties, making it an ideal material when designing spaces, surfaces and other functional elements for both internal and external applications. Uses include wall cladding and room dividers, infill panels, ceiling tiles, signage and sun protection.

- 316 Stainless Steel can be used indoors and outdoors
- Lightweight & Easily Trimmable
- Flexible enough for radius applications
- 3' x 4' sheets are easily shipped



WIRE SIZE
.006" x .007"
OPEN AREA 22%
WEIGHT 3 lbs. per sheet

Part #
SWC-6501



WIRE SIZE
.022"
OPEN AREA 31%
WEIGHT 8 lbs. per sheet

Part #
SWC-6013