



HANGING PROTECTION SYSTEMS



COUNTERTOP PROTECTION SYSTEMS

PERSONAL PROTECTIVE EQUIPMENT



PPE

BY OUTWATER INDUSTRIES



STRUCTURAL PROTECTION SYSTEMS

FACE MASKS + SHIELDS

CLIP TOGETHER PROTECTION SYSTEMS

OUTWATER NOW OFFERS ACRYLIC PANELS



- This durable acrylic sheet can be used as a desk partition or room divider
- Suitable for many different environments including schools, offices, medical facilities, waiting areas, conference rooms, cafeterias, airports, hotels, and nail salons
- Helps enforce social distancing and safety by providing a barrier between people
- Acts as a sneeze guard, eliminating contact with airborne droplets and other contaminants
- Transparent PPE barrier allows for physical separation without obstructing people's view
- Surface is easy to wipe clean and disinfect
- Made of high-quality acrylic that is non-yellowing and scratch resistant
- Radius corners have soft, smooth edges to prevent injury

3 SIZES AVAILABLE

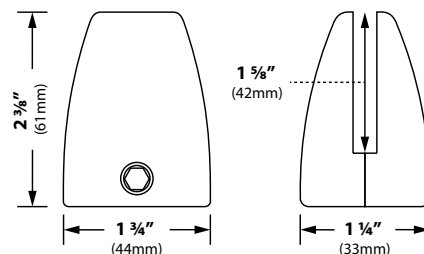
	Panel Size	Thickness
AC-24X24-1875	(24" x 24")	3/16"
AC-30X24-1875	(30" x 24")	3/16"
AC-48X24-1875	(48" x 24")	3/16"

COUNTERTOP PARTITION CLAMPS

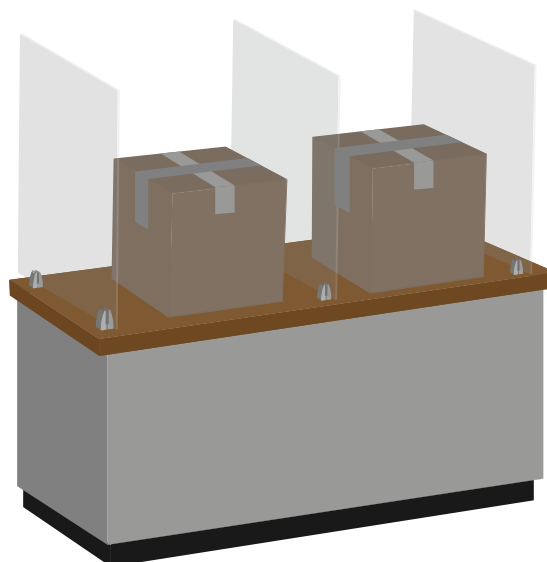
Outwater's new countertop partition clamps can be used to create screens, safety partitions, sneeze guards and more. This hardware was created to hold a range of different panel sizes and can be easily secured to your desk or countertop.

TOP MOUNT DESK PARTITION CLAMP

- Material: Aluminum (A) or Plastic (P)
- Designed to fit panels 1/16" to 1"
- Soft interior pads keep partitions from slipping or cracking
- Designed to work with wood screws to permanently attach to the bottom of a surface
- Includes two wood screws
- Available in Matte Chrome (*SIL) or Matte Black (*BK)



PDK-01A-*
PDK-01P-SIL



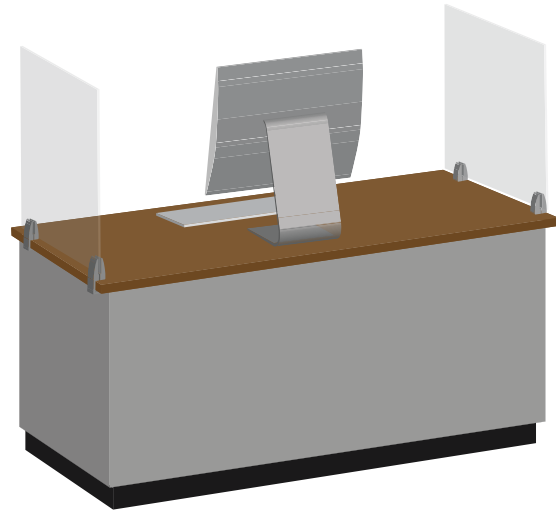
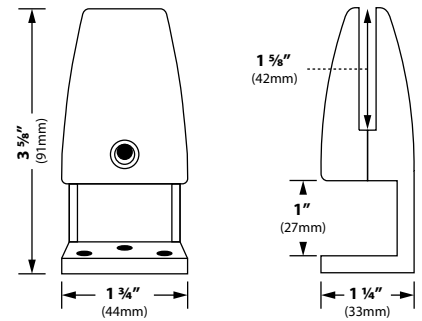
English measurements converted from metric. Metric is the most accurate.

SIDE MOUNT DESK PARTITION CLAMP

- Material: Aluminum
- Designed to fit panels 1/16" to 1"
- Soft interior pads keep partitions from slipping or cracking
- Designed to work with wood screws to permanently attach to the bottom of a surface
- Includes three wood screws
- Maximum surface thickness up to: 1-1/16"
- Available in Matte Chrome (*SIL) or Matte Black (*BK)



PDK-02-*

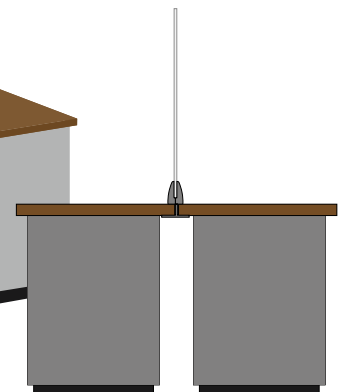
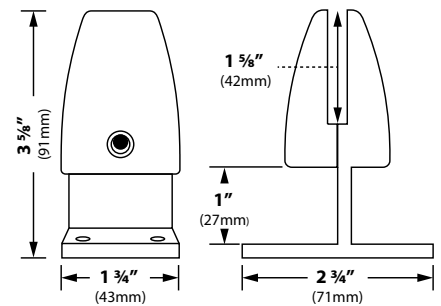


DOUBLE-SIDED DESK PARTITION CLAMP

- Material: Aluminum
- Designed to fit panels 1/16" to 1"
- Soft interior pads keep partitions from slipping or cracking
- Designed to work with double-sided workstations
- Includes four wood screws
- Maximum surface thickness up to 1-1/16"
- Available in Matte Chrome (*SIL) or Matte Black (*BK)



PDK-03-*



Side View

English measurements converted from metric. Metric is the most accurate.

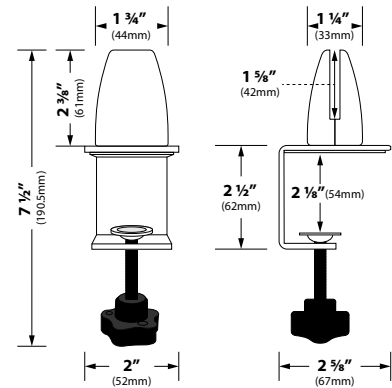
COUNTERTOP PROTECTION SYSTEMS - PARTITION CLIPS

ADJUSTABLE MOUNT DESK PARTITION CLAMP

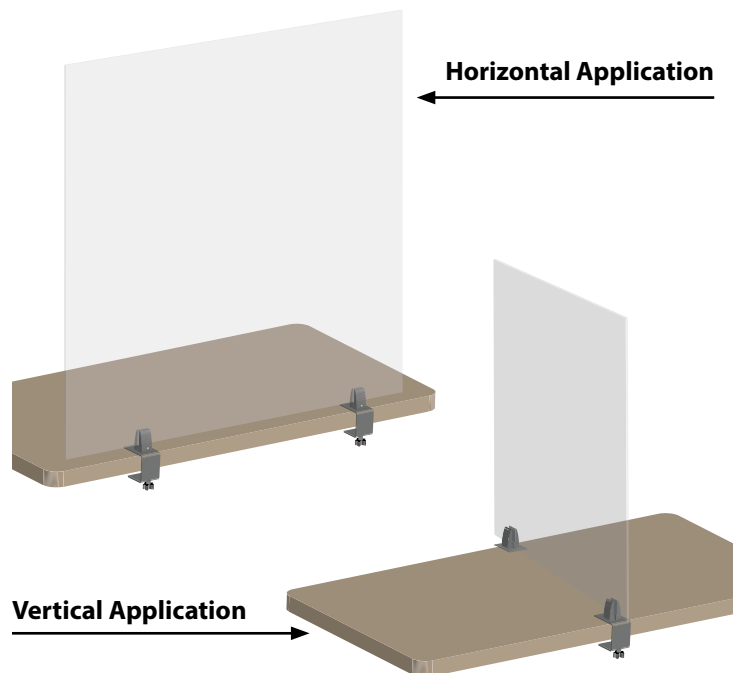
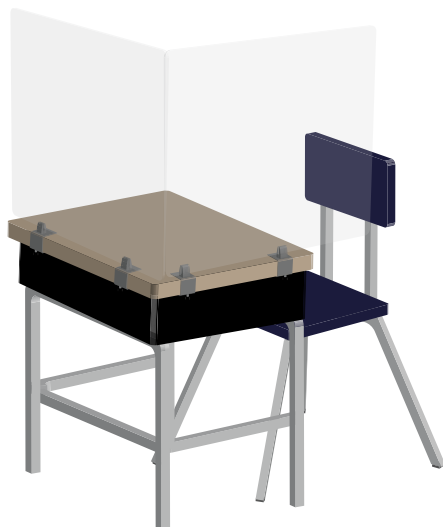
- Material: Aluminum
- Best of all worlds: Fits 1/16" to 1"
- Super strong all metal construction
- No need for tools: Turn screw clamp design eliminates the need for screwing
- Easily removed: Will not damage furniture and makes sterilizing panels a breeze
- Adjustable turn knob works with 1/2" to 1-3/4" thick desk/counter surfaces
- Available in Matte Chrome (*SIL) or Matte Black (*BK)



PDK-05-*



Ships as shown. Some assembly required.

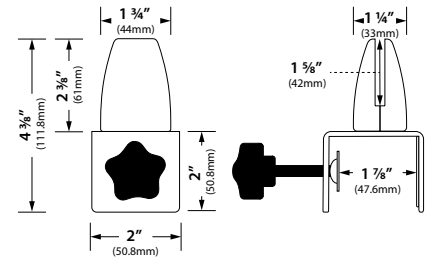


PDK-05 clamps can be mounted vertically or horizontally.

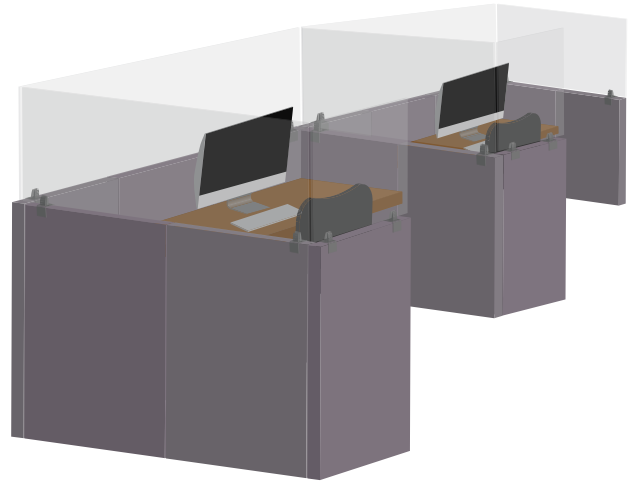
English measurements converted from metric. Metric is the most accurate.

ADJUSTABLE MOUNT CUBICLE PARTITION CLAMP

- Material: Aluminum
- Best of all worlds: Fits 1/16" to 1"
- Super strong all metal construction
- No need for tools: Turn screw clamp design eliminates the need for screwing
- Easily removed: Will not damage furniture and makes sterilizing panels a breeze
- Adjustable turn knob works with 1/2" to 1-3/4" thick desk/counter surfaces
- Available in Matte Chrome (*SIL) or Matte Black (*BK)

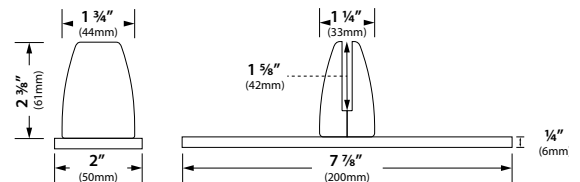


PDK-10-*



FREE STANDING DESK PARTITION CLAMP

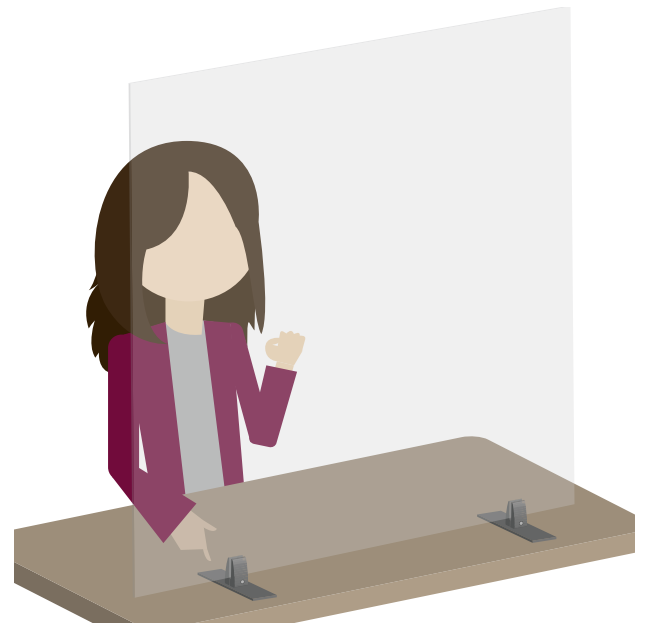
- Material: Aluminum
- Best of all worlds: Fits 1/16" to 1"
- Free-standing mount allows you to create a temporary barrier virtually anywhere
- Won't slip or slide: Non-slip pads on the bottom
- Easily removed: Will not damage furniture and makes sterilizing panels a breeze
- Available in Matte Chrome (*SIL) or Matte Black (*BK)



PDK-06-*



NON-SLIP PADS



English measurements converted from metric. Metric is the most accurate.

AT TUBING: DIY PROTECTION SCREEN SYSTEM

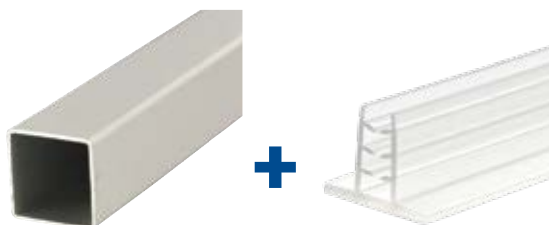
Outwater's AT Tubing system consists of a series of tubes and connectors that can be joined together to create a wide range of screens and partitions to help promote social distancing and keep your employees and patrons safe.

There are a variety of angled, multi-sided connectors that will allow you to create any type of structure you may require, such as partitions for gyms and waiting rooms, or screens for desks and service counters.

The beauty of the system is how easy it is to assemble. Using the AT Tubing systems' various components even those without prior experience can quickly fashion all types of structures simply by fitting the system's components together.

Outwater's AT Tubing system is completely toolless and available in anodized and black finishes.

CREATE YOUR OWN PARTITION SCREENS



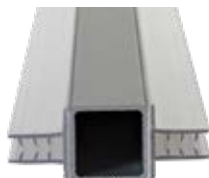
AT-2CL-8

106-4814-CL

By combining Outwater's AT Tubing and adhesive backed stabilized T-Base, you can create your own 2-Way 90°, 2-Way 180°, 3-Way, and 4-Way partitions.



2-WAY 90°



2-WAY 180°



3-WAY



4-WAY



THE FINISHING TOUCHES



F5323BK



F5323SPBK

Outwater's straight and 90° base connectors will allow your partition screen to stand freely and is light-weight allowing it to be easily moved.



DS71-325



BOLT-3125

L: 1-1/2" x 5/16-18"

AT Tubing can be secured directly to your surface using Outwater's double star insert and a hanger bolt.



SHK-32S-BK

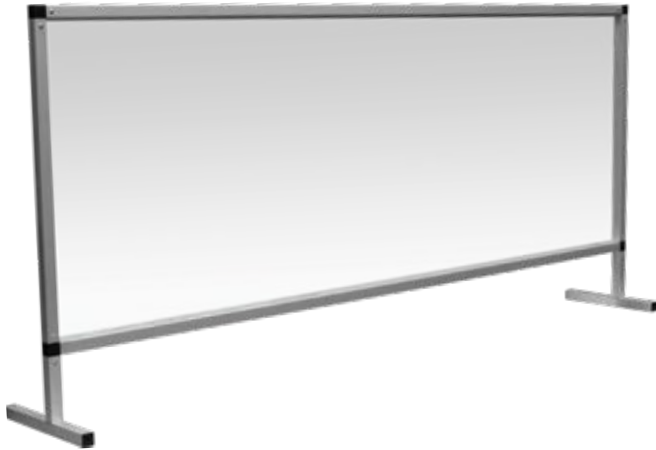


Add an end cap to give the AT Tube a clean finish.

FREE STANDING DESK SCREENS

Outwater's free standing desk screens are semi-permanent structures designed as a personal screen. The screen's stabilized feet allow them to stand on their own with no screws or adhesives required, keeping your surface in pristine condition. They are also lightweight allowing for easy transportation.

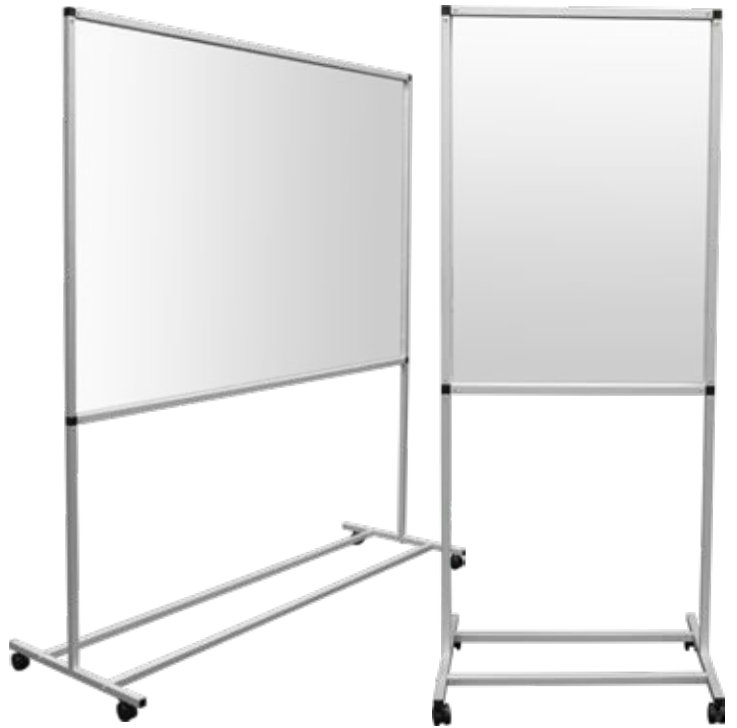
These screens are ideal for office desks, service desks, reception areas, countertops and tables.



COMPLETELY PORTABLE • LIGHTWEIGHT • NO SCREWS OR ADHESIVES



ROLLING SCREENS



GREAT FOR GYMS • BACK OFFICES • SCHOOLS • SALONS • RESTAURANTS



TUBING CONNECTORS

2-WAY RIGHT ANGLE CONNECTOR



**F521GY
F521BK**

3-WAY TEE CONNECTOR



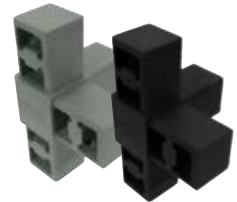
**F532GY
F532BK**

STRAIGHT BASE CONNECTOR



**F5323GY
F5323BK**

4-WAY CONNECTOR

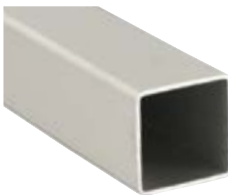


**F545GY
F545BK**

SQUARE ALUMINUM TUBING

SQUARE TUBE

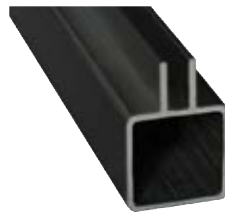
Available sizes: 3/4", 1" and 1-1/2"



**AT-2CL-8
AT-2BK-8**

SINGLE CHANNEL

Fits 7/32" Panel



**AT-6CL-8
AT-6BK-8**

DOUBLE CHANNEL

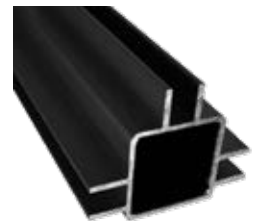
Fits 1/4" Panel



**AT-7CL-8
AT-7BK-8**

TRIPLE CHANNEL

Fits 1/4" Panel



**AT-8CL-8
AT-8BK-8**

DOUBLE CHANNEL 90°

Fits 1/8" Panel



AT-14CL-8

SINGLE CHANNEL

Fits 1/8" Panel



AT-17CL-8

TWIN WHEEL CASTERS

Casters allow for mobile partitions



HERC-7-BK-BRK



SAMS-7-BK-BRK



ACCESSORIES

DOUBLE STAR METAL TUBE CONNECTOR



DS71-325

END CAP

Gives tubing a finished look



**T32-U2-BK
T32-U2-GY
T32-U2-WH**

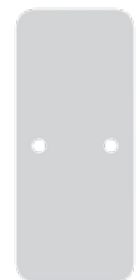
PERPENDICULAR JOINER

Self tapping screw included



**F5112MCBK
F5112MCGY**

FREE-STANDING BASE



FSB-2200B

INTRODUCING THE DECO-DEFENDER

In the midst of the COVID-19 pandemic, Outwater Industries now offers protective partitions and barriers. Perfect for restaurants, office spaces, fitness centers, and more. Keep your customers and staff safe with a stylish privacy barrier that complements and enhances the beauty of your space.

- Overall size: 60" tall x 48" wide
- Choose the insert size; 32" x 48" or 48" x 48"
- Choose the stock art from our library (outwaterphotogallery.com/laminates) or, provide your own art/logos for custom options
- Components cleanable with anti-viral/heavy duty cleaners
- Stain, fingerprint, abrasion and chemical resistant
- Lightweight and easy to move
- Made in the USA using aluminum frames and translucent FRP (.060" thickness)



Shown above: 32" x 48"



Shown above: 48" x 48"

HOW TO CHOOSE YOUR GRAPHICS

FROM OUR IDEA LIBRARY

Choose from our extensive idea library, where hundreds of images have been specifically developed to work with our products.



ASPEN



BIRCH



DUNE GRASS

OR CUSTOM GRAPHICS



One of the advantages of our services is the ability to customize the images within our idea library or you can create your own unique artwork.

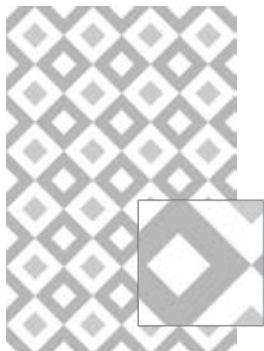
Visit outwaterphotogallery.com/laminates for our idea library



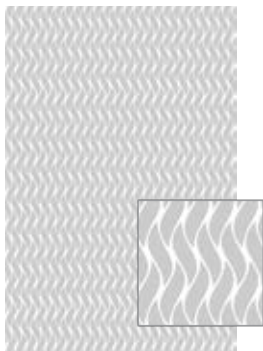
FROSTED LINE

Outwater's acrylic panels are perfect for divider panels, semi-private panels, wall panels, deco defender inserts and more. No matter how the panels are used to divide space, the collection's visual weightlessness doesn't divide attention. It's truly the icing on the cake of any room design.

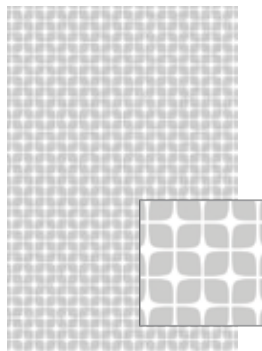
- Easy-to-install
- Cut-to-size available
- High Impact, abrasion & chemical resistant properties



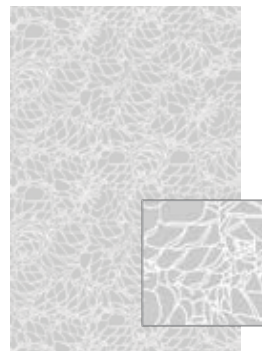
BLOCK-AID



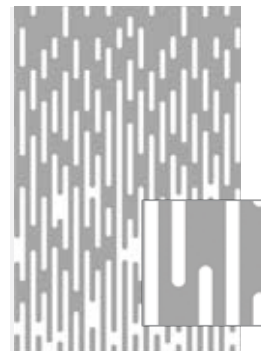
FIRESTORM



MID-CENTURY MODERN



PINE CONES



ZOOM

More patterns and styles available. Visit outwater.com for our full line of frosted acrylic panels

ACRYLIC PANELS

- Durable acrylic sheets can be used as a desk partition or room divider
- Suitable for many different environments including schools, offices, medical facilities, waiting areas, conference rooms, cafeterias, airports, hotels, and nail salons
- Helps enforce social distancing and safety by providing a barrier between people
- Acts as a sneeze guard, eliminating contact with airborne droplets and other contaminants
- Transparent PPE barrier allows for physical separation without obstructing people's view
- Surface is easy to wipe clean and disinfect
- Made of high-quality acrylic that is non-yellowing and scratch resistant
- Radius corners have soft, smooth edges to prevent injury

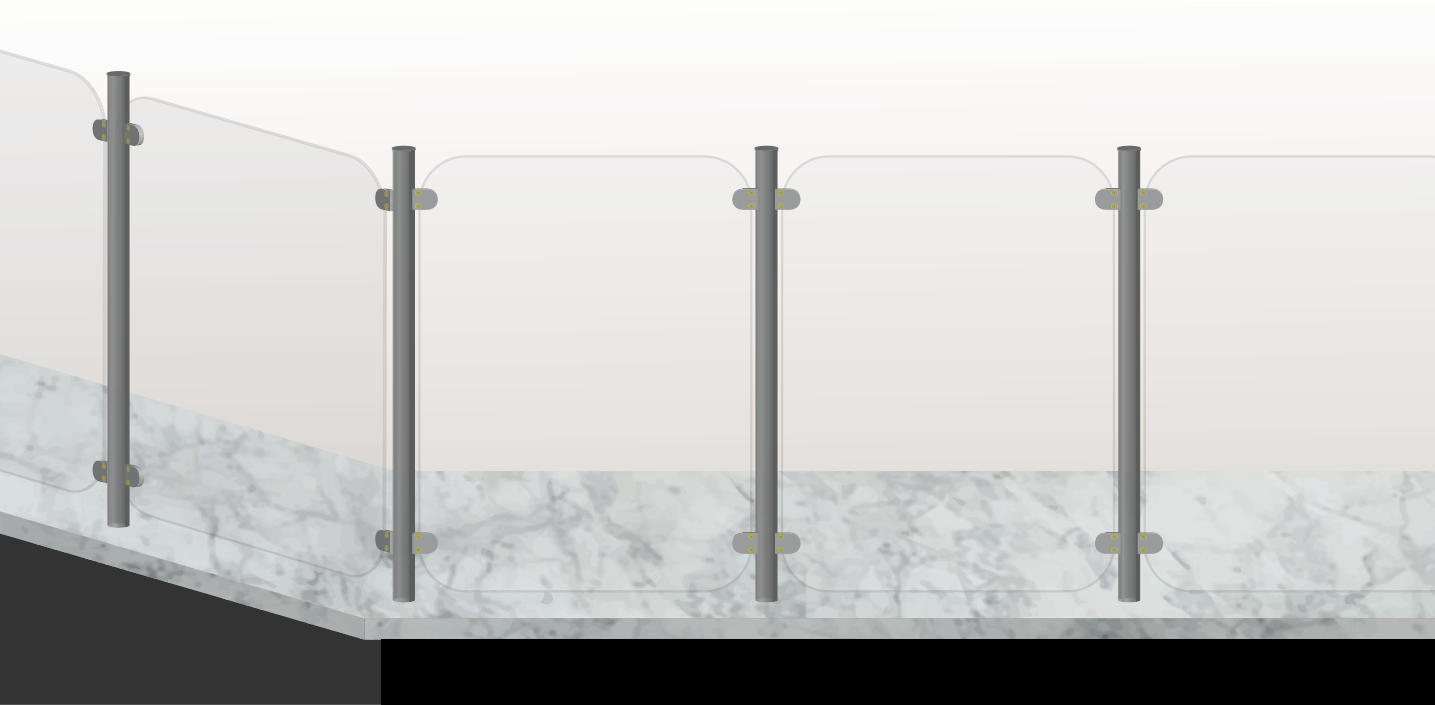


3 SIZES AVAILABLE

	Panel Size	Thickness
AC-24X24-1875	(24" x 24")	3/16"
AC-30X24-1875	(30" x 24")	3/16"
AC-48X24-1875	(48" x 24")	3/16"



STRUCTURAL PROTECTION SYSTEMS - PLEXI + GLASS CLAMPS FITS SQUARE + ROUND TUBING 1/8" UP TO 3/8" THICK



Outwater’s aluminum and stainless steel rails can be used with a variety of components to create temporary barriers, sneeze guards, partitions and more. Great for service industries such as restaurants, salons, and retail spaces.

COMPONENTS FOR 1-1/2" ALUMINUM RAILS




RAIL	CLIP	END CAP	FLANGE	INSERT	BOLT
Available in: 8 ft. lengths	Panel Thickness: 3/16" - 1/4"	Material: Textured Low Density Polyethylene	Material: Zamac	5/16-18" Thread	Hanger Bolt:
Material: Clear Anodized Aluminum	Material: Aluminum	14-23 Gauge	Hardware Included		L: 1-1/2" x 5/16-18"
SSF1-150A-SC	GC-250T-SC	C48-U2-GY	SSF1-219Z-SC	S67-485-14	BOLT-3125

COMPONENTS FOR 2" ALUMINUM TUBES

TUBE	CLIP	END CAP	BASE	INSERT	BOLT
8 ft. lengths	Panel Thickness: 3/16" - 1/4"	Material: Textured Low Density Polyethylene	Tapping screws sold separately	5/16-18" Thread	Hanger Bolt:
Material: Clear Anodized Aluminum	Material: Aluminum	14-23 Gauge			L: 1-1/2" x 5/16-18"
AT48-2CL-8	GC-250F-SC	T48-U2-GY	F485112MCGY	DS71-485	BOLT-3125

STRUCTURAL PROTECTION SYSTEMS - PLEXI + GLASS CLAMPS FITS SQUARE + ROUND TUBING 1/8" UP TO 3/8" THICK

COMPONENTS FOR 1-1/2" STAINLESS STEEL RAILS

RAIL	CLIPS		FLANGE
			
Available in: 6 ft. and 8 ft. lengths	Panel Thickness: 1/4" - 5/16"	Panel Thickness: 3/16" - 3/8"	Material: 304 Grade Stainless Steel
Material: 304 Grade Stainless Steel	Material: 304 Grade SS W: 1-1/2" x H: 1-9/16"	Material: Zamac W: 2-1/8" x H: 2-1/8"	Hardware Included
SSF1-150-SC	SSF1-618ADJ-SC	SSFZ1-618-SC	SSF1-221-SC
END CAPS		INSERT + BOLT	

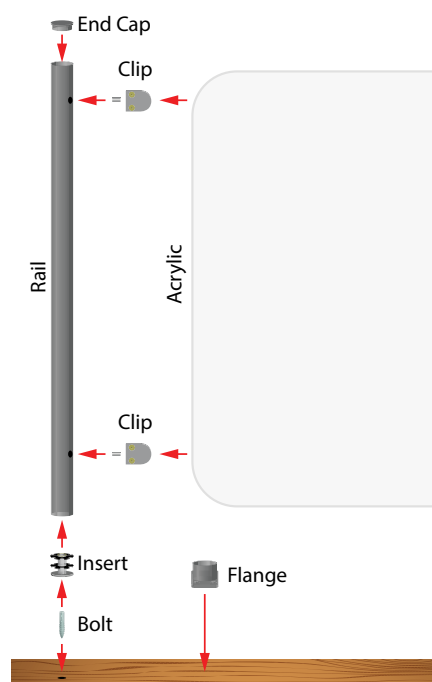
			
Flat End Cap	Domed End Cap	Material: Textured Low Density Polyethylene	Insert: 5/16-18" Thread
Material: 304 Grade Stainless Steel	Material: 304 Grade Stainless Steel	14-23 Gauge	Hanger Bolt: L: 1-1/2" x 5/16-18"
SSF1-222-SC	SSF1-223-SC	C48-U2-GY	DS72-485 BOLT-3125

COMPONENTS FOR 2" STAINLESS STEEL RAILS

RAIL	CLIPS		FLANGE
			
Available in: 6 ft. and 8 ft. lengths	Panel Thickness: 1/4" - 5/16"	Panel Thickness: 3/16" - 3/8"	Material: 304 Grade Stainless Steel
Material: 304 Grade Stainless Steel	Material: 304 Grade SS W: 1-3/4" x H: 2-7/16"	Material: Zamac W: 2-1/8" x H: 2-1/8"	Hardware Included
SSF2-200-SC	SSF2-618ADJ-SC	SSFZ2-618-SC	SSF2-221-SC
END CAPS		INSERT	BOLT

			
Flat End Cap	Domed End Cap	5/16-18" Thread	Hanger Bolt: L: 1-1/2" x 5/16-18"
Material: 304 Grade Stainless Steel	Material: 304 Grade Stainless Steel		
SSF2-222-SC	SSF2-223-SC	DS72-645	BOLT-3125

TYPICAL ASSEMBLY



The above illustration depicts the typical way that these components fit together to create a standard sneeze guard partition.

Note that a flange can be used in lieu of the insert and bolt combination to provide a finished appearance.

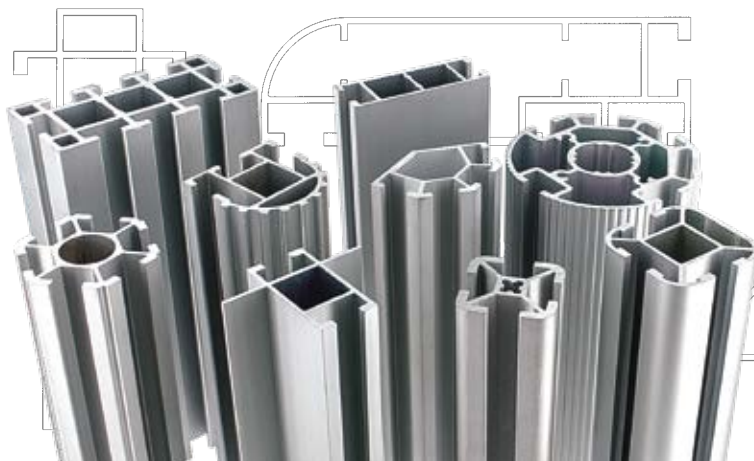
*** FIT 1/8" MATERIAL
WITH OUR NON-SKID PADS**



Our partition clips are designed to work with the sizes indicated. 1/8" panels can be used if our adhesive-backed non-skid pads are applied to both parts of the clip.

NS-3232-4

INTRODUCING FOGA® FOR PPE



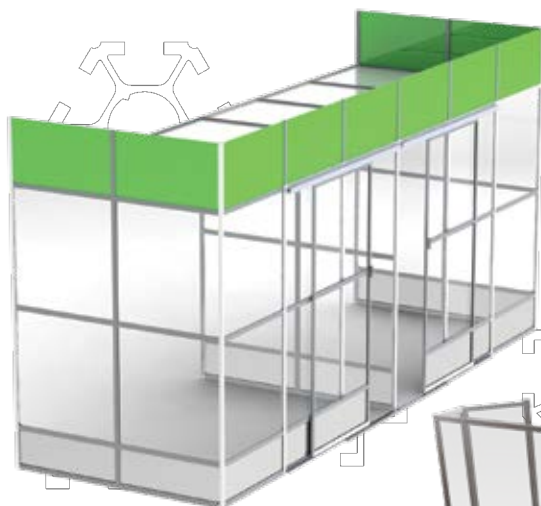
OVER
100
PROFILES



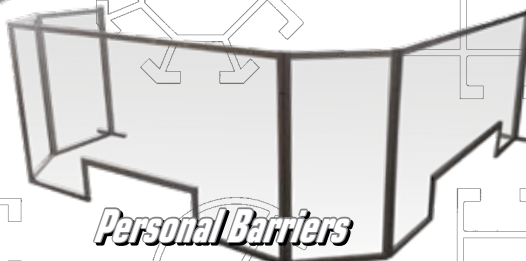
The FOGA® system allows you to create sneeze guards, protection screens, and large scale social distancing barriers and shields to keep you and your customers safe. This PPE framing system does not require any mitring and works with acrylic sheets ranging from 1/16" to 3/8" thick. The patented connectors and channels in the FOGA® system can be installed with a single hex key and the anodized aluminum finish is easy to clean in any situation.



PERMANENT STRUCTURES



Clean Room



Personal Barriers

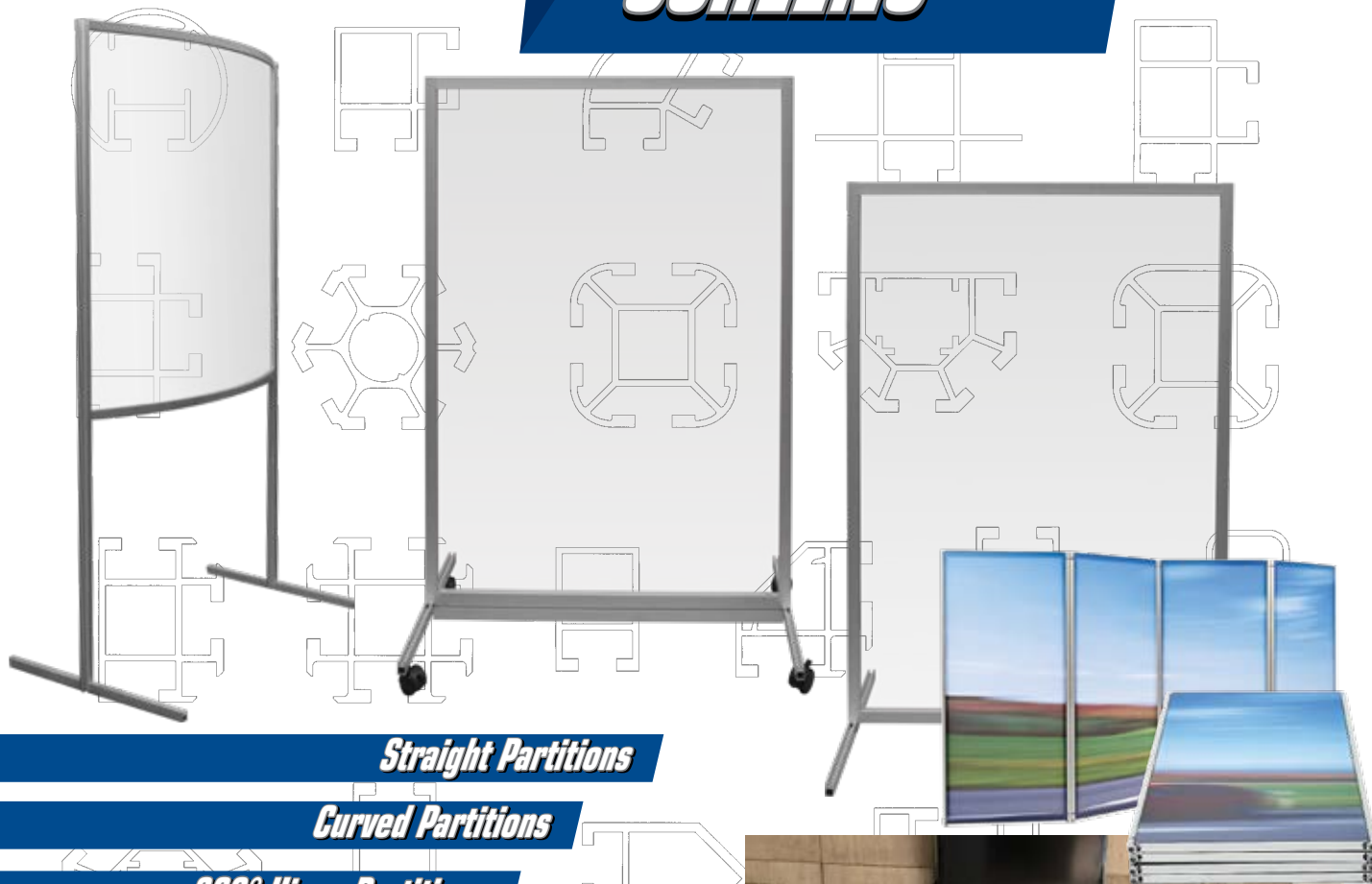


Temperature Screening Booth

We Can Help You Fabricate Your Custom Design.

WHAT CAN WE DESIGN FOR YOU? CALL US FOR CONSULTATIONS, QUESTIONS, AND QUOTES.

PORTABLE SCREENS



Straight Partitions

Curved Partitions

360° Hinge Partitions

Ideal for:

- ***OFFICES***
- ***CLASSROOMS***
- ***RECEPTION AREAS***
- ***RETAIL SPACES***
- ***SALONS***
- ***FOOD SERVICE***

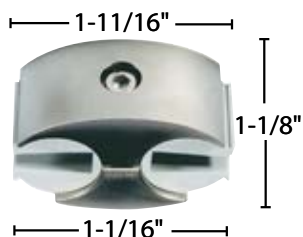


We Can Help You Fabricate Your Custom Design.

WHAT CAN WE DESIGN FOR YOU? CALL US FOR CONSULTATIONS, QUESTIONS, AND QUOTES.

MINI klem®

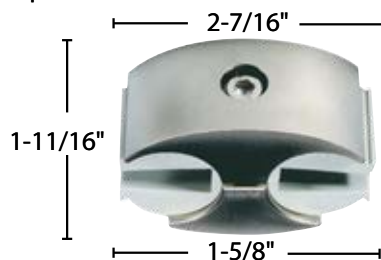
For panel thicknesses from 1/8" to 5/16"



Ideal for counter-tops, desks, checkout stations, and MORE!

SUPER klem®

For panel thicknesses from 1/4" to 3/4"



Ideal for dividers, screen panels, partitions, and MORE!

- Ideal for straight or curved walls, prisms, squares cubes, pyramids, domes or any type of display!
- Made of nickel plated zinc alloy and synthetic rubber inserts. The KLEM® connector provides great strength and long term durability.
- Standard gap between panels
Mini: 1/2"
Super: 3/4"
- To Close gap between panels, Notch the panels
Mini: 1/4" x 15/16"
Super: 5/16" x 1-3/8"

KLEM® IS RE-USABLE

MODIFY YOUR DESIGNS WITHOUT WORRIES. SIMPLY PURCHASE ADDITIONAL INSERTS TO ACCOMMODATE YOUR NEW MATERIALS.

MANY CONNECTION OPTIONS



TUBE TO TUBE



TUBE TO PANEL



3-WAY PANEL



4-WAY PANEL



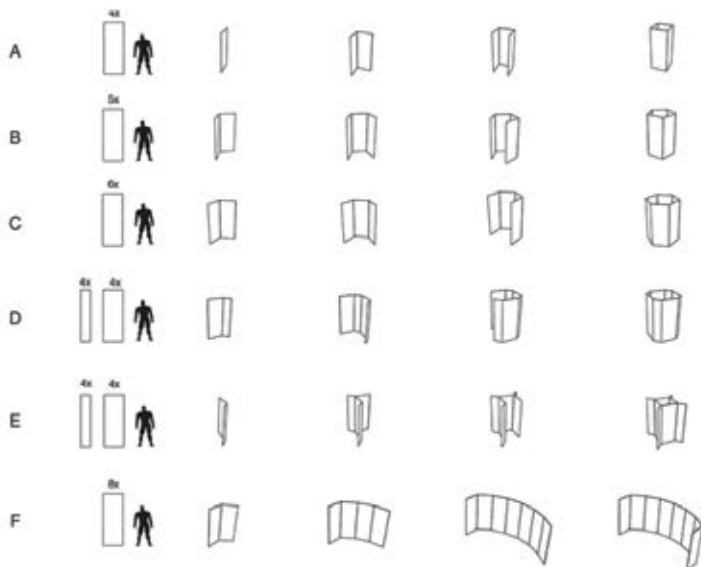
CASTER



LEVELING FOOT



WALL MOUNT

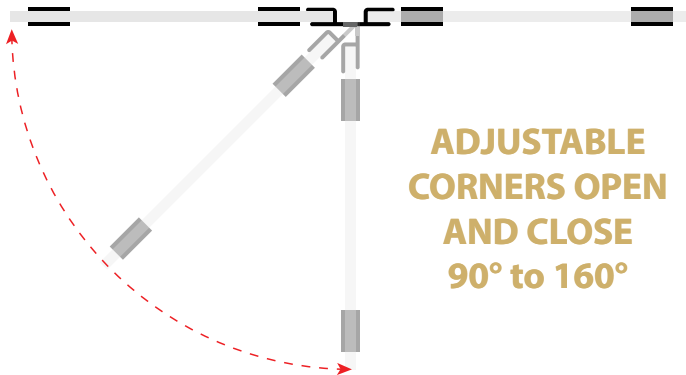


OTHER OPTIONS + ACCESSORIES



Outwater Industries keeps a collection of products in stock to fulfill any of your PPE needs, including our Clip Together Protection Systems. These products can be easily used to create protection screens, partitions, and sneeze guards for schools and business. We offer versatile adjustable corners as well as metal and plastic panel connectors, a plastic stabilized T-Base, and partition extrusions.

THE OUTWATER ADVANTAGE

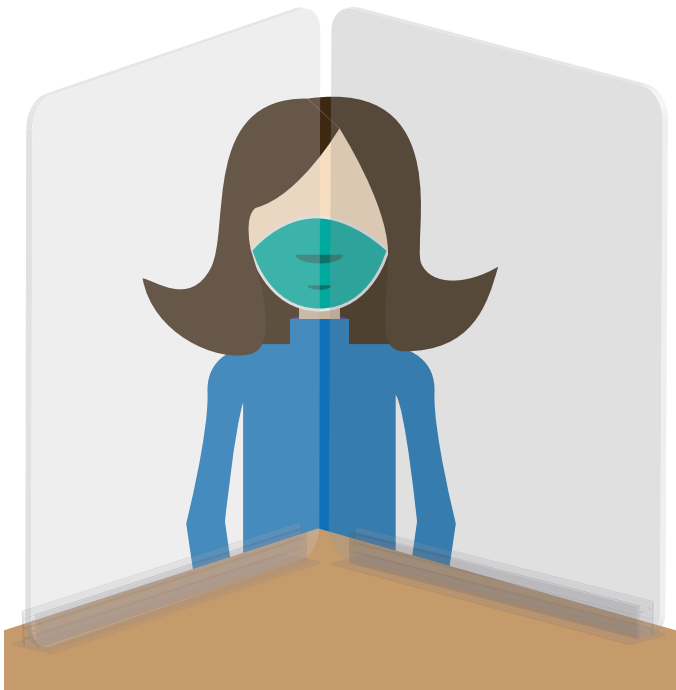


Our adjustable corners can be used to connect multiple panels and can create angles from 90 up to 160 degrees. Outwater's exclusive dual durometer technology features soft ribs inside to grip the panels snugly without adhesives or screws and fits larger panels.



Outwater's adhesive backed partition extrusions offer a strong bond to the surface they are adhered to while not damaging the surface. The adhesive residue can be easily removed with household cleaning solutions.

COMPLETE PROTECTION. NO GAPS = NO GERMS.



Gaps between acrylic panels allow harmful germs to pass through.



Outwater's adjustable corners seal these gaps ensuring you are completely protected.

COUNTERTOP PROTECTION KITS

Outwater Industries has developed four countertop protection kits to help foster social distancing and protect work or office spaces without obstructing view. Included are polished acrylic panels with rounded corners to prevent injuries, as well as our adhesive-backed T-Base to firmly hold the panels and adhere to the surface without tools. Easy to remove and sterilize, these kits are perfect for desks, reception areas and more.

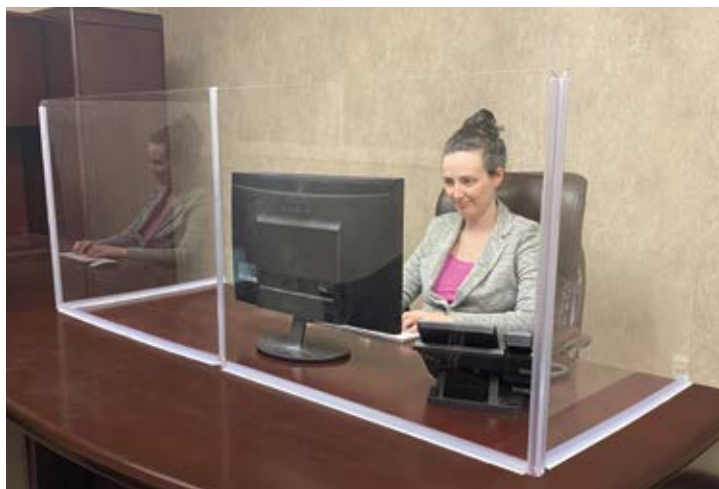


RIGID L-SHAPE

KIT INCLUDES:

- 2 Rounded and polished acrylic panels
- 1 Full-length corner channel
- 2 Stabilized adhesive-backed T-Bases

LDP-30X24X24-1875S



RIGID DOUBLE L-SHAPE

KIT INCLUDES:

- 4 Rounded and polished acrylic panels
- 2 Full-length corner channel
- 6 Stabilized adhesive-backed T-Bases
- 1 Divider Moulding

LDP-60X24X24-1875M

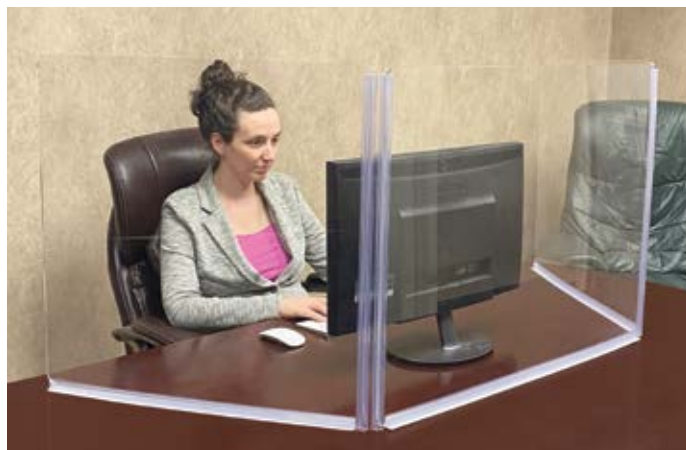


RIGID U-SHAPE

KIT INCLUDES:

- 3 Rounded and polished acrylic panels
- 2 Full-length corner channel
- 5 Stabilized adhesive-backed T-Bases

DK-1875RC (Four Sizes Available)



Adjustable corners open and close 90° to 180°

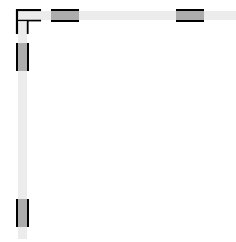
ADJUSTABLE U-SHAPE

KIT INCLUDES:

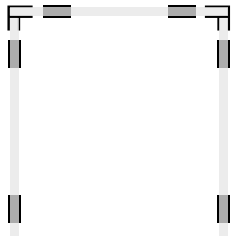
- 3 Rounded and polished acrylic panels
- 2 Full-length adjustable corners
- 2 Stabilized adhesive-backed T-Bases

DK-1875FC (Four Sizes Available)

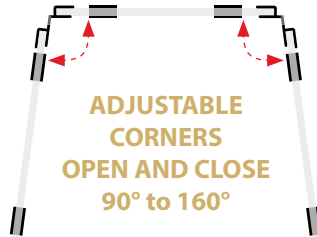
CONFIGURATIONS FOR 1/8" PANELS



ONE 2-WAY CORNER



TWO 2-WAY CORNERS



ADJUSTABLE CORNER

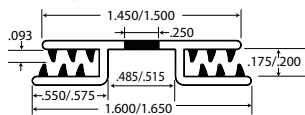


PARTITION EXTRUSIONS FOR 1/8" THICK PANELS

COLOR



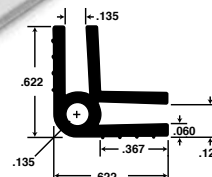
FITS 1/8"



108-640-* (Adjustable)



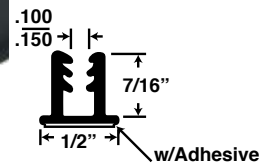
FITS 1/8"



184-*



FITS 1/8"

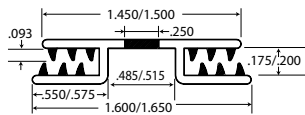


106-4808-*
106-4808-*-3 (3 in. Length)

CLEAR



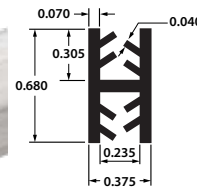
FITS 1/8"



108-640-CL (Adjustable)



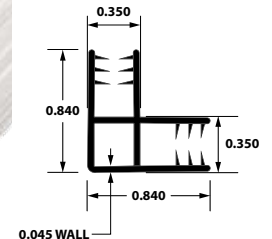
FITS 1/8"



106-4823-CL



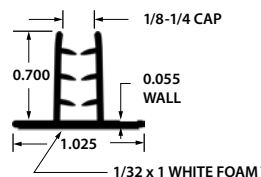
FITS 1/8"



106-4830-CL



FITS 1/8"



GTS-140-3 (3 in. Length)
GTS-140-6 (6 in. Length)
106-4814-CL (8 ft. Length)

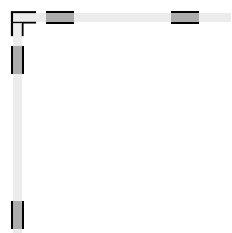
ACRYLIC PANELS AVAILABLE



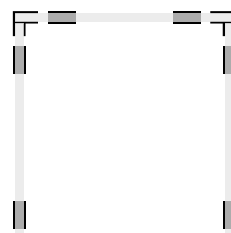
See Pages
2 or 11
for details.

CLIP TOGETHER PROTECTION SYSTEMS - PARTITION EXTRUSIONS

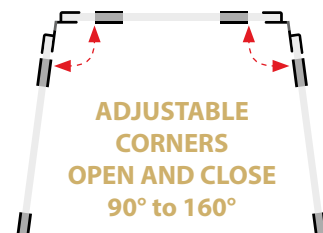
**CONFIGURATIONS
FOR 3/16" + 1/4"
PANELS**



ONE 2-WAY CORNER



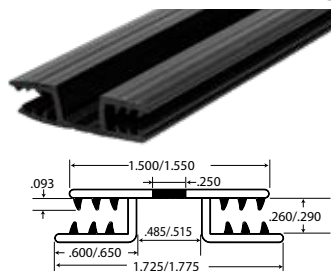
TWO 2-WAY CORNERS



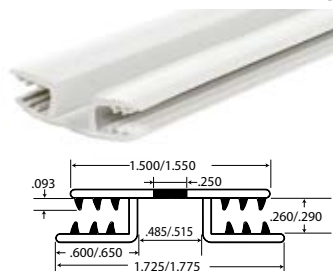
**ADJUSTABLE
CORNERS
OPEN AND CLOSE
90° to 160°
ADJUSTABLE CORNER**

PARTITION EXTRUSIONS FOR 3/16" THICK PANELS

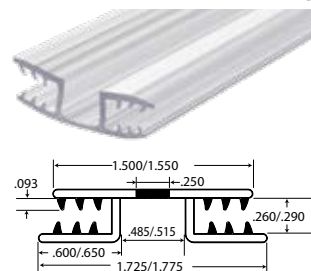
ADJUSTABLE



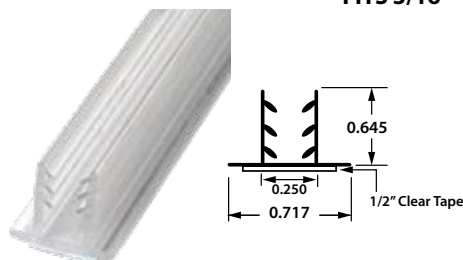
108-641-BK



108-641-WH



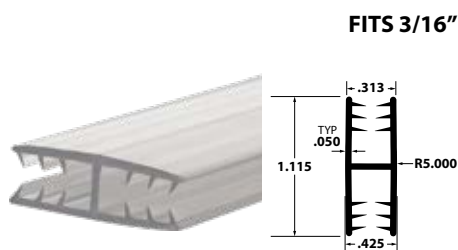
108-641-CL



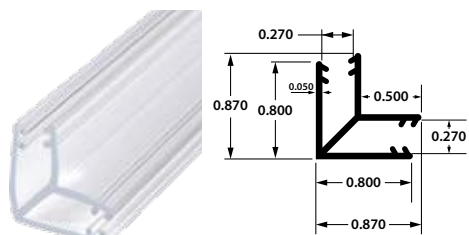
106-4820-CL



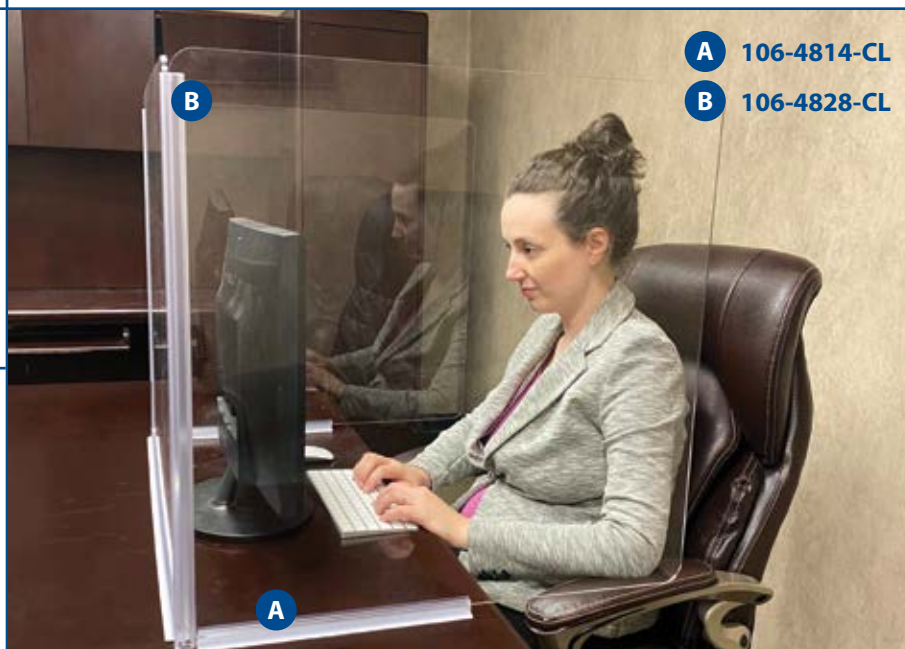
GTS-140-3 (3 in. Length)
GTS-140-6 (6 in. Length)
106-4814-CL (8 ft. Length)



106-4840-CL

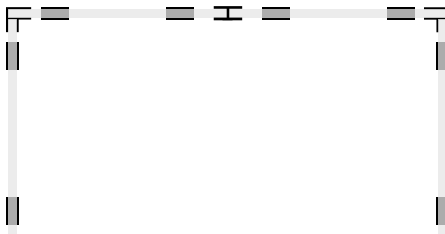


106-4828-CL

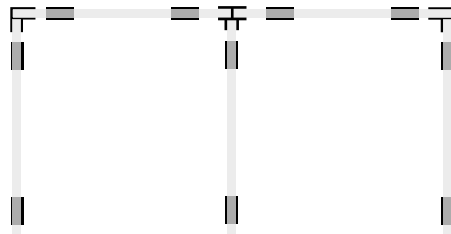


Our 106-4814-CL Stabilized T-Base is so strong, you can achieve an overhang which increases the protective area of a partition.

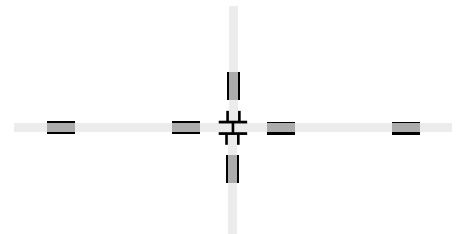
CLIP TOGETHER PROTECTION SYSTEMS - PARTITION EXTRUSIONS



TWO 2-WAY CORNERS WITH JOINER



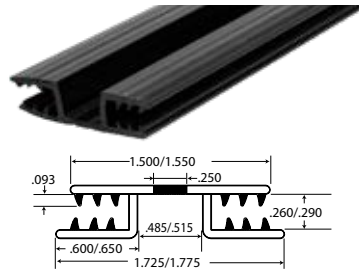
3-WAY CORNER (1/4" only)



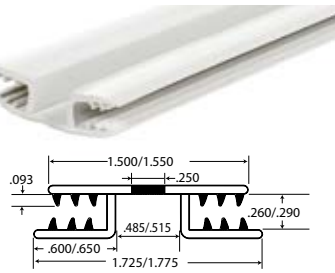
4-WAY DIVIDER (1/4" only)

PARTITION EXTRUSIONS FOR 1/4" THICK PANELS

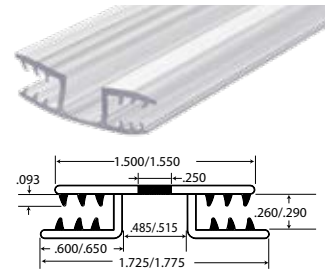
ADJUSTABLE



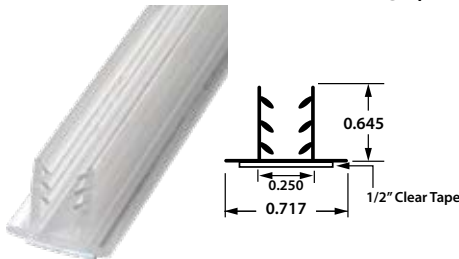
108-641-BK



108-641-WH



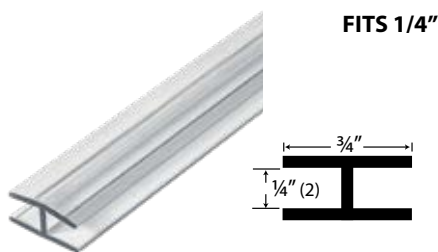
108-641-CL



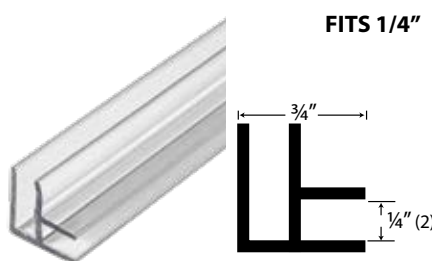
106-4820-CL



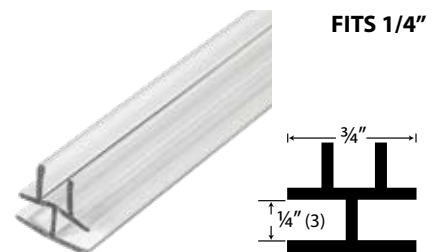
GTS-140-3 (3 in. Length)
GTS-140-6 (6 in. Length)
106-4814-CL (8 ft. Length)



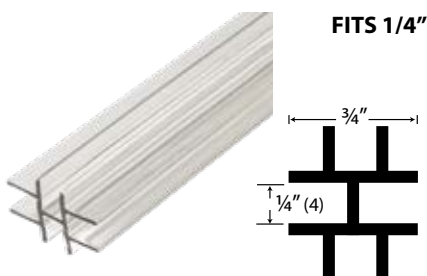
P2658



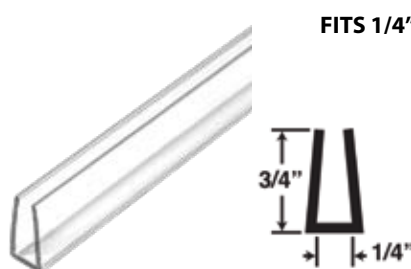
P2718



P2719



P2720

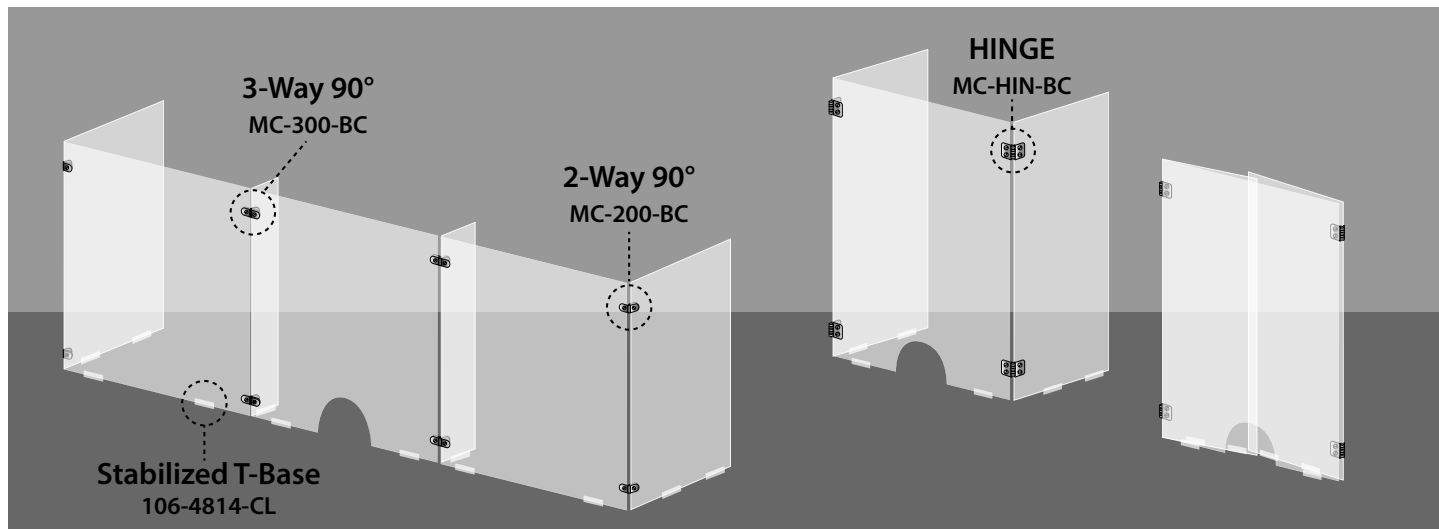


P2743

ACRYLIC PANELS AVAILABLE

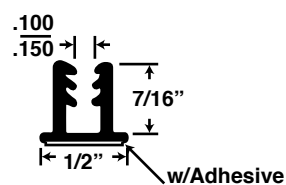
See Pages
2 or 11
for details.

CLIP TOGETHER PROTECTION SYSTEMS - PANEL CONNECTING CLIPS

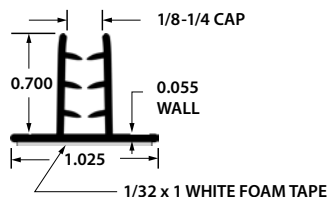


STABILIZED T-BASE

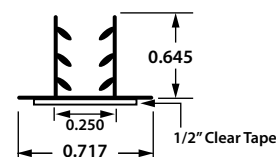
The panel connector clips included in this collection are available as 2-Way, 3-Way, 4-way, and as a hinge that will fit glass or plastic panels up to 3/16" or less. These clips will easily connect multiple panels and the hinge can be used to flare panels out and create more space.



106-4808-BK (Black)
106-4808-WH (White)



106-4814-CL (Clear)



106-4820-CL (Clear)

METAL PANEL CONNECTING CLIPS + HINGES

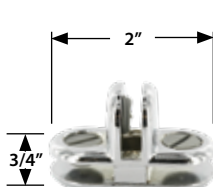
- Finish: Bright Chrome
- Nylon screws will not crack or mar material

2-WAY 90°



MC-200-BC

3-WAY 90°



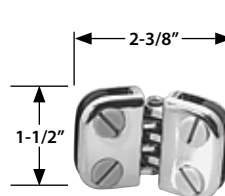
MC-300-BC

4-WAY 90°



MC-400-BC

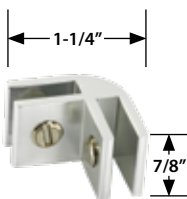
HINGE



MC-HIN-BC

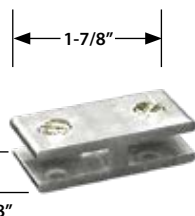
- Finish: Chrome
- Screws included

2-WAY 90°



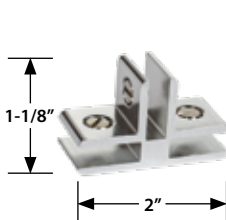
206-CHR

2-WAY 180°



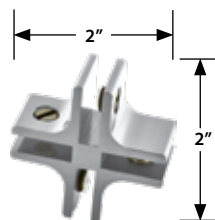
206S-CHR

3-WAY T



306T-CHR

4-WAY

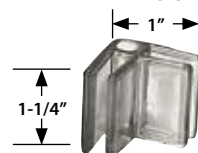


406-CHR

CLEAR PANEL CONNECTING CLIPS

- Fits 3/16" Panels
- Material: Clear Lexan

2-WAY 90°



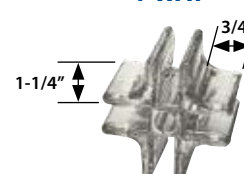
CM200

3-WAY



CM300

4-WAY



CM400

1/8" - 3/16" PANELS

3/16" - 1/4" PANELS

NO-DRILL SLOTTED STANDOFFS

- Material: Solid Brass or Aluminum
- Finishes: Matte Chrome (MC) or Polished Chrome (PC)
- Can be mounted vertically or horizontally
- No drilling required
- 2.5mm Hex Key included (**One per order**)
- 1-1/2" L x 5/16" Hanger Bolt included
- Maximum Load Rating: 17 lbs.

Panel Thickness: 1/4"



STD-SL14-MC
STDA-SL14-MC

Panel Thickness: 3/8"



STD-SL38-MC
STDA-SL38-MC

Panel Thickness: 1/2"



STD-SL12-MC
STDA-SL12-MC



STD-SL14-MC
STDA-SL14-MC



STD-SL38-MC
STDA-SL38-MC



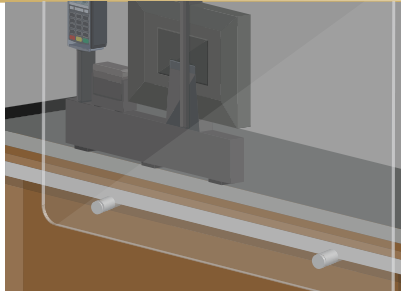
STD-SL12-MC
STDA-SL12-MC



UNDER MOUNT STANDOFF



STDA-UM250-SC



CEILING CLIPS

METAL TWIST
CEILING LOOP CLIP



CH-7021

STANDARD
PEAR CLIP

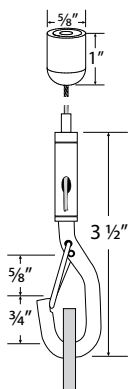


PC-1

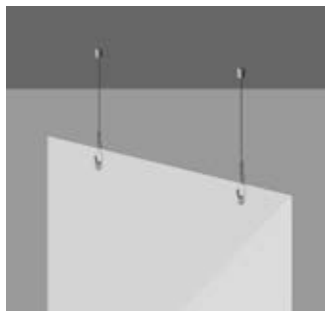
CABLE HANGING SYSTEM

LOCKING ADJUSTABLE CABLE
HOOK KIT WITH TOP FITTING

- Material: Galvanized Steel Cable with Polished Chrome Steel Hook & Top Fitting
- Wire Gauge: 1.5mm

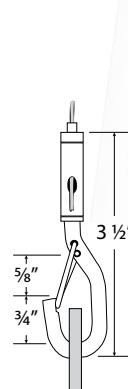


FWH-8-PC
FWH-15-PC



LOCKING ADJUSTABLE CABLE
HOOK KIT WITH 2" LOOP END

- Material: Galvanized Steel Cable & Loop with Chrome Plated Steel Hook
- Wire Gauge: 1.5mm



GSH-8
GSH-15



FACE MASKS + SNEEZE GUARDS

UNIVERSAL FACE SHIELDS

- 100% transparent
- Lightweight
- Comfortable to wear
- Fit for all head sizes
- 180° full face protection
- Anti-Fog on double sides
- Thick foam strip
- Glasses/Goggles friendly
- Reusable after cleaning
- Rounded edges



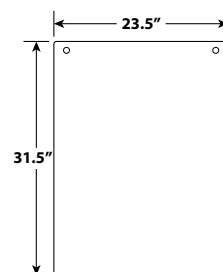
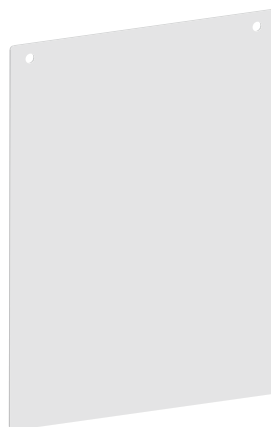
50 PACK
TFS-A-50

150 PACK
TFS-A-150



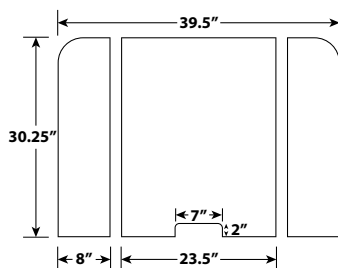
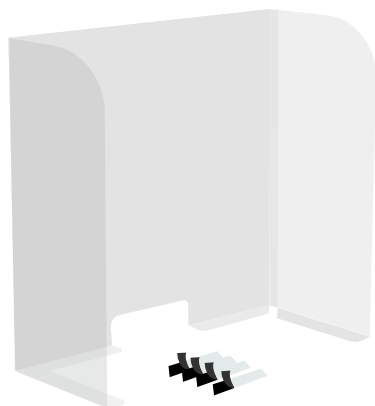
HANGING SNEEZE GUARD

- Material: Acrylic
- Easy to install
- Easy to clean and disinfect
- Ideal for grocery stores, convenience stores, retail stores, and coffee shops
- Mounting cable included
- Ships flat

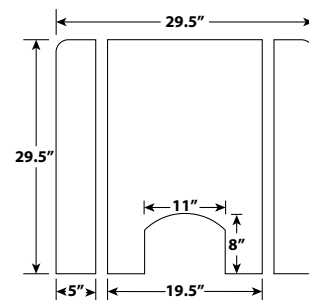
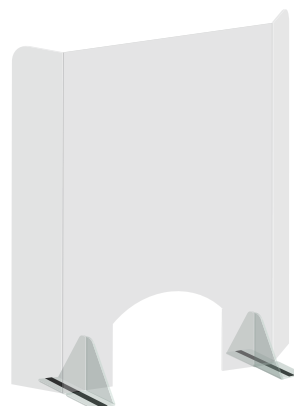


TFS-2432-H

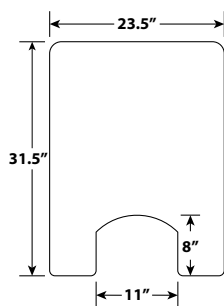
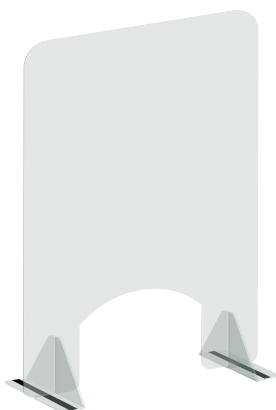
COUNTERTOP SNEEZE GUARDS



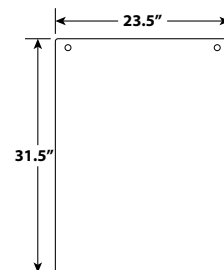
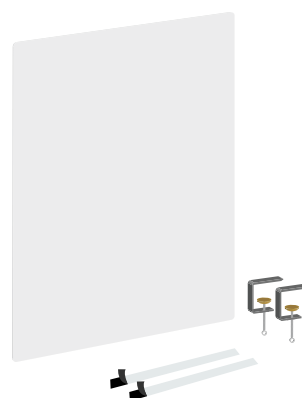
TFS-2432-HD



TFS-2030-W



TFS-2432-S



TFS-2432-C

WEST COAST

4270 West Van Buren Street
Phoenix, AZ 85043



www.outwater.com

EAST COAST

24 River Road
Bogota, NJ 07603