

COMBINATION FIXTURE - 3637-90R&L-LR

Item: _____



Unit may be pictured with some optional features.



WARNING: Cancer and Reproductive Harm
- www.P65Warnings.ca.gov.

► DESCRIPTION

This Combination Lavatory/Toilet Fixture is designed for areas without an accessible pipe chase. Fixtures are fabricated using heavy gauge type 304 stainless steel, welded to form a vandal resistant unit. Internal piping is stainless steel. Exposed surfaces are polished to a satin finish, except for the integral seat which is polished to a bright finish.

► PERFORMANCE STANDARDS

Metcraft's standard toilet is a 1.6 gpf (6.0 lpf) fixture with a 3" (76mm) waste outlet. Metcraft offers a "High Efficiency Toilet" (HET) 1.28 gpf (4.8 lpf) with a 2 3/8" (60mm) waste outlet as an option. Metcraft bowls and assemblies are designed to withstand 5000 lb. (22kN) loading without permanent deflection and damage. This fixture meets or exceeds ASME A112.19.3 / CSA B45.4 standards for "Stainless Steel Plumbing Fixtures". The trap will pass a 2 1/8" (54mm) dia. ball. A minimum 1" (25mm) supply providing 35psi (241kPa) flushing pressure is required.

Listed by



Fixture designed to reduce possible
ligature points. Not a substitute
for professional supervision."

► INSTALLATION

These fixtures are secured to the wall from the fixture (cell) side using a eight point anchor system. Eight bolts screw into expansion sheilds in the wall (Expansion sheilds are not included). The installer must provide wall openings for piping per rough-in drawings provided by Metcraft. Valves are installed inside the fixture.

Plumbing connections and service are performed through access panels on the sides of the fixture and a sink enclosure beneath the sink. Access panels are secured in place with vandal resistant fasteners provided by Metcraft. Fixture meets A.D.A. requirements when installed per A.D.A. guidelines.

Water Consumption:

With a low consumption flush valve - 1.6 gpf (6 liters)

With a HET consumption flush valve - 1.28 gpf (4.8 liters)

RECOMMENDED FLUSH VALVES

	SLOAN	ZURN	DELANY
Low consumption	950-MBPM-1.6	ZH6150-MBPM-1.6	1234-1.6
HET	950-MBPM-1.28	ZH6150-MBPM-1.28	

OUTLET/MOUNTING

- ☐ **FW** On the floor, wall outlet (Standard).
☐ **FF** On the floor, floor outlet.

SPOUT

- ☐ **B1H** Suicide Resistant Filler Spout. (Standard)

HAND BASINS

- ☐ **RB** Rectangular Basin. (Standard)

LAVATORY WASTE

- ☐ **SJP** Slip Joint P-Trap. (Standard)
☐ **CWO** Combined Waste.

TOILET WASTE

- ☐ **GW** Gasket Waste Outlet. (Standard)
☐ **PE** Plain End Waste - 2" into fixture.

Product Options

- ☐ **AFH** Hydraulic Anti-Flood Valve.
☐ **MS** Mirror Finish Toilet Seat. (Standard)
☐ **HT** Towel Hook.
☐ **PH** Recessed Tissue Holder.
Not ADA Compliant on this Fixture.
☐ **OF** Overflow Vent.

OPTIONS/ACCESSORIES

- ☐ **A550LR** 24" Wall Grab Bar w/ Closure Plate.
☐ **A551LR** 36" Wall Grab Bar w/ Closure Plate.
☐ **A552LR** 42" Wall Grab Bar w/ Closure Plate.
☐ **A553LR** 48" Wall Grab Bar w/ Closure Plate.
☐ **A554LR** 18" Wall Grab Bar w/ Closure Plate.
☐ **A557LR** Fixture Grab Bar w/ Closure Plate.
☐ **TSC** Toilet Seat Cover (Protects During Install)

PNEUMATIC VALVE ASSEMBLIES (0.5 GPM Flow Valves)

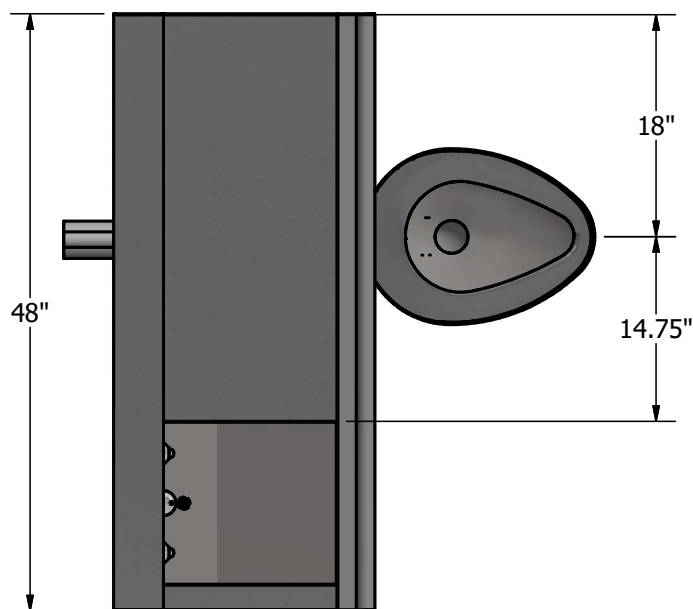
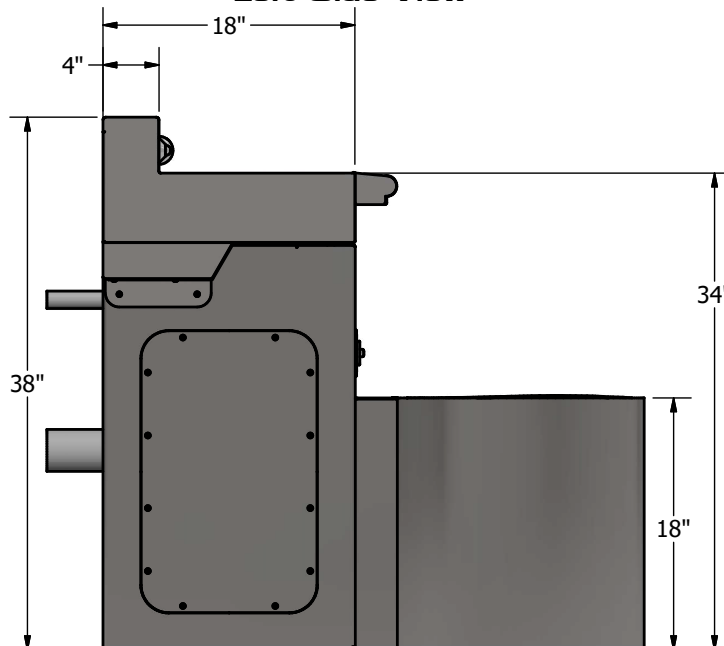
- ☐ **A311** Single Temperature, Single Fixture Valve.
☐ **A312** Dual Temperature, Single Fixture Valve.

WALL MOUNTED TOILET PAPER HOLDERS (ADA Compliant)

- ☐ **A720** Chase Mounted Recessed Toilet Paper Holder.
☐ **A721** Front Mounted Recessed Toilet Paper Holder.
☐ **A722** Ligature Resistant Front Mounted Recessed Toilet Paper Holder.

COMBINATION FIXTURE - 3637-90R&L-LR

Item: _____

Top View

Left Side View


Due to continuous product improvement Metcraft reserves the right to make changes in design and specifications without prior notice. All dimensions should be verified with the factory for current information.

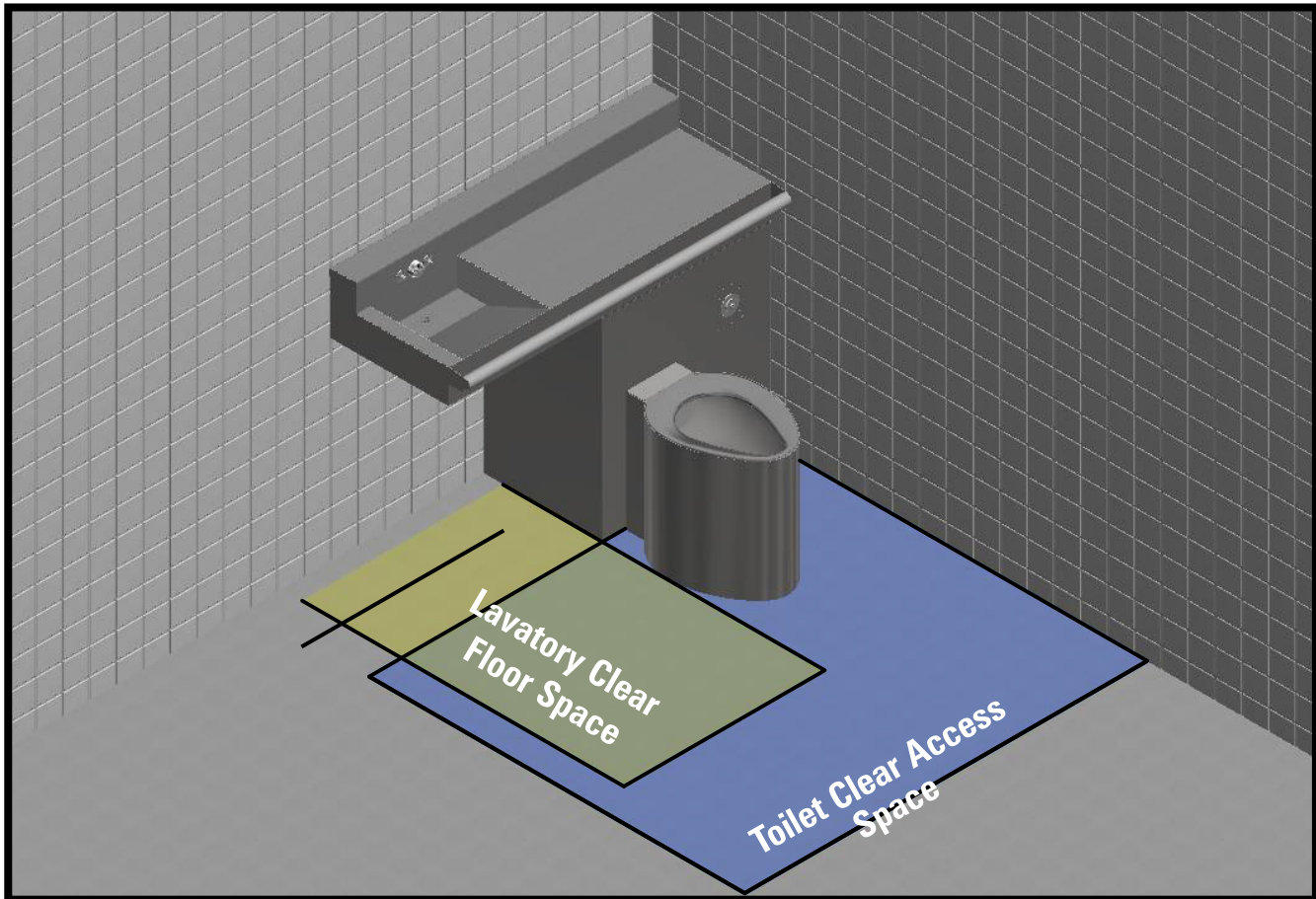
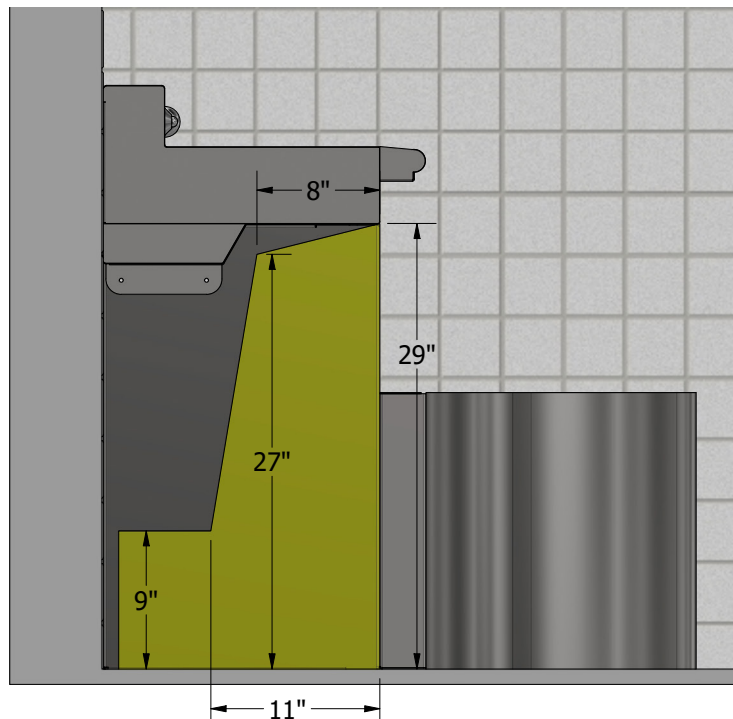
**APPROVED FOR
MANUFACTURING**

Company: _____ Name: _____
 Signature: _____ Date: _____

HC Combination Chase Style Reference

Item: _____

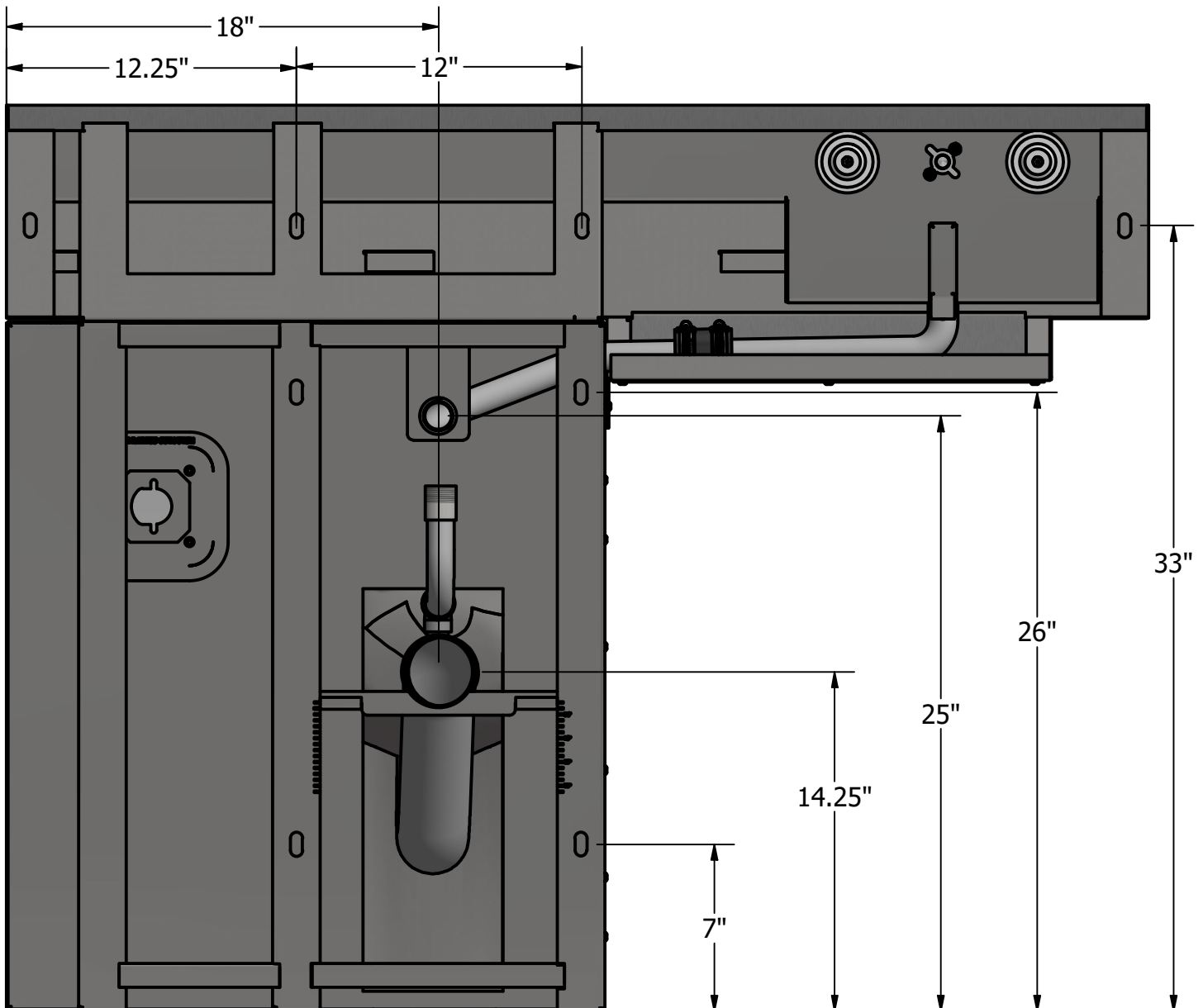
Right hand fixture is shown.

**FIXTURE SIDE VIEW - Knee Clearance**CBC HC Dimensions
Shown

Pre-Installation Information - Wall Outlet

- Upon receiving the fixture check to make sure no damage has occurred during shipment.
- Thoroughly flush all inlet connections before connecting the flush valve or pneumatic valve. Frequently small contaminants from the construction process enter these lines which could cause issues in the fixture plumbing.

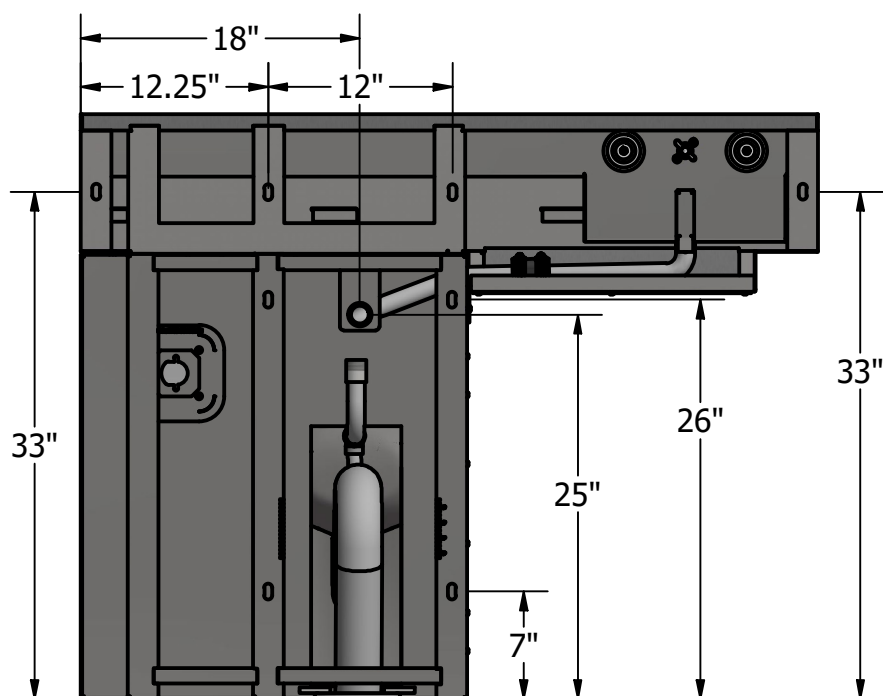
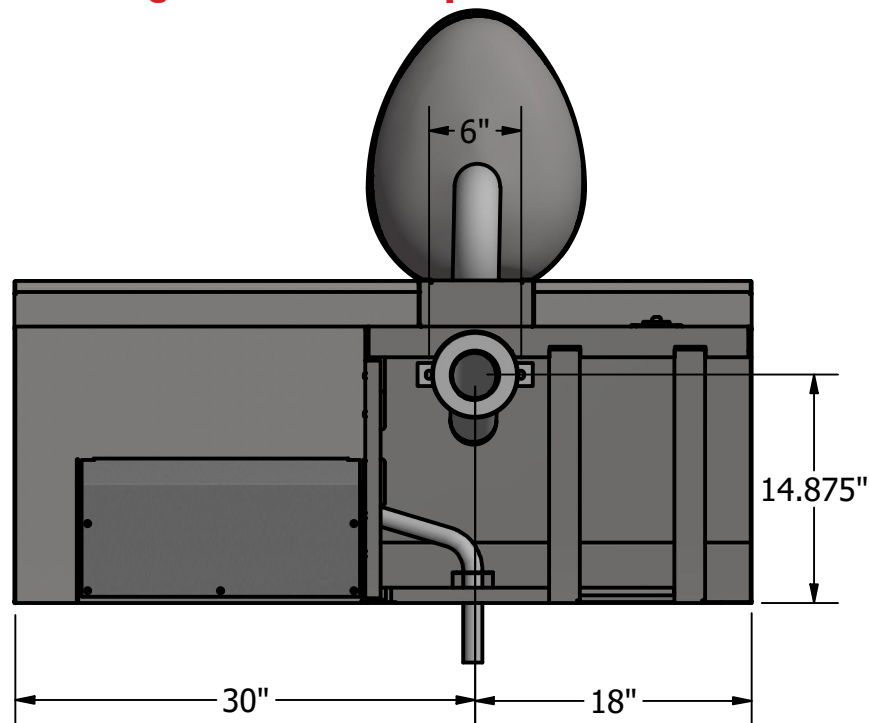
Check Rough-In locations prior to installation!



Pre-Installation Information - Floor Outlet

- Upon receiving the fixture check to make sure no damage has occurred during shipment.
- Thoroughly flush all inlet connections before connecting the flush valve or pneumatic valve. Frequently small contaminants from the construction process enter these lines which could cause issues in the fixture plumbing.

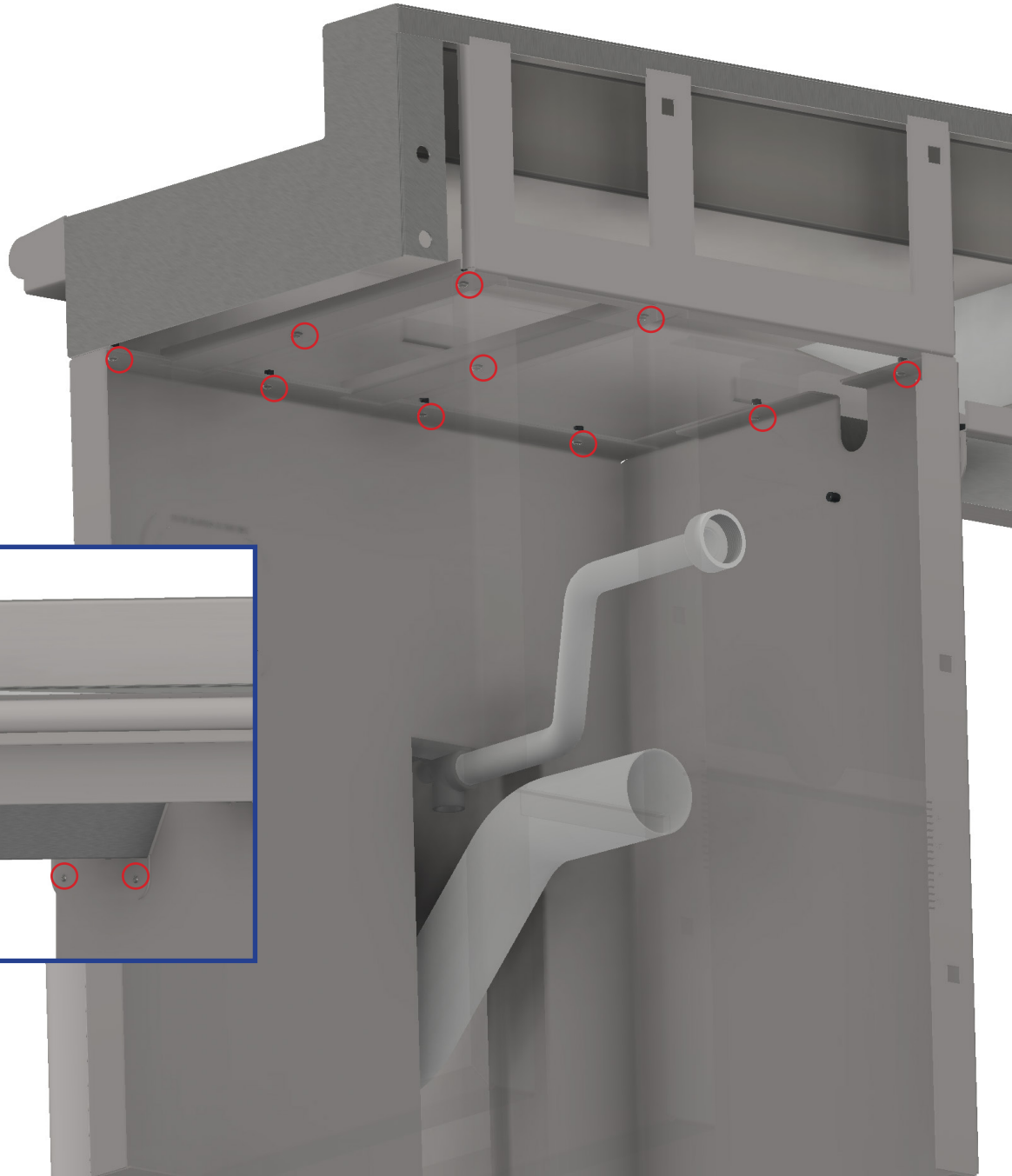
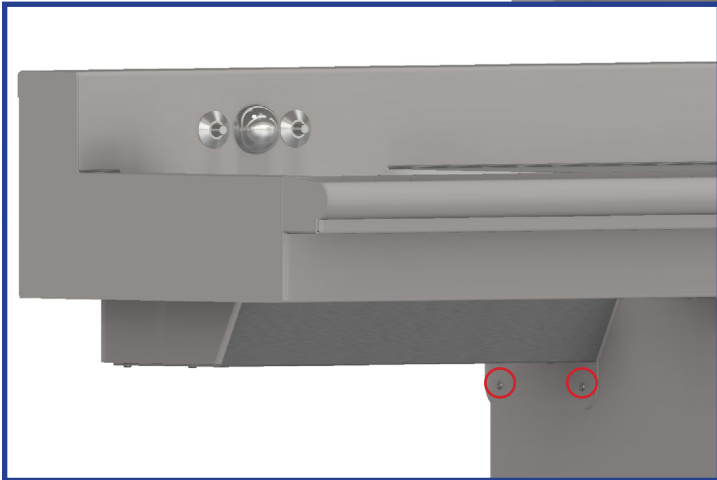
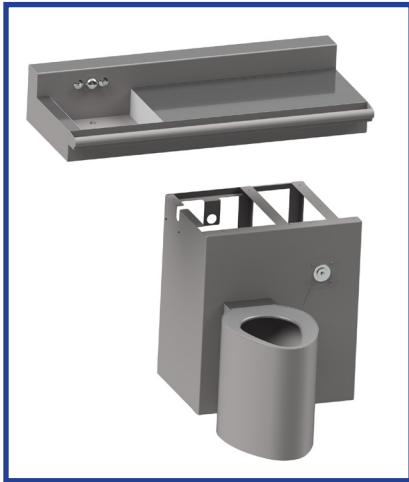
Check Rough-In locations prior to installation!



Installation Information

Locate rough-in position on wall. If a Metcraft security frame is to be incorporated, cast the frame in place or block in place by conventional construction methods.

1. You can detach the sink assembly from the toilet assembly if that will make installation easier for your use case. There will be a total of twelve screws to fasten the sink counter to the bottom assembly. Ten screws will fasten from the inside and are highlighted to the bottom right. There are two screws next to the lavatory access panel that fasten from the outside, these are highlighted to the bottom left.

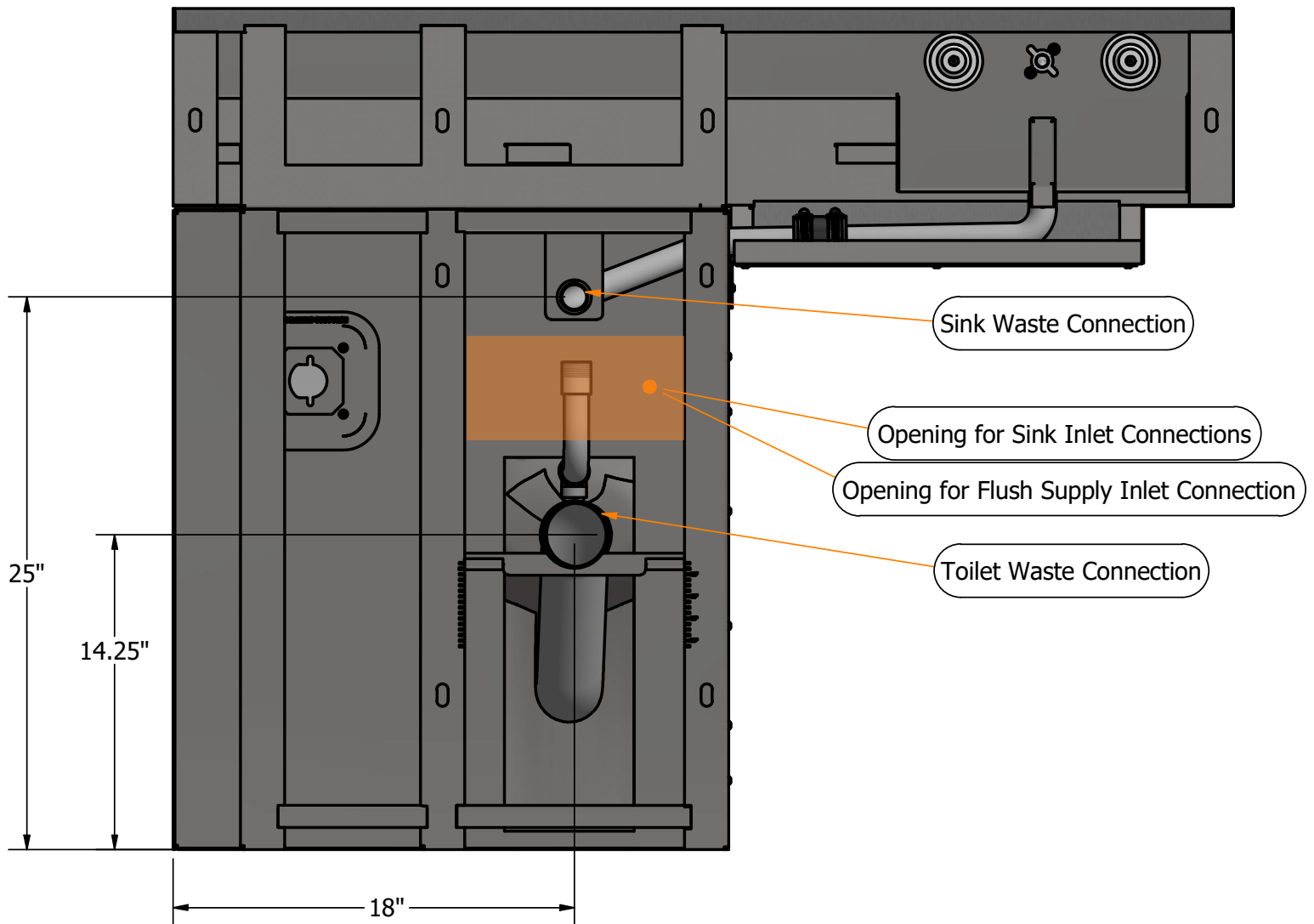


2. Rough-in all plumbing connections required by fixture.

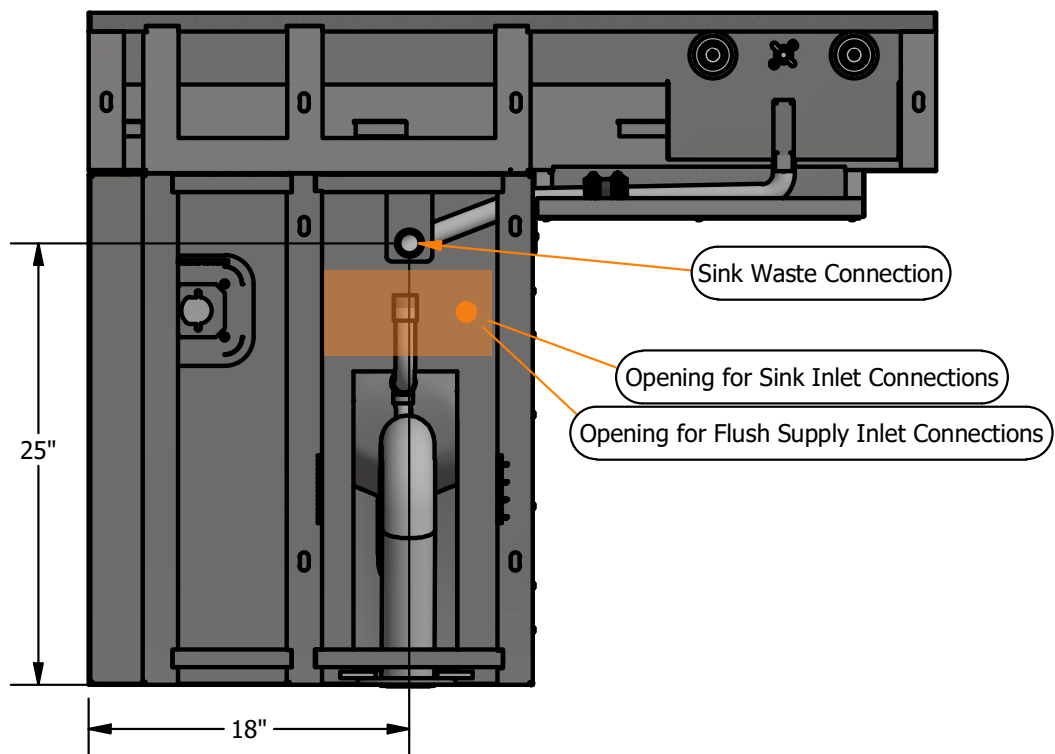
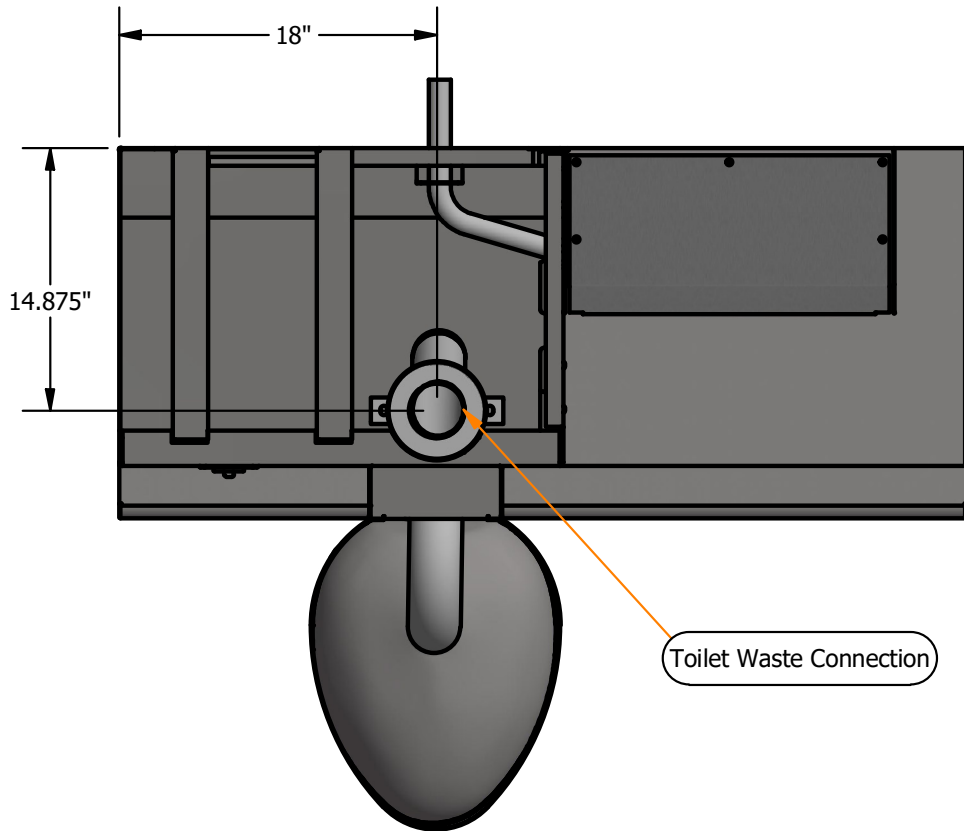
- Sink Inlet Connection(s)
- Sink Waste Connection
- Flush Inlet Connection
- Toilet Waste Connection

3. Attach backsplash trim, all through wall plumbing connections and seal.

Plumbing Connections - Wall Outlet



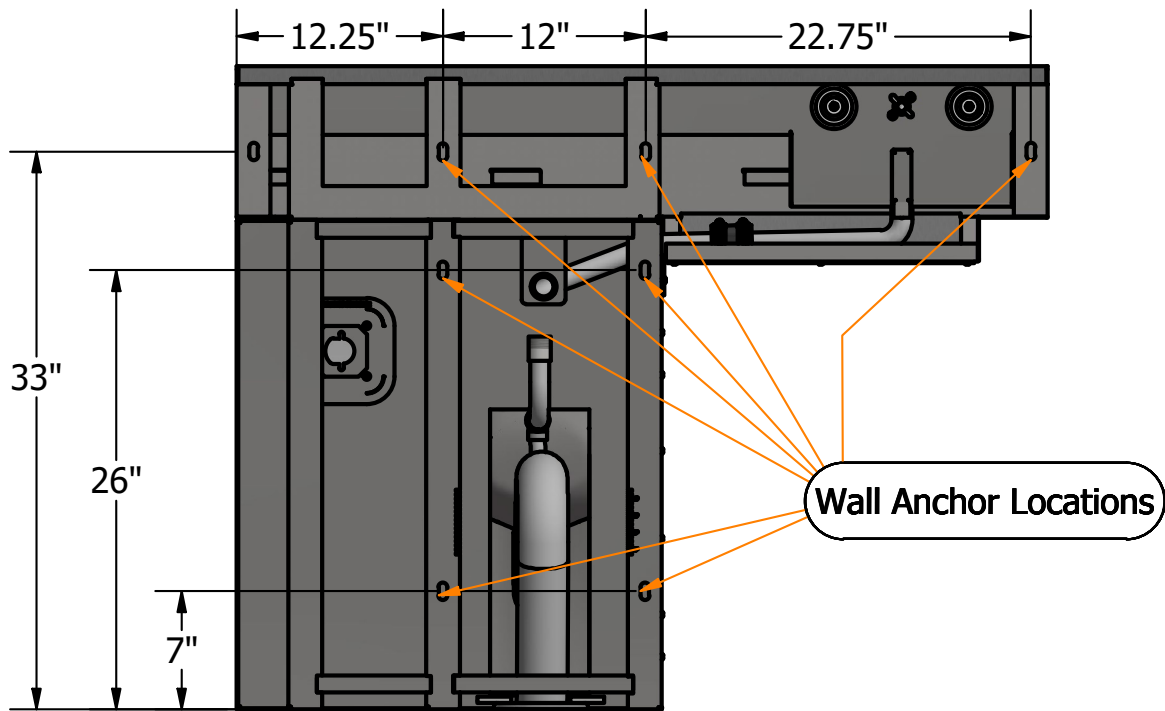
Plumbing Connections - Floor Outlet



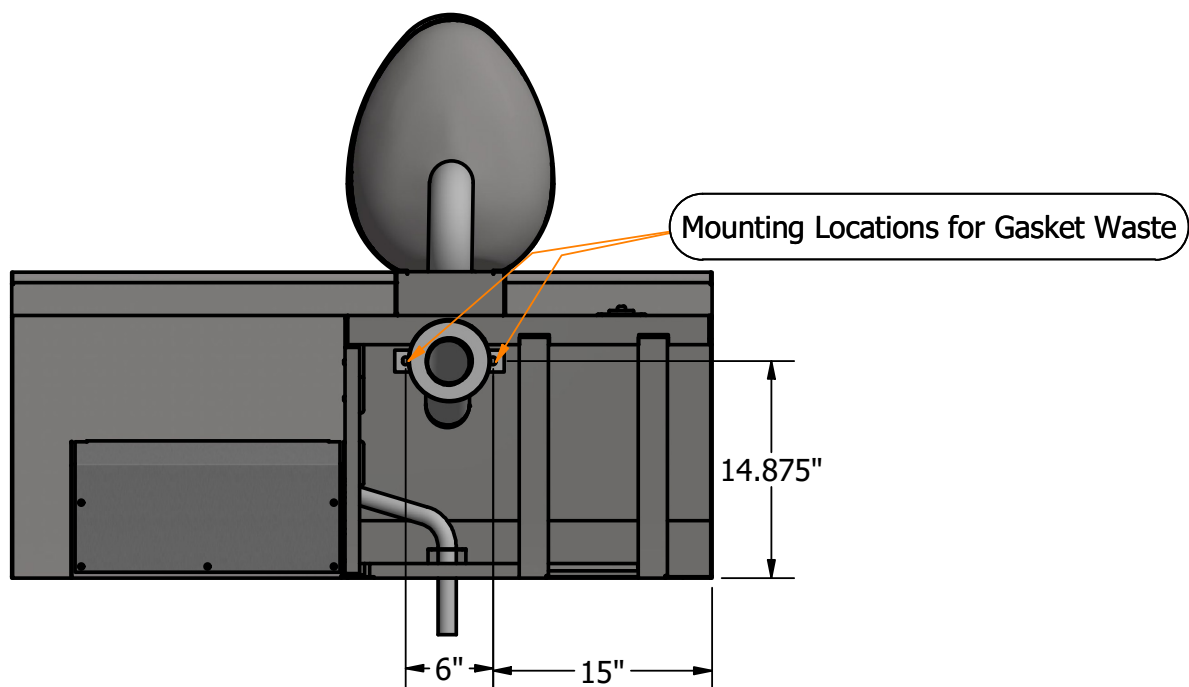
4. Unit is now ready for final positioning, and mounting.

- Seven locations for 1/2" wall fasteners.
- Additional mounting for gasket flanges with a spacing of 6" center to center.

Anchor Locations

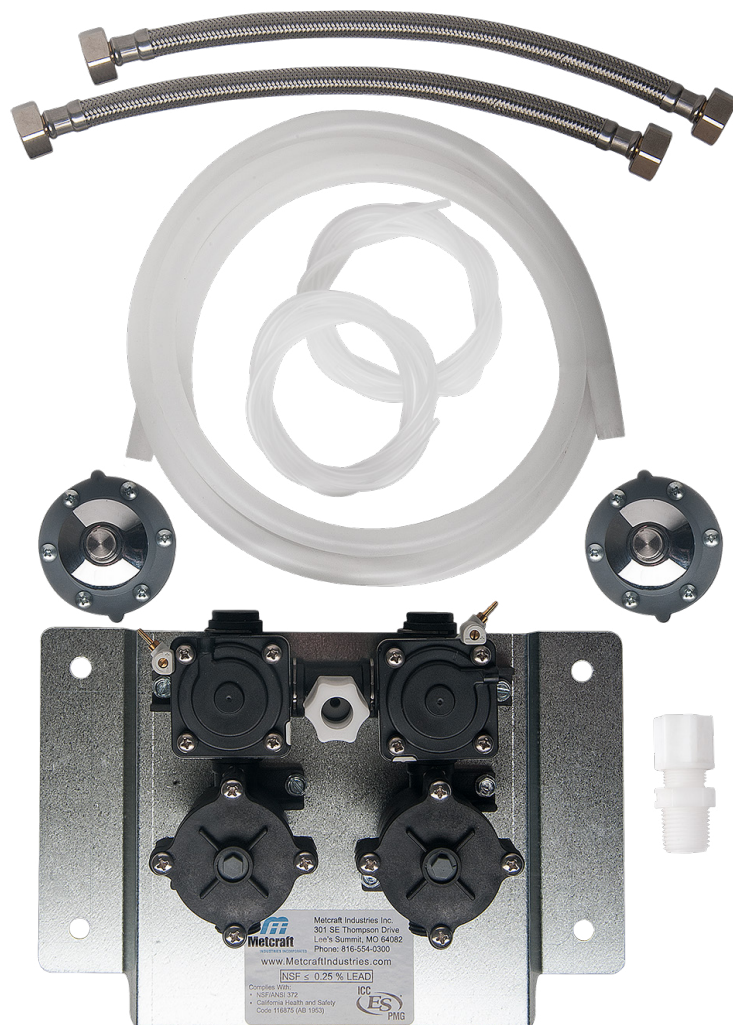


Floor Outlet Gasket Waste Anchor Locations



A300 Pneumatic Valve Installation Instructions

1. Flush all supply lines thoroughly before hooking valves to supply lines.
2. Make sure polyethylene tubing is clear of any debris or water. DO NOT use kinked tubing.
3. Install inlet fitting to the bubbler/shower head. Assemble push buttons and bubbler/shower head to the fixture's backsplash/panel before securing to the wall.
4. Mount the valve and bracket assembly to the wall. Choose a location where future access for maintenance and adjustment of the valve will be convenient. The valve must be located within 7 feet of the push button operators and bubbler outlet.
5. DO NOT use pipe thread compounds or sealants on any threads connecting to the valves, valve operators and tubing nuts. Thread sealants are not intended for these connections and may contribute to valve damage or malfunctions and thereby void warranty.
6. Connect 1/2" polyethylene tubing to the bubbler/shower head and the valve outlet. Loop tubing below spout to prevent water draining from spout. Compression connections should be tightened 1/4 to 1/2 turn past hand tight. Over-tightening with a wrench may cause damage. **Make sure tubing is fully inserted into socket before tightening.**



7. Connect 1/8" tubing to push button assemblies and to brass barb connection on the side of the valve operator. **Make sure tubing is fully inserted in socket on push button assemblies before tightening small plastic nut. Small nut should be finger tightened only. Do not use a wrench on these nuts.**
8. Open supply stop(s) and check the valve connections for leaks.
9. Actuate push buttons several times to clear air from the valves and tubing. Check water tubing at valve and bubbler for possible leaks again.
10. Adjust timed cycle of valves as needed, following the instructions given below.

The timing cycle can be adjusted using the timing adjustment located next to the 1/8" air tube connection on the side of the valve operator. These valves have a small screwdriver slot on the end of the adjuster. Timing clockwise lengthens the cycle; counter-clockwise shortens the cycle. Adjustments should be made in small increments to achieve best results. As the cycle is lengthened, adjustments become increasingly sensitive. Timed cycles in excess of 1 minute require infinitely small adjustments.

Contamination of Stainless Steel Fixtures

- **Construction Contaminations**
 - Weld Splatter, Metal Shavings, Cleaning Acids & Concrete Dust.
- **Chemical Contaminations**
 - Chlorine, Muriatic Acid, Sulphuric Acid, Hydrochloric Acid, Iodine.
- **Environmental Contaminations**
 - Sea Salt & Humidity is very caustic to stainless steel and requires more frequent care and cleaning to prevent these fixtures from rusting.
 - Standing Water & Organic Matter
 - Never let standing water or organic matter accumulate in the toilet for over a month.
 - ***Never allow bleach to stand in the toilet bowl. This is a typical practice we see to disinfect the toilet bowl during long periods where the toilet is inactive. This practice causes the bleach to attack the toilet bowl and destroy the fixture.***

- Routine cleaning, to remove residue from your stainless steel fixtures, should be performed every month.
 - Clean with ordinary soap and water.
 - Apply with a cloth or sponge.
 - Rinse thoroughly and wipe dry.
 - Apply a thin film of stainless steel cleaner and wipe dry.
- For tougher stains, residues and deposits.
 - Use a Scotch-Brite™ scouring pad along with a stainless steel cleaner to remove tough stains, residues, and deposits. ***Never use common steel wool or wire brush as they will cause surface stains and rusting.***
 - Rinse thoroughly and wipe dry.
 - Apply a thin film of stainless steel cleaner and wipe dry.
- After installation, clean, dry & cover fixture to protect from soiling by work from other trades. ***If contamination of the stainless steel surface occurs, then clean immediately as described above.***

- Clean with ordinary soap and water.
 - Apply with a cloth or sponge.
 - Rinse thoroughly and wipe dry.
 - Apply a thin film of stainless steel cleaner and wipe dry.
- For tougher stains, residues and deposits.
 - Use a Scotch-Brite™ scouring pad along with a stainless steel cleaner to remove tough stains, residues, and deposits.
 - Rinse thoroughly and wipe dry.
 - Apply a thin film of stainless steel cleaner and wipe dry.
- ***Never allow bleach to stand in the toilet bowl. This is a typical practice we see to disinfect the toilet bowl during long periods where the toilet is inactive. This practice causes the bleach to attack the toilet bowl and destroy the fixture.***