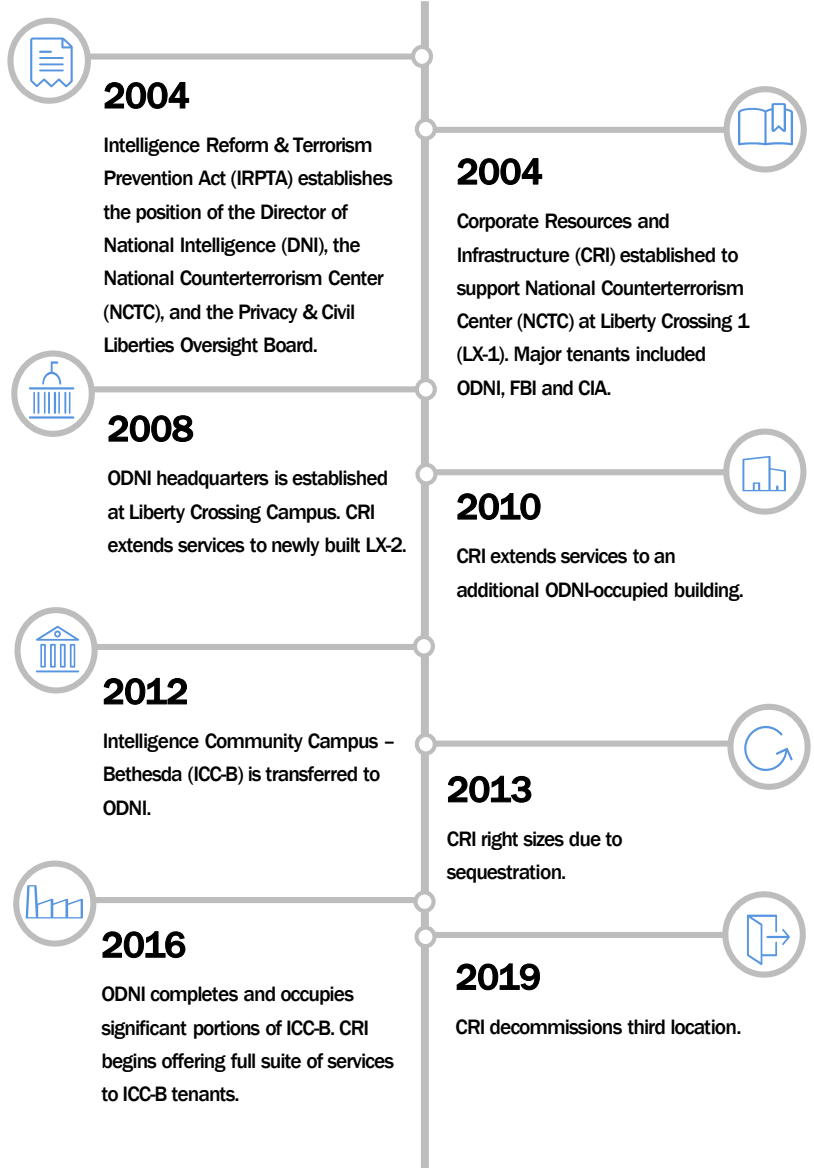


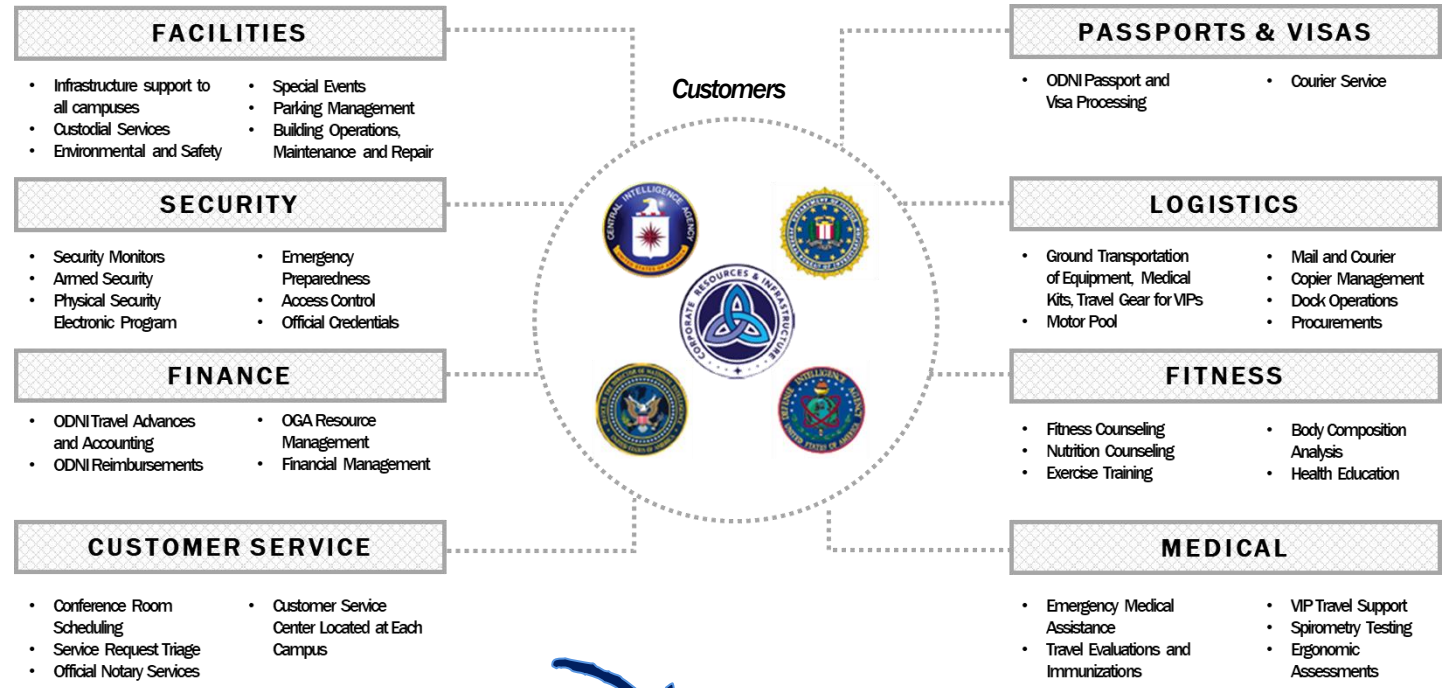
Corporate Resources and Infrastructure (CRI)

The premier provider of integrated support solutions in the federal government

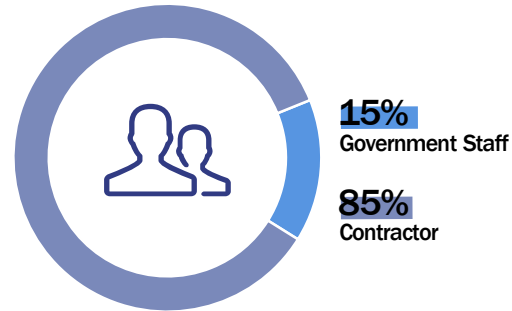
How we got here



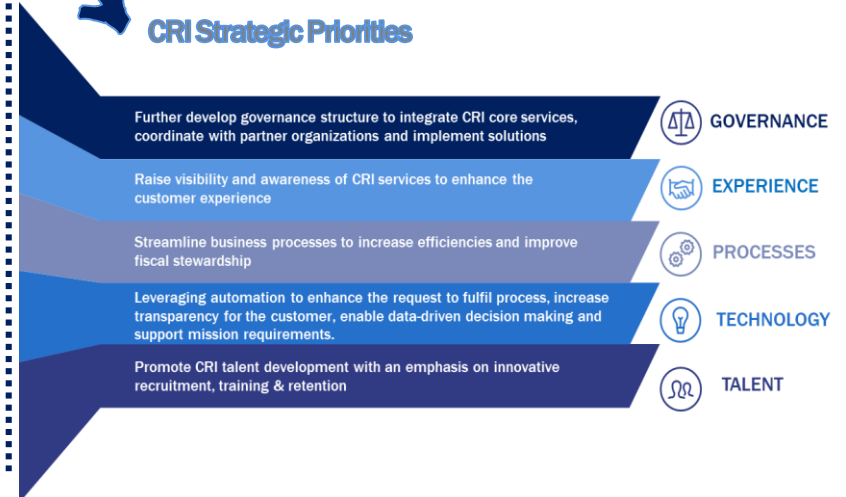
Services



Staffing



CRI Strategic Priorities



Corporate Resources and Infrastructure (CRI)

 Enhancing CRI's responsiveness and decision-making capabilities via data-driven, agile technical solutions to support mission requirements

CRI TECHNOLOGY INNOVATIONS



Intelligent Transit Operations System (iTops): Shuttle Management System

- CRI implemented the iTops shuttle management system for its various shuttle runs in support of IC customers.
- The iTops system enables CRI to track shuttle locations and expected arrival and departure times.
- iTops improves overall safety, provides accurate passenger counts and other automated metrics and enhances the customer experience.



Excalibur: Service Request System

- CRI developed a customer-facing service request system within ServiceNow that captures the majority of CRI's services and increases visibility into the request-to-fulfill process for both the service provider and the customer.
- Excalibur enhances the customer experience and provides the metrics to better understand operational performance.



Archibus: Facilities Management Tool

- CRI developed an enterprise facilities management tool using out-of-the-box Archibus software and several existing applications.
- The tool will ensure that all building systems, infrastructure and equipment are tracked for maintenance and replacement and will provide insight regarding space utilization.
- Archibus has integration capabilities with other enterprise systems, (i.e. Excalibur and Builder) and increases transparency regarding space and cost information.



Improving Operations through Performance Measurement

- CRI is enhancing its performance management program to better track and evaluate service quality, improve data integrity, and inform data-driven business decisions.
- CRI's new technology innovations - iTops, Excalibur and Archibus - provide real time insights into analytical data that support CRI operations.
- The data from these systems will connect with visualization software (i.e. Tableau) to provide an interactive dashboard with real-time insight into the operational health of CRI service areas.